



# Assistive Technology to Support Independent Living


Empowering Independent Lives Through Innovation

Presented by: Rob Kennedy


Date: 17<sup>th</sup> June 2026

## Our Mission & Vision

Our mission and vision are underpinned by our belief that everyone deserves to feel safe, supported and respected.



Provide compassionate personalised services, that assist individuals to live their best lives possible (with dignity and ease of mind).



A world where every individual – regardless of age or ability – can live safely with confidence, independence, and dignity, supported by Technology that truly cares.

Kyndi delivers person-led, technology-enabled independent living by grounding every decision in its core values of integrity, empathy, accessibility, and innovation.

- They start by listening to each person's goals and preferences, ensuring support is shaped around what matters most to them. Their commitment to integrity means offering honest guidance and reliable technology that genuinely enhances safety and independence.
- Through empathy, they build relationships based on understanding and dignity, making sure technology feels supportive rather than intrusive.
- Their focus on accessibility ensures solutions are easy to use, inclusive, and adaptable, removing barriers so people can confidently manage daily life.
- Finally, Kyndi's drive for innovation keeps them at the forefront of assistive technology, using creative, forward-thinking tools that empower individuals to live more independently while staying connected to the people and support they trust.

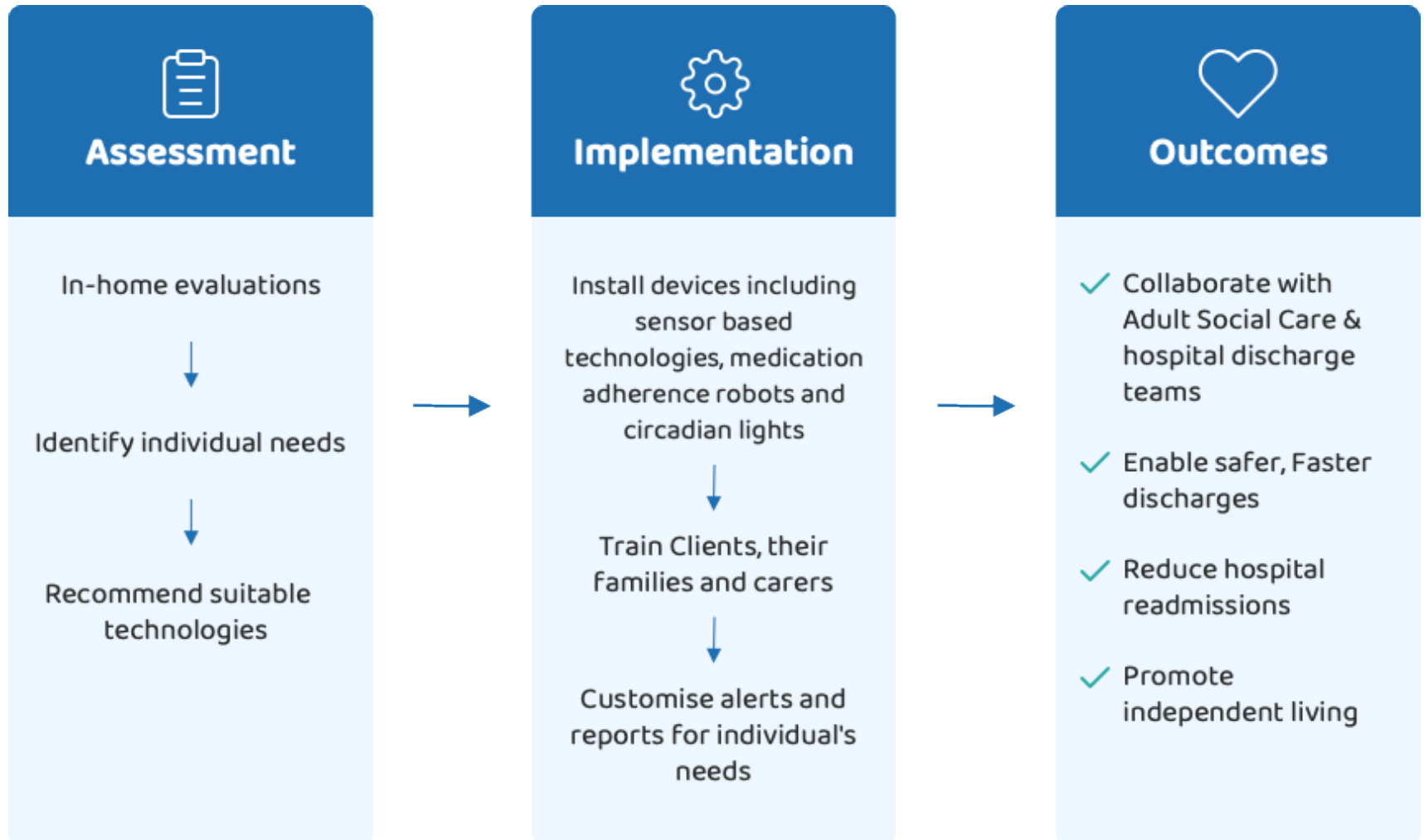


## Reactive Telecare – Why Was a Review Needed?

- Outdated model focused on responding after an incident, not preventing harm.
- Often introduced too late, limiting preventive impact.
- Low utilisation and poor fit with everyday life for many older adults.
- Digital switchover made analogue systems unreliable and obsolete.
- NHS prevention agenda requires proactive, data-enabled support instead.
- Newer technologies offer early detection, safety, and independence not possible with reactive alarms.

# Assistive Technology & Prevention

- **Supports NHS Prevention Agenda:** Assistive technologies (AT) help people stay independent, reduce avoidable hospital admissions, and enable earlier intervention.
- **Early Identification & Monitoring:** Remote monitoring, fall detection, smart home sensors, and digital health tools allow clinicians to spot deterioration sooner.
- **Empowering Self-Management:** AT such as medication reminders, health apps, mobility aids, and communication tools enable people to manage long-term conditions more effectively.
- **Reducing Pressures on Services:** By improving safety, reducing crises, and supporting community-based care, AT aligns with the NHS aim to shift care closer to home.
- **Supports Integration (ICS/ICB Priorities):** AT can enhance collaboration across health, social care, and housing by creating shared data insights and enabling personalised care plans.
  
- **Outcome Benefits**
- Improved independence and quality of life
- Fewer unplanned hospital admissions
- Lower long-term care costs
- More efficient use of workforce capacity



## HOW CARE TECHNOLOGISTS ENABLE SAFER, INDEPENDENT LIVES THROUGH PERSON-CENTERED SUPPORT

### **Person-Centred Assessments**

Care Technologists conduct tailored assessments focusing on individual goals, routines, and preferences to ensure meaningful technology use.

### **Building Trust and Accessibility**

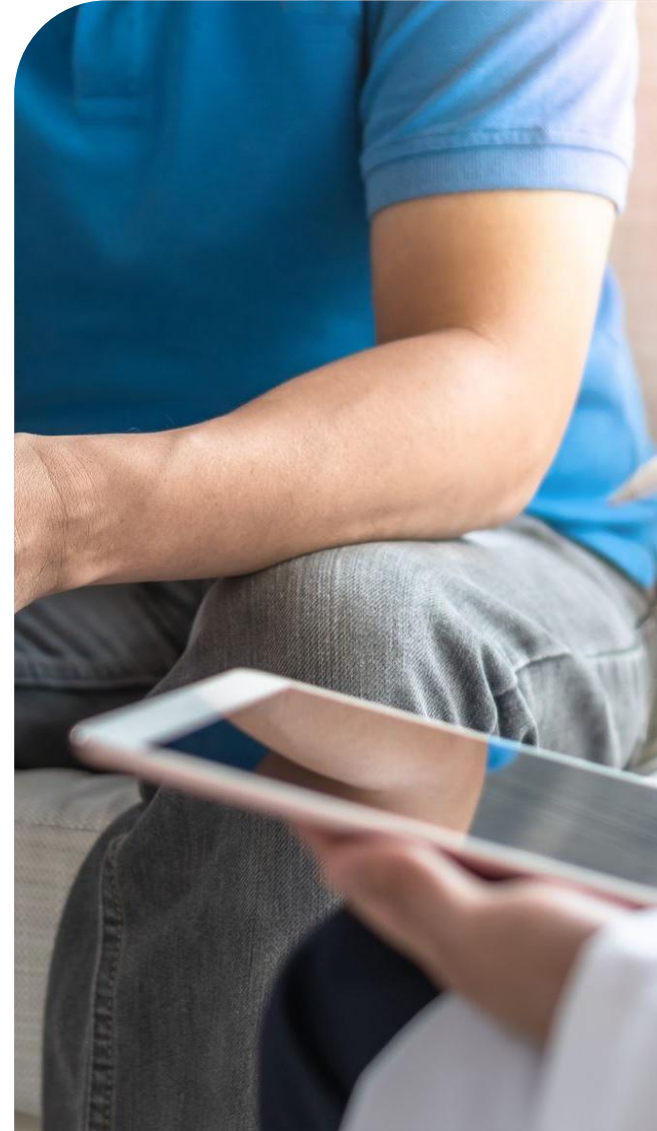
They liaise with clients and families, explaining technology benefits and addressing digital exclusion to build trust and confidence.

### **Coordinated Holistic Support**

Care Technologists collaborate with care teams and signpost to services, integrating technology within broader care plans.

### **Data-Driven Safety Monitoring**

They analyse behaviour data and alerts to identify risks early and support timely interventions for safety and wellbeing.





# We Measure Impact

## Individual Quality of Life

- Independence
- Safety and confidence
- Wellbeing

## Carers

- Reduce stress
- Support for paid carers

## Social impact

- Reduced isolation
- Community engagement

## Financial Savings

- Reduced care costs
- Avoided hospital admissions

# Success Metrics

- Individual outcomes: independence, reduced crises, improved wellbeing
- Unpaid carers: reduced stress, greater reassurance, better balance
- Paid carers: increased efficiency, safer working, fewer unnecessary visits
- Social impact: reduced isolation, stronger community engagement
- Operational: fast response, end-to-end quality, interoperable systems
- Financial: fewer admissions, reduced care costs, clear cost avoidance

# Why Kyndi Are Different



A LATCo enabling agile decision making



Full control of process from assessment to ongoing reviews



Own 24/7 ARC, handling reactive and preventative alerts



Interoperable with multiple devices and systems



Holistic data from all sources to report back to relevant people



Locked medicine container  
Storage for 2 - 4 weeks of  
medications.

Timing for medication is read via  
imprinted data on the sachets.  
Automatic reminders also for non-  
pill medicines:


Kyndi Operate a Wrap Around  
Managed service for Medway starting  
with Assessment, Client Consent,  
Transfer of Pharmacy, Installation,  
Monitoring, Re-Fills and Data/Savings  
Evaluation

Users have successfully ranged from  
people with living with Parkinsons &  
Dementia to Young Adults with  
learning difficulties. All now enjoying  
greater independence where they  
choose to live.

# Circadacare

---

To improve quality of life and healthspan

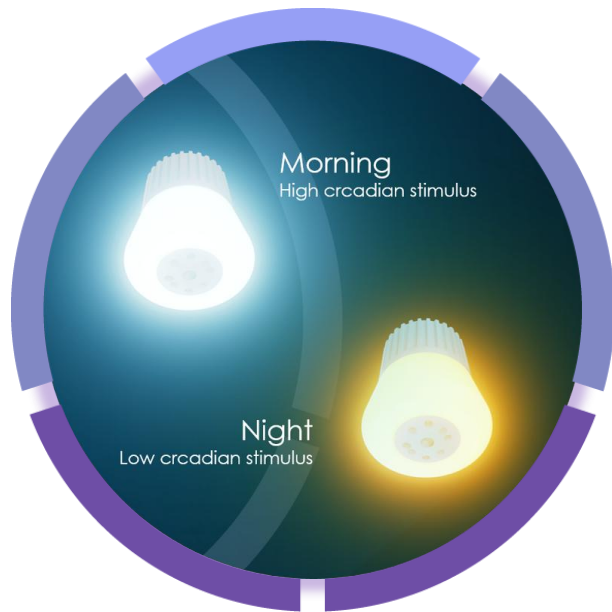
- 
- Sunlight governs cycles of life across the planet
  - It drives our body clock (circadian rhythm)
  - Stimulates serotonin and cortisol, and suppresses melatonin



Living with poor quality light may result in:

- Disturbed sleep patterns & night wandering
- Confusion and distress (sundowning)
- Increased risk of falls

# Proactive circadian lighting



Published academic research shows circadian lighting:

- Reduces daytime napping by 56%<sup>1</sup>
- Reduces night wandering by 55%<sup>1</sup>
- Reduces falls by 43%<sup>2</sup>

We've now demonstrated similar results in published case studies, reducing falls and alleviating sundowning within 7-14 days.<sup>3</sup>

1. Biodynamic lighting effects on the sleep pattern of people with dementia. Ellen van Lieshout-van Dal et al

2. A two-year study conducted by investigators at Brigham and Women's Hospital and the Midwest Lighting Institute (MLI), showed a significant 43% reduction in the rate of falls in residents.

3. Kyndi Case Studies 2025

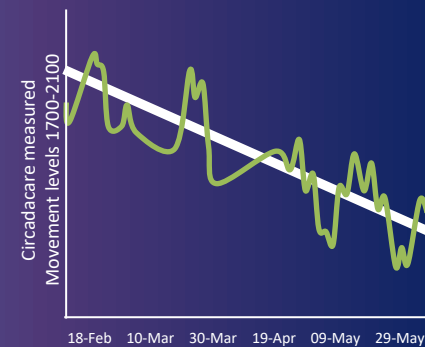


## Case Study: Light in Adult Social Care

Ian, with Dementia, showed evening agitation that led to carer breakdown.

Circadacare significantly reduced his disruptive behaviours, returning confidence to his wife as a caregiver.

Consequently, Ian did not have to move into fulltime care.



### £35k pa saving for one service user

*'We are actively looking to deploy Technology Enabled Care solutions which enable people to live in their own homes for longer, whilst saving money.'*

*Using Circadacare is helping us to achieve these **cost savings**, which is improving the **quality-of-care provision** in the Medway area.'*

**Robert Kennedy, Head of Operations, Kyndi.**



# How Andi Delivers This

## Continuous Assessment

:

Active Real-Time Monitoring

## Proactive & Preventative Insight:

Early visibility of deterioration before escalation

## Integrated Reactive Safety:

Reliable emergency response alongside preventative insight

Device  
Agnostic  
Interoperability



Detection of  
Change in  
Behaviour,  
Health or  
Wellbeing



Flags Potential  
Falls, UTI's and  
mobility risks

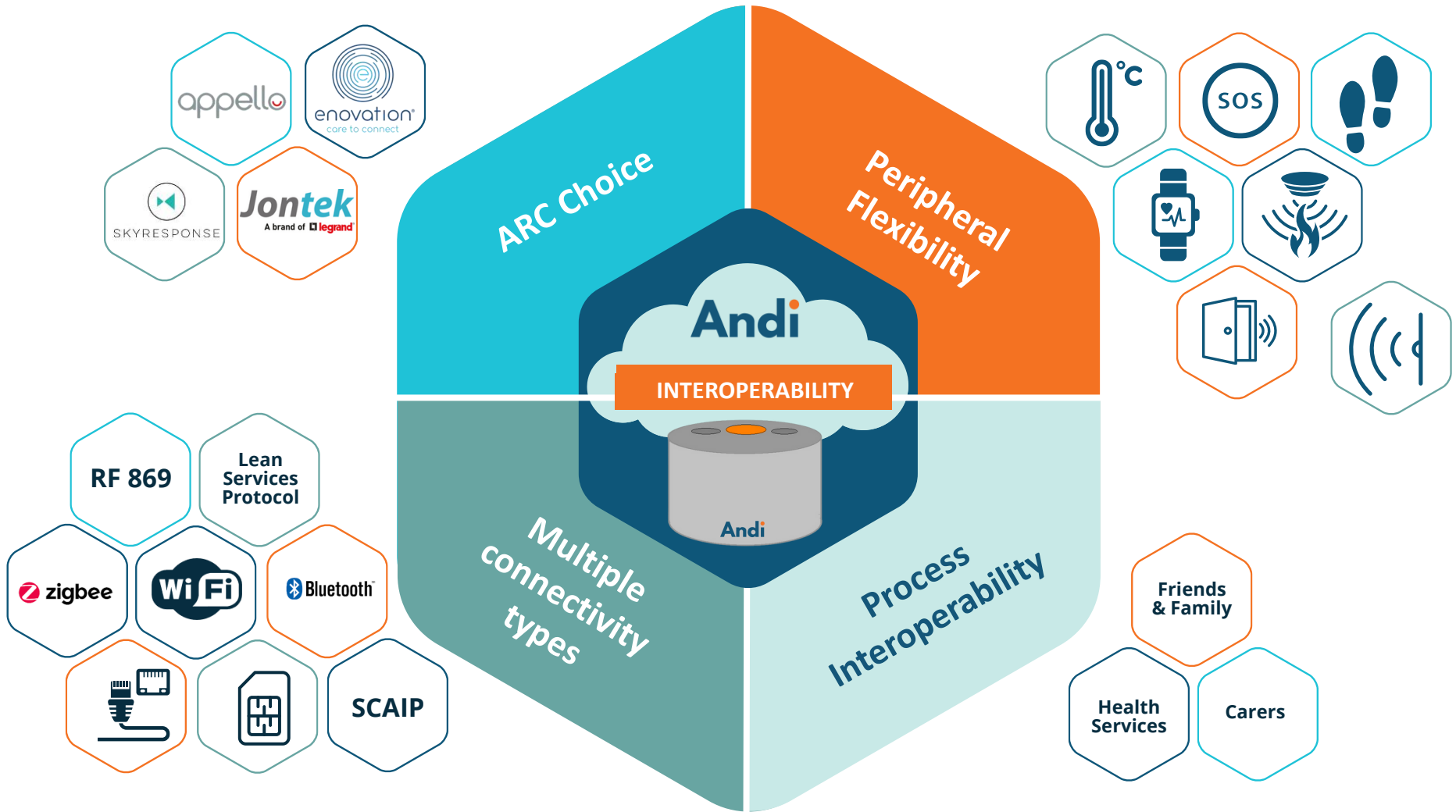


Real-Time  
notifications to  
Family, Friends  
and Care  
Teams



Better data  
leading to  
right-sizing of  
Care Packages







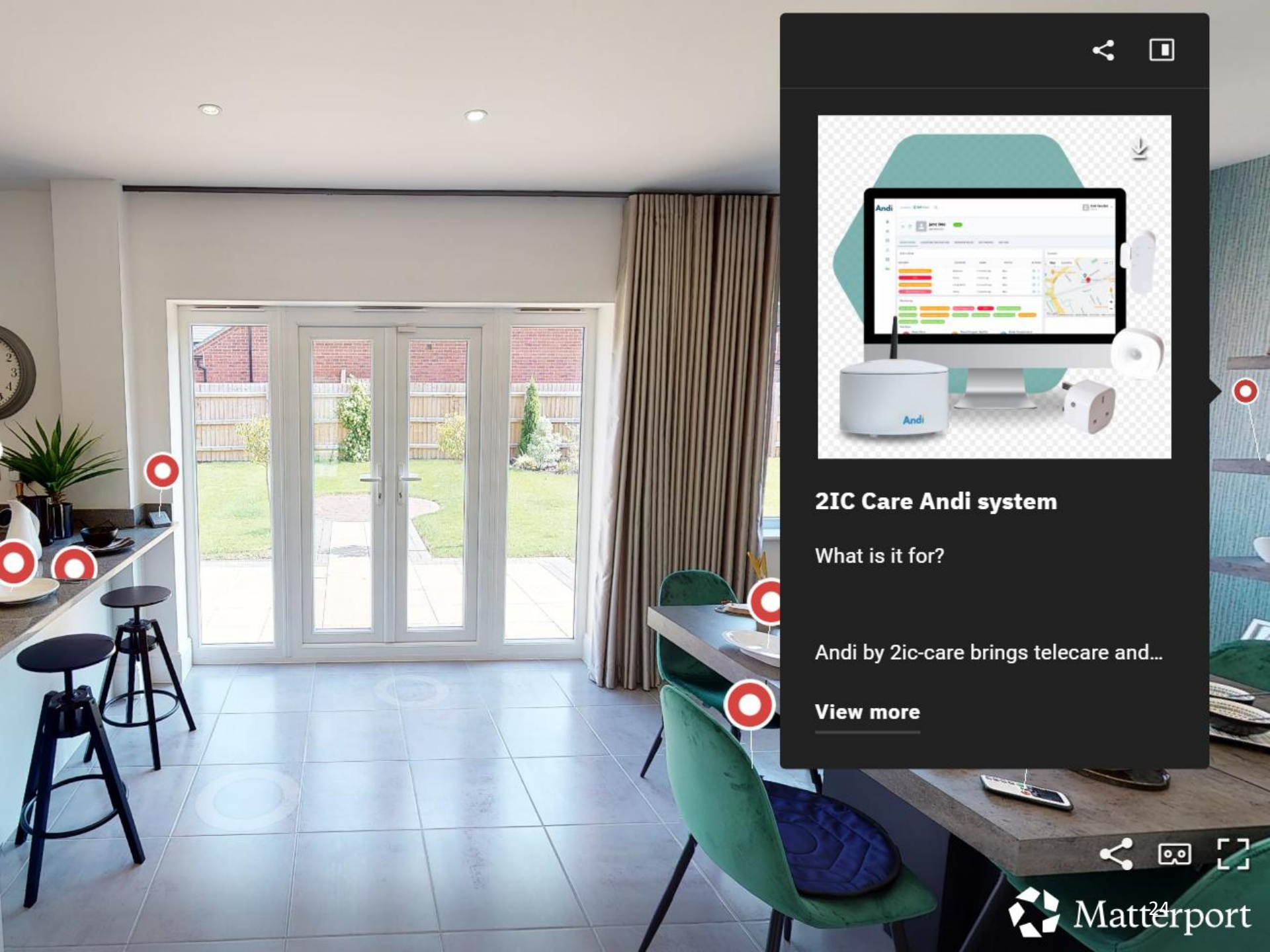
Milbotix SmartSocks create accurate, AI-enabled wearable devices embedded in everyday items of clothing for use in research, social care and healthcare.

User-friendly, comfortable, familiar and non-stigmatising sock wearable. The socks contain e-textile and silicon sensors measuring pulse, temperature, sweat, and motion.

Presented by biT Group

📍 Kyndi & Medway Virtual House



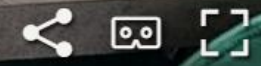


## 2iC Care Andi system

What is it for?


Andi by 2ic-care brings telecare and...

[View more](#)





Share icon | Full screen icon



Download icon

### Grab Rails by Front Door

Grab rails offer the user extra safety when making their way out of doors. They commonly have an ant...

[View more](#)

Share icon | Comment icon | Full screen icon

Matterport



Kyndi's team are redefining assistive technology and care



Technology + compassion = empowered lives.



Technology is not and should not replace people.