

# Women's Health Data: Service Access and Uptake in Medway

Katie Town

Senior Public Health Intelligence Analyst  
**Medway Public Health Intelligence Team**

# Medway Context

## Population Estimates (2022)

282,702  
Population

138,474  
Males

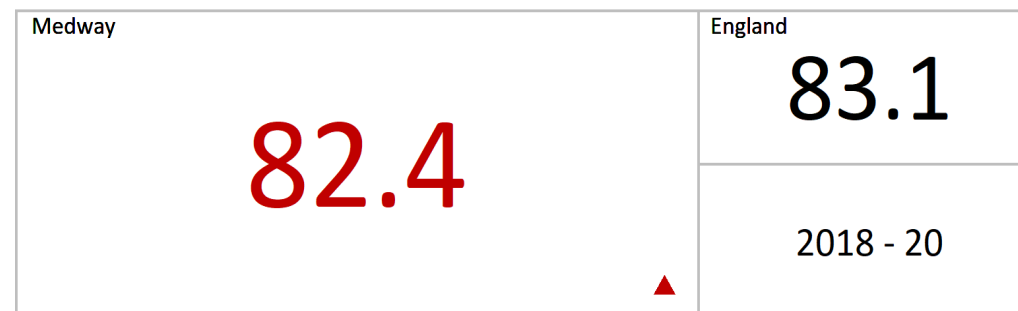
144,228  
Females

Source: Medway JSNA Dashboard; ONS Population Estimates 2022

## Life Expectancy

### Life Expectancy at Birth:

Female

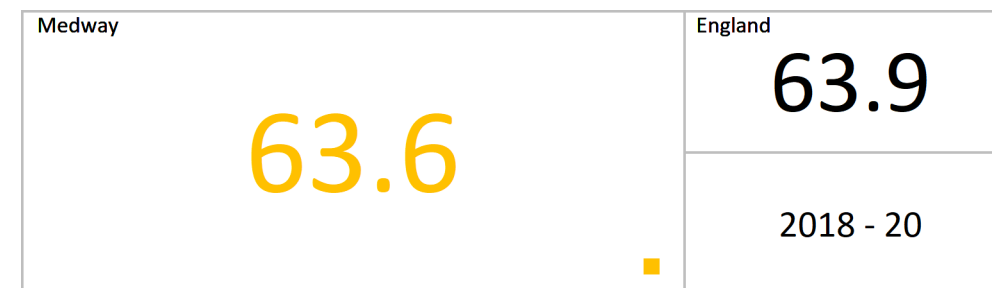


Compared to England

- Better
- Similar
- ▲ Worse
- ◇ Not compared

### Healthy Life Expectancy at Birth:

Female



Source: Office for National Statistics (ONS); Fingertips IDs 90362, 90366.

Produced by: Medway Public Health Intelligence Team – [Inequalities Profile](#)

# Women's Health: Key Topic Areas

The Life Course Approach

**Vaccination and  
Screening**

**Contraception**

**Fertility, pregnancy and  
pregnancy loss**

**Menopause**

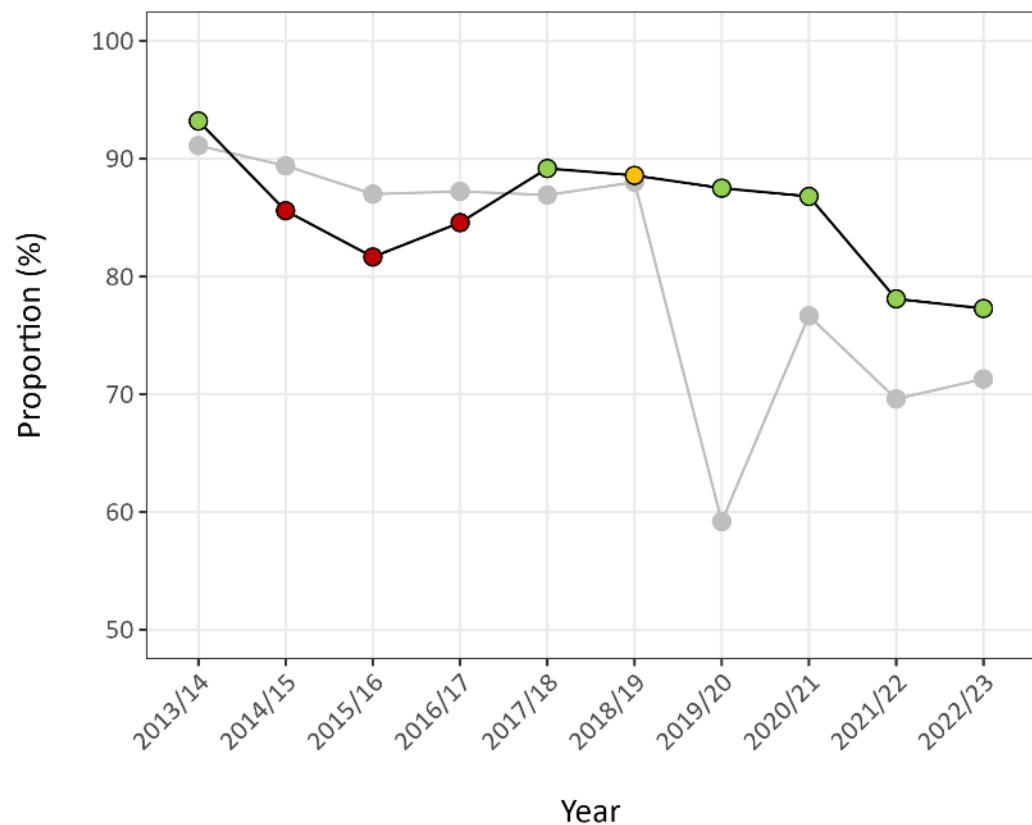
**Mental and  
Physical Health**

# Human Papillomavirus (HPV) Vaccination

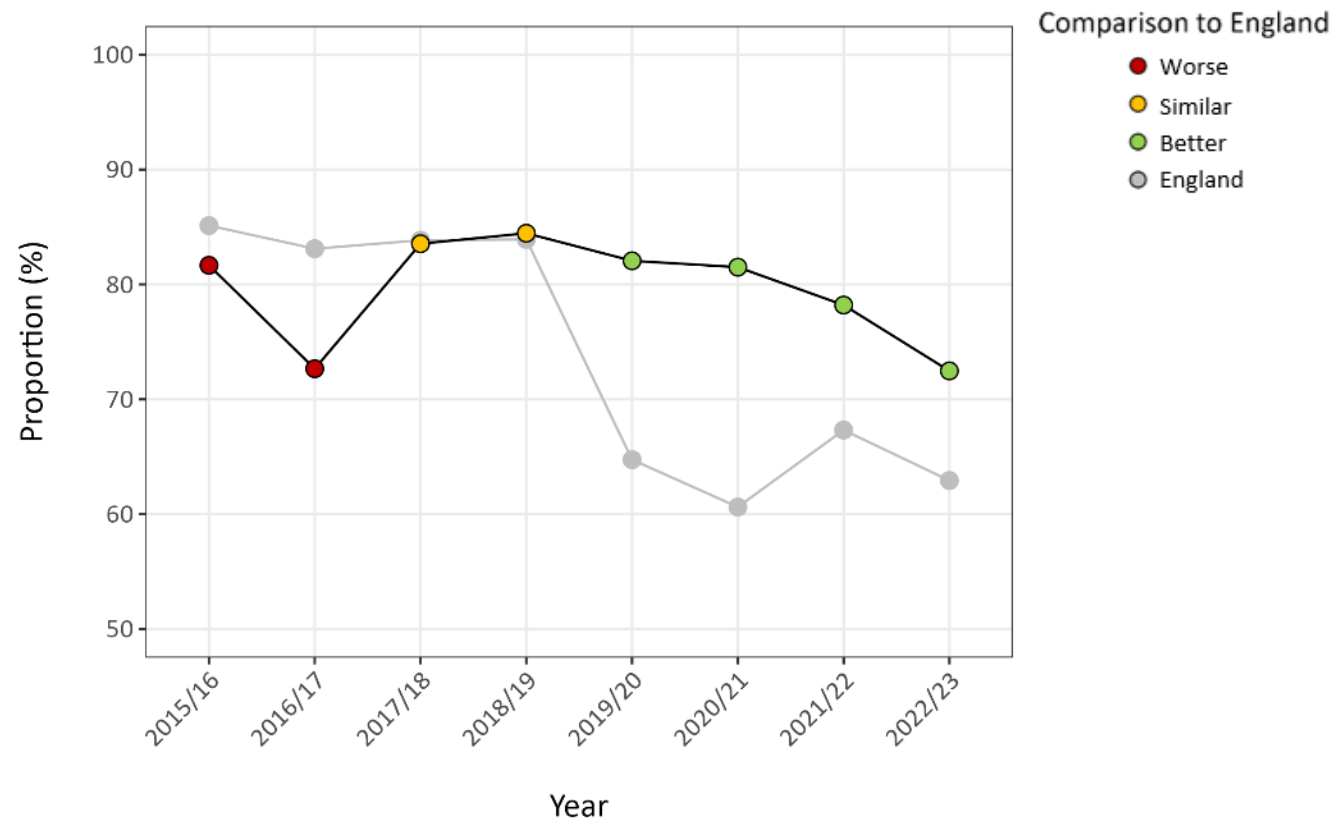
The HPV vaccination protects against cervical cancer. It is free under NHS and administered by school nurses and GPs.

The trend is **decreasing and getting worse**.

Medway HPV Vaccination Coverage: One Dose (12 to 13 years) Females



Medway HPV Vaccination Coverage: Two doses (13 to 14 years) Females

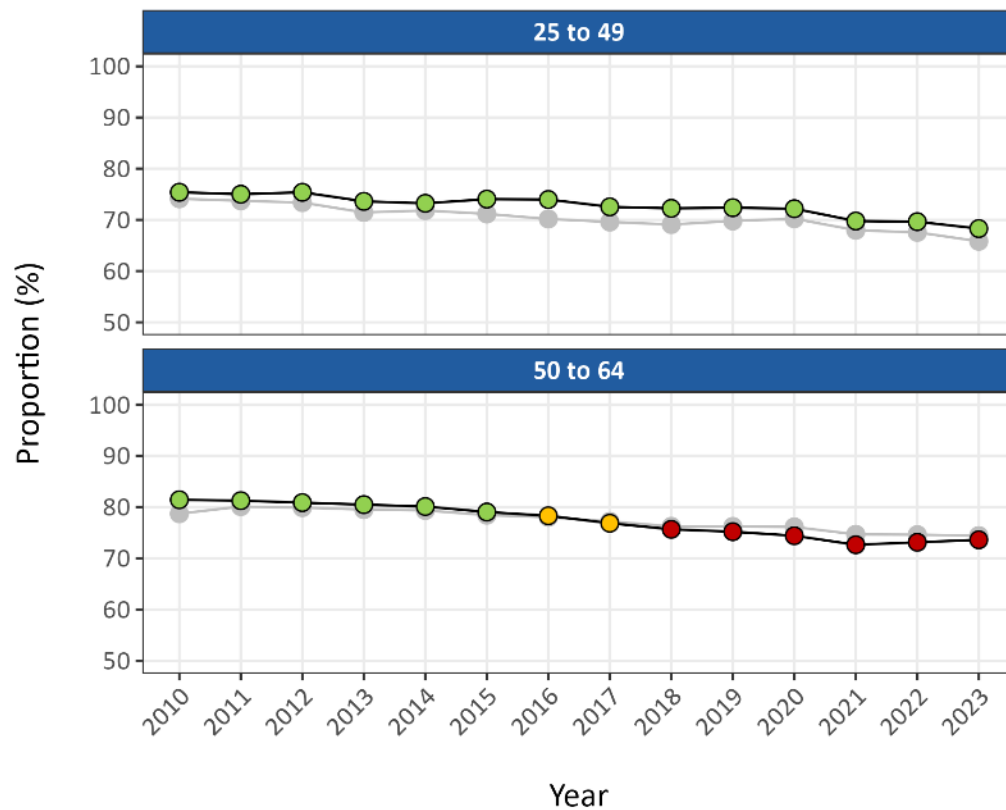


## Cervical Screening Coverage

Checks the health of the cervix for those aged 15 to 64.

Cervical cancer is highest in 30- to 34-year-olds (Cancer Research UK).

Medway: Cervical Cancer Screening Coverage



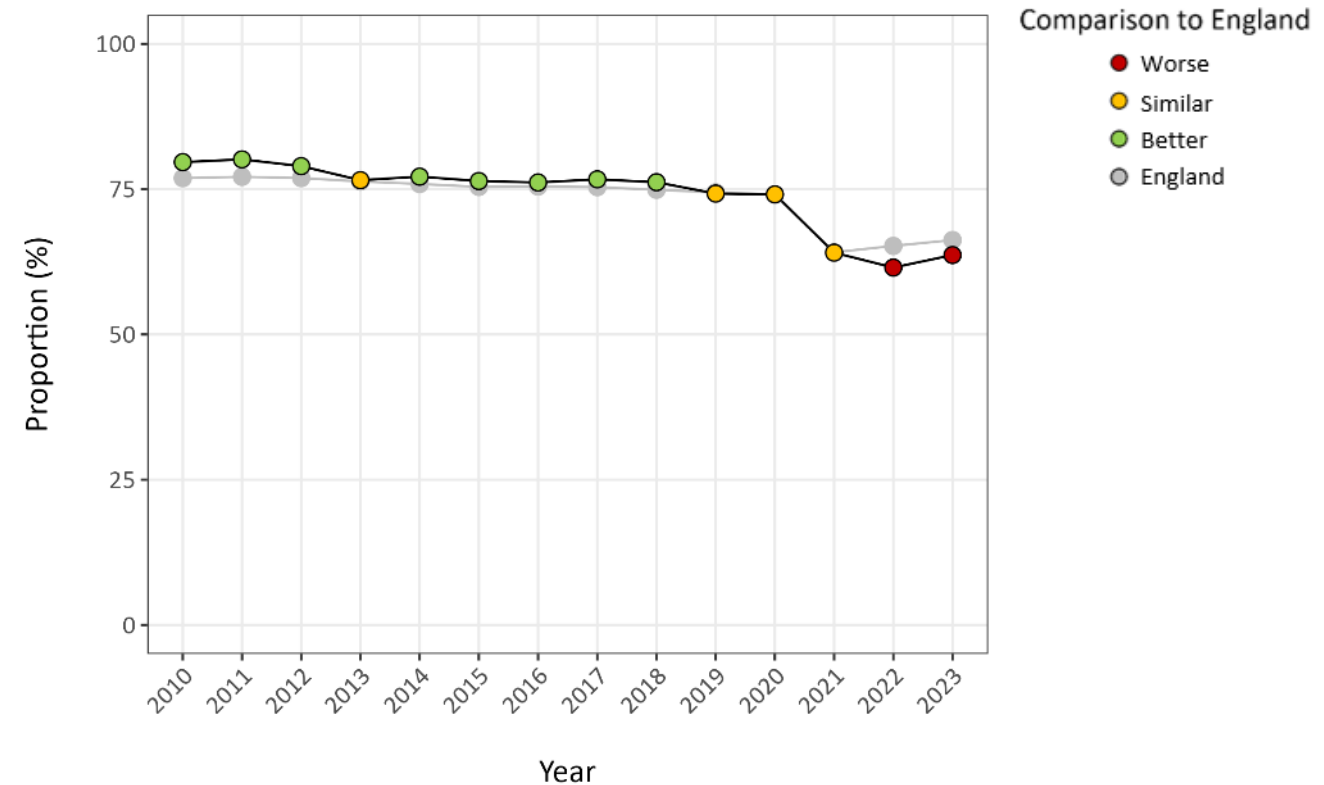
Source: NHS England, Cervical Screening Programme; Fingertips IDs 93560, 93561  
 Produced by: Medway Public Health Intelligence Team (KT)

## Breast Cancer Screening Coverage

Helps identify early-stage cancer for those aged 50 to 70.

Breast cancer is highest in 60- to 69-year-olds (Cancer Research UK).

Medway: Breast Cancer Screening Coverage



Source: NHS England, Breast Cancer Screening Programme; Fingertips ID 91340  
 Produced by: Medway Public Health Intelligence Team (KT)

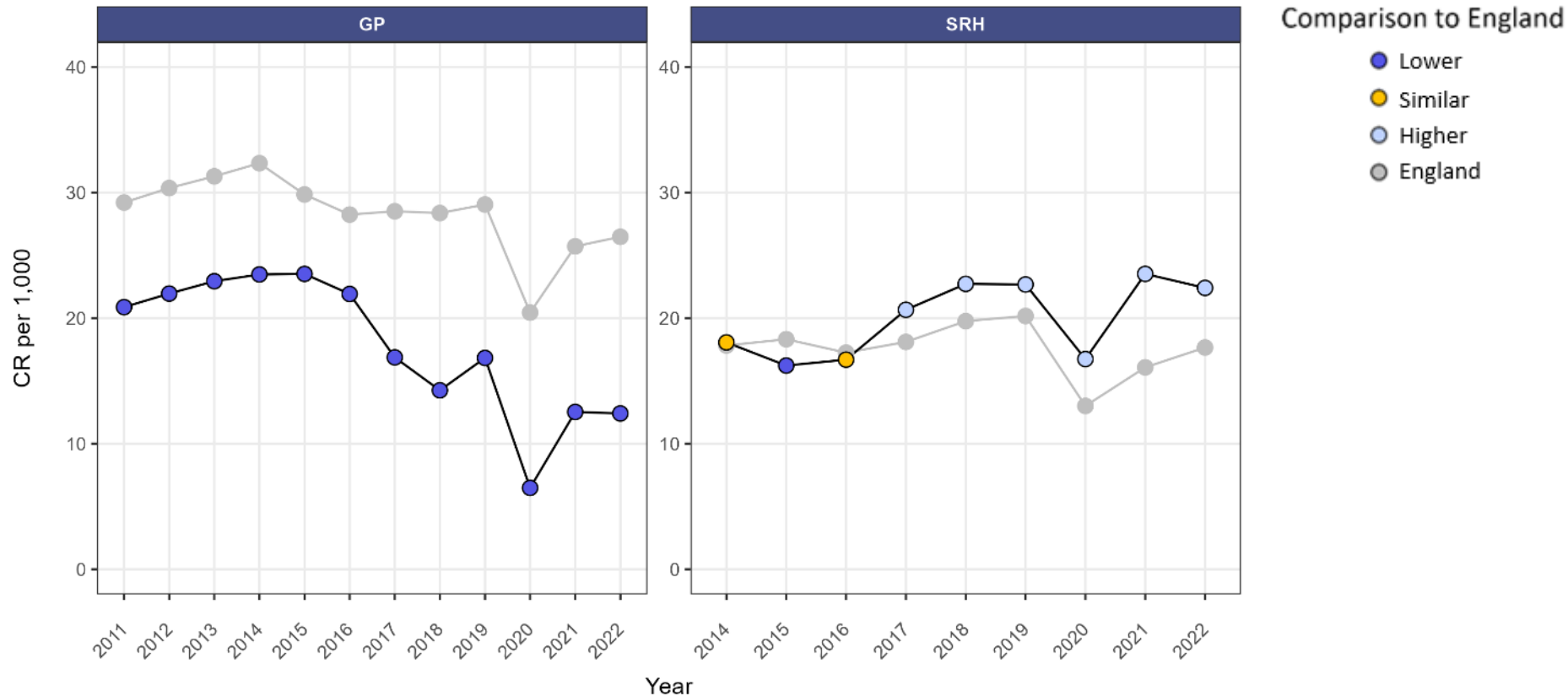
# Long-Acting Reversible Contraception (LARC)

LARC is birth control that helps prevent pregnancy after just **one** treatment e.g. contraceptive implant and coil.

LARC is offered by GPs and Sexual and Reproductive Health Services (SRH). The SRH service in Medway is **Clover Street**.

## Medway Prescribed LARC Rate (excluding injection) by Year and Service Type

Crude Rate (CR) per 1,000 population



Source: OHID based on NHS Business Services Authority ePACT2 prescribing data and ONS mid-year population estimates. Fingertips ID's 91819, 92255  
 Produced by: Medway Public Health Intelligence Team (KT)

## Maternity Services Overview (2023)

Medway NHS Foundation Trust (MFT)

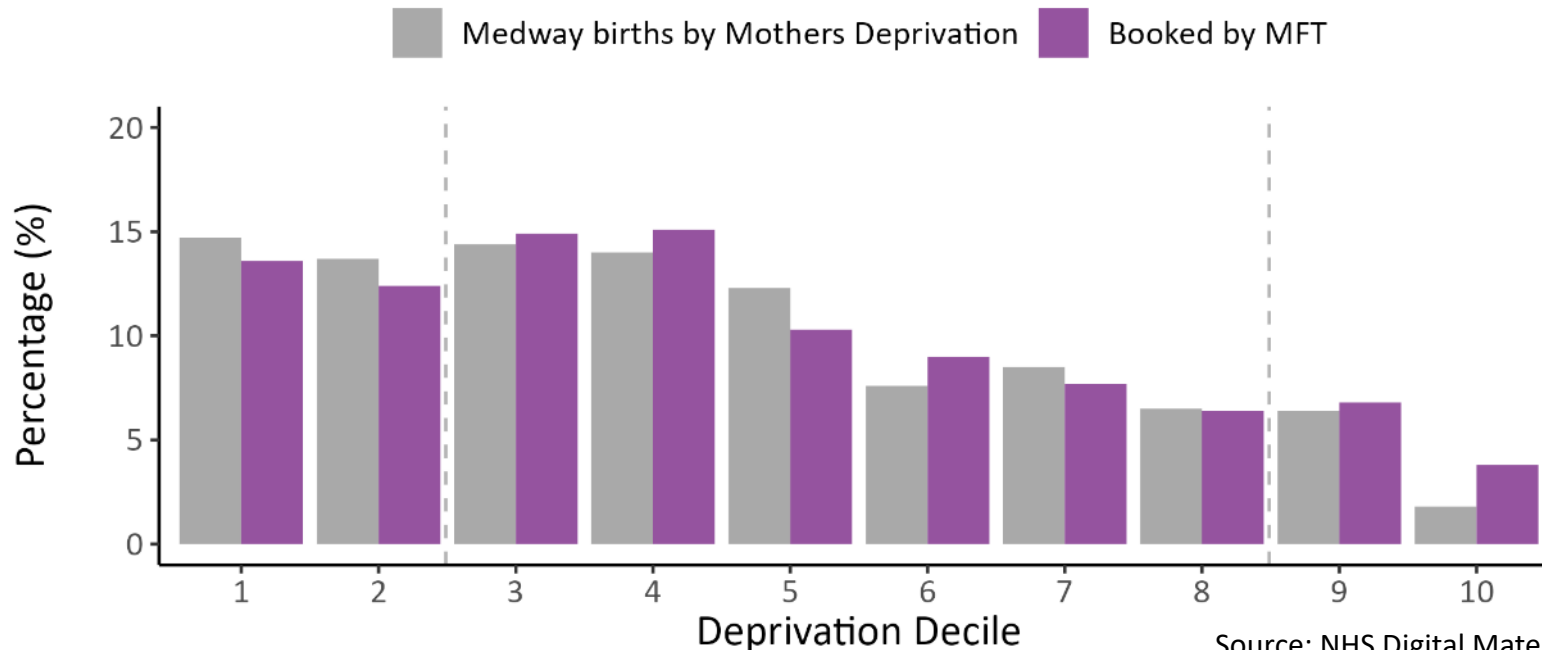
There were a total of **5,230** bookings for Maternity Services in 2023 at Medway NHS Foundation Trust.

Source: NHS Digital Maternity Services Data Set (MSDS) – Monthly Statistics (Jan – Dec 2023)

### Deprivation

#### Women Booked by MFT Maternity Services by Deprivation Decile

Data compared to births in Medway by Mothers Deprivation Decile.



Women living in the **most deprived areas** are **60% less likely** to have received **any antenatal care**.

(National Maternity Survey, 2015)

Source: NHS Digital Maternity Services Data Set (MSDS); NOMIS Births Dataset  
Produced by: Medway Public Health Intelligence Team (KT)

## Fertility Services

The 2022 fertility rate in Medway is 55.8 per 1,000 population - higher than England.

- There is currently a lack of published and publicly available data for on fertility services including IVF, especially for same-sex couples.
- This is a priority set out in the National Women's Health Strategy.

## Pregnancy Loss and Birth Trauma Services

The 2020-22 infant mortality rate in Medway is 36 per 1,000 live births – similar to England.

**THRIVE** offer support for Medway residents experiencing mental health difficulties after birth trauma and/or loss  
→ **449** referrals over the last 2 years with **60 (13.9%)** from Medway and Swale.





## Hormone Replacement Therapy (HRT)

The **menopause** is a natural part of ageing and is the time in every woman's life when her periods stop. This is usually between the ages of **40 to 60** years old.

Hormone replacement therapy (HRT) helps to relieve severe symptoms of menopause. The **cost to access HRT was reduced in April 2023**.

### HRT Prescriptions: Kent and Medway Integrated Care Board (ICB)

| Financial year            | Number of patients | Total items prescribed |
|---------------------------|--------------------|------------------------|
| 2015/2016                 | 34,129             | 102,370                |
| 2016/2017                 | 38,657             | 118,698                |
| 2017/2018                 | 43,043             | 140,968                |
| 2018/2019                 | 46,527             | 160,371                |
| 2019/2020                 | 50,830             | 192,053                |
| 2020/2021                 | 47,477             | 199,184                |
| 2021/2022                 | 62,215             | 268,415                |
| 2022/2023                 | 79,757             | 384,986                |
| 2023/2024 (YTD June 2023) | 58,366             | 107,497                |

Source: [NHS Hormone Replacement Therapy Statistics Summary Tables](#)



# Mental Health – Medway Talking Therapies

One in five women (19%) experience a Common Mental Disorder (CMD) such as anxiety or depression.

Improving Access to Psychological Therapy (IAPT) services offer short-term psychological support for CMDs.

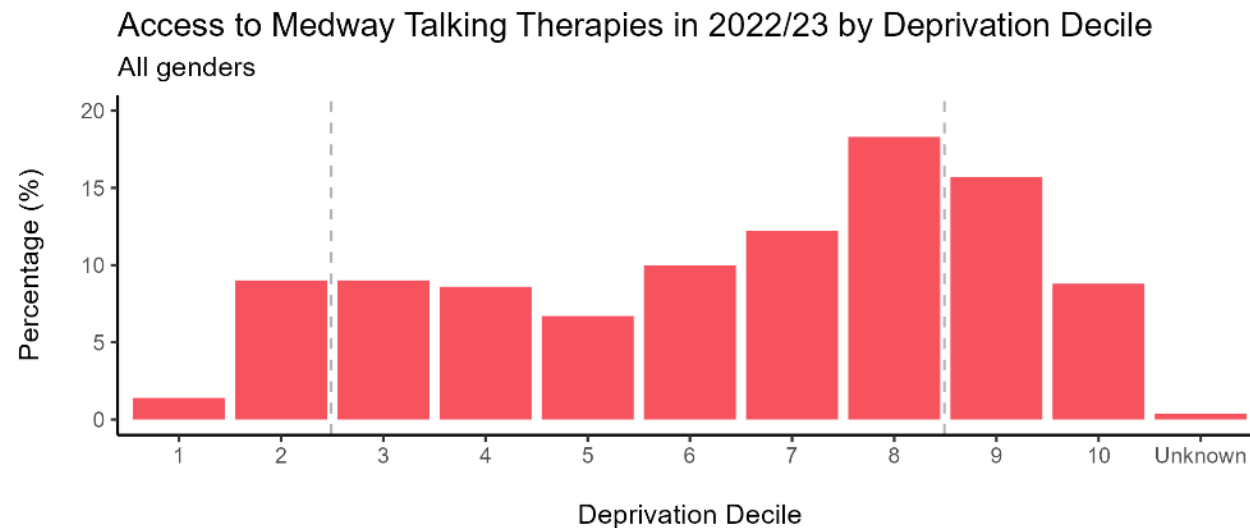
## Overview 2022/23

| Treatment Stage              | Total | % of Females  |
|------------------------------|-------|---------------|
| Referrals Received           | 7,670 | 5,015 (65.3%) |
| Accessing Services           | 5,515 | 3,680 (66.7%) |
| Finished course of treatment | 3,025 | 2,090 (69.1%) |

Source: NHS Talking Therapies Annual Dataset 2022/23. Self-reported gender.

## Deprivation

People living in more deprived areas have a higher risk of mental ill health but are less likely to access support (OHID).



Source: NHS Talking Therapies Annual Dataset 2022/23. Self-reported gender.  
Produced by: Medway Public Health Intelligence Team (KT)

## NHS Health Checks

NHS Health checks identify those at risk of conditions such as heart disease, diabetes, kidney disease and stroke. It is available for individuals aged 40 to 74 in GPs, some pharmacies and the Smokefree Advice Centre in Medway.

Cardiovascular disease (CVD) is the leading cause of death in women worldwide (World Heart Federation).

### Overview (2023/24)

There were a total of **2,942** delivered health checks by Medway Council and Pharmacies in **2023/24**

More health checks were delivered for **females (56.3%)** than males (43.7%).

(Medway Health Diagnostics Dashboard)

### Age Breakdown

| Age Group | Total % of female cohort |
|-----------|--------------------------|
| 39 to 44  | 13%                      |
| 45 to 49  | 10%                      |
| 50 to 54  | 13%                      |
| 55 to 59  | 17%                      |
| 60 to 64  | <b>18%</b>               |
| 65 to 69  | 10%                      |
| 70 to 75  | <b>7%</b>                |
| Other     | 11%                      |

Source: Medway Health Diagnostics Dashboard – 2023/24

# Contact Details

Katie Town

Senior Public Health Intelligence Analyst

Medway Public Health Intelligence Team

[katie.town@medway.gov.uk](mailto:katie.town@medway.gov.uk)