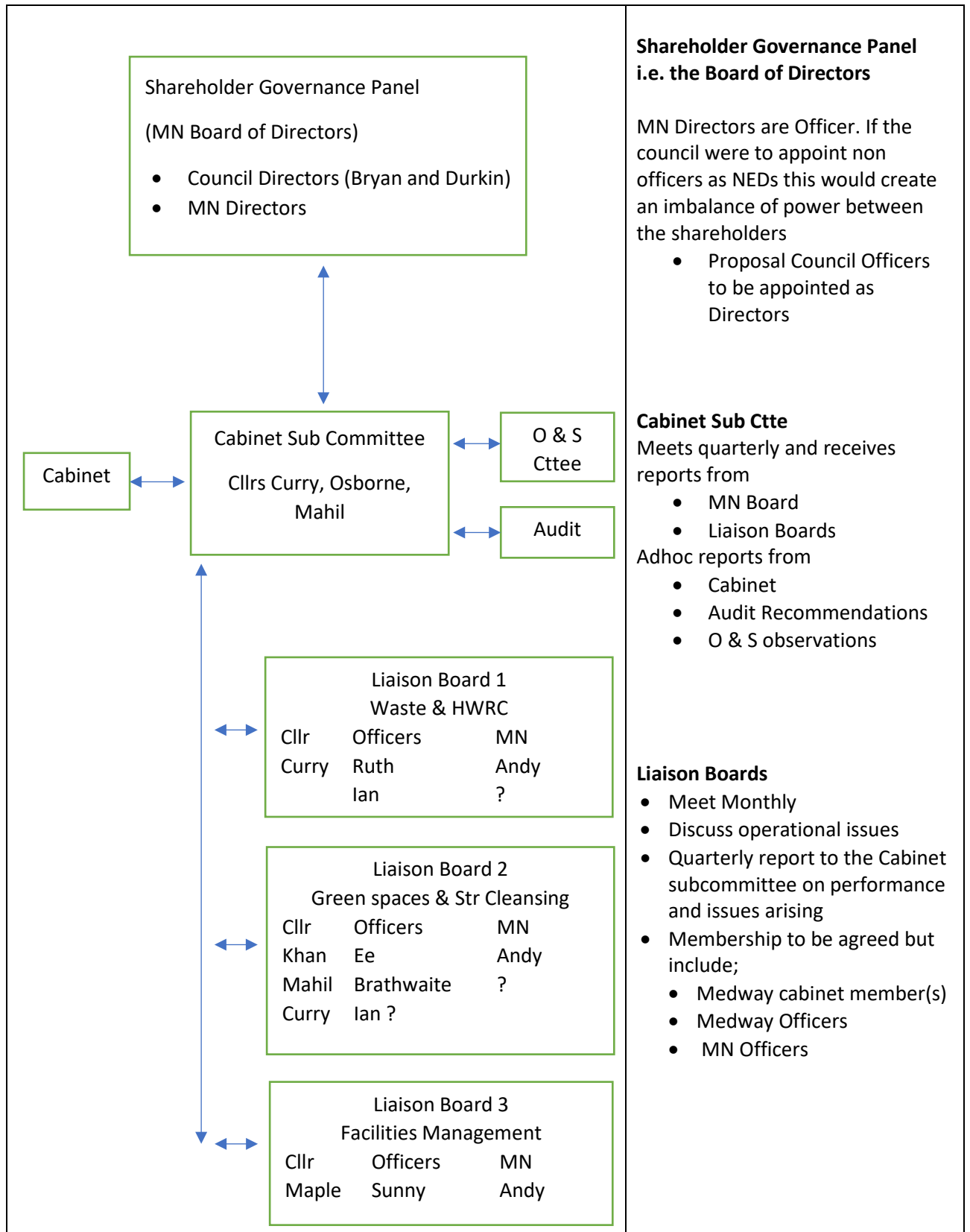


Medway Council

Internal Governance Structure for Medway Norse



**Shareholder Governance Panel
i.e. the Board of Directors**

MN Directors are Officer. If the council were to appoint non officers as NEDs this would create an imbalance of power between the shareholders

- Proposal Council Officers to be appointed as Directors

Cabinet Sub Cttee

Meets quarterly and receives reports from

- MN Board
- Liaison Boards

Adhoc reports from

- Cabinet
- Audit Recommendations
- O & S observations

Liaison Boards

- Meet Monthly
- Discuss operational issues
- Quarterly report to the Cabinet subcommittee on performance and issues arising
- Membership to be agreed but include;
 - Medway cabinet member(s)
 - Medway Officers
 - MN Officers