



Medway Safeguarding Children Partnership

Annual Report of 2022-23

OCTOBER 2023



	Page
Foreword	3
Key achievements	4
Section One – About Medway Children and Families	6
Section Two – The Partnership	8
Section Three – Independent Scrutineer’s Evaluation	10
Section Four – Evidence of Impact on priorities	13
Section Five – Learning and Improvement	22
Section Six – MSCP Budget	30
Appendices	31

Foreword

We are pleased to present the fourth annual report of the Medway Safeguarding Children Partnership (MSCP) which covers the period April 2022 to March 2023. The report provides information about the work and effectiveness of the safeguarding children arrangements during this period.

The MSCP is committed to safeguarding and promoting the welfare of all children in Medway. We want Medway to be a place where children are safe from harm in their homes, families and communities and we want to ensure the right service is delivered the first time.

This report recognises the progress that the MSCP has made throughout the year and sets out our commitment to continue to address the challenges that remain in 2023/24. During the year there has been a continued focus on the MSCP priorities which has included specific work around neglect and the implementation of the Graded Care Profile (GCP2). We have improved the governance arrangements to ensure that accountable officers are engaged in the strategic planning of the MSCP through accountable officer summit meetings and we have ensured there has been a continued focus on learning from reviews and taking action to improve practice.

As an Executive we are proud of the progress that has been made this year. We will continue to strengthen our leadership of the partnership to build on the improvements to ensure that children in Medway are safeguarded.



Dr Lee-Anne Farach
Director of People
Medway Council



Allison Cannon
Chief Nursing Officer
NHS Kent and Medway



ACC Simon Wilson
Kent Police

Key achievements

During 2022-23, key achievements of the MSCP include:

- Reviewing and updating the Medway Threshold Criteria to ensure it provides the right guidance and support for practitioners.
- Holding twice yearly accountable officer summit meetings to ensure accountable officers are kept up to date and can shape the future direction of the partnership.
- Responding to learning from reviews by reviewing the escalation process and gathering feedback to provide evidence that the process is working.
- The MSCP Executive regularly consider the learning from relevant national reviews and have taken action during the year to improve practice and seek assurances that any similar practice issues are addressed effectively in Medway.
- The MSCP Exploitation Champions have developed a newsletter and shared resources to support practitioners including a specific awareness raising link to the National Child Exploitation Awareness day.
- In response to learning from reviews, the MSCP has developed resources and hosted a series of webinars on the National Referral Mechanism (NRM) to ensure practitioners know what support is available to children who are at risk of trafficking. This has resulted in increased use of the NRM.
- Undertaking an NSPCC Implementation review of the GCP2 in Medway which evidences the strength of the training and identifies the next steps needed to further embed the use of the GCP2 in Medway
- Undertaking an external review of the MSCP and developing an action plan to further strengthen and develop the partnership.
- Completing the Section 11 Audit with 24 agencies, providing challenge across the partnership and evidencing how agencies meet the statutory safeguarding requirements (Kent and Medway joint audit with 51 agencies).
- The PMQA sub group has developed a new dataset aligned to the partnerships' 2022-23 priorities to make it easier to identify key trends and issues in relation to safeguarding children.
- Publishing the learning from Learning Review Andy in relation to a teenage suicide.
- Undertaking three multi agency audits highlighting areas of good practice and areas for development.
- Undertaking work to evidence how learning from case reviews is making a difference to practice and having an impact on children and young people.
- Between April 2022 and March 2023 the MSCP trained 789 people with 362 delegates attending face to face training and 427 delegates attending virtual training. This has ensured frontline practitioners remain up to date with the latest practice developments and has helped improve outcomes for children in Medway.

- Holding three multi agency conferences focused on Neglect, Domestic Abuse, and children with complex health needs attended by 378 delegates.
- Launching an MSCP YouTube channel and new online training booking system.

Section One – About Medway Children and Families

Medway is set around the river Medway within the Thames Gateway Growth Area. There are 5 main towns in the area: Chatham, Gillingham, Rochester, Strood and Rainham, as well as significant rural areas.

Between the last two censuses (held in 2011 and 2021), the population of Medway increased by 6.0%, from around 263,900 in 2011 to around 279,800 in 2021. The population here increased by a smaller percentage than the overall population of the South East (7.5%), and by a smaller percentage than the overall population of England (up 6.6% since the 2011 Census) (ONS, 2023)

In 2021, 5.6% of Medway residents identified their ethnic group within the "Black, Black British, Black Welsh, Caribbean or African" category, up from 2.5% in 2011. In 2021, 84.3% of people in Medway identified their ethnic group within the "White" category (compared with 89.6% in 2011), while 5.9% identified their ethnic group within the "Asian, Asian British or Asian Welsh" category (compared with 5.2% the previous decade).

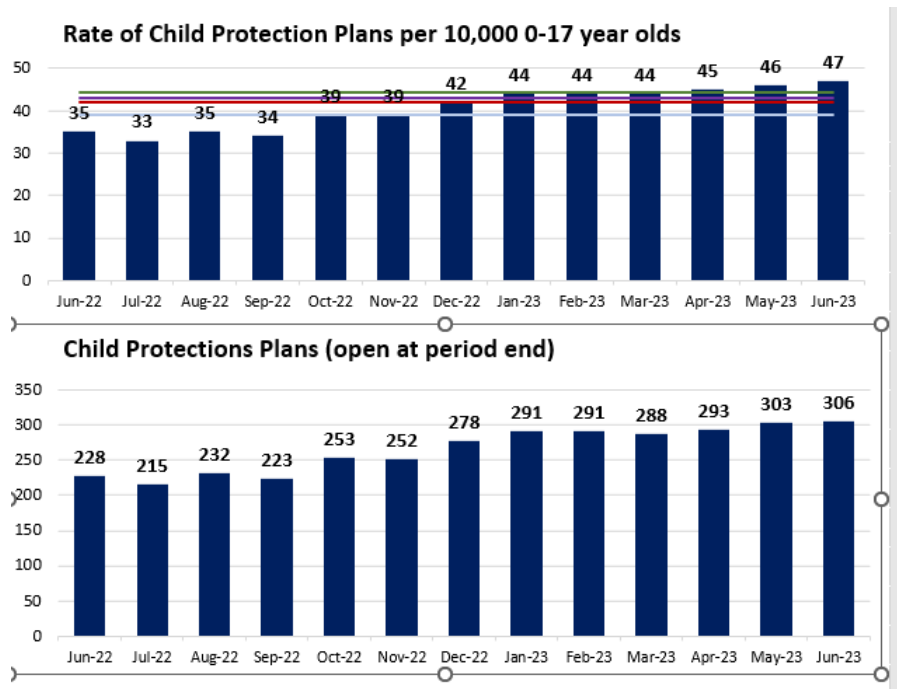
Overall, comparing local indicators with England averages, the health and wellbeing of children in Medway is below the England average. The Kent and Medway Integrated Strategy which was published during the year sets out how partners will work together to make health and wellbeing better which will help to address this. It also sets out how children will be given the best start in life across Kent and Medway.

The infant mortality rate is similar to England with an average of 13 infants dying before age 1 each year.

There were 288 children subject to a child protection plan at the end of March 2023, compared with 219 in March 2022. This equates to 44 children subject to a child protection plan per 10,000 of the child population and is slightly higher than the national average of 42 children subject to a child protection plan per 10,000 of the child population. This is lower than Medway's statistical neighbours¹ which is 45 children subject to a child protection plan per 10,000 of the child population.

There were 467 Children in Care at the end of March 2023 compared with 446 in March 2022. This equates to 71.4 Children in Care per 10,000 of the under 18 population and remains below Medway's statistical neighbours at 74 per 10,000.

¹ Statistical neighbour models provide one method of benchmarking progress. Each local authority is grouped with a number of other local authorities that are deemed to have similar characteristics – known as statistical neighbours. Medway's statistical neighbours are: North Lincolnshire; Telford and Wrekin; Dudley; Thurrock; Havering; Northamptonshire; Rotherham; Southend-on-sea; Kent; and Swindon.



Historically Medway is one of only a small number of local authority areas that has included one or more youth detention centres within its borders. Such centres are national resources, that is children coming from all over England (and in some circumstances Wales) may be placed in a Medway centre. At the moment HM Prison Youth Offender Institution Cookham Wood can accommodate up to 120 boys. Plans are advanced to open a further centre, Oasis Restore, which could accommodate a further 50 boys, in Rochester in early 2024.

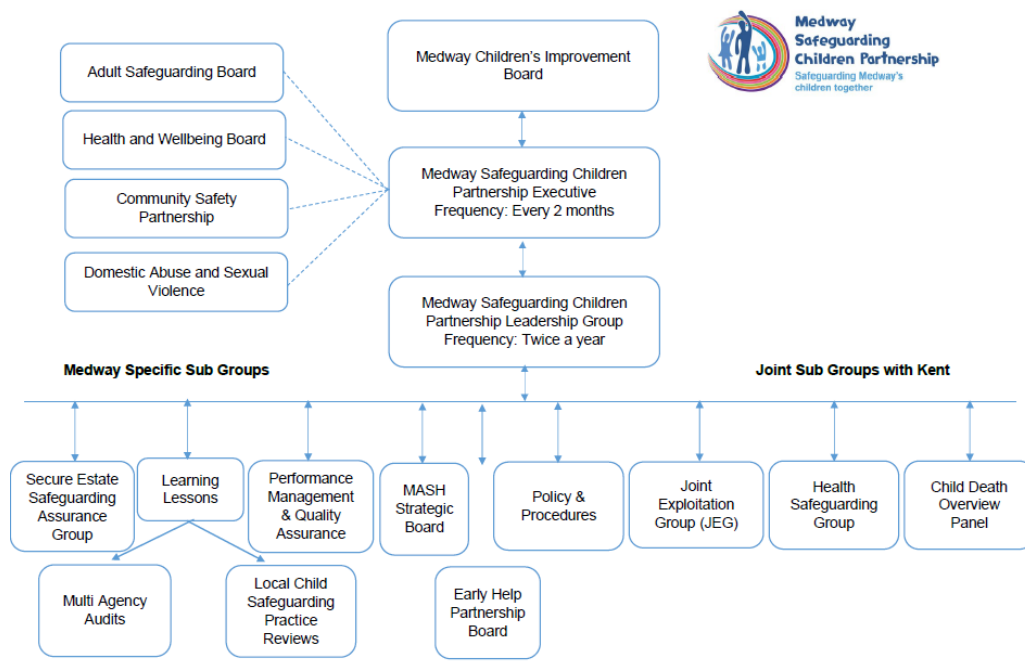
Section Two – The Partnership

Medway Council, Kent Police and NHS Kent and Medway are the three safeguarding partners that make up the MSCP. In July 2022, NHS Kent and Medway Integrated Care Board (ICB) replaced Kent and Medway Clinical Commissioning Group (CCG). During the year, the MSCP Executive was engaged in the planning for the ICB to ensure appropriate representation and that safeguarding children remains a priority.

The MSCP works with relevant agencies through its sub-groups and Leadership events. The MSCP acknowledges the support from relevant agencies in relation to their engagement and continuation to the sub-groups, delivery of training and engagement with multi-agency audits and case reviews. A full list of relevant agencies can be found in Appendix Two.

The MSCP Executive is jointly chaired by the three partners on a rotational basis. Lee-Anne Farach, Director of People, Medway Council took over as Chair in September 2022 from Paula Wilkins, Executive Chief Nurse, Kent and Medway CCG. Dame Eileen Sills took over as the Executive member for NHS Kent and Medway and has been replaced by Allison Cannon. During the year, Kent Police membership of the Executive changed with ACC Simon Wilson taking over from ACC Tracy Harman. The current Executive passes on thanks to Paula Wilkins, Dame Eileen Sills and Tracy Harman for their contributions.

Figure 1 – MSCP Structure Chart (April 2023)



Key Relationships

The MSCP has a joint working protocol for joint working with the Medway Health and Wellbeing Board, Kent and Medway Safeguarding Adult Board and the

Medway Community Safety Partnership. The protocol sets out the expectation that each Board will have the opportunity to see, comment on and challenge the priorities of other strategic bodies and be updated on progress on their work. The protocol sets out the commitment that all key strategic plans whether they are formulated by individual agencies or by partnership forums should include safeguarding children as a cross-cutting theme. This has helped ensure there is synergy between the priorities of the partnerships and boards and enabled joint work around domestic abuse and exploitation.

Independent Scrutiny

The role of independent scrutiny is to provide assurance, through monitoring and challenge, in judging the effectiveness and quality of multi-agency arrangements to safeguard and promote the welfare of all children in a local area. This is undertaken through objective scrutiny, acting as a constructive critical friend, promoting reflection to drive improvements, and reporting how well the safeguarding partners are providing strong leadership to fulfil their safeguarding children role.

Rory Patterson is the Independent Scrutineer for the MSCP. See Section three for the Independent Scrutineer's evaluation.

The current MSCP Independent Scrutineer, Rory Patterson, was appointed in December 2019. During the year, the MSCP Executive agreed to extend the contract for a further 12 months to January 2024. This was to provide stability and continuity over the short term for the MSCP particularly with an Ofsted Inspection of Local Authority Children's Services (ILACS) in 2023. It will also allow time for the MSCP Executive to agree future options for independent scrutiny and allow a planned handover with the new arrangements.

The independent scrutiny arrangements for the MSCP also include a specific function for the secure estates. John Drew is the Independent Scrutineer for the Secure Estate. During the year the MSCP Executive extended the contract to January 2025. This was to ensure there is continuity of the current assurance arrangements that have developed over the last three years and with the Secure Estate Safeguarding Assurance Group. The two year extension will also ensure that the current arrangements are in place for the opening of the new Secure School in Medway which is now scheduled for 2024. The work of the Independent Scrutineer for the secure estate includes:

- Chairing quarterly Secure Estate Quality Assurance meetings
- Maintaining regular contact with key individuals involved in safeguarding (e.g., Local Authority Designated Officer, Head of Safeguarding in the establishments, other parties)
- Undertaking periodic liaison visits to Cookham Wood
- Overseeing the production of the annual 'Review of Safeguarding and Restraint'.

Section Three – Independent Scrutineer’s Evaluation

I have continued to meet with partners and practitioners across the partnership. I have attended Executive meetings and reviewed sub-group meetings agenda items and minutes with a particular focus on impact and whether they are meeting their objectives. I have also undertaken a more detailed review of the detention of young people in police custody which was accepted by the Executive.

Three core partners are actively involved in strategic planning and implementation.

The three core partners in Medway continue to be fully engaged in the development and implementation of the local strategy which is due for renewal in 2023. There continues to be a turnover of representatives from the statutory partners on the Executive with changes both in the Police and ICB representation. While this isn’t ideal, it is possible that this may have hindered the development of the partnership. However, the group comprises individuals of considerable experience who remain committed to developing a strong partnership. The Executive may wish to consider building in some additional time outside of the formal meetings to work on partnership development to mitigate the impact of senior leadership turnover.

One of the strengths of the partnership is its openness to scrutiny and challenge. In addition to my own work, the Executive commissioned an independent expert to provide further scrutiny of the effectiveness of partnership working. The findings of this report were welcomed by the Executive and its recommendations have been incorporated into the partnership workplan.

The Executive is supported by a knowledgeable and experienced business manager who has ensured that it has remained focussed on its priorities. The business manager has a small team which supports the partnership’s sub-group infrastructure and ensures that the workplan is progressed.

Medway has an established Accountable Officers Meeting to ensure the statutory partners remain well informed on the issues facing the partnership and can address strategic issues in relation to staffing resources, funding and overall direction. The business manager provides regular statutory partner briefings to ensure senior officers are well informed. This is evidence of a strong commitment to safeguarding children at the highest levels in the three statutory partners.

Involvement of wider safeguarding partners (including relevant agencies)

Partners are actively engaged with the sub-groups and chairing is shared among agencies. This has helped to develop good professional working relationships where staff feel more able to challenge their colleagues. The partnership has not been able to meet its ambition to hold any in-person leadership events, however it has delivered a well-attended conference on

Neglect which is one of its five priorities. The conference had some strong keynote speakers supported by more detailed presentations on operational approaches to working with neglectful families. These events are particularly important for engaging the wider partnership and ensuring that relevant agencies remain well informed about local priorities, in the absence of leadership events.

The partnership has quality assurance and data monitoring systems in place through the following sub-groups: Performance Management and Quality Assurance (PMQA); Learning Lessons; and Case File Audit Group. These groups are well attended and provide an effective check and challenge to the system. The PMQA sub-group has reviewed the dataset to align it with the partnership's priorities, although this remains dominated by social care data. While the dashboard is a positive development it is important that all partners contribute to the dataset to enable a more rounded picture of progress against the partnership's priorities. For example, information could be provided on the impact of Operation Encompass where information is shared with schools when children have been in a household where there is domestic abuse.

The learning lessons sub-group continues to monitor the implementation of actions from child safeguarding practice reviews and learning lessons reviews. This ensures that learning is disseminated widely across the system and is fed into the learning and development programme. The sub-group has organised a number of Lean Learning Events and briefings to ensure that learning is disseminated quickly to the front line. This area of activity could be strengthened further by having a greater focus on the impact these actions have on the quality of provision and the partnership's priorities.

The ICB has a health safeguarding and looked after children sub-group. A children's health reference group feeds into the safeguarding group to ensure priorities in relation to children's safeguarding can be monitored and improved. As these are single agency safeguarding groups, it would be helpful to have a more formal reporting line into the Executive in a similar way to other partnership sub-groups.

The Executive has recognised the value of engaging school leaders in strategic decision making and representatives from primary and secondary settings attend the Executive meeting. The relationship between schools the local authority, and children's social care, has improved significantly over the past few years, although more could be done to enable head teachers to influence the strategic direction of the partnership. The value of having strategic school leadership engagement with the safeguarding partnership has been recognised nationally, and work is underway to consider how best to enable them to contribute more purposefully to the safeguarding agenda.

The partnership needs to reflect more on how it can evidence the impact of its activities. Given the heavy workload of the existing sub-groups and small size of the business unit it would be worth establishing a task and finish group drawn from the existing sub-groups to develop some evidence-based thinking and how this could better drive the partnership's activities. The sub-groups are mindful of the need to better evidence the impact of their work. To this end the

PMQA is considering how it can undertake an impact event involving practitioners and managers which will more clearly identify the impact of its activities.

Links to other partnerships and strategies

The Executive ensures that there are clear links with other partnerships and strategies where this impacts on safeguarding children, however there is a case for building a stronger relationship with the Domestic Abuse Strategic Group and bringing greater clarity to the relationship between the priorities for this group and the partnership. Similarly, there should be a clearer link with the Community Safety Partnership and how its approach to child trafficking and county lines dovetails with the work of the partnership.

The partnership has a good line of sight to frontline services and receives reports from the Multi-Agency Safeguarding Hub and Early Help Boards. This ensures the partnership is kept apprised of the strengths and vulnerabilities of frontline service delivery.

Notifications to the National Panel and Rapid Reviews

The partnership has a strong process for notifying the National Child Safeguarding Practice Review Panel where there have been serious incidents and has received praise for the clarity of its reporting and decision making. The statutory partners have a good level of trust and confidence in each other and have an effective process for reviewing and agreeing which cases should be notified by the local authority. Although the Rapid Review process is efficiently managed, some of the partner reports could be simplified and more focussed on relevant information which will support good decision making.

Children in custody in Medway

My fellow Independent Scrutineer, John Drew CBE, acts as an Independent Scrutineer in respect of children accommodated in HMP Cookham Wood as already described. His observations are to be found later in this Annual Report in the next Section under the title 'Keeping Children in Custody safe'.

Conclusion

Medway has an effective partnership with a strong commitment to multi-agency working and continuous learning. The statutory partners have developed a good working relationship and have a clear vision and strategy for how the partnership should develop. The partnership recognises that it still needs to make improvements, particularly in relation to identifying the impact and outcomes of its work. It needs to develop a more evidence-based approach to setting and delivering against its priorities. The partnership has also not been able to deliver on its ambition to hear the views of children and families and ensure that they shape the future direction strategy direction.

Section Four – Evidence of Impact on priorities

During the year the MSCP Executive took the opportunity to review whether the priorities set for the period 2020 – 2023 were still current. A new Strategic Plan was published in April 2022 and a sixth priority was added around violence against women and girls and sexually harmful behavior. The Strategic Plan was disseminated across the partnership so that all partners understood the priorities and areas of focus. A summary of the key activity against each of the priorities is below:

Priority One – Effective Partnerships

Schools, colleges and other educational providers play a pivotal role in safeguarding children in Medway and the role of schools in the partnership continues to be important. Formal representation from both the primary and secondary head teacher forums on the Executive has enabled schools to shape the safeguarding agenda and engage the wider school leadership in the partnership. For a period during the year there was no secondary head teacher forum but this was resolved in January 2023 following discussions with education leaders.

A working group was set up to review the Medway Threshold Guidance ‘ A multi agency guide to assess levels of need and identify the most appropriate support in Medway’. This provided an opportunity to ensure that the thresholds were right and that the accompanying training videos were fit for purpose. The main change made to the guidance following feedback was to change the references to Lead Professional in the document to Lead Practitioner and the updated guidance was launched in November 2022.

The MSCP holds Leadership events which are run as safeguarding conferences with attendance from safeguarding partners and relevant agencies. During the year a Leadership event was held in November 2022. It was attended by over 80 professionals, focused on Early Help and was used to launch the updated threshold guidance. The partnership has not had the opportunity to develop its plans to develop a Communication Strategy to help evidence how effective communication with partners is, but this will be a key focus of work in 2023-24. This will include developing the work to engage with the voluntary and community sector and faith groups.

The MSCP continues to use its website and social media to promote safeguarding messages with professionals and members of the public. During the year, a refreshed MSCP website was launched, providing professionals with easier access to guidance and resources and making the learning from case reviews more prominent on the site. The MSCP has also made use of social media through its twitter account with 779 followers. During the year we have used twitter to promote training and events and to announce the publication of new resources.

The MSCP hosted several multi agency conferences, briefings and training events which are detailed in section 5. One of these was a multi-agency event

to address issues identified when working with adolescents with complex healthcare needs. The event, held on Microsoft Teams, was attended by 119 professionals and covered healthcare pathways, children's services pathways, support pathways and understanding capacity and consent.

Twice yearly Accountable Officer summit meetings are held to keep the accountable officers up to date with key developments in the partnership and enable them to contribute to priority setting. These meetings provide the opportunity for the three accountable officers from Kent Police, NHS Kent and Medway and Medway Council to help shape the future direction of the partnership. The summit meetings, held in May and November 2022 were chaired on a rotational basis.

In previous years, a number of reviews have found that practitioners are not always making effective use of the escalation process and challenging agencies when plans for children are not progressing as they should. During the year the escalation process has been updated and the MSCP are now sent a copy of any Stage 2 and 3 escalations. The MSCP is able to evidence that the escalation process is now being used regularly, although its use will continue to be promoted with partners. Feedback on the use of the escalation process is now being gathered and there is evidence from some cases that the process has worked well and has had a positive impact on the child.

Practitioner feedback on the escalation process

"...Yes, using the escalation process was useful as the practitioner working on the case came to me feeling they had tried everything and the children needed to be removed..."

The PMQA subgroup meetings have allowed partners to come together to consider data and review any areas of concern. Following concerns raised at one of the meetings by Medway NHS Foundation Trust that if a missing child or young person attended Medway Hospital there were no processes in place to identify them as missing and safeguard them, work was undertaken with Medway Children's Services to develop a process where the hospital now receive and review the daily missing children list. Once received an alert is added to the hospital system, along with a flag advising that the child is recorded as missing and that the Police and social care should be contacted. This is a good example of the role partnership subgroups can play, and it is positive that there is now a robust process in place to identify missing children if they attend hospital, ensuring that appropriate action will be taken to safeguard them.

Priority Two: Contextual Safeguarding and trauma informed practice

The Joint Exploitation Group (JEG) is a joint sub-group between the MSCP and the Kent and Medway Safeguarding Adults Board (KMSAB). The JEG also has links with the Kent Safeguarding Children Multi agency Partnership (KSCMP), Kent Community Safety Partnership and the Medway Community Safety

Partnership. The group oversees multi-agency activity around: Contextual Safeguarding; Sexual Exploitation; Criminal exploitation and gangs; Modern Slavery/ Human Trafficking; Online Safeguarding; Radicalisation and Extremism; and Unaccompanied Asylum-Seeking Children.

During the year, the Terms of Reference for the group have been reviewed which now include responsibilities for members to cascade information within their agencies and ensure the business of the group is embedded. From December 2022, each JEG meeting has had a focus on one or two specific themes and all partners are expected to contribute to the discussions. Themes discussed since December 2022 have included Online Safeguarding to plan for Safer Internet Day on 7 February 2023, Unaccompanied Asylum-Seeking Children and Prevent. JEG meetings continue to be well attended with over 25 partners at each meeting. Following each JEG meeting a summary of key points and themes is shared with all partners as part of the JEG bulletin.

Over the last year the JEG has introduced a quarterly contextual safeguarding report covering both Kent and Medway which informs partners of any patterns and trends covering issues such as emotional well-being, domestic abuse, missing children, county lines and serious youth violence. Some of the key themes from the last quarter of the year were that the levels of serious violence involving those under 25 remain lower than pre-pandemic levels but the levels of harm from knives and weapons have now returned to pre-pandemic levels.

The MSCP has a multi-agency network of exploitation champions who support the development of a safe, responsive and effective service for children and young people who experience or are at risk of exploitation. The MSCP Exploitation Champions have met regularly during the year to share resources and knowledge across the partnership. An Exploitation Express newsletter is produced by the group and circulated to partners sharing resources and learning from other areas. During the year the group have developed plans to champion National Exploitation Day by developing resources and training. As a direct response to concerns about the cost of living and the impact that this was having on some families in Medway during the year and potentially putting them at risk, the champions developed a 12 days of Christmas giving appeal to collect donations of warm clothing, blankets and treats to help towards reducing the risk of exploitation for children and families in Medway. All donations were delivered to charities to distribute around Christmas 2022.

During the year the MSCP developed a workstream to support professionals around the National Referral Mechanism (NRM). The NRM is a framework for identifying potential victims of human trafficking and modern slavery, ensuring that they receive appropriate multi-agency support. Two webinars were hosted jointly by the MSCP the Home Office and Barnardo's and a specific webinar was held for schools in Medway. This has helped to ensure that practitioners know when and how to make a referral to the NRM and what support is available to children under 18 who are being exploited.

The MSCP held a multi-agency LEAN/SWOT event to look at our response to Child Exploitation. The aim of the event was to review the current multi-agency response to child exploitation in Medway and identify strengths, gaps,

challenges and improvements we can make together. The findings of the report will be taken forward during 2023-24.

Priority Three: Domestic Abuse

The Kent and Medway Domestic Abuse and Sexual Abuse Executive (DASAEG) has continued to meet throughout the year. Its overarching purpose is to reduce domestic abuse and change attitudes, acting as a coordinating body between partners.

The MARAC Steering group continue to review the MARAC process, a new model has been agreed and funding has been secured from key partners. The group has also been reviewing case management system options, and their suitability for Medway. The early stages of the recruitment process for the Hub roles has started and the posts will be going out shortly.

A close down report, highlighting key achievements and progress in line with the existing domestic abuse strategy has been completed, in preparation for the drafting of the new Domestic Abuse Strategy 2024-29. Consultations with key partners have started and key themes for the new strategy have been identified, with the aim of going out to public consultation across the summer period.

The Medway Domestic Abuse Local Partnership Board (MDALBP) continues to be well attended across the Partnership and works to fulfil Part 4 of the Domestic Abuse Act 2021, in relation to the duty around safe accommodation. The meetings continue to shape and inform commissioning decisions in relation to domestic abuse support services across Medway.

MSCP continues to support Public Health, Housing and the commissioned IDVA service Oasis, to deliver Advanced Level Domestic Abuse Training to children's social care on a quarterly basis.

Referrals into the core IDVA support service Medway Domestic Abuse Service (MDAS) delivered by Oasis, have seen a steady increase year on year, and this is being closely monitored via contract review meetings with commissioners. The service is due for re-commissioning in April 2024, and work to initiate this process has begun.

The One Stop Shop continues to have good attendance from victims/survivors, and their families, with attendance steadily increased since the service re-opened following the easing of Covid-19 restrictions.

Priority Four: Violence against Women and Girls

In September 2022, the MSCP Executive agreed to add a sixth priority to its strategic plan to support the partnership work around violence against women and girls. The MSCP has been working alongside Kent Police to support the delivery of the partnership aspects of their Tackling Violence against Women

and Girls Strategy 2021-24. National data shows that one in five women are victims of sexual assault (or attempted assault) in their lifetime (5% of victims are men), over 27% of women had experienced domestic abuse since the age of 16 (14% of men), and 20% of women aged 16-74 had experienced stalking since the age of 16 (10% of men). The picture in Kent and Medway is similar.

A key focus of the MSCP work has been on the development of guidance and learning opportunities for practitioners to ensure Medway professionals are aware of services for children and young people and harmful sexual behaviour pathways. A working group has met during the year to develop and publish the Kent and Medway Harmful Sexual Behaviour Guidance to ensure young people displaying harmful sexual behaviour get appropriate support as early as possible.

Priority Five: Neglect

Neglect can have a huge impact on children and young people. It often increases over time gradually and can be hard to detect so there's a risk that agencies do not intervene early enough to prevent harm. Neglect has been a key priority for the Medway Safeguarding Children Partnership (MSCP) for 2021-23 because we know that both nationally and locally, neglect is a key feature in a number of cases. We also know from audits that it is an issue that is not always consistently identified and assessed.

During the year, the Neglect Strategy Implementation Group has continued to meet to support the delivery of the Neglect Strategy. Work during the year has included developing a Neglect Strategy Action Plan for 2022-23; ensuring practitioners are trained to identify neglect and developing data around neglect. The group planned the MSCP Neglect Conference in March 2023 focused on 'Stopping Neglect' which was attended by 130 delegates. The conference brought together practitioners from a range of agencies with keynote speeches by Professor Anna Gupta and Professor David Shemmings alongside updates from Medway agencies to discuss progress across Medway in tackling and addressing neglect.

The MSCP has adopted the Graded Care Profile (GCP2) as the assessment tool for neglect for all partner agencies. The GCP2 is a practical tool which helps practitioners measure the quality of care delivered to a child from an individual carer or carers over a short period of time. It is designed to give a representative overview of the current level of care. In this year, three new trainers completed the GCP2 train the trainer session and in total there are now seven trained trainers from across the partnership delivering the training. The increase in trainers will improve the continued role out of the use of GCP2 across Medway. To date across Medway, 432 practitioners have completed the training and become licenced practitioners to use the GCP2.

In June 2022 a themed audit on neglect was undertaken by the Case File Audit Group (CFAG). The audit identified that in a number of cases, practice had improved in the previous twelve months. The audit showed that the GCP2 is being used by practitioners. However, it identified that whilst the GCP2 is being used, in some cases it could have been used sooner and that the GCP2 should

be regularly reviewed by practitioners. Following the audit, these two issues have been a focus in training.

Additional funding has meant that the MSCP has been able to broaden the range of neglect training and further upskill practitioners by delivering the Rosie 2 immersive training. Rosie 2 explores neglect in a virtual gaming environment and simulates a home visit by professionals meeting the family. Rosie 2 can be used with specific tools such as the Graded Care Profile 2 and Signs of Safety.

During the year, the NSPCC undertook an evaluation of the implementation of the GCP2 in Medway which showed that Medway was performing particularly well in ensuring that systems and processes are fit for purpose and don't create any barriers for practitioners using the tool. It also showed that there was strong evidence that the GCP2 trainers are well supported to deliver quality GCP2 training to practitioners, and the use is well monitored. This was positive and showed that implementation of the GCP2 is working but there is further work to do to ensure this is embedded. One of the focuses through the year has been on developing the data collection and monitoring around the use of the GCP2 and partner agencies are now reporting this to the MSCP. There is some evidence of outcomes and some positive examples of the use of the GCP2 have been shared through the Neglect Champions meeting, but further work is needed to be able to evidence outcomes and the impact which will be developed in 2023-24.

Priority Six: Effective Early Help

During the year the Early Help Partnership Board has continued to drive forward the key principles of the Early Help Strategy by promoting a partnership approach to early help focused on families receiving the right support at the right time and in the right place.

A key part of the promotion of the Early Help Strategy was through the MSCP Leadership Event in November 2022. At the event there were updates from partners through the Early Help Partnership Board and practitioners had the chance to talk about what is working well and what the challenges are in delivering effective early help to children and families in Medway.

The Early Help Partnership was involved in the review and launch of the Threshold guidance and the key changes from 'Lead professional' to 'Lead Practitioner' has been updated and reflected in the Early Help strategy.

A multi agency audit held in September 2022 focussed on cases who have stepped down to Early Help/Family Solutions. This revealed that some cases were being stepped down without full child and family assessment information. Whilst this was being addressed and some progress has been made the overall virtual audit findings were rated as Requires Improvement (3 audits) and Inadequate (2 audits). Strengths from the audit included the continuity of workers for families was a positive factor for positive outcomes and there was some evidence of challenge when assessments were incomplete.

A key priority for the partnership has been the development of early help partnership data. An early help data analyst has been appointed within Children's Services and an early help partnership dashboard is being developed which will enable the partnership to monitor themes and trends and evidence the outcomes and impact of the early help work.

The board has ensured that strategically early help remains a priority across the partnership however throughout the year has identified the need for an operational group to drive the priorities identified. The operational group will enable performance across the partnership to be reviewed and scrutinised, alongside bimonthly reporting to be shared with the board. This will enable the board to hold all partners to account, celebrating achievements and challenging performance when needed.

External Review of the MSCP

In December 2022, the MSCP Executive commissioned an Independent Consultant to undertake an External Review of the MSCP – the purpose was to evaluate the leadership of the safeguarding arrangements in Medway and to identify areas to develop the arrangements to improve outcomes for children. The review considered a range of key strategic documents alongside a number of meetings with key partners including focus groups. The MSCP Executive considered the findings in March 2023 and are in the process of developing an action plan to take forward the recommendations. Positively, the review found good examples of the openness, engagement and passion of agencies and evidence of challenge through the partnership. It found the multi agency training offer to be very comprehensive and was positive that there was a good strategic plan in place and strategies around the priorities of early help, neglect and contextual safeguarding. The areas of improvement the Executive will be focusing on during 2023-24 are:

- Using this as an opportunity to reset the purpose of the Executive on system leadership and to become more outcome focused;
- The need to become more data driven;
- Ensuring that the Executive are acting quickly on audit findings and making use of the learning from the national panel.

Ensuring children in secure units are safe

The Safeguarding Partnership continues to maintain a Secure Estate Safeguarding Assurance sub-group in recognition of Medway's unusual position in being the site of one of only five children's prisons in the country, HMP Young Offender Institution (YOI) Cookham Wood on the outskirts of Rochester. This is a national resource, and at any one time accommodates about 80 boys out of a total of approximately 430. These are mainly 16- and 17-year-olds.

The sub-group meets quarterly and is chaired by John Drew CBE who is the independent scrutineer for this function.

There is a high level of engagement from members of the partnership in overseeing the safety of children in the prison, work that is powerfully enhanced by HM Inspectorate of Prisons (although they are not members of the sub-group, at their choice).

However, a high level of engagement is no guarantee that children in custody are kept safe. All England's YOIs represent severe challenges in terms of safety, and in no sense is Cookham Wood an exception to this. At the close of this year the Prisons Inspectorate were poised to carry out their bi-annual inspection. Reporting in early 2023/2024 (i.e., outside the scope of this annual report) their report indicated very serious problems existed in the prison and the response to these will be reported in the next Annual Report. In summary the national Youth Custody Service are struggling to get near to reaching the Inspectorates 'healthy prison' test and Cookham Wood is the lowest ranked of all children's prisons against this test. Levels of violence are very high, morale amongst staff is low, and the main means of maintaining control have at times been reduced to keeping children separated one from another, which can be seen as a form of abuse itself when practised excessively.

Safeguarding partners have been well sighted on these problems and a number of challenges have been presented locally and nationally about specific incidents in the prison. But the difficulties with making such challenges, particularly those at a national level, were highlighted by a public comment made by the Chief Inspector of Prisons in April 2023 that no senior leader of the Youth Custody Service had visited the prison in the two months following the appointment of a new Governing Governor in February 2023.

Since the most recent inspection the safeguarding partnerships have further prioritised its levels of scrutiny and challenge. The impact of this will be commented upon in the next annual report.

In the year the sub-group also oversaw the results of a learning lessons review into a historical episode at the now closed Medway Secure Training Centre at Rochester. There were strong lessons about the importance of working together for children in custody from this review, and we held a well-attended learning dissemination seminar. It was notable, however, that despite invitations, and the fact that the meeting was a virtual webinar, staff from the Youth Custody Service did not attend.

Voice of Children and Young People

The MSCP is committed to listening to the voice of the child and improving engagement with children and young people in all aspects of our work.

The MSCP shares the ambition for Medway to become a child friendly city, where all children and young people have a meaningful say in, and benefit from, the local decisions, services and spaces that shape their lives. Child Friendly Medway holds City Hall events throughout the year to help young people shape Medway's future and to give children and young people the chance to talk about what matters most to them. The Medway Youth Service have worked closely with South Eastern railways and schools during the year which has involved

young people developing an agreement to support safer rail travel. During the year, they have developed plans to ensure that young people at HMYOI Cookham Wood have the opportunity to give their views as part of the annual review of restraint and safeguarding 2022-23.

Section Five – Learning and Improvement

The MSCP is a learning organisation where ‘Learning is a habit not a goal’ and supports the development of Medway professionals. The MSCP has in place a Quality Assurance Framework which sets out how the MSCP monitors and evaluates the effectiveness of multi agency work to safeguard children.

The model includes:

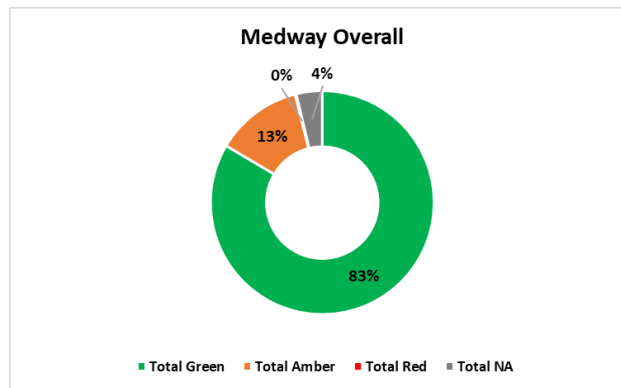
- Use of performance data
- Multi agency audits
- Single agency audit reporting
- Section 11 audits
- Learning from case reviews
- Independent scrutiny

Section 11 Audits

Section 11 of the Children Act 2004 places a statutory responsibility on key agencies and organisations to make arrangements to ensure that in discharging their functions, they have regard to the need to safeguard and promote the welfare of children. The Section 11 audit is a self-audit and repeated by the MSCP in full every two years. The MSCP uses the Section 11 audit to provide assurance around how agencies are working to safeguard children.

In June 2022 a joint launch event for the Section 11 audit was held with Kent. All Medway agencies completed the audit and across Kent and Medway 51 audits in total were completed, with 24 being Medway agencies. Three surveys were also launched targeted at front-line practitioners, the wider workforce and managers. A total of 947 responses to the surveys were received across Kent and Medway. The purpose of the surveys was to assess safeguarding day to day practice and to build up a picture to compare with the section 11 audits. Both the survey responses and audit submissions were analysed and a series of multi-agency review panels which provided a further element of challenge and scrutiny were held.

Analysis shows that the majority of gradings in Medway were fully met. 83% were fully met and 13% were partially met. There were no areas across any of the audits which were not met. Following their audit, each agency developed an action plan to enable them to move forward with partially met standards. It is positive to report that so many agencies are compliant on most of the Section 11 standards.



Key areas of development from the Section 11 audit:

- Awareness and knowledge of Private Fostering
- Knowledge and use of the Medway Challenge and Escalation processes
- The voice of the child is a continued area of focus

In order to highlight the good practice and to share the areas for development, a Microsoft Sway 'Emerging themes and promising practice' was produced and circulated to all partners.

As a result of the Section 11 audit, the Executive can have some assurance that agencies are meeting their statutory requirements and that where there are gaps, they have put in place actions to develop these areas. Awareness and knowledge of private fostering was identified as an area for development and as a result, information has been shared with partners with signposting to information on the Medway Council website. A review of the Section 11 process with Kent is planned for later in 2023 to ensure that it continues to be an effective and rigorous process.

Multi agency dataset

The PMQA subgroup developed a new dataset for 2022-23 with the support of Medway Council Performance Team, using Power BI to display the data. This makes it more visual and easier for partners to interpret. Consultation with partners took place in June 2022 through three dataset workshops to support a review of the data and to consider whether the correct data is being collected and whether it is being presented in the most meaningful way. Partners engaged well in the workshops and the new dataset was launched in November 2022. This has been a successful piece of partnership working for the subgroup. Partner agencies submit on a quarterly basis their agency data to the PMQA subgroup. Analysis of the dataset has identified the following issues:

- In quarter 4 there were 3597 contacts to children's social care which was an increase on previous quarters. 1183 of these were from schools.
- The number of referrals made to children's social care by the adult mental health provider, Kent and Medway NHS Partnership Trust (KMPT) increased from 17 in quarter 3 to 169 in quarter 4. One of the main reasons for the increase is the timely recognition of parental mental

health on children promoted through training and safeguarding supervision.

- The PMQA subgroup has identified the under utilisation by partners of the soft intelligence referrals for child exploitation. PMQA members have requested that the Kent and Medway soft intelligence portal should be republished following the launch of the new Kent and Medway child exploitation toolkit. The relaunch is planned for 2023-24.
- The PMQA subgroup have raised concerns about referrals from health to children's services classified as 'other primary health services'. Given that this is over 60% of the health referrals, the PMQA subgroup recommended that there needs to be an analysis of what agencies are recorded under this category. This is being reviewed by the MASH Operational Group and will be reported back to the PMQA subgroup to close the loop.
- Over each quarter for 2022-23, return home interviews were offered to all children that went missing and 100% return home interviews were completed. The number of return home interviews being completed within 72 hours has increased from 62% in quarter 1 to 77% in quarter 4. Work is being undertaken to focus on reaching a target of 80% completed within 72 hours.
- We are now able to monitor the use of the Graded Care Profile 2 (GCP2) tool. During 2022-23, 57 GCP2 tools were completed.

Rapid Reviews and Local Child Safeguarding Practice Reviews

Child Safeguarding Practice Reviews (formerly Serious Case Reviews (SCRs) are undertaken when children die or are seriously injured, and abuse and/or neglect are suspected or known to be a factor, and/or there are concerns about how local agencies worked together. Local Safeguarding Children Partnerships may decide to conduct a Local Child Safeguarding Practice Review (LCSPR) if a child has been seriously harmed and in accordance with the guidance in Working Together to Safeguarding Children (2018). The purpose of reviews of serious child safeguarding cases, at both local and national level, is to identify improvements to be made to safeguard and promote the welfare of children.

Rapid Reviews are undertaken following the notification of a serious incident and must be completed within 15 working days. During 2022-23, the MSCP did not complete any Rapid Reviews. This compares to two Rapid Reviews that were completed during 2021-22. However, the MSCP Executive is assured that the notification process to trigger Rapid Reviews is effective and that the numbers are in line with expected trends. In previous years, the National Panel has commented that the Medway rapid review reports have been comprehensive, well structured and identified all relevant learning.

During the year, the MSCP has not published any LCSPRs but in April 2022, the MSCP published a briefing sheet on Learning Review Andy in relation to a teenage suicide. The global pandemic of coronavirus and the impact of lockdown created unprecedented conditions in the context of suicide risk, contributing to the scenario of a 'perfect storm.' This scenario is likely to be true for Andy and many young people who have so tragically lost their lives to

suicide. Learning from this review, including the relationship between suicide and ADHD/ ASC were shared at a multi-agency conference for professionals hosted by the Kent and Medway Children and Young People Suicide Prevention Network. As a result of the review youth suicide prevention training was delivered through West Kent Mind to all partners alongside e-learning training. The Medway suicide rate is statistically similar to both the national and south east region averages.

Multi Agency Audits

The MSCP has in place a Multi-Agency Audit Group, the Case File Audit Group (CFAG) whose role it is to undertake audits to identify good practice and multi-agency learning. Each quarter the CFAG focuses on a theme and spends the day reviewing cases. The theme of the audits is agreed by the MSCP Executive and works on a rotation.

After each audit is completed an overview report giving brief summaries of the cases with grading and themed learning is produced. This forms the basis of the MSCP action plan for that audit to address challenges identified. Most actions focus on improving practice which can be difficult to monitor and evaluate for impact as it is part of day to day working with families.

The MSCP Independent Scrutineer has identified the work of the Case File Audit Group (CFAG) as one of the strengths of the system and there is a strong link to the learning lessons subgroup which monitors implementation of actions from reviews and audits. The programme is based on the partnership's priorities and is able to highlight areas for learning and improvement. During 2022-23, the MSCP completed three multi agency audits.

Themed audit: Neglect (June 2022)

In this audit in the judgement for the overall quality of the multi-agency working, four cases were graded as requires improvement and one case as good. The audit found that in all cases there is now an appropriate focus on neglect and the GCP2 tool was also being used across neglect cases. There was also evidence of direct work taking place with the children but consideration of children's experiences in the home are not analysed. Whilst there was evidence of the use of the GCP2, there have not been reviews of the tools. In some cases the tool could have been used sooner and as a part of the earlier assessments. There does need to be evidence of more consistent use of the GCP2 at earlier stages with neglect to be an effective tool.

Themed audit: Early Help (September 2022)

In this audit in the judgement for the overall quality of the multi-agency working, one case was graded as good, two cases were graded as requires improvement and two cases were graded inadequate. In some cases, there was positive engagement between schools and Family Solutions providing effective support and being a protective factor for the children. This audit highlighted a repeating pattern of missing health information in particular from the acute setting and

mental health settings. This was due to a lack of information requests, invitations to strategy discussions or notification of step downs. This issue has now been addressed through the PMQA subgroup and Medway NHS Foundation Trust are now included in invitations to strategy discussions to ensure the acute setting and maternity services are aware. This audit also highlighted that safety plans need to be robust and include the children as appropriate.

Themed audit: Child Mental Health (December 2022)

In this audit in the judgement for the overall quality of the multi-agency working, one case was graded as good, two cases were graded as requires improvement and two cases were graded inadequate. In the good case there was evidence of early intervention and persistence by practitioners to get support for the child and family. This audit highlighted the need for improved engagement and working with fathers and a need for wider and improved use of the MSCP escalation policy to address concerns earlier.

Evidence of Impact of learning from reviews and audits

During the year, the MSCP undertook a survey with partners to understand how learning from case reviews is shared, whether this is reaching the right practitioners and whether the reviews are embedding change in practice. An online survey was sent out to practitioners asking a series of questions to determine if practitioners had heard of the different learning reviews, whether they were aware of learning and whether this had an impact on their practice.

The majority of practitioners in this survey (93%) reported that they felt that hearing about learning from case reviews can help to improve the way they work with children and families. This shows that practitioners across Medway recognise the impact that learning from case reviews can have on improving practice. The survey showed that case reviews have brought about change to: policy and procedures; information sharing; challenge and escalating professional concerns; professional curiosity and; encouraging partnership working.

One of the findings from this survey was that there is evidence that learning from case reviews is making a difference to practice, however, this is not currently gathered or collated in a meaningful way. In order to more accurately measure the impact of learning reviews on practice, the PMQA subgroup is developing plans to hold Evidencing Impact events for practitioners during 2023-24.

How the MSCP has used learning from other local and national reviews

At each MSCP Executive meeting, members consider the findings from key national reviews and any relevant learning from other local reviews. In June 2022, the MSCP Executive considered the findings from the national review into the deaths of Arthur Labinjo-Hughes and Star Hobson. An extraordinary

meeting of the three safeguarding partners was set up to assure ourselves that the practice issues highlighted in the review were being dealt with effectively in Medway. The key messages for practitioners were shared across the partnership. In addition, following the publication of the national review into safeguarding children with disabilities and complex health needs in a residential setting, the MSCP oversaw the response to the national panel including the urgent action for all local areas which included a multi agency review of quality and safety reviews.

In response to the publication of LCSPR Child Q by the City of London and Hackney Safeguarding Children Partnership (in relation to the strip search of a female child at school by police), Kent Police provided the Executive with assurance around the number, circumstances and overview arrangements in place for strip searches. The MSCP has been assured that all searches are undertaken in accordance with the codes of practice and Working Together (2018) guidance and that steps have been taken to ensure that the data is reviewed regularly.

MSCP Training

One of the most immediate ways in which the MSCP influences the effectiveness of safeguarding in Medway is through running a range of multi agency safeguarding training sessions for professionals including courses on basic and intermediate child protection, neglect, domestic abuse and Prevent. These have included half and full day training courses as well as shorter specialist workshops, usually 2 hours and online training.

Following the review of our training booking system and in collaboration with KSCMP we extended the existing platform with Me Learning hosting all our E-learning to expand and offer digital bookings for our virtual and face-to-face courses. The transition from the original Me Learning platform to the upgraded platform took place over the summer of 2022. The new platform has 12,510 users across Kent and Medway.

During the year several courses resumed a face-to-face format and one new course, working with men and fathers was developed. Between April 2022 and March 2023, 362 delegates attended one of 25 face to face training sessions. In addition, a number of virtual training courses were attended by 427 delegates. This means 789 delegates attended training during the year. This is significantly higher than the attendance in previous years where 500 delegates attended.

An additional 378 delegates attended MSCP conferences during the year.

Conference Training Session	Attendance
Working with adolescents with complex health care needs (virtual)	119
Medway Domestic Abuse Forum and The Ripple Effect (face to face)	129
Neglect Conference: Stopping Neglect (face to face)	130

Total	378

The MSCP continues to work in conjunction with Kent Safeguarding Children Multi-Agency Partnership (KSCMP) to commission a suite of e-learning programmes. Currently there are 63 e-learning training programmes available. The e-Learning continues to be a well utilised resource. During the year 3,249 e-learning courses were completed by Medway delegates.

Consistently delegates self assess that there has been an increase in at least 2 learning points during the training session, in some cases more. A Training evaluation impact survey was sent out to delegates in February 2023 to those who had attended any training courses between September – December 2022. 7 responses were received and 200 delegates were approached, a very low response rate. 100% of those who responded rated they were 'extremely confident' in recognising a safeguarding concern. 85% rated they were 'extremely confident' in evidencing a concern. 100% reported there were 'no barriers' to taking safeguarding action.

What difference has this made?

From the 7 responses to the training impact survey, 3 delegates went on to explore concerns that the training raised through supervision, 2 shared their learning with colleagues, 1 reported increased safeguarding knowledge and 1 delegate reported being a lead in their agency for a particular area of safeguarding following the training.

Some of the feedback from training is below:

"...Make sure I am vigilant when visiting homes. A clearer understanding of the possible effects of trauma..."

"...This will help me be more careful in detecting abuse..."

"...It will help me be more vigilant and help in my future work..."

Child Deaths

The objective of the child death review process is to learn lessons and apply the learning to help prevent future deaths. Medway's Child Death Overview Panel was established in April 2008 and the new Kent and Medway child death arrangements were published in June 2019. In line with statutory guidance, it reviews every child death in Medway. The purpose is to identify trends and any matters of concern, where remedial action could be taken in similar situations to positively influence outcomes for children and young people.

Across Medway there were 22 deaths reported to the ECDOP system in 2022-2023. Of these, 17 of the children usually resident in Medway died in hospital, 1 child died abroad, 3 children died at home and 1 child died in a hospice

setting. 11 of these deaths presented as neonatal or preterm deaths, 1 child was LeDeR, 1 child was a sudden unexplained death in childhood and 1 child was a suicide. The remaining deaths were classified as general.

Reporting of Medway deaths through the ECDOP system continues to be effective. Information is disseminated quickly to partners and the Child Death Review process in place in Medway is in line with national guidance. However, during 2022-2023 there was a backlog of open cases awaiting closure. Due to the legacy impact of the Covid-19 pandemic the final stage of the process had not been routinely achieved. Multi agency Kent and Medway Child Death Overview Panel (CDOP) meetings that complete the review of a case did not start taking place until June 2022. Meetings are now conducted remotely and some cases that were identified as appropriate were reviewed remotely and closed by way of virtual closure. Meetings are chaired between Kent and Medway. There are monthly CDOP meetings chaired by Kent and meetings chaired by Medway Public health every other month. Both meetings consider a mixture of Kent and Medway Cases.

During the period of 1st April 2022 to 31st March 2023 the Child Death Overview Panel closed 255 cases in total, 34 cases were Medway Children.

At the end of March 2023 there were 7 outstanding Medway cases due for review, 1 from 2021-2022 and 6 from 2022-2023.

Some cases may not be reviewed in the year of death where not all the relevant information is available to CDOP. The CDOP aims to review cases as soon as possible, however other processes for example post mortems, and Local Children Safeguarding Practice Reviews, or other reviews delay cases being heard at CDOP. Action has been taken to address the backlog and the numbers are now consistently within normative range, ongoing progress will be monitored by the MSCP Executive.

Section Six – MSCP Budget

6.1 A summary of the accounts for MSCP for 2022-23:

MSCP Budget 2022-23

MSCP Income from Partner Agency Contributions 2022/23 (Outturn)

Kent & Medway NHS & Social Care Partnership	2.78%	(6,764)
NELFT	2.78%	(6,764)
Medway Community Healthcare	2.78%	(6,764)
NHS Kent and Medway	2.78%	(6,764)
Kent Police and Crime Commissioner	6.33%	(15,434)
National Probation Service	2.15%	(5,235)
HMYOI Cookham Wood	2.86%	(6,996)
Kent Fire & Rescue	1.15%	(2,833)
Medway NHS Foundation Trust	2.78%	(6,764)
Medway Council	73.61%	(179,429)
Other Income – Training	N/A	(455)
Contribution/Drawdown of Reserve	N/A	0
Total Income		(244,202)

MSCP Expenditure 2022/23 (Outturn)

Expenditure	Amount (£s)
Staff (including Independent Scrutineers fee)	189,752
LCSPR and LLR costs (incl Reviewers)	24,148
Other Staffing Costs (including Training)	1,262
E-learning Package	6,800
Kent & Medway Safeguarding Children Procedures (Tri.x)	2,267
Printing, Stationery, general office costs (including computer equipment)	3,207
Meeting and training event costs (including refreshments for events)	125
Travel costs	54
Contribution to Reserves	16,587
Total expenditure	244,202

Appendix One – Glossary

CAMHS	Child and Adolescent Mental Health Service
CCG	Clinical Commissioning Group
CDOP	Child Death Overview Panel
CFAG	Case File Audit Group
CIN	Child in Need
CSC	Children’s Social Care
CSE	Child Sexual Exploitation
DANS	Domestic Abuse Notifications
DfE	Department for Education
DHR	Domestic Homicide Review
EHA	Early Help Assessment
FGM	Female Genital Mutilation
GCP2	Graded Care Profile 2
HMYOI	His Majesty’s Young Offender Institution
ICB	Integrated Care Board
KMDASG	Kent and Medway Domestic Abuse Strategy Group
KSCMP	Kent Safeguarding Children Multi Agency Partnership
IRO	Independent Reviewing Officer
JTAI	Joint Targeted Area Inspection
LAC	Looked After Child
LADO	Local Authority Designated Officer
LGA	Local Government Association
LLR	Learning Lessons Review
LSCP	Local Safeguarding Children Partnership
LCSPR	Local Child Safeguarding Practice Review
MARAC	Multi Agency Risk Assessment Conference
MASH	Multi Agency Safeguarding Hub
MCH	Medway Community Healthcare
MFT	Medway Foundation Trust
MSCP	Medway Safeguarding Children Partnership
MVA	Medway Voluntary Action
NRM	National Referral Mechanism
ONS	Office for National Statistics
PMQA	Performance Management and Quality Assurance
SAB	Safeguarding Adults Board
SCR	Serious Case Review
STC	Secure Training Centre
UASC	Unaccompanied Asylum Seeking Children
YOT	Youth Offending Team

Appendix Two – Relevant Agencies

Relevant agencies are those organisations and agencies whose involvement the safeguarding partners consider is required to safeguard and promote the welfare of local children. The relevant agencies for Medway have been chosen as organisations and agencies that can work in a collaborative way to provide targeted support to children and families as appropriate. The Safeguarding Partners will regularly review the list of relevant agencies. The list of relevant agencies and how they will be engaged in the MSCP is set out below:

Agency	How they will be involved?
Probation	
Probation Service	Leadership Group; Sub Groups
Health	
Kent and Medway Partnership Trust (KMPT)	Leadership Group; Sub Groups
NHS England	Leadership Group; Sub Groups
Medway NHS Foundation Trust	Leadership Group; Sub Groups
NELFT	Leadership Group; Sub Groups
Kent Community Health NHS Foundation Trust (KCHT)	Leadership Group; Sub Groups
Medway Community Healthcare (MCH)	Leadership Group; Sub Groups
Open Road	Leadership Group; Sub Groups
Turning Point	Leadership Group; Sub Groups
Education	
Medway Primary Schools	Executive; Leadership Group; Engagement through Medway Educational Leaders Association (MELA)
Medway Secondary Schools	Executive; Leadership Group; Engagement through Medway Secondary Heads Association (MSHA)
Mid Kent College	Leadership Group
Medway Independent Schools	Leadership Group
Early Years Providers	Leadership Group
Secure Estate	
HMYOI Cookham Wood	Leadership Group; Sub Groups; Secure Estate Sub Group
Voluntary Sector	
Medway Voluntary Action (MVA)	Leadership Group; Sub Groups
MY Trust	Leadership Group; Sub Groups
NSPCC	Leadership Group; Sub Groups
Other Agencies	
Medway Youth Offending Team (YOT)	Leadership Group; Sub Groups
Medway Council - Public Health	Leadership Group; Sub Groups
Kent Fire and Rescue Service	Leadership Group; Sub Groups
CAFCASS	Leadership Group; Sub Groups
British Transport Police	Leadership Group
Housing Providers	Leadership Group
Children's Homes	Leadership Group
Sports Groups/ Associations	Leadership Group
Faith Groups	Leadership Group