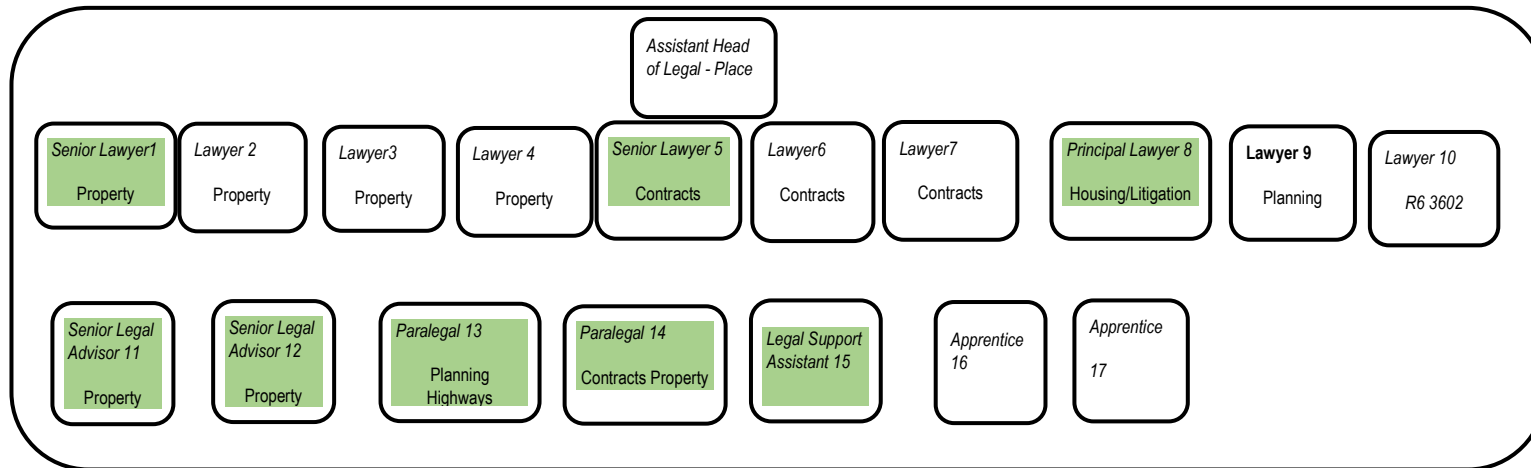


Place team (Current)



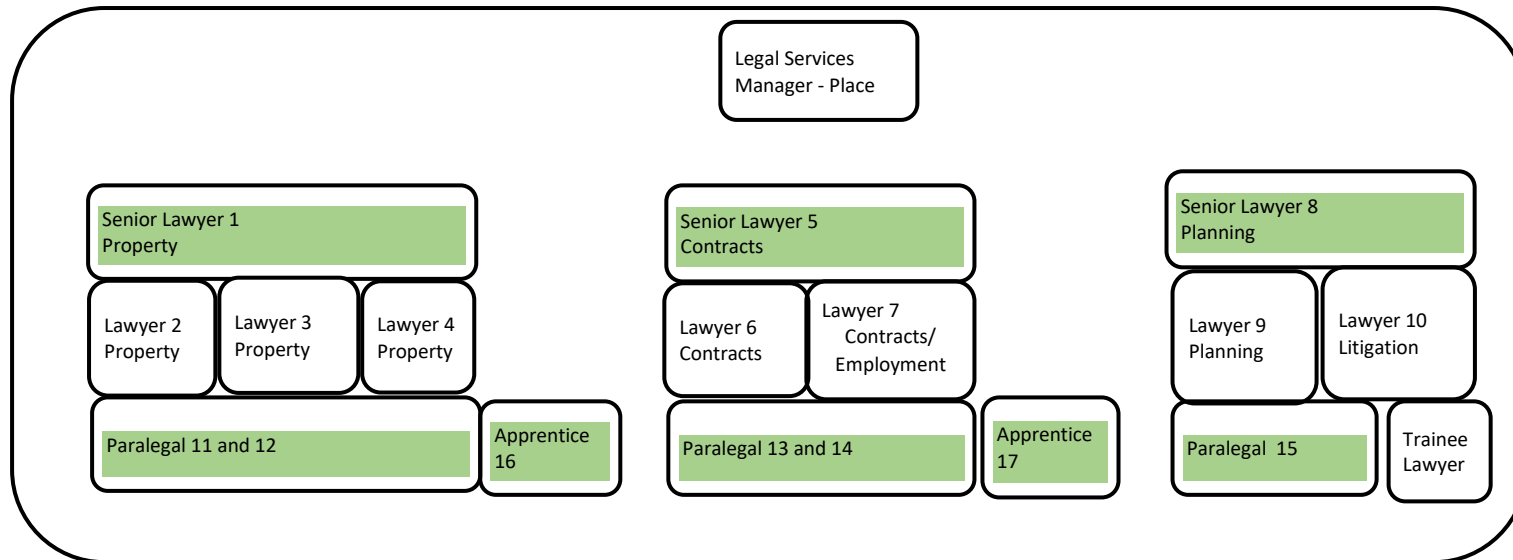
Key

White cells – no change

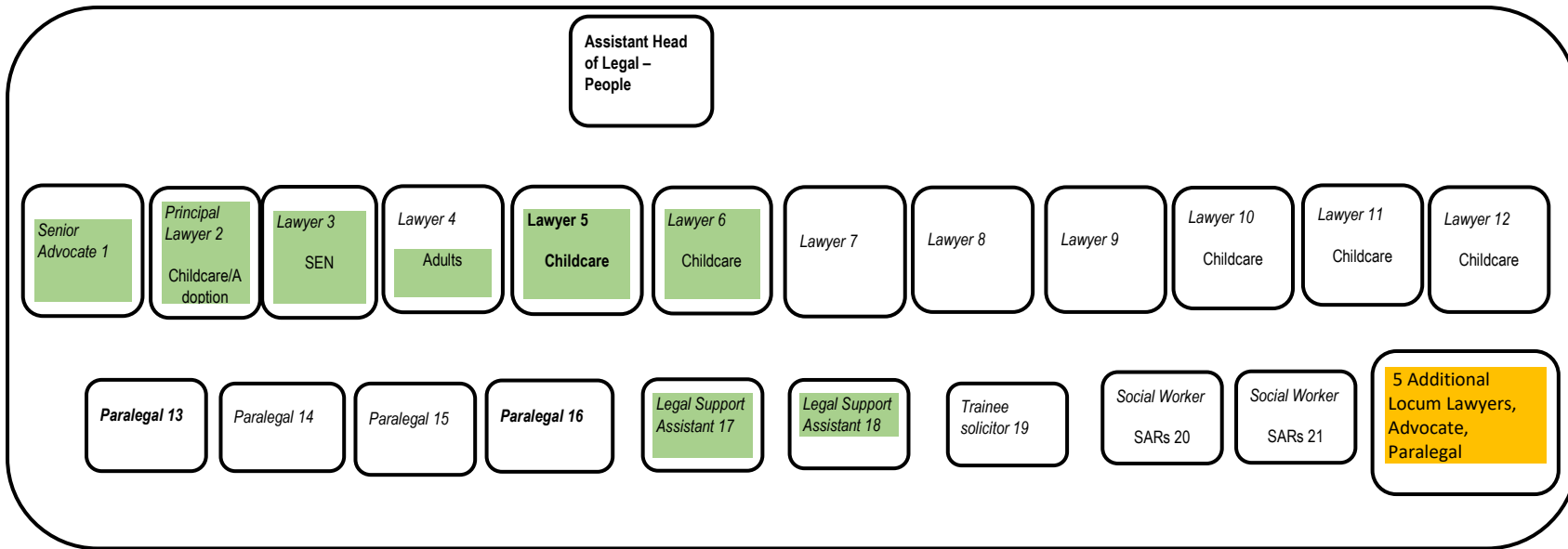
Green cells – new /reconfigured/ new descriptors roles

*the numbers are to simply facilitate tracing to revised restructure

Proposed with new role descriptors



People team Current



Key

White cells – no change

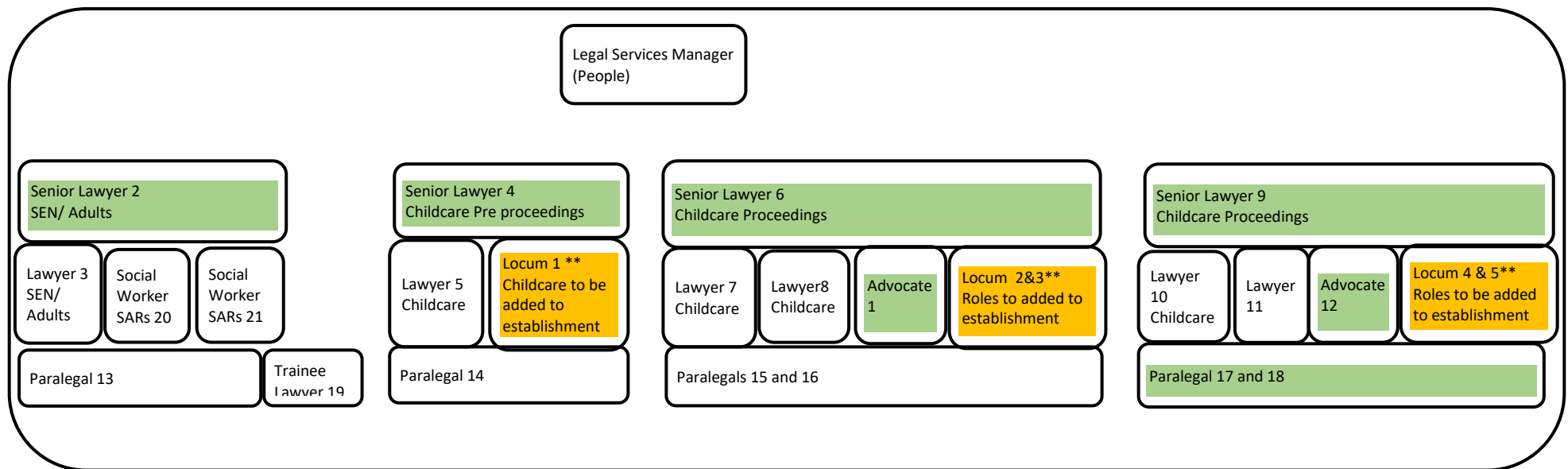
Green cells – existing roles reconfigured roles

Orange – addition to establishment

*the numbers are to simply facilitate tracing to revised restructure

** locums roles to be added to establishment

People team Proposed



Appendix 3

Summary of Proposed Changes to FTEs

Place Team				
Current role	FTEs	Proposal	FTEs	Net FTE change
Assistant Head of Service	1	Redesignate Legal Services Manager	1	0
Principal lawyer	1	Redesignate to Senior Lawyer	1	0
Senior Lawyer	2	Redesignate Senior Lawyer	2	0
Lawyer	7	No change	7	0
Senior Legal Advisor	2	Redesignate as Paralegal	2	0
Paralegal	2	No change	2	0
Legal support Assistant	2	Redesignate as Paralegal	2	0
Trainee	1	Trainee	1	0
Apprentice	2	Apprentice	2	0
Net change				0

People Team				
Current role	FTEs	Proposal	FTEs	Net FTE change
Assistant Head of Service	1	Redesignate Legal Services Manager	1	0
Principal lawyer	1	Redesignate to senior lawyer	1	0
Senior lawyer	0	Redesignate Senior Lawyer	4	+4
Senior Advocate	1	Redesignate Advocate	1	0
Advocate	0	Advocate	1	+1
Lawyer	10	No change	10	0
Paralegal	4	No change	4	0
Legal support Assistant	2	Redesignate as Paralegal	2	0
Trainee	1	Trainee	1	0
Net change				+5