

- LEGEND - EXISTING**
- Oil pipeline and 6m easement
 - Lighting column to be retained
- LEGEND - PROPOSED**
- Asphalt carriageway
 - Traffic island
 - Footway
 - Footway - shared
 - Highway verge with grass, shrubs and trees
 - Tactile blister paving for controlled crossing
 - Tactile blister paving for uncontrolled crossing
 - Kerb
 - Dropped and transition kerbs
 - Splayed Kerb
 - Edging kerb
 - Road marking - white
 - Road marking - aluminium studs to 1055.1 (TBC)
 - Guardrails
 - Bollard - reflective
 - Traffic signal
 - Traffic sign (remain/proposed/relocated)
 - Externally illuminated sign
 - Road name plate (remain/proposed/relocated)
 - Lighting column
 - Lighting column with integrated belisha beacon
 - Overhead LV cables

- NOTES**
1. All dimensions are in metres unless otherwise specified.
 2. Do not scale from this drawing.
 3. Background survey information supplied by SDS surveys (dated Jun 2019 - Aug 2021), Greenhatch Group (Jul 2020), JLP Surveys (Mar 2016). For full survey details see original survey drawings.
 4. For sheet layout see dwg 006804-PCL-HGN-ZZ-DR-WM-0004
 5. For Lighting details see dwg 006804-PCL-HLG-P2-DR-WM
 6. For Traffic sign details see dwg 006804-PCL-HSN-P3-DR-WM

PROPOSED LIGHTING COLUMN SHOWING FOR TIE IN PURPOSES ONLY. REFER TO PHASE 2 LIGHTING PACKAGE FOR MORE DETAILS.

Existing ADS sign face to be replaced. Location to be retained.

Existing ADS sign face to be replaced. Location to be retained.

PROPOSED LIGHTING COLUMN SHOWING FOR TIE IN PURPOSES ONLY. REFER TO PHASE 2 LIGHTING PACKAGE FOR MORE DETAILS.

Phase extents - For continuation see Phase 2 drawings

For continuation see drawing 006804-PCL-HGN-P3-DR-WM-0002

Rev	Date	Description	Drn	Chk	App
P01	07/04/2022	DESIGN FREEZE 1	NB	KL	AZ

This drawing has been specifically prepared to meet the requirements of the named client and may contain design and innovative features which differ from conventional design standards.

PROJECT CENTRE

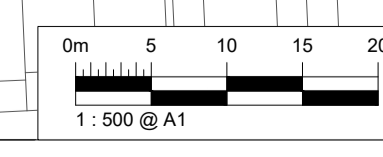
www.marstonholdings.co.uk/projectcentre

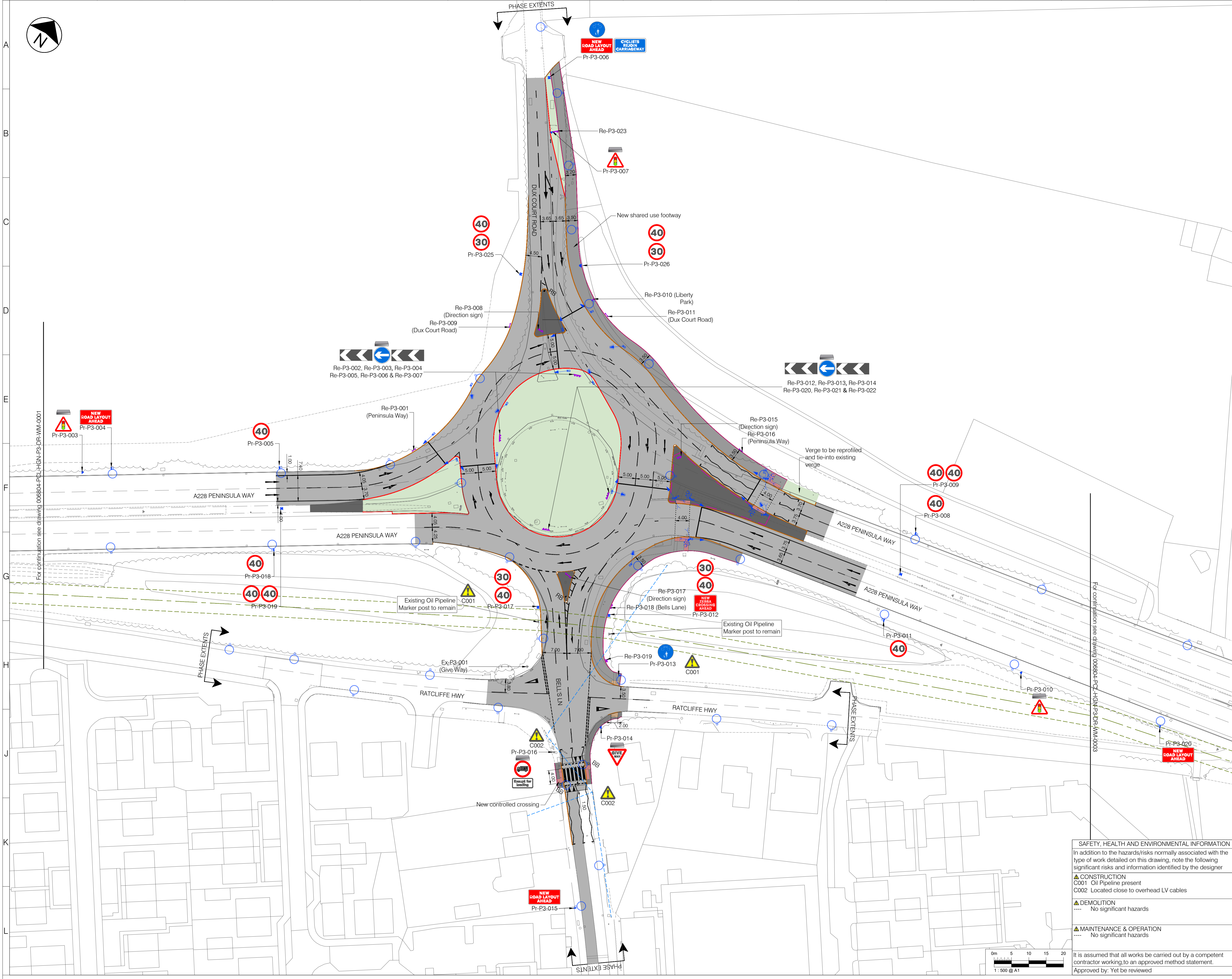
Client					
Project	MEDWAY HIF HOO PENINSULA PHASE 3 - BELL'S LANE ROUNDABOUT				
Drawing Title	GENERAL ARRANGEMENT SHEET 1 OF 5				
Drawing Status	S3 FOR REVIEW AND COMMENT				
Drawn	Designed	Date	Scale	Size	
NB	IG	APR 2022	1:500	A1	
Drawing No.	006804-PCL-HGN-P3-DR-WM-0001				Rev
					P01

SAFETY, HEALTH AND ENVIRONMENTAL INFORMATION
In addition to the hazards/risks normally associated with the type of work detailed on this drawing, note the following significant risks and information identified by the designer

- CONSTRUCTION**
C001 Oil Pipeline present
- DEMOLITION**
---- No significant hazards
- MAINTENANCE & OPERATION**
---- No significant hazards

It is assumed that all works be carried out by a competent contractor working to an approved method statement.
Approved by: Yet to be reviewed





LEGEND - EXISTING

- Oil pipeline and 6m easement
- Lighting column to be retained

LEGEND - PROPOSED

- Asphalt carriageway
- Traffic island
- Footway
- Footway - shared
- Highway verge with grass, shrubs and trees
- Tactile blister paving for controlled crossing
- Tactile blister paving for uncontrolled crossing
- Kerb
- Dropped and transition kerbs
- Splayed Kerb
- Edging kerb
- Road marking - white
- Road marking - aluminium studs to 1055.1 (TBC)
- Guardrails
- RB Bollard - reflective
- Traffic signal
- Traffic sign (remain/proposed/relocated)
- Externally illuminated sign
- Road name plate (remain/proposed/relocated)
- Lighting column
- Lighting column with integrated belisha beacon
- Overhead LV cables

- NOTES**
- All dimensions are in metres unless otherwise specified.
 - Do not scale from this drawing.
 - Background survey information supplied by SDS surveys (dated Jun 2019 - Aug 2021), Greenhatch Group (Jul 2020), JLP Surveys (Mar 2016). For full survey details see original survey drawings.
 - For sheet layout see dwg 006804-PCL-HGN-ZZ-DR-WM-0004
 - For Lighting details see dwg 006804-PCL-HLG-P2-DR-WM
 - For Traffic sign details see dwg 006804-PCL-HSN-P3-DR-WM

Rev	Date	Description	Drn	Chk	App
P01	07/04/2022	DESIGN FREEZE 1	NB	KL	AZ

This drawing has been specifically prepared to meet the requirements of the named client and may contain design and innovative features which differ from conventional design standards.

PROJECT CENTRE
www.marstonholdings.co.uk/projectcentre

Client: **Medway Council**

Project: **MEDWAY
HIF HOO PENINSULA
PHASE 3 - BELLS LANE ROUNDABOUT**

Drawing Title: **GENERAL ARRANGEMENT
SHEET 2 OF 5**

Drawing Status: **S3 FOR REVIEW AND COMMENT**

Drawn	Designed	Date	Scale	Size
NB	IG	APR 2022	1:500	A1

Drawing No: 006804-PCL-HGN-P3-DR-WM-0002
Rev: P01

SAFETY, HEALTH AND ENVIRONMENTAL INFORMATION

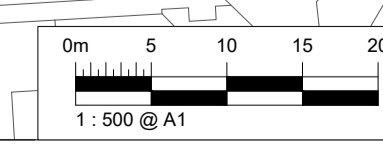
In addition to the hazards/risks normally associated with the type of work detailed on this drawing, note the following significant risks and information identified by the designer

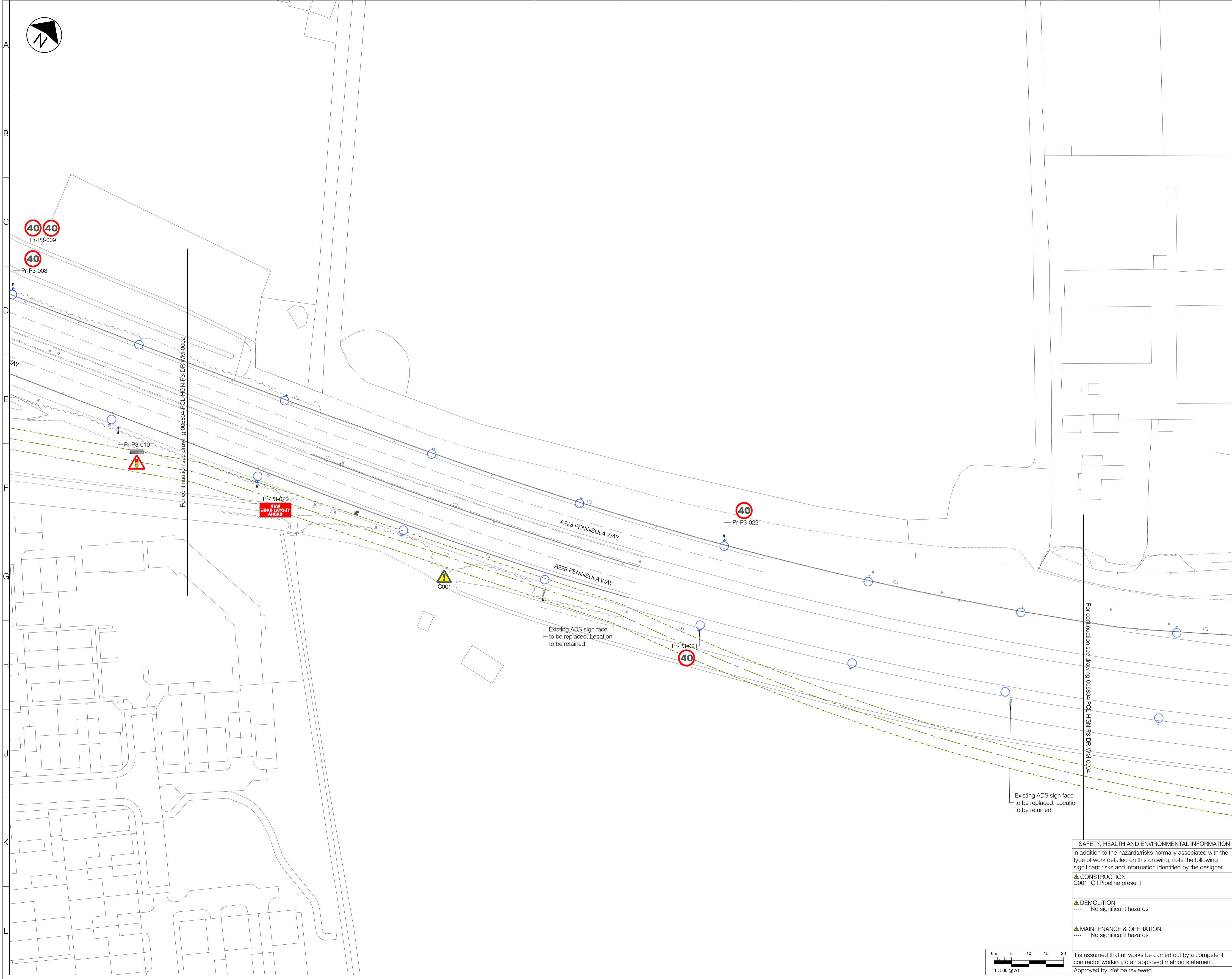
▲ CONSTRUCTION
C001 Oil Pipeline present
C002 Located close to overhead LV cables

▲ DEMOLITION
--- No significant hazards

▲ MAINTENANCE & OPERATION
--- No significant hazards

It is assumed that all works be carried out by a competent contractor working to an approved method statement.
Approved by: Yet to be reviewed





- LEGEND - EXISTING**
- Oil pipeline and 6m easement
 - Lighting column to be retained
- LEGEND - PROPOSED**
- Asphalt carriageway
 - Traffic island
 - Footway
 - Footway - shared
 - Highway verge with grass, shrubs and trees
 - Tactile blister paving for controlled crossing
 - Tactile blister paving for uncontrolled crossing
 - Kerb
 - Dropped and transition kerbs
 - Splayed Kerb
 - Edging kerb
 - Road marking - white
 - Road marking - aluminium studs to 1055.1 (TBC)
 - Guardrails
 - RB Bollard - reflective
 - Traffic signal
 - Traffic sign (remain/proposed/relocated)
 - Externally illuminated sign
 - Road name plate (remain/proposed/relocated)
 - Lighting column
 - Lighting column with integrated belisha beacon
 - Overhead LV cables

- NOTES**
- All dimensions are in metres unless otherwise specified.
 - Do not scale from this drawing.
 - Background survey information supplied by SDS surveys (dated Jun 2019 - Aug 2021), Greenhatch Group (Jul 2020), JLP Surveys (Mar 2016). For full survey details see original survey drawings.
 - For sheet layout see dwg 006804-PCL-HGN-ZZ-DR-WM-0004
 - For Lighting details see dwg 006804-PCL-HLG-P2-DR-WM
 - For Traffic sign details see dwg 006804-PCL-HSN-P3-DR-WM

Rev	Date	Description	Drn	Chk	App
P01	07/04/2022	DESIGN FREEZE 1	NB	KL	AZ

This drawing has been specifically prepared to meet the requirements of the named client and may contain design and innovative features which differ from conventional design standards.



Client: **Medway Council**

Project: **MEDWAY HIF HOO PENINSULA PHASE 3 - BELL'S LANE ROUNDABOUT**

Drawing Title: **GENERAL ARRANGEMENT SHEET 3 OF 5**

Drawing Status: **S3 FOR REVIEW AND COMMENT**

Drawn	Designed	Date	Scale	Size
NB	IG	APR 2022	1:500	A1

Drawing No: 006804-PCL-HGN-P3-DR-WM-0003 Rev: P01

SAFETY, HEALTH AND ENVIRONMENTAL INFORMATION

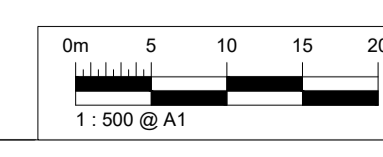
In addition to the hazards/risks normally associated with the type of work detailed on this drawing, note the following significant risks and information identified by the designer

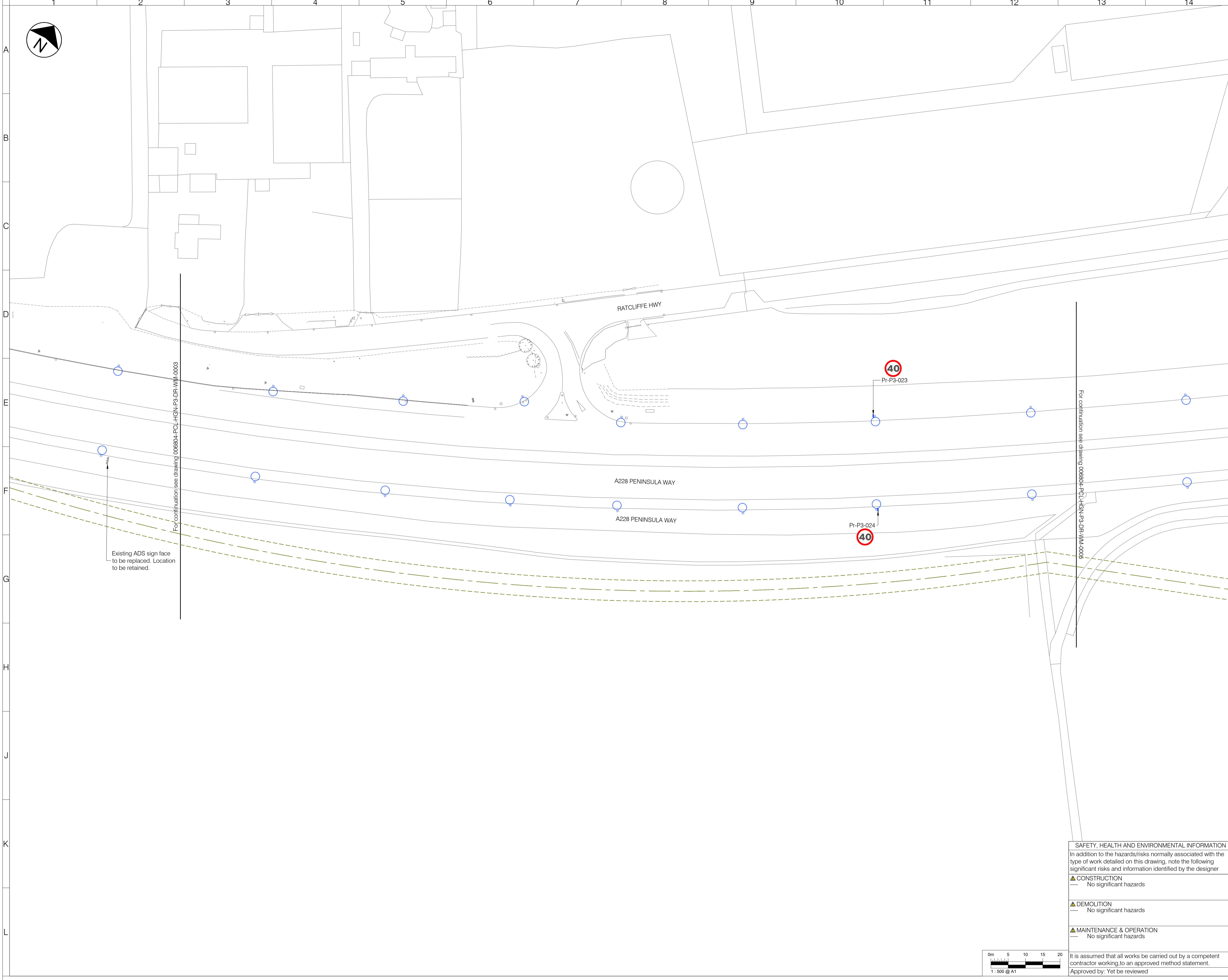
▲ CONSTRUCTION
C001 Oil Pipeline present

▲ DEMOLITION
---- No significant hazards

▲ MAINTENANCE & OPERATION
---- No significant hazards

It is assumed that all works be carried out by a competent contractor working to an approved method statement.
Approved by: Yet to be reviewed





- NOTES**
- All dimensions are in metres unless otherwise specified.
 - Do not scale from this drawing.
 - Background survey information supplied by SDS surveys (dated Jun 2019 - Aug 2021), Greenhatch Group (Jul 2020), JLP Surveys (Mar 2016). For full survey details see original survey drawings.
 - For sheet layout see dwg 006804-PCL-HGN-ZZ-DR-WM-0004
 - For Lighting details see dwg 006804-PCL-HLG-P2-DR-WM
 - For Traffic sign details see dwg 006804-PCL-HSN-P3-DR-WM

Rev	Date	Description	Drn	Chk	App
P01	07/04/2022	DESIGN FREEZE 1	NB	KL	AZ

This drawing has been specifically prepared to meet the requirements of the named client and may contain design and innovative features which differ from conventional design standards.



Client
MEDWAY
HIF HOO PENINSULA
PHASE 3 - BELL'S LANE ROUNDABOUT

Drawing Title
GENERAL ARRANGEMENT
SHEET 4 OF 5

Drawing Status
S3 FOR REVIEW AND COMMENT

Drawn	Designed	Date	Scale	Size
NB	IG	APR 2022	1:500	A1

Drawing No. 006804-PCL-HGN-P3-DR-WM-0004
Rev P01

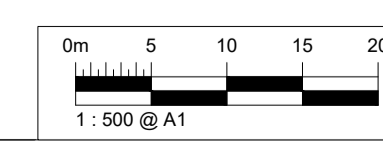
SAFETY, HEALTH AND ENVIRONMENTAL INFORMATION
In addition to the hazards/risks normally associated with the type of work detailed on this drawing, note the following significant risks and information identified by the designer

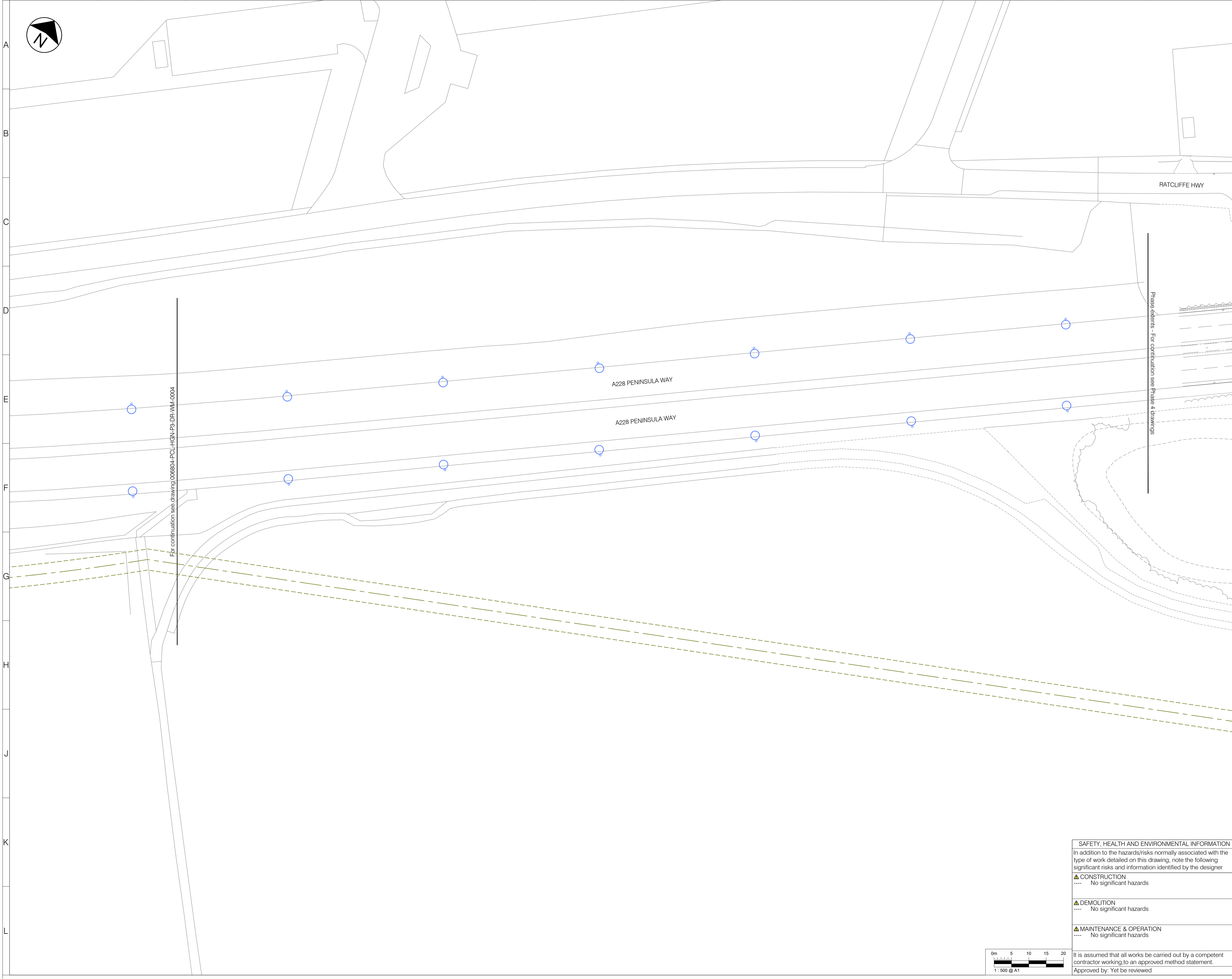
▲ CONSTRUCTION
---- No significant hazards

▲ DEMOLITION
---- No significant hazards

▲ MAINTENANCE & OPERATION
---- No significant hazards

It is assumed that all works be carried out by a competent contractor working to an approved method statement.
Approved by: Yet to be reviewed





- LEGEND - EXISTING**
- Oil pipeline and 6m easement
 - Lighting column to be retained
- LEGEND - PROPOSED**
- Asphalt carriageway
 - Traffic island
 - Footway
 - Footway - shared
 - Highway verge with grass, shrubs and trees
 - Tactile blister paving for controlled crossing
 - Tactile blister paving for uncontrolled crossing
 - Kerb
 - Dropped and transition kerbs
 - Splayed Kerb
 - Edging kerb
 - Road marking - white
 - Road marking - aluminium studs to 1055.1 (TBC)
 - Guardrails
 - RB Bollard - reflective
 - Traffic sign
 - Traffic sign (remain/proposed/relocated)
 - Externally illuminated sign
 - Road name plate (remain/proposed/relocated)
 - Lighting column
 - Lighting column with integrated belisha beacon
 - Overhead LV cables

- NOTES**
- All dimensions are in metres unless otherwise specified.
 - Do not scale from this drawing.
 - Background survey information supplied by SDS surveys (dated Jun 2019 - Aug 2021), Greenhatch Group (Jul 2020), JLP Surveys (Mar 2016). For full survey details see original survey drawings.
 - For sheet layout see dwg 006804-PCL-HGN-ZZ-DR-WM-0004
 - For Lighting details see dwg 006804-PCL-HLG-P2-DR-WM
 - For Traffic sign details see dwg 006804-PCL-HSN-P3-DR-WM

For continuation see drawing 006804-PCL-HGN-P3-DR-WM-0004

Phase extents - For continuation see Phase 4 drawings

Rev	Date	Description	Drn	Chk	App
P01	07/04/2022	DESIGN FREEZE 1		NB	KL AZ

This drawing has been specifically prepared to meet the requirements of the named client and may contain design and innovative features which differ from conventional design standards.

PROJECT CENTRE

www.marstonholdings.co.uk/projectcentre

Client

Medway
COUNCIL

Project

MEDWAY
HIF HOO PENINSULA
PHASE 3 - BELL'S LANE ROUNDABOUT

Drawing Title

GENERAL ARRANGEMENT
SHEET 5 OF 5

Drawing Status

S3 FOR REVIEW AND COMMENT

Drawn	Designed	Date	Scale	Size
NB	IG	APR 2022	1:500	A1

Drawing No. 006804-PCL-HGN-P3-DR-WM-0005

Rev P01

SAFETY, HEALTH AND ENVIRONMENTAL INFORMATION

In addition to the hazards/risks normally associated with the type of work detailed on this drawing, note the following significant risks and information identified by the designer

▲ CONSTRUCTION
---- No significant hazards

▲ DEMOLITION
---- No significant hazards

▲ MAINTENANCE & OPERATION
---- No significant hazards

It is assumed that all works be carried out by a competent contractor working to an approved method statement.
Approved by: Yet to be reviewed

