

- LEGEND - EXISTING**
- Oil pipeline and 6m easement
 - Lighting column to be retained
- LEGEND - PROPOSED**
- Asphalt carriageway
 - Traffic island
 - Footway
 - Footway - shared
 - Highway verge with grass, shrubs and trees
 - Tactile blister paving for controlled crossing
 - Tactile blister paving for uncontrolled crossing
 - Kerb
 - Dropped and transition kerbs
 - Splayed Kerb
 - Edging kerb
 - Road marking - white
 - Road marking - aluminium studs to 1055.1 (TBC)
 - Guardrails
 - Bollard - reflective
 - Traffic signal
 - Traffic sign (remain/proposed/relocated)
 - Externally illuminated sign
 - Road name plate (remain/proposed/relocated)
 - Lighting column
 - Lighting column with integrated belisha beacon
 - Overhead LV cables

- NOTES**
1. All dimensions are in metres unless otherwise specified.
 2. Do not scale from this drawing.
 3. Background survey information supplied by SDS surveys (dated Jun 2019 - Aug 2021), Greenhatch Group (Jul 2020), JLP Surveys (Mar 2016). For full survey details see original survey drawings.
 4. For sheet layout see dwg 006804-PCL-HGN-ZZ-DR-WM-0004
 5. For Lighting details see dwg 006804-PCL-HLG-P2-DR-WM
 6. For Traffic sign details see dwg 006804-PCL-HSN-P3-DR-WM

PROPOSED LIGHTING COLUMN SHOWING FOR TIE IN PURPOSES ONLY. REFER TO PHASE 2 LIGHTING PACKAGE FOR MORE DETAILS.

Existing ADS sign face to be replaced. Location to be retained.

40
Pr-P3-001

Existing ADS sign face to be replaced. Location to be retained.

40
Pr-P3-002

For continuation see drawing 006804-PCL-HGN-P3-DR-WM-0002
Pr-P3-003

PROPOSED LIGHTING COLUMN SHOWING FOR TIE IN PURPOSES ONLY. REFER TO PHASE 2 LIGHTING PACKAGE FOR MORE DETAILS.

Phase extents - For continuation see Phase 2 drawings

Rev	Date	Description	Drn	Chk	App
P01	07/04/2022	DESIGN FREEZE 1	NB	KL	AZ

This drawing has been specifically prepared to meet the requirements of the named client and may contain design and innovative features which differ from conventional design standards.

PROJECT CENTRE

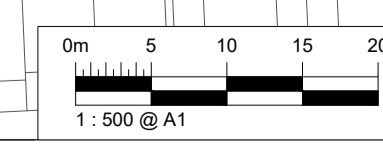
www.marstonholdings.co.uk/projectcentre

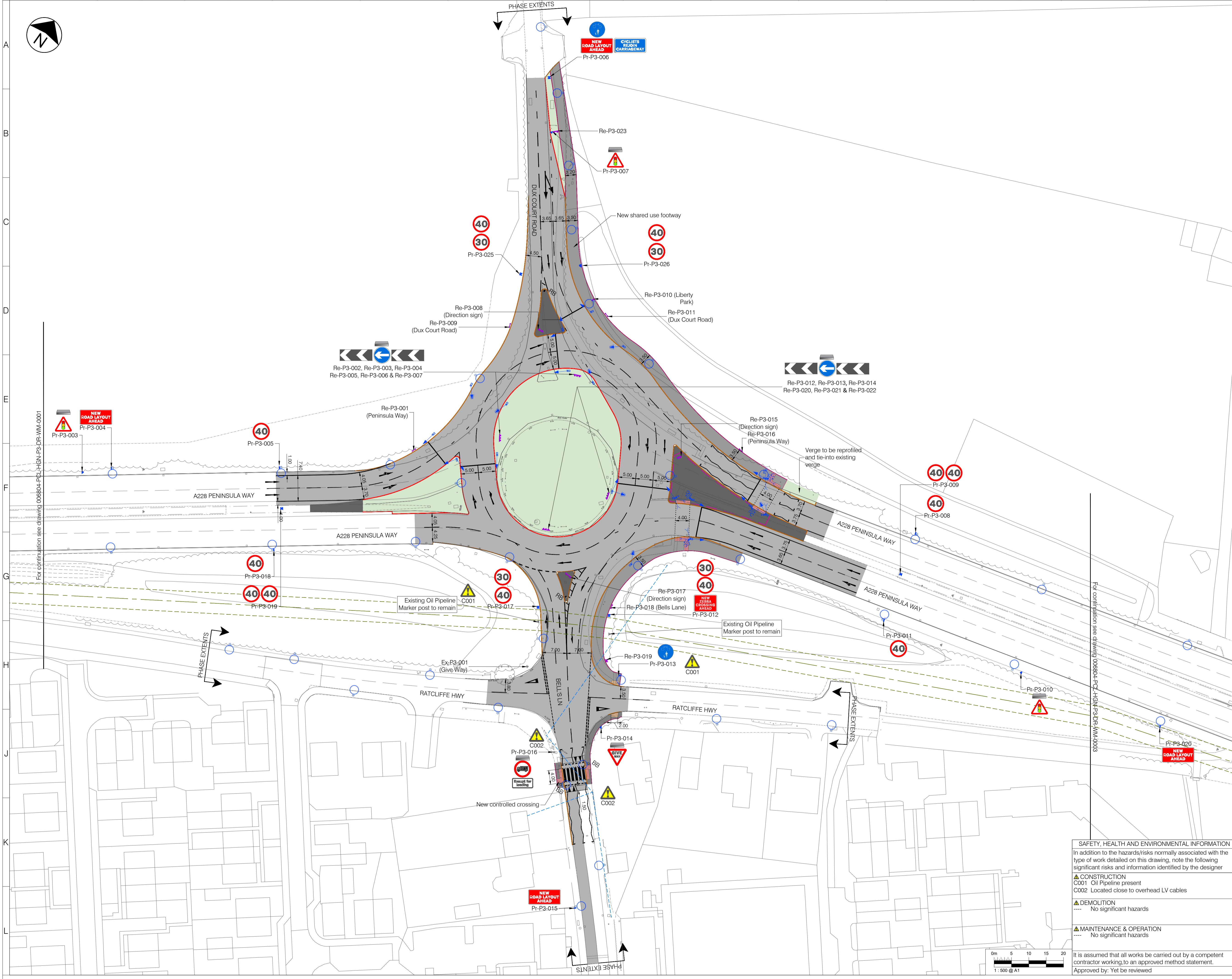
Client				
Project	MEDWAY HIF HOO PENINSULA PHASE 3 - BELL'S LANE ROUNDABOUT			
Drawing Title	GENERAL ARRANGEMENT SHEET 1 OF 5			
Drawing Status	S3 FOR REVIEW AND COMMENT			
Drawn	Designed	Date	Scale	Size
NB	IG	APR 2022	1:500	A1
Drawing No.	Rev			
006804-PCL-HGN-P3-DR-WM-0001				P01

SAFETY, HEALTH AND ENVIRONMENTAL INFORMATION
In addition to the hazards/risks normally associated with the type of work detailed on this drawing, note the following significant risks and information identified by the designer

- CONSTRUCTION**
C001 Oil Pipeline present
- DEMOLITION**
---- No significant hazards
- MAINTENANCE & OPERATION**
---- No significant hazards

It is assumed that all works be carried out by a competent contractor working to an approved method statement.
Approved by: Yet to be reviewed





LEGEND - EXISTING

- Oil pipeline and 6m easement
- Lighting column to be retained

LEGEND - PROPOSED

- Asphalt carriageway
- Traffic island
- Footway
- Footway - shared
- Highway verge with grass, shrubs and trees
- Tactile blister paving for controlled crossing
- Tactile blister paving for uncontrolled crossing
- Kerb
- Dropped and transition kerbs
- Splayed Kerb
- Edging kerb
- Road marking - white
- Road marking - aluminium studs to 1055.1 (TBC)
- Guardrails
- RB Bollard - reflective
- Traffic signal
- Traffic sign (remain/proposed/relocated)
- Externally illuminated sign
- Road name plate (remain/proposed/relocated)
- Lighting column
- Lighting column with integrated belisha beacon
- Overhead LV cables

- NOTES**
- All dimensions are in metres unless otherwise specified.
 - Do not scale from this drawing.
 - Background survey information supplied by SDS surveys (dated Jun 2019 - Aug 2021), Greenhatch Group (Jul 2020), JLP Surveys (Mar 2016). For full survey details see original survey drawings.
 - For sheet layout see dwg 006804-PCL-HGN-ZZ-DR-WM-0004
 - For Lighting details see dwg 006804-PCL-HLG-P2-DR-WM
 - For Traffic sign details see dwg 006804-PCL-HSN-P3-DR-WM

Rev	Date	Description	Drn	Chk	App
P01	07/04/2022	DESIGN FREEZE 1	NB	KL	AZ

This drawing has been specifically prepared to meet the requirements of the named client and may contain design and innovative features which differ from conventional design standards.

PROJECT CENTRE
www.marstonholdings.co.uk/projectcentre

Client: **Medway Council**

Project: **MEDWAY
HIF HOO PENINSULA
PHASE 3 - BELLS LANE ROUNDABOUT**

Drawing Title: **GENERAL ARRANGEMENT
SHEET 2 OF 5**

Drawing Status: **S3 FOR REVIEW AND COMMENT**

Drawn	Designed	Date	Scale	Size
NB	IG	APR 2022	1:500	A1

Drawing No: 006804-PCL-HGN-P3-DR-WM-0002 Rev: P01

SAFETY, HEALTH AND ENVIRONMENTAL INFORMATION

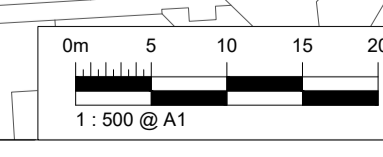
In addition to the hazards/risks normally associated with the type of work detailed on this drawing, note the following significant risks and information identified by the designer

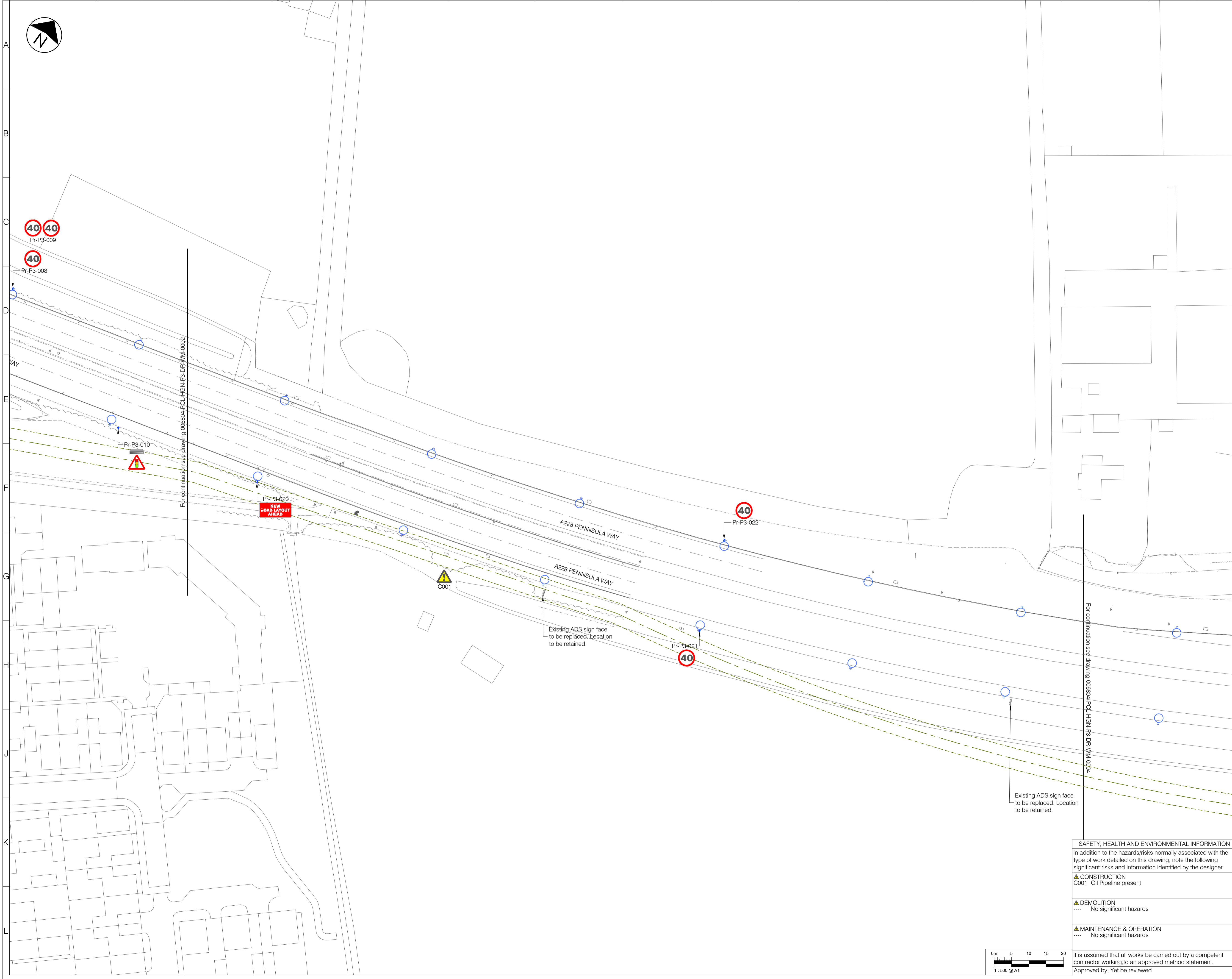
▲ CONSTRUCTION
C001 Oil Pipeline present
C002 Located close to overhead LV cables

▲ DEMOLITION
--- No significant hazards

▲ MAINTENANCE & OPERATION
--- No significant hazards

It is assumed that all works be carried out by a competent contractor working to an approved method statement.
Approved by: Yet to be reviewed





- LEGEND - EXISTING**
- Oil pipeline and 6m easement
 - Lighting column to be retained
- LEGEND - PROPOSED**
- Asphalt carriageway
 - Traffic island
 - Footway
 - Footway - shared
 - Highway verge with grass, shrubs and trees
 - Tactile blister paving for controlled crossing
 - Tactile blister paving for uncontrolled crossing
 - Kerb
 - Dropped and transition kerbs
 - Splayed Kerb
 - Edging kerb
 - Road marking - white
 - Road marking - aluminium studs to 1055.1 (TBC)
 - Guardrails
 - RB Bollard - reflective
 - Traffic signal
 - Traffic sign (remain/proposed/relocated)
 - Externally illuminated sign
 - Road name plate (remain/proposed/relocated)
 - Lighting column
 - Lighting column with integrated belisha beacon
 - Overhead LV cables

- NOTES**
- All dimensions are in metres unless otherwise specified.
 - Do not scale from this drawing.
 - Background survey information supplied by SDS surveys (dated Jun 2019 - Aug 2021), Greenhatch Group (Jul 2020), JLP Surveys (Mar 2016). For full survey details see original survey drawings.
 - For sheet layout see dwg 006804-PCL-HGN-ZZ-DR-WM-0004
 - For Lighting details see dwg 006804-PCL-HLG-P2-DR-WM
 - For Traffic sign details see dwg 006804-PCL-HSN-P3-DR-WM

Rev	Date	Description	Drn	Chk	App
P01	07/04/2022	DESIGN FREEZE 1	NB	KL	AZ

This drawing has been specifically prepared to meet the requirements of the named client and may contain design and innovative features which differ from conventional design standards.



Client: **Medway Council**

Project: **MEDWAY HIF HOO PENINSULA PHASE 3 - BELL'S LANE ROUNDABOUT**

Drawing Title: **GENERAL ARRANGEMENT SHEET 3 OF 5**

Drawing Status: **S3 FOR REVIEW AND COMMENT**

Drawn	Designed	Date	Scale	Size
NB	IG	APR 2022	1:500	A1

Drawing No: 006804-PCL-HGN-P3-DR-WM-0003 Rev: P01

SAFETY, HEALTH AND ENVIRONMENTAL INFORMATION

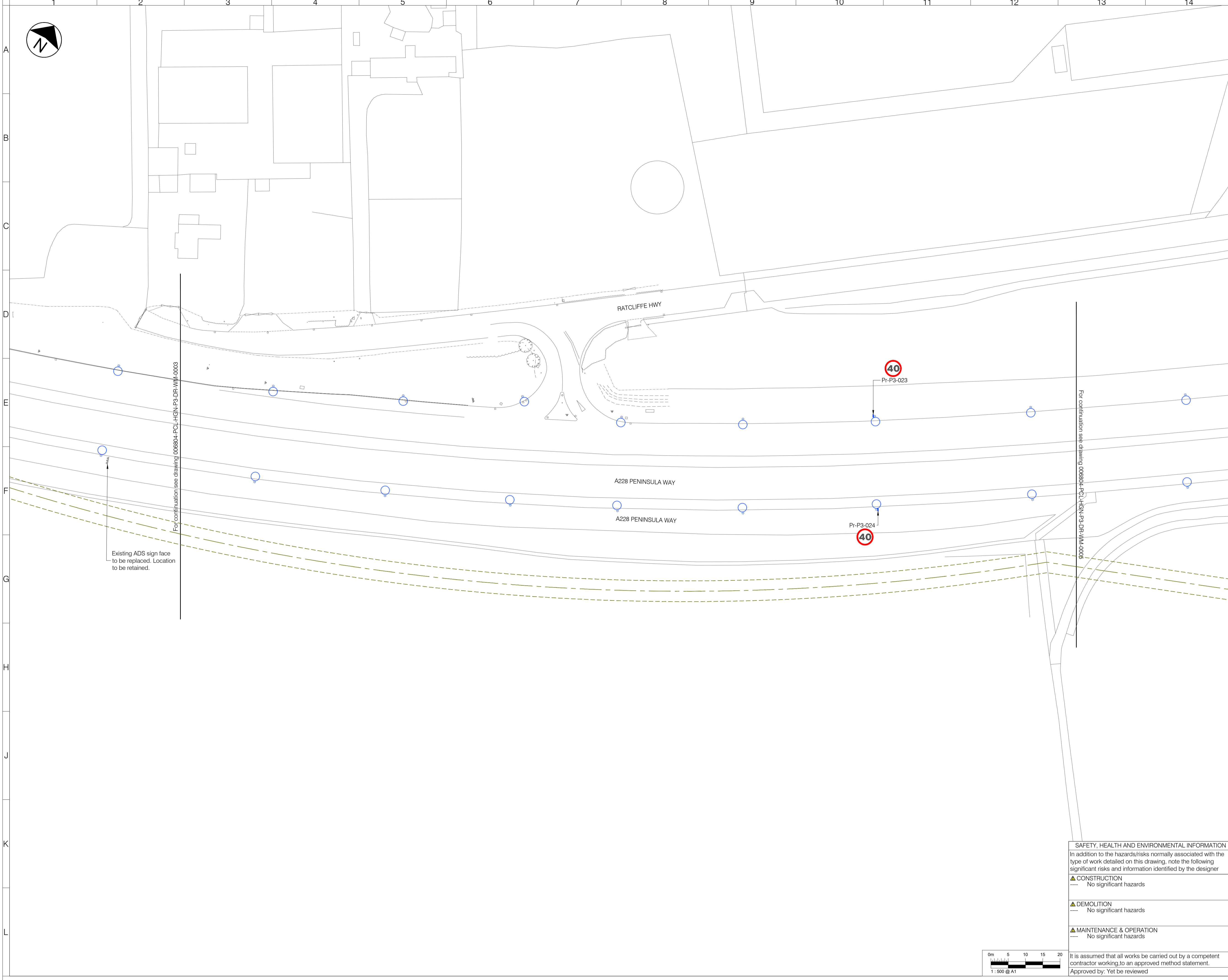
In addition to the hazards/risks normally associated with the type of work detailed on this drawing, note the following significant risks and information identified by the designer

▲ CONSTRUCTION
C001 Oil Pipeline present

▲ DEMOLITION
---- No significant hazards

▲ MAINTENANCE & OPERATION
---- No significant hazards

It is assumed that all works be carried out by a competent contractor working to an approved method statement.
Approved by: Yet to be reviewed



- NOTES**
- All dimensions are in metres unless otherwise specified.
 - Do not scale from this drawing.
 - Background survey information supplied by SDS surveys (dated Jun 2019 - Aug 2021), Greenhatch Group (Jul 2020), JLP Surveys (Mar 2016). For full survey details see original survey drawings.
 - For sheet layout see dwg 006804-PCL-HGN-ZZ-DR-WM-0004
 - For Lighting details see dwg 006804-PCL-HLG-P2-DR-WM
 - For Traffic sign details see dwg 006804-PCL-HSN-P3-DR-WM

Rev	Date	Description	Drn	Chk	App
P01	07/04/2022	DESIGN FREEZE 1	NB	KL	AZ

This drawing has been specifically prepared to meet the requirements of the named client and may contain design and innovative features which differ from conventional design standards.

PROJECT CENTRE

www.marstonholdings.co.uk/projectcentre

Client

Medway
COUNCIL

Project

MEDWAY
HIF HOO PENINSULA
PHASE 3 - BELL'S LANE ROUNDABOUT

Drawing Title

GENERAL ARRANGEMENT
SHEET 4 OF 5

Drawing Status

S3 FOR REVIEW AND COMMENT

Drawn	Designed	Date	Scale	Size
NB	IG	APR 2022	1:500	A1

Drawing No. 006804-PCL-HGN-P3-DR-WM-0004

Rev P01

SAFETY, HEALTH AND ENVIRONMENTAL INFORMATION

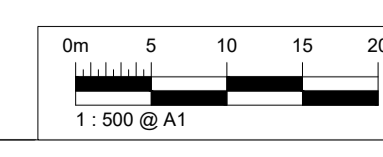
In addition to the hazards/risks normally associated with the type of work detailed on this drawing, note the following significant risks and information identified by the designer

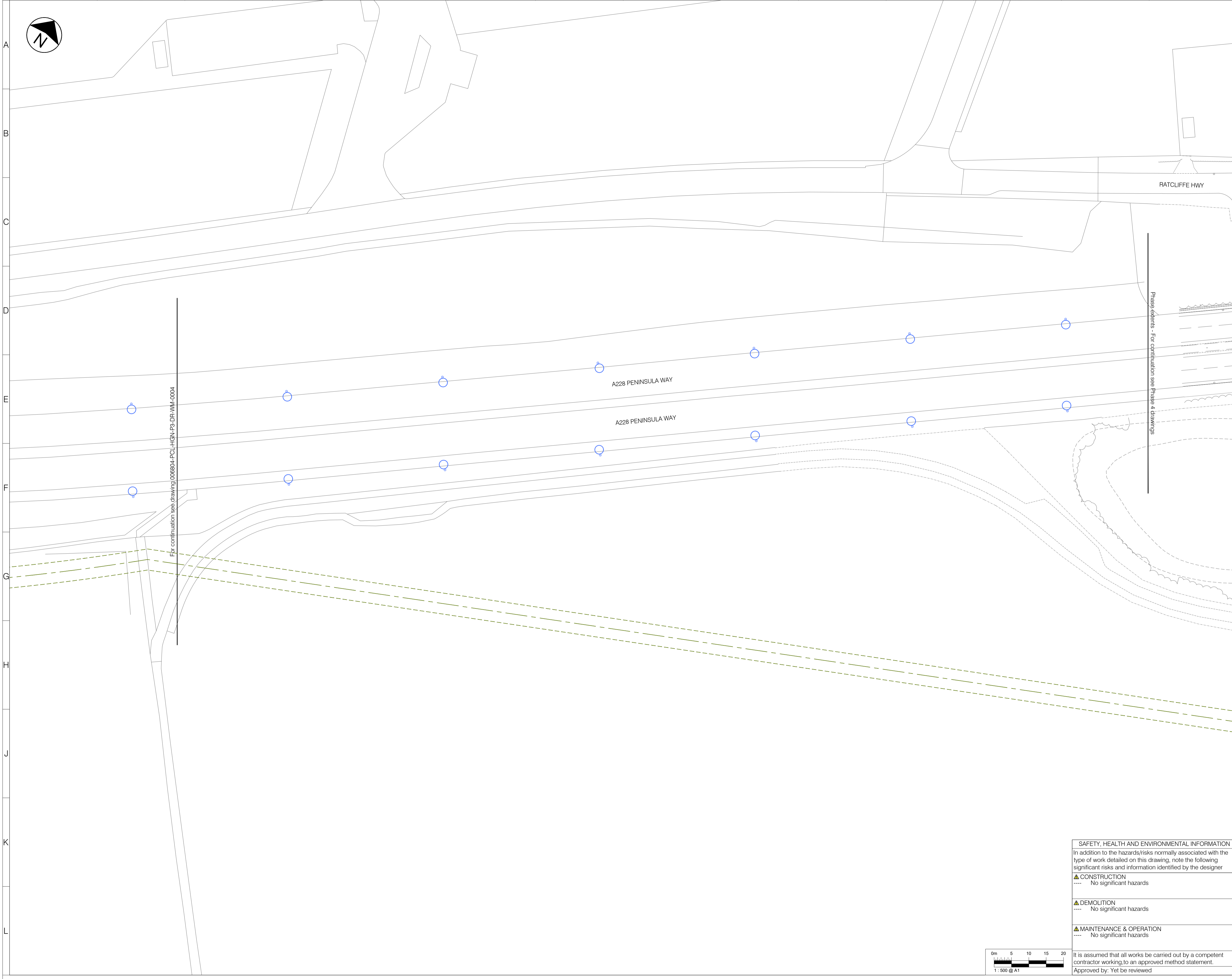
▲ CONSTRUCTION
---- No significant hazards

▲ DEMOLITION
---- No significant hazards

▲ MAINTENANCE & OPERATION
---- No significant hazards

It is assumed that all works be carried out by a competent contractor working to an approved method statement.
Approved by: Yet to be reviewed





- LEGEND - EXISTING**
- Oil pipeline and 6m easement
 - Lighting column to be retained
- LEGEND - PROPOSED**
- Asphalt carriageway
 - Traffic island
 - Footway
 - Footway - shared
 - Highway verge with grass, shrubs and trees
 - Tactile blister paving for controlled crossing
 - Tactile blister paving for uncontrolled crossing
 - Kerb
 - Dropped and transition kerbs
 - Splayed Kerb
 - Edging kerb
 - Road marking - white
 - Road marking - aluminium studs to 1055.1 (TBC)
 - Guardrails
 - RB Bollard - reflective
 - Traffic signal
 - Traffic sign (remain/proposed/relocated)
 - Externally illuminated sign
 - Road name plate (remain/proposed/relocated)
 - Lighting column
 - Lighting column with integrated belisha beacon
 - Overhead LV cables

- NOTES**
1. All dimensions are in metres unless otherwise specified.
 2. Do not scale from this drawing.
 3. Background survey information supplied by SDS surveys (dated Jun 2019 - Aug 2021), Greenhatch Group (Jul 2020), JLP Surveys (Mar 2016). For full survey details see original survey drawings.
 4. For sheet layout see dwg 006804-PCL-HGN-ZZ-DR-WM-0004
 5. For Lighting details see dwg 006804-PCL-HLG-P2-DR-WM
 6. For Traffic sign details see dwg 006804-PCL-HSN-P3-DR-WM

For continuation see drawing 006804-PCL-HGN-P3-DR-WM-0004

Phase extents - For continuation see Phase 4 drawings

Rev	Date	Description	Drn	Chk	App
P01	07/04/2022	DESIGN FREEZE 1		NB	KL AZ

This drawing has been specifically prepared to meet the requirements of the named client and may contain design and innovative features which differ from conventional design standards.

PROJECT CENTRE

www.marstonholdings.co.uk/projectcentre

Client

Project

MEDWAY
HIF HOO PENINSULA
PHASE 3 - BELL'S LANE ROUNDABOUT

Drawing Title

GENERAL ARRANGEMENT
SHEET 5 OF 5

Drawing Status

S3 FOR REVIEW AND COMMENT

Drawn	Designed	Date	Scale	Size
NB	IG	APR 2022	1:500	A1

Drawing No. 006804-PCL-HGN-P3-DR-WM-0005

Rev P01

SAFETY, HEALTH AND ENVIRONMENTAL INFORMATION

In addition to the hazards/risks normally associated with the type of work detailed on this drawing, note the following significant risks and information identified by the designer

▲ CONSTRUCTION
---- No significant hazards

▲ DEMOLITION
---- No significant hazards

▲ MAINTENANCE & OPERATION
---- No significant hazards

It is assumed that all works be carried out by a competent contractor working to an approved method statement.
Approved by: Yet to be reviewed

