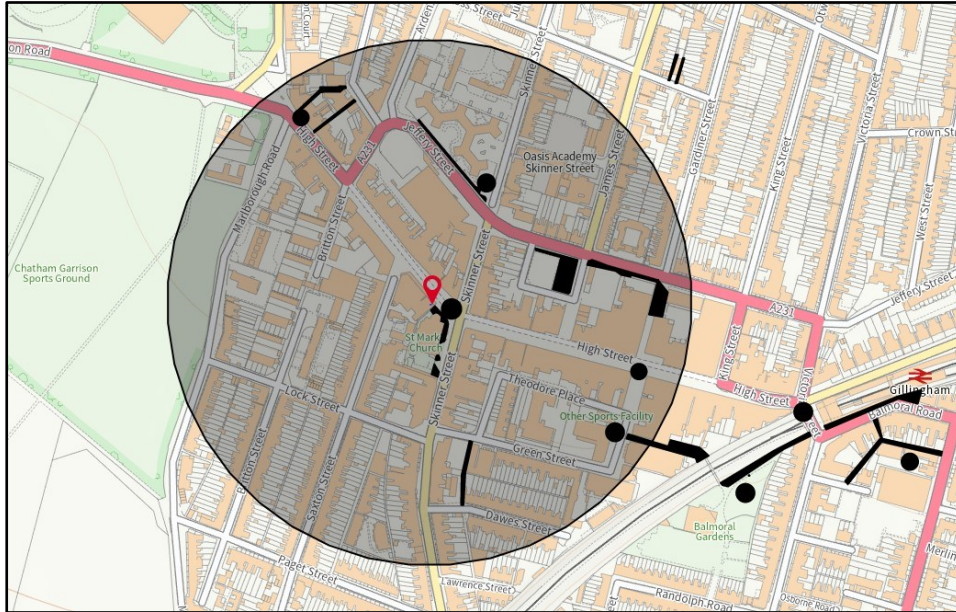


## APPENDIX D

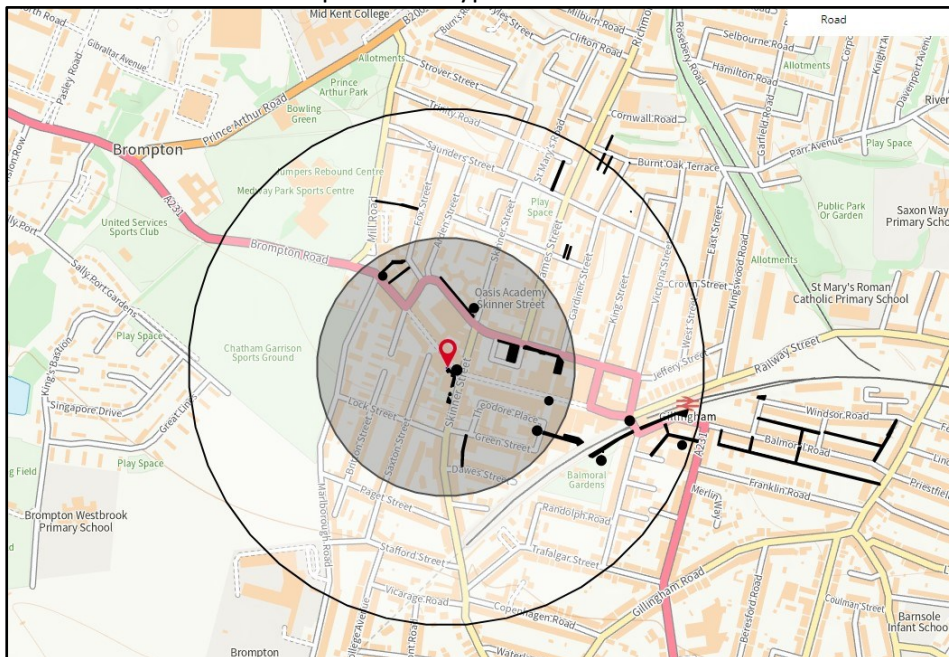
### Annex 1

#### Examples of alcohol related litter in and around the Gillingham CIP area between June 2021 and March 2022.

The map below shows the location of the premises. The circle is a 250 m radius from the premises, or a 2 to 3-minute walk. The areas highlighted in black are where alcohol-related litter, evidence of public urination and defecation and drug paraphernalia have been recorded. The black circles show where public drinking has been observed on several occasions.



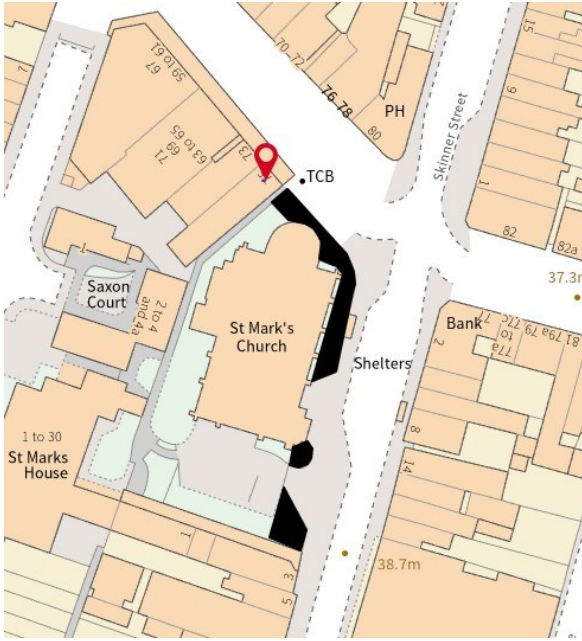
The below map shows an outer circle with a radius of 500 m from the premises, or a 5 to 6 minutes' walk, marking the locations where concentrations of alcohol litter have been found in the wider area to illustrate the how widespread this type of litter is.





## APPENDIX D

St Marks Church area.





## APPENDIX D



Photographs taken in March 2022





## APPENDIX D

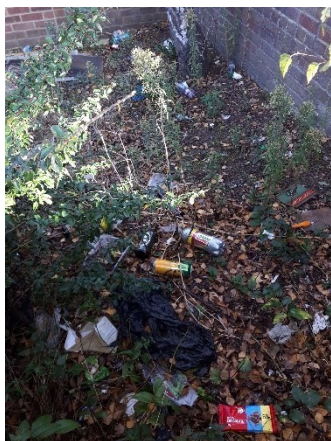


Jeffery Street and Skinner Street

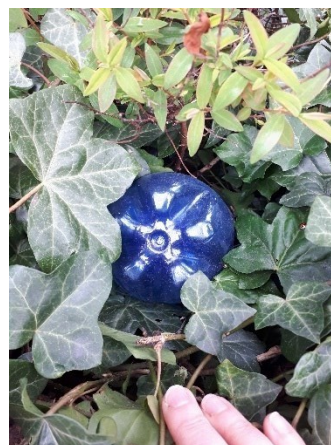




## APPENDIX D



February and March 2022



## APPENDIX D

