



Medway Safeguarding Children Partnership

Annual Report of 2020-21

OCTOBER 2020



	Page
Foreword	3
Key achievements	4
Section One – About Medway Children and Families	6
Section Two – The Partnership	7
Section Three – Independent Scrutineer’s Evaluation	10
Section Four – Evidence of Impact on priorities	13
Section Five – Learning and Improvement	22
Section Six – MSCP Budget	31
Appendices	

Foreword

We are pleased to present the second annual report of the Medway Safeguarding Children Partnership (MSCP) which covers the period April 2020 to March 2021.

The MSCP is committed to safeguarding and promoting the welfare of all children in Medway. We want Medway to be a place where children are safe from harm in their homes, families and communities and we want to ensure the right service is delivered the first time.

Much of the reporting year was dominated by the response to the Covid-19 pandemic and a series of national and local lockdowns. Agencies immediately responded to challenges to ensure that safeguarding children and young people was a key priority during the pandemic. Agencies responded with new working practices, MSCP business continued with the use of virtual meetings and the MSCP played a role in sharing information and resources during the challenging period. Attendance at the Executive and sub group meetings has been good which evidences the commitment from partners.

A summary of the key achievements of the MSCP is on page 4. As we move into 2021-22, the annual report provides an opportunity to reflect on where we need to focus our efforts in the year ahead and to reflect on the achievements in 2020-21.

Key achievements

During 2020-21 the Medway Safeguarding Children Partnership (MSCP) focused on embedding and refining the partnership arrangements whilst responding to the Covid-19 pandemic. Key achievements include:

- The Joint Exploitation Group (JEG) developed a Child Exploitation Assessment tool for practitioners covering both Kent and Medway. The tool helps to improve how Medway disrupts exploitation and will enable agencies to work together to create safety and reduce harm.
- The JEG is updating its quarterly contextual safeguarding report covering both Kent and Medway which informs partners of any patterns and trends covering issues such as emotional well-being, domestic abuse, missing children, county lines and serious youth violence. It has also developed a Contextual Safeguarding Strategy which will be published in 2021-22.
- The MSCP has strengthened links with schools and now has a primary and secondary head teacher representative on the Executive as well as seeing an increase in attendance of schools in MSCP events. Kent Police have also invested in 70 Schools Officers which will further embed multiagency working. The Schools Officers will provide a visible and accessible police presence, working closely with young people, parents and carers, the school and partner agencies to increase safety and identify early safeguarding opportunities.
- The MSCP has completed section 11 audits and held panel sessions with partner agencies which has provided assurance to the MSCP about how agencies are working to safeguard children. This included assurance that agencies have clear lines of accountability and senior management commitment to safeguarding and that staff safeguarding training is kept up to date. Partners felt that there had been good engagement with the MSCP through the Leadership events and sub group meetings which have been helpful in ensuring partners are kept well informed and up to date.
- The Escalation Policy has been reviewed and section 11 audits tell us that the escalation policies are known and utilised and health partners specifically commented that the escalation policy was well embedded and straightforward to use.
- The MSCP converted all training to virtual courses so that the training could continue during the covid-19 pandemic. Between April 2020 and March 2021, the MSCP delivered 29 training sessions attended by 45 delegates. Partners have reflected that the MSCP multi-agency training is highly regarded, valued and trusted.
- The case referral and rapid referral process has been reviewed and we have had assurance from the national child safeguarding practice review panel that our decision making has been correct and that our rapid reviews are comprehensive and identify all the learning.
- The MSCP has specifically focused on the promotion of e-learning packages which has had a positive impact. 11,359 delegates completed

courses during the year, which is more than 15 times the number completing courses in the previous year.

- The MSCP reviewed and launched the Medway Threshold guidance, introducing three levels of need to support a better understanding of thresholds across the partnership. The threshold guidance was launched at an event with over 170 people alongside a video and virtual training. Through the launch and training we want to ensure there is a common language and understanding of children's needs across all agencies, including how and when to access services. We will be working to measure the impact but early evidence suggests that at the front door families are receiving the right service to match their need.
- The MSCP led the development of a multi agency Neglect Strategy which will be published in 2021-22. The MSCP wants to ensure there is more effective multi agency work around the prevention, early recognition and management of neglect to improve the lives of children.
- The MSCP led the development of a multi agency Early Help Strategy which will be published in 2021-22.
- The MSCP has completed an annual review of safeguarding and the use of restraint within HMYOI Cookham Wood and has engaged the new secure school which is due to open in Medway in 2023, in the work of the Secure Estate Quality Assurance Group.

Section One – About Medway Children and Families

Medway is set around the river Medway within the Thames Gateway Growth Area. There are 5 main towns in the area: Chatham, Gillingham, Rochester, Strood and Rainham, as well as significant rural areas.

In June 2020 the Office for National Statistics released the mid-2019 population estimates which indicated that the population of Medway was 278,556. The majority of the population (89.6%) in Medway are classified as White, with the next largest ethnic group being Asian or Asian British (5.2%). This is similar to the England and Kent populations.

Overall, comparing local indicators with England averages, the health and wellbeing of children in Medway is similar to England. Public health interventions can improve child health at a local level. In Medway:

- The infant mortality rate is similar to England with an average of 13 infants dying before age 1 each year.
- The teenage pregnancy rate is similar to England, with 110 girls becoming pregnant in a year. This is an improving picture as historically Medway had a higher than England rate.
- 15.2% of women smoke while pregnant which is worse than England but represents a significant drop from 19% in 2017.
- The MMR immunisation level does not meet recommended coverage (95%). By age 2, 90.9% of children have had one dose.
- Dental health is similar to England. 25.5% of 5 year olds have experience of dental decay.
- The rate of child inpatient admissions for mental health conditions at 69.3 per 100,000 is similar to England. The rate of self-harm (10-24 years) at 365.4 per 100,000 is lower than England.

There were 134 children subject to a child protection plan at the end of March 2021, compared with 463 in April 2020. This equates to 21 children subject to a child protection plan per 10,000 of the child population and is lower than the national average of 42.8 children subject to a child protection plan per 10,000 of the child population. This is lower than Medway's statistical neighbours¹ which is 45.2 children subject to a child protection plan per 10,000 of the child population.

There were 439 Children in Care at the end of March 2020 compared with 426 in March 2020. This equates to 68.3 Children in Care per 10,000 of the under 18 population, and remains below Medway's statistical neighbours at 74 per 10,000.

¹ Statistical neighbour models provide one method of benchmarking progress. Each local authority is grouped with a number of other local authorities that are deemed to have similar characteristics – known as statistical neighbours. Medway's statistical neighbours are: North Lincolnshire; Telford and Wrekin; Dudley; Thurrock; Havering; Northamptonshire; Rotherham; Southend-on-sea; Kent; and Swindon.

Section Two – The Partnership

The MSCP was set up on 2 September 2019 to replace the Local Safeguarding Children Board. These new arrangements were in response to the Children and Social Work Act 2017.

Medway Council, Kent Police and Kent and Medway Clinical Commissioning Group (CCG) are the three safeguarding partners that make up the MSCP.

The purpose of the MSCP is to support and enable local organisations and agencies to work together in a system where:

- Children are safeguarded and their welfare promoted
- Partner organisations and agencies collaborate, share and co-own the vision for how to achieve improved outcomes for vulnerable children
- Organisations and agencies challenge and hold one another to account
- There is early identification and analysis of new safeguarding issues and emerging threats
- Learning is promoted and embedded in a way that local services for children and families can become more reflective and implement changes to practice
- Information is shared to support accurate and timely decision making for children and families.

Relevant Agencies

Relevant agencies are those organisations whose involvement the safeguarding partners consider is required to safeguard and promote the welfare of children in Medway. The MSCP works with relevant agencies through its sub groups and Leadership events. The MSCP wishes to acknowledge the contributions of support from relevant agencies in relation to their engagement and continuation to the sub groups, delivery of training and engagement with multi agency audits and case reviews. A full list of relevant agencies can be found in Appendix Two.

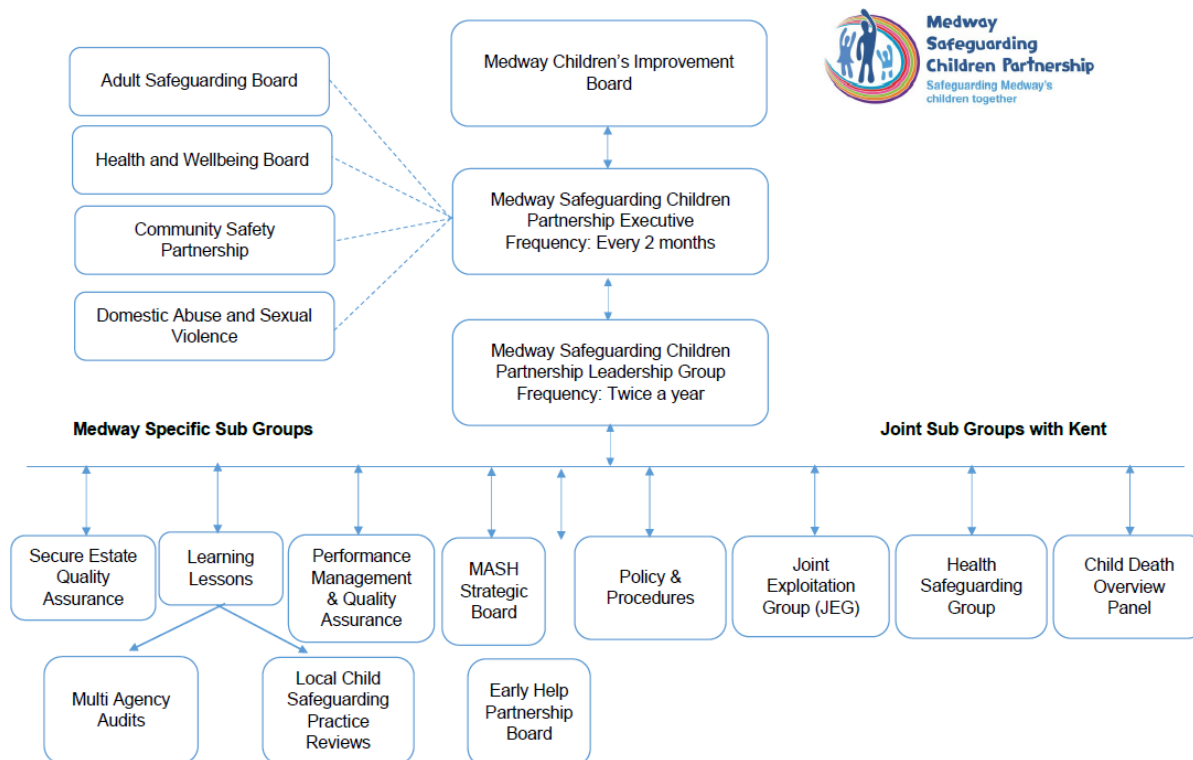
MSCP Structure

Detective Chief Superintendent Andy Pritchard, Kent Police took over as Chair of the MSCP Executive in September 2020 from Ian Sutherland, Director of People – Children and Adults Services.

The main objective of the MSCP Executive is to ensure that the functions of the safeguarding partners and relevant agencies are effectively discharged in accordance with the requirements set out in Working Together 2018.

The MSCP has nine sub groups in place, four of which are joint Kent and Medway sub groups. All sub groups have representation from the safeguarding partners and relevant agencies.

Figure 1 – MSCP Structure Chart (April 2021)



Key Relationships

In 2020-21, the MSCP agreed a new joint working protocol which sets out a framework for effective joint-working between the MSCP, the Medway Health and Wellbeing Board, Kent and Medway Safeguarding Adult Board and the Medway Community Safety Partnership. The protocol sets out the expectation that each Board will have the opportunity to see, comment on and challenge the priorities of other strategic bodies and be updated on progress on their work. The protocol sets out the commitment that all key strategic plans whether they are formulated by individual agencies or by partnership forums should include safeguarding as a cross-cutting theme. This has helped ensure there is synergy between the priorities of the partnerships and boards and enabled joint work around domestic abuse and exploitation.

Independent Scrutiny

The role of independent scrutiny is to provide assurance, through monitoring and challenge, in judging the effectiveness and quality of multi-agency arrangements to safeguard and promote the welfare of all children in a local area. This is undertaken through objective scrutiny, acting as a constructive critical friend, promoting reflection to drive improvements, and reporting how well the safeguarding partners are providing strong leadership to fulfil their safeguarding children role.

Rory Patterson is the Independent Scrutineer for the MSCP. See Section three for the Independent Scrutineer's evaluation.

The independent scrutiny arrangements for the MSCP also include a specific function for the secure estates. John Drew is the Independent Scrutineer for the Secure Estate. The work of the Independent Scrutineer for the secure estate includes:

- Chairing quarterly Secure Estate Quality Assurance meetings
- Maintaining regular contact with key individuals involved in safeguarding (e.g. Local Authority Designated Officer, Head of Safeguarding in the establishments, other parties)
- Undertaking periodic visits to Cookham Wood
- Overseeing the production of the annual 'Review of Safeguarding and Restraint'.

Section Three – Independent Scrutineer’s Evaluation

Medway continues to strengthen partnership working through its MSCP. Progress has been made in a number of key areas including approval of the following: a refreshed neglect strategy; and a new threshold document. Following a 5 week consultation period the partnership approved the threshold document at its February meeting. The document was well received and welcomed by partners following a period of consultation where almost 90% of respondents indicated agreement with the three new levels set out in the document. The document has now been disseminated across partners and supported by a multi-agency training programme.

The successful implementation of the new threshold document has underpinned the improved partnership approach to children with a child protection plan. Growing confidence in the effectiveness of children’s services and more effective partnership working has resulted in a significant reduction in the number of children with a child protection plan in Medway. This has been supported by an improved Early Help offer which is helping to reduce the need for children to be placed on child protection plan. Effectiveness of decision making has been validated by a deep dive audit undertaken by officers from Essex County Council, Medway Children’s Services Partner in Practice.

The MSCP continues to roll-out the Graded Care Profile 2 which is an assessment tool designed to help practitioners measure the quality of care a child is receiving. It is a key strand in Medway’s approach to addressing cumulative neglect. In its annual report the National Panel recognised the value of professionals using assessment tools to determine the extent of neglect a child was experiencing. The tool has not been rolled out as quickly as first anticipated and is not yet regularly in evidence through the quality assurance audit programme. However, the partnership has remained focussed on delivery of the programme and it will support their approach to addressing one of their key priorities.

Under the leadership of the partnership’s Executive, partners are developing a refreshed approach to contextual safeguarding including a range of tools to identify the risk of child exploitation. This wider partnership work has supported the improvement work of children’s services and has strengthened the partnership approach to addressing these concerns. However, the area’s approach to addressing contextual safeguarding has not yet been signed off by the Executive and this should be addressed as a priority by the partnership.

The MSCP has a strong process in place for undertaking rapid reviews and local child safeguarding practice reviews. The Learning Lessons Sub-Group is responsible for the dissemination of learning from local and national child safeguarding practice reviews and for monitoring the implementation of recommendations from reviews to ensure whole system learning. I have recently undertaken a review of the effectiveness of this process through the implementation of actions from the most recent learning lessons reviews. Members of the sub-group take responsibility for disseminating learning within

their respective organisations and I found some evidence that this is being embedded in practice and led to changes in practice.

The partnership has shown that it is open to change and has taken steps to ensure that reports focus on learning and that recommendations are purposeful. While there has been some evidence of drift in implementing recommendations from learning lessons reviews in the past, the partnership team continues to improve its processes to ensure timeliness and effective monitoring and implementation of recommendations. Further work will need to be undertaken to explore how the partnership can identify and respond effectively to work on the frontline. This includes the effectiveness of information sharing and joint working.

In its 2020 Annual Report the Child Safeguarding Review Panel once again reiterated that: **“If a rapid review has indicated that there is more learning to be gained, safeguarding partners should move to a LSCPR. There are no other types of review needed or allowed within Working Together 2018”**.

Learning Lessons reviews are detailed and comprehensive so there is no obvious reason why they could not be considered LSCPRs, particularly when the latter ensure the engagement of families and publication so that learning can be more widely disseminated. The Executive should consider how it can align its processes with WT 2018 and ensure that an LSCPR is undertaken when partners believe there is learning following from a case following a rapid review.

The partnership has a good process in place for conducting rapid reviews and notifying the National Panel when a serious child-care incident occurs. Feedback from the panel indicates that the format and content of rapid reviews in Medway is good. This should be seen in the context of the National Panel expressing concerns about variability in quality of rapid review reports they have received.

While the new arrangements are starting to have an impact on how partners work together in Medway, some partners feel less connected with the work of the partnership than they did under the Safeguarding Board. Although the partnership runs two stakeholder events annually the Executive should also consider how it can better engage with all partners and ensure continued engagement.

Finally, while the role of the statutory partner has been delegated in all partnerships in his recent review of the new arrangements by Sir Alan Wood has challenged whether partners can effectively hold each other to account or carry out the role as envisaged in the guidance. The statutory partners should meet to agree the level of delegation and how those delegates will be held to account.

Overall, Medway has a strong partnership with a sound governance structure comprising an Executive, and well attended sub-groups which undertake much of the work. It also has good formal links with other partnership boards to ensure

that local priorities are understood and delivery can be supported more widely. The partnership has coped well with the challenges over the past year but will need to be mindful of the turnover of key people within the Executive and the wider partnership. Fortunately, Medway has a strong partnership support function that ensures that the focus on priorities will be maintained.

Section Four – Evidence of Impact on priorities

In 2020 the MSCP set out its strategic plan for 2020 to 2022. The plan sets out five strategic priorities. The MSCP has a Business Plan which sets out detailed actions under each of the five priority areas. A summary of the key activity against each of the priorities is below.

Priority One: Effective Partnerships

What did we say we wanted to achieve?

- Partners hold each other to account, support and challenge each other and use the challenge and escalation process effectively
- A partnership that learns from case reviews and audits
- Professionals recognise and reflect the child's lived experience and utilise a range of communication methods to engage with children
- Children and young people have the opportunity to be involved in the work of the MSCP

What did we do and what was the impact?

In previous years, findings from Serious Case Reviews and Learning Lessons Reviews have found that the escalation process is not always followed e.g. in some cases concerns are escalated to the first level but when they are not resolved, the escalation process is not always followed and the issue is not escalated further. During the year the MSCP has reviewed the Escalation Policy and has included data on the number of escalations in the multi agency data set. The escalation policy has been promoted with partners and MSCP previously ran briefing sessions in 2019-20. We know that this has had an impact because agencies have reported through their section 11 audits that there is an increased awareness of the escalation policies and that these are being utilised.

During 2020-21, the MSCP identified the best ways to support a better understanding of thresholds across the partnership. A multi agency group developed proposals to review the threshold guidance document and introduce three levels of need. A consultation was held with partner agencies which agreed with the change. It was clear from the response to the consultation, to ensure that the document is understood and used consistently across the partnership, partner agencies wanted multi-agency training to support the launch of the Threshold document.

The MSCP launched the new Threshold Guidance at a Teams launch event with over 170 people on 16 March 2021. A series of training packages have also been developed and delivered including an introductory threshold video and virtual training. We will be able to measure the impact of the new threshold document in 2021-22 but early evidence suggests that at the 'front door' families are receiving the right service to match their needs.

During the year the MSCP has embedded the Quality Assurance Framework, this has included undertaking two multi agency themed audits, one rapid review and publishing one serious case review. Further information is available in Section 5 but we know that processes we have in place for rapid reviews are working and are helping the partnership identify learning at an early stage. Through the 57 section 11 audits that have been completed during the year, we know that agencies are compliant on most of the section 11 standards, that where there are gaps there are action plans in place and that partners feel engaged in the MSCP and highly regard the multi agency training delivered.

The MSCP held its second Leadership event on 16 October 2020. The Leadership events are run as safeguarding conferences, with attendance from all safeguarding partners and relevant agencies. The Leadership event was attended by over 75 professionals and focused on the Learning from the Williams Family Review; updates from Medway Children's Services, Kent and Medway Clinical Commissioning Group (CCG) and Kent Police; the consultation on the Threshold document and the launch of the Kent and Medway Exploitation tools.

During the year the MSCP has sought to improve its links with schools. We have seen an increase in engagement of schools in the MSCP Leadership events and an increase in the number of schools completing the safeguarding audit which is positive. The MSCP Executive invited a secondary and primary head teacher representative during the year and now has formal representation from both the primary headteacher forum and secondary headteacher forum which has helped to ensure that schools have a prominent role in shaping the work of the partnership.

Medway Children's Services has been rolling out Signs of Safety as the new model of social work practice. Signs of Safety is a child focused, family friendly, risk sensible framework for working with families. The MSCP has been supporting the roll out of Signs of Safety with partner agencies. The MSCP has signed a Signs of Safety Leadership Pledge and between January – March 2021, the MSCP has trained 238 professionals from across the partnership.

The MSCP has a website which it uses to promote safeguarding messages and raise awareness with professionals and members of the public. During 2020-21 the MSCP has published regular bulletins to ensure professionals are kept up to date with relevant policy, news and training events alongside the MSCP fact sheets.

The MSCP has made use of social media through its twitter account. Twitter provides an opportunity to raise awareness amongst children and young people and members of the community, as well as professionals. Since the start of the year we have increased the number of followers to 711. During the year we have used twitter to announce the publication of SCR's, published links to the MSCB Bulletin, raise awareness of learning at events such as our Leadership Event as well as general announcements.

Priority Two: Contextual Safeguarding and trauma informed practice

What did we say we wanted to achieve?

- An effective multi agency response to contextual safeguarding and agreed set of tools for practitioners, recognising exploitation of young people in all its forms
- An engaged workforce that understands contextual safeguarding and thresholds for tiered child protection interventions and services
- Partners act to prevent safeguarding issues arising and minimise the harm and impacts arising from those that do occur

What did we do and what was the impact?

The Joint Exploitation Group (JEG) is a joint group between the Kent Safeguarding Children Multi agency Partnership, Medway Safeguarding Children Partnership, Kent and Medway Safeguarding Adult Board and the Kent and Medway Safeguarding Children Partnerships. The group oversees the multi agency activity around: Sexual Exploitation; Gangs/ County Lines; Radicalisation/ Extremism; Unaccompanied Asylum Seeking Children; Modern Slavery and; Online Safeguarding.

From February 2020 the JEG set up a process of developing a Key Messages Bulletin from each meeting. The bulletin is circulated to all partner agencies across Kent and Medway to keep professionals up to date with the key work of the group.

During the year a key activity of the JEG has been to review the reporting and information sharing arrangements around exploitation issues and to develop and launch relevant procedures including the development of a multi agency child exploitation tool. The group has developed a reporting process and since September 2020 has started to review a quarterly contextual safeguarding report covering both Kent and Medway which informs partners of any patterns and trends covering issues such as emotional well-being, domestic abuse, missing children, county lines and serious youth violence. The JEG works with partners to produce a summary of the key patterns and trends that can be shared more widely. The missing and exploitation panel is held fortnightly and discusses new young people where there are concerns, and reviews those who have previously been presented. This meeting is well attended by all partners, and information is fed into the JEG.

The JEG launched the multi agency Child Exploitation Identification and Assessment tools towards the end of the reporting year. The tools replace the Child Sexual Exploitation (CSE) toolkit previously used and incorporate all kinds of Child Exploitation. The aims of the new tools are to improve how Kent and Medway disrupt exploitation and to help agencies work together to create safety and reduce harm. The **identification** tool is designed to support professional judgement for those professionals who do not normally complete social care assessments. The second tool, **assessment and planning** is an extension of

the identification tool, as well as identifying if a child or young person is being exploited. It helps professionals to analyse the risk, plan intervention(s) and reduce harm. The tools were launched alongside a series of training workshops. During the year, 121 professionals have been trained in the use of the tools by the MSCP. The Exploitation champions will be receiving training in 2021-22 to enable them to train others within their organisation to use the tools.

The group is reviewing a number of strategy and policy documents including the child trafficking procedures and the Kent and Medway Gangs Strategy. The Kent and Medway Violence Reduction Unit (VRU) is leading on the piece of work with partners. The review involved partners from a range of organisations who were able to comment either through facilitated workshops or an online survey. A revised Gangs Strategy for 2021-24 has now been developed and approved by the JEG focusing on young people aged 25 and under. The strategy will be published during 2021-22 and there will be an action plan to support its delivery.

Given the impact that Covid-19 has had on everyone's lives and people potentially spending more time online, it is important that everyone knows how to stay safe online. The Kent and Medway Online Safeguarding Group have established a multi-agency network of 'Online Safeguarding Champions'. Champions are expected to attend Online Champion Forums, which take place on a quarterly basis, to ensure knowledge is kept up to date.

Priority Three: Domestic Abuse

What did we say we wanted to achieve?

- To prevent and reduce domestic abuse and ensure when children experience domestic abuse they can access the help and services which they need
- To have a competent and confident workforce who are able to recognise and appropriately respond to the needs of children affected by domestic abuse

What did we do and what was the impact?

The Kent and Medway Domestic Abuse and Sexual Violence Executive (KMDASVE) has continued to meet through the year to deliver on the Kent and Medway Domestic Abuse Strategy 2020-2022. Its overarching purpose is to reduce domestic abuse and change attitudes, acting as a coordinating body between partners.

In October 2020, the Kent and Medway Domestic Abuse Needs Assessment was published setting out the estimated prevalence. The needs assessment brings together the data for domestic abuse together to help partners understanding and to inform commissioning and strategic planning.

In November 2020, the Kent and Medway Domestic Abuse website was relaunched. This coincided with a series of workshops which were delivered by

the Medway Domestic Abuse Forum (MDAF) during the Violence against Women and Girls (VAWG) 16 days of action.

The Domestic Abuse Bill, which received Royal Assent in April 2021, states new statutory obligations for the Kent and Medway domestic abuse and sexual violence executive (KMDASVG) and introduces the role of Domestic Abuse Commissioner with a focus on quality of service and consistency of offer over area. KMDASVG partners will need to work together to respond to the legal changes and guidance issued.

In 2019 the NSPCC announced that it would be withdrawing its offer of the Domestic Abuse, Recovering Together (DART) programme in Medway. The NSPCC were seeking a Medway agency to be trained to deliver the programme on their behalf. Medway's Early Help service, now known as Family Solutions, was identified to take on the DART programme and planning for delivery is underway with the NSPCC supporting a smooth handover.

The Medway One Stop Shop (OSS) closed in March 2020 until July 2020 when a "Lite" version opened with a reduced number of professionals. In November 2020 during the second lockdown the OSS closed face to face sessions, but Oasis the Medway Domestic Abuse Service offered a phone line. The OSS reopened in March 2021. Support for domestic abuse victims during the closed sessions came from individual services, details of which were widely circulated to partners.

In 2020 the Medway Domestic Abuse Forum (MDAF) became a Community Interest Company to allow them to make bids for funding for identified projects. Funding has been secured for the Community Domestic Abuse Programme (CDAP), a OSS coordinator and to fund facilitators to run the Healing Together group programmes. The Healing Together programme is suitable for 6 to 16 year olds and is a trauma informed programme used to support children experiencing ongoing stress and/or anxiety.

The MSCP has continued to offer Domestic Abuse training throughout the year using teams and has supported the training of Domestic Abuse champions managed through the Health Improvement Programme Manager (Domestic Abuse) within Medway Council Public Health.

Priority Four: Neglect

What did we say we wanted to achieve?

- Children in households where neglect is a feature are helped and when necessary protected
- To ensure that professionals have an enhanced understanding of neglect including adolescent neglect

What did we do and what was the impact?

Neglect can have a huge impact on children and young people. It often increases over time gradually and can be hard to detect so there's a risk that

agencies do not intervene early enough to prevent harm. Neglect is a key priority for the MSCP for 2020-22 because we know that both nationally and locally, neglect is a key feature in a number of cases. We also know from audits that it is an issue that is not always consistently identified and assessed. Serious Case Review (SCR) Baby Harris identified a collective poor understanding of the cumulative effects of neglect and whilst the MSCP multi agency themed audit on Neglect in September 2020 identified areas of good multi agency working, it found that the Graded Care Profile (GCP2) was not always being completed as the tool to measure neglect.

During 2020-21 the MSCP has led a number of areas of work to develop partnership working around neglect. In January 2021 the MSCP Executive agreed a plan to include increased training for professionals in the use of the GCP2, the establishment of GCP2 champions across all agencies and the development of a multi agency Neglect Strategy.

The GCP2 is a practical tool which helps practitioners measure the quality of care delivered to a child from an individual carer or carers over a short period of time. It is designed to give a representative overview of the current level of care.

In early 2021, a number of professionals attended the NSPCC train the trainer sessions to enable the rollout of the training which is to commence in May 2021. Regular training will be scheduled through 2021-22 to ensure that all professionals can access the training and are skilled to use the tool. All partner agencies have identified GCP2 champions who attend regular champions meetings to support the rollout of the tool. Implementation of the tool and its impact on how effective agencies are in identifying and addressing child neglect will be monitored by the MSCP.

What we know from the professionals that are already using it is it helps them be clear about what the basic needs of a child are and to what degree they are being met which allows them to make reassured judgments in relation to neglect. The rollout of the GCP2 across all partners will help ensure that there is consistency across and within agencies around assessing and intervening where neglect is an issue. The National Child Safeguarding Review Panel noted in its annual report that “the use of evidence-based risk tools and assessments of parenting capacity can support professionals in their assessment of neglect”.

In addition to the GCP2 training, the MSCP has developed Understanding Neglect training which will give practitioners a broader understanding of what neglect is. The multi agency Neglect Strategy will be launched in early 2021-22 setting out Medway’s approach to child neglect.

Priority Five: Effective Early Help

What did we say we wanted to achieve?

- Children and young people receive effective early help and appropriate interventions when needs are identified and/or problems arise

What did we do and what was the impact?

Early Help is a term used to describe support to potentially vulnerable children, young people and their families as soon as a problem starts to emerge. The purpose of early help is to prevent issues and problems from escalating by building resilience and this is achieved through prompt and targeted interventions to families by those who know them best. In summary, early help is a shared responsibility and not a distinct service.

From March 2020, Early Help's offer of support adapted to ensure creative ways of working with families during the global pandemic. Early Help and wider partners have continued to offer services throughout the pandemic from the 4 main Children and Family Hubs and 10 wellbeing sites in Medway; service delivery has included midwifery; health visiting; virtual group offers; counselling and meetings/ contacts with families. The hubs have remained open to ensure families have access to a 'place of safety', as a base for staff to meet with families, and to assist in the distribution of over 700 resource packs to families and the collection of food hampers and parcels.

In November 2020, the Early Help Partnership Board was established as a sub group of the MSCP to drive forward a multi-agency approach that would strengthen the offer to families across Medway and ensure that children and families receive early support. The Partnership Board has started to develop the Medway Early Help Strategy. The strategy acknowledges the role of the partnership to deliver effective early help, and strives to offer a single, seamless, and focussed approach to respond to the needs of children and families in Medway, when needed. The Medway Early Help Strategy 2021-24 will be published later in the year.

Ensuring children in secure units are safe

The MSCP set up a Secure Estate Quality Assurance Group in September 2019 and the group met four times in the reporting year. The Secure Estate Independent Scrutineer, John Drew, chairs the meeting. The primary focus of each meeting has been to review the work of the various safeguarding protective mechanisms for HM Young Offenders Institution (YOI) Cookham Wood (Including those operated by the custodial institutions themselves) that operate in the secure estate.

For the period 2020-21, Medway Safeguarding Children Partnership was responsible for producing an annual review of the use of restraint in HMYOI Cookham Wood. Up until its closure on 23 March 2021, the Medway Safeguarding Children Partnership had also been responsible for producing an annual review of the use of restraint in Medway Secure Training Centre (STC).

The MSCP, through the Secure Estate Quality Assurance Sub Group and in conjunction with the Independent Scrutineer for the Secure Estate, has developed a process to seek annually the views of a wide range of professionals and organisations with first hand, expert, experience of this on both safeguarding and the use of restraint. Fifteen partner agencies responded

to the request in 2020-21. In general, agencies reported to the MSCP that they know how to raise concerns in relation to Cookham Wood and that their staff feel able to raise any safeguarding concerns in relation to the establishment. Where agencies have done this there were examples that this process works.

The period 2020-21 has been impacted by the COVID-19 pandemic and the national lockdowns which were in force at various points during the year. At times during the year, the children in HMYOI Cookham Wood were subject to severe lockdown regimes due to the restrictions on children mixing. Restrictions started to lift throughout the year with young people being formed in small groups of four initially and then eight.

The innovative Medway Secure School is on track to open in January 2023. The first of its kind in the UK. The Secure School will be located on the site where the Medway STC was located. The new site will be run by the Youth Charity, Oasis Trust.

The Principal Director of the project will be joining the MSCP Secure Estate Quality Assurance Group in early 2021 and a working relationship is being established with partners. Once open, the Secure School will form part of the MSCP annual review of restraint and safeguarding in future years.

Impact of Covid-19

Whilst the covid-19 pandemic has been an important feature for the year and the impact of the ensuing lockdowns, partners in Medway immediately responded to the challenges to ensure that safeguarding children and young people remained a key priority. It has also led to better use of technology and becoming creative with ways to engage.

The MSCP has continued to deliver all of its key functions including statutory functions during the pandemic. We have delayed deadlines for particular pieces of work to reduce the impact on partner agencies and to allow them to focus on front line service. MSCP Executive and Sub Group meetings have continued as virtual meetings.

The pandemic has had an impact on the delivery of multi agency face to face training. This was on hold during April and May 2020 and in June 2020 virtual training begun being rolled out. The MSCP has been promoting the use of the MSCP E-learning packages as an alternative to face to face training. The MSCP has been sharing briefings from partners on changes to services and has set up a COVID-19 section on the MSCP website providing useful updates and resources for professionals.

Medway enjoys very strong relationships between both the statutory agencies and many of the relevant agencies which made it easier to facilitate emergency contingency planning work at the start of the pandemic. The ability to work remotely has meant that there is more integrated working in the partnership rather than partners seeing MSCP work as a bolt on.

For example the Police established a Covid safeguarding partnership for Kent and Medway during the first lockdown to establish where the service gaps were across Kent and Medway and in a number of cases allowed different partners to start to work together to buffer those gaps, particularly in the earlier days where we had numerous concerns about hidden harm and the way children's voices may not be heard because of being absent from schools, and with less natural surveillance within the community.

During the pandemic the three statutory partners also worked closely together to work proactively to establish safety of children and families who were 'high demand', (particularly for Domestic abuse) in the lead up to the pandemic then were quiet during lockdown. This work informed carefully orchestrated safeguarding visits.

Voice of Children and Young People

The MSCP is committed to listening to the voice of the child and improving engagement with children and young people in all aspects of our work. In the development of the 2020-2022 Strategic Plan, the MSCP undertook surveys with children and parents/ carers. In total 55 children and 40 parents/ carers completed an online survey. The MSCP considered the findings of the surveys and used them to help develop the MSCP Strategic Plan and Business Plan. The findings have also been used to develop training around child sexual exploitation, gangs awareness and online protection.

During the year, agencies have reported to the MSCP how children, young people and their families are consulted to inform the design, development and delivery of services. There were some good examples of engaging children from a wide range of agencies. Health agencies reported auditing children's records every six months to ensure the child's voice is captured, a new room in the paediatric was designed by service users. The Medway Youth Service involve young people in recruitment and the development review process as well as planning and scrutinising the work of the youth service. Other Medway Council services are informed by the views of children, young people and families. Some examples include Culture & Libraries surveys, social media comments and direct feedback, consultation on School Travel Plans, the new cultural strategy and Theatre 31 programmes where young people have been involved in the development and implementation and within Housing Services, resident panels and the STAR survey to capture the views of young people.

The MSCP shares the ambition for Medway to become a child friendly city, where all children and young people have a meaningful say in, and benefit from, the local decisions, services and spaces that shape their lives. During 2020-21, the MSCP will support this work and ensure children and young people can contribute to shaping of safeguarding policies and procedure.

Section Five – Learning and Improvement

The MSCP is a learning organisation where ‘Learning is a habit not a goal’ and supports the development of Medway professionals. In September 2019, the MSCP published a Quality Assurance Framework. The framework sets out how the MSCP monitors and evaluates the effectiveness of multi agency work to safeguard children.

The model includes:

- Use of performance data
- Multi agency audits
- Single agency audit reporting
- Section 11 audits
- Learning from case reviews
- Independent scrutiny

Section 11 Audits

Section 11 of the Children Act 2004 places a statutory responsibility on key agencies and organisations to make arrangements to ensure that in discharging their functions, they have regard to the need to safeguard and promote the welfare of children. The Section 11 audit is a self audit and repeated by the MSCP in full every two years. The MSCP uses the Section 11 audit to provide assurance around how agencies are working to safeguard children.

In February 2020, the MSCP held a launch event for the 2020-22 Section 11 audit which for the first time was joint with Kent. Due to the covid-19 pandemic and the subsequent lockdown having a direct impact on all agencies, the deadline for submissions for completion was extended until November 2020. All Medway agencies completed the audit and across Kent and Medway 57 audits in total were completed. All audit submissions were analysed and a series of multi-agency review panels which provided a further element of challenge and scrutiny were then held in February and March 2021.

The Section 11 process has enabled agencies to self-assess the safeguarding practice within their organisation and rate performance as ‘fully met’, ‘partially met’ or ‘not met’ and to discuss the findings at panel meetings with similar organisations. 77% of agencies fully met the majority of the indicators at first submission and where they were not fully met they identified actions with agreed timescales to meet the indicators.

Agencies who span Kent and Medway were positive about completing just one audit to cover both areas. Despite some time lapses in the process, the use of MS Teams video conferencing enabled the panel meetings to go ahead during the covid-19 pandemic. The meetings were well attended with a good representation of agencies across both Kent and Medway. The vast majority of agencies commented that the meetings were useful and provided a good opportunity to learn from others. The process highlighted areas where organisations can work together better; for example, the Kent Fire and Rescue Service proposed that agencies consider their service in potential Children in

Need cases as it may be that the Fire Service have been in the home before and may have some knowledge of the family. If they have not been involved, this is something that can be noted and a home visit completed, for example in the cases of neglect. Another example is Kent Sport who submitted a return covering their work in Kent areas but highlighted that the service also supports sports clubs in Medway. Therefore, further work will be taking place within Medway to strengthen this working relationship and wider network.

There are safeguarding policies and procedures in place and at least one person responsible for safeguarding within the organisation at both senior and operational level. There are some excellent examples of engaging with children and families to improve practice and service delivery. Some agencies acknowledged that more could be done to engage families and it is encouraging to see that there is a commitment to do so over the coming year.

It is positive to report that so many agencies are compliant on most of the Section 11 standards. Due to the time lapse between the original submission and the panel meetings taking place, some organisations were able to report progress at the panel meetings. Many updated returns showed original 'partially met' indicators to now be 'fully met'. The panel meetings have resulted in the 'partially met' indicators now having clear actions assigned and time frames to work towards.

The key areas for improvement include increasing understanding of any commissioned services and ensuring that these are compliant with Section 11 requirements, knowledge of the LADO function and continued Partnership development. Kent, specifically, has been asked by relevant agencies and NHS organisations under the main Partner agency of 'Health' to improve upon all communications from the Partnership.

As well as providing assurance to the MSCP about how agencies are working to safeguard children, through the audit and panel sessions, partners reflected that there has been positive engagement between the MSCP and partner agencies particularly through the twice yearly Leadership events held in Medway and the Performance Management and Quality Assurance (PMQA) sub group meetings have been helpful in ensuring partners are kept well informed and fully up to date.

The S11 self-assessment audits stated escalation policies are known and utilised and health partners specifically commented that the escalation policy was well embedded and straightforward to use. In addition partners reflected that the MSCP multi-agency training is highly regarded, valued and trusted.

Multi agency dataset

Partner agencies submit on a quarterly basis their agency data to the Performance Management and Quality Assurance (PMQA) subgroup. In November 2020 the subgroup made some changes to the way it reviews and scrutinises the quarterly dataset. From November 2020, the dataset has been circulated to members three weeks prior to the meeting and members are asked to submit their questions on the dataset ahead of the meeting. This new process

has worked well and both health representatives and the NSPCCC have played a key role in scrutinising the data.

Below are two examples of how subgroup members have used the dataset to identify areas of concern:

- The PMQA subgroup escalated concerns to the MSCP Executive in 2020 that a health provider attendance at child protection conferences was significantly lower than it should be with only 36% of initial child protection conferences attended in quarter 3 2019-20. Following escalation an action plan was put in place to address this and in quarter 3 2020-21 this attendance had increased significantly to 100%.
- The PMQA subgroup challenged a health providers figures around paediatricians only submitting reports for 50% of child protection review conferences and not attending any. This issue was reviewed by and it has been identified that some of the consultants were sending reports directly and not copying to the safeguarding team, so these figures were not accurate.

The subgroup has also approved changes to the dataset for 2021-22. The changes will include using Power BI to present the dataset information to make it more visual and easier for partners to interpret. The dataset will be reworked to focus on the current MSCP priorities, and the review has also offered an opportunity for partners to reconsider the data they provide to the dataset.

Rapid Reviews and Local Child Safeguarding Practice Reviews

Child Safeguarding Practice Reviews (formerly Serious Case Reviews (SCRs) are undertaken when children die or are seriously injured, and abuse and/or neglect are suspected or known to be a factor, and/or there are concerns about how local agencies worked together. Local Safeguarding Children Partnerships may decide to conduct a Local Child Safeguarding Practice Review (LCSPR) if a child has been seriously harmed and in accordance with the guidance in Working Together to Safeguarding Children (2018). The purpose of reviews of serious child safeguarding cases, at both local and national level, is to identify improvements to be made to safeguard and promote the welfare of children.

During 2020-21 the MSCP has reviewed its processes for referrals for case reviews and rapid reviews. One Rapid Review was completed during the year in relation to a fatal incident involving a young person. As a result of the rapid review which was during the first covid-19 lockdown period, partner agencies reviewed their caseloads to identify anyone with higher risks who may need additional support during Covid-19. The MSCP specifically promoted training and resources for all staff working with children to have a basic understanding of suicide prevention issues and to increase knowledge and confidence about keeping children safe, particularly children with ADHD. Medway Council and other youth services also offered virtual sessions focusing on emotional wellbeing as well as positive support. During the year we have had assurance from the national child safeguarding practice review panel that our decision

making has been correct and that our rapid reviews are comprehensive and identify all the learning.

In January 2020 SCR Baby Harris was published. The SCR was undertaken after emergency services were called to the home address by Baby Harris' parents after finding him unresponsive. Observations of Baby Harris' body indicated that he had been dead for some time before emergency services had been called. The review gives an overview of the family background, identified good practice and lessons arising from the review for both individual agencies and the safeguarding children partnership. The recommendations from the review were:

- The partnership to seek assurance regarding how the lived experience and voices of children living in neglectful circumstances, are heard and reflected in assessments and plans.
- Embedding learning about the impact of risks associated with poor adult mental health, adult substance misuse, domestic abuse and the importance of engaging families and male carers in assessing risk.
- The importance of understanding family history and how this influences the interventions that are offered to children and their families.
- The partnership to seek assurance about the current model of health visiting
- The importance of holding children at critical transfer points
- The partnership to seek assurance about the availability of services for parents that are experiencing depression and anxiety, but are not presenting as suffering from acute mental health issues

The MSCP Learning Lesson Sub-group is monitoring the implementation of the above, as well as additional operational recommendations identified by agencies involved in this SCR.

The MSCP published the findings of the Williams Family Learning Lessons Review in October 2020. This review was undertaken following reports to Kent Police from a member of the public that two very young children were running naked in the street. Police attended the address and subsequently placed the children in police protection due to the conditions they found. The trigger incident occurred at the height of lockdown during the covid-19 pandemic and the review found that some agencies responses were affected by this although they should have been responding to emergencies as usual.

The review identified the following areas for service improvement:

- The MSCP should in light of covid-19, require all agencies to have a safeguarding protocol addressing how agencies will ensure their working practices continue to safeguard children and young people from initial response onwards and how interagency information sharing will be promoted.

The action plan that has been developed as a result of these recommendations is monitored by the MSCP Learning Lesson Subgroup.

Multi Agency Audits

The MSCP has in place a Multi Agency Audit Group, the Case File Audit Group (CFAG) whose role it is to undertake audits to identify good practice and multi agency learning.

Each meeting the CFAG focuses on a theme and spends the day reviewing cases. The theme of the audits is agreed by the MSCP Executive. Cases are selected at random from a list that meets the criteria of the theme of the audit. Partner agencies are asked to audit their case files and populate the MSCP case file audit tool. Within the audit meeting partners present the reasons why the child came to their attention and the work that was done with the children and family. The audit panel then scrutinise the case on the quality of work overall from a multi-agency perspective.

An overview report is completed to provide a key summary of the lessons from the audits and recommendations from the group. These recommendations are built into the MSCP Action and Improvement plan which is managed and implemented by the MSCP Learning Lessons sub group. During 2020-21, the MSCP completed one multi agency audit.

Themed audit: Neglect

In this audit 1 of the 6 cases looked at in the themed audit was identified as good, 3 as requiring improvement and 2 as inadequate. The following key themes were identified:

- There was some good multi agency work evidenced in some of the cases including effective information sharing with partners.
- Whilst neglect was identified as a primary risk factor in the cases reviewed, the Graded Care Profile (GCP2) had not been completed and there was no evidence that this had been considered in all cases.
- There was little evidence of the voice of the child and lived experience work as it was not recorded in the case files.

Themed audit: Sexual Abuse

In this audit 3 of the 6 cases were identified as requiring improvement and three as inadequate. The following key themes were identified:

- There was evidence of timely response to referrals, appropriate involvement of the Sexual Abuse Referral Centre (SARC) in strategy meetings and child abuse medicals taking place.
- The lived experience and voice of the child was missing.
- There were missed opportunities in some cases and a lack of professional curiosity.

MSCP Training

One of the most immediate ways in which the MSCP influences the effectiveness of safeguarding in Medway is through running a range of multi agency safeguarding training sessions for professionals including courses on basic and intermediate child protection, child sexual exploitation, domestic abuse and Prevent. These have included half and full day training courses as well as shorter specialist workshops, usually 2 hours and online training.

Between April 2020 and May 2020, training was not delivered due to the Covid-19 pandemic. The MSCP started to deliver virtual training from June 2020 and by September 2020 was delivering the majority of courses virtually as opposed to face to face. Virtual training continued for the rest of 2020-21. During 2020-21, the MSCP provided 29 multi-agency training sessions across Medway attended by 450 professionals. This was lower than 2019-20 where 970 delegates attended training over 48 sessions.

Core Training Session	Attendance 2020-2021	Occurrences 2020-2021
Basic Child Protection	34	4 (all sessions held virtually)
Child Sexual Exploitation (CSE)	10	2 (all sessions held virtually)
Intermediate Child Protection	24	4 (all sessions held virtually)
Taster Sessions		
Taster: Looking out for Lottie	18	3 (2 session held virtually)
Taster: Behind Closed Doors	14	3 (2 sessions held virtually)
Taster: How to Integrate CSE into Your Schools Safeguarding Culture	42	3 (all sessions held virtually)
Taster: PREVENT and Radicalisation	15	2 (both sessions held virtually)
Taster: Extremist Exploitation of Covid-19	9	2 (both sessions held virtually)
Taster: Contextual Safeguarding	21	2 (both sessions held virtually)
Taster: Extremist Use of Online Gaming	4	1 (held virtually)
Kent and Medway Sexually At-Risk Exploitation Tool	121	5 (held virtually) Kent and Medway, evaluation provided for the Medway only delivery
Signs of Safety	238	4 (held virtually)
Total	450	29

In addition the MSCP held a Leadership event and a separate launch for the Medway Threshold document.

MSCP Events	Attendance
MSCP Leadership Event	87
Medway Threshold Event	170
Total	257

Following a Rapid Review completed in early 2020, the MSCP also organised and trained the following:

MSCP Rapid Review - Learning Lessons	Attendance
Kent Mind Suicide	76
Family Action professionals SENDIAS ADHD workshop	273
Parents SENDIAS ADHD workshop	47
Total	396

The MSCP also supported the following virtual workshop sessions throughout the year organised by the Medway Domestic Abuse Forum (MDAF).

Conference Worksop Training Session	Attendance 2020 - 2021
Lessons Learnt During Lockdown	37
Domestic Abuse Checklist	33
Victim Blaming	46
My Role, Your Role	41
Total	157

The MSCP has worked with the Kent Safeguarding Children Multi-Agency Partnership (KSCMP) to commission 30 e-learning packages to professionals working across Medway. In total, 11,359 delegates have completed courses between April 2020 – March 2021. This is more than 15 times the number who completed e-learning in the previous year where 742 delegates completed courses.

Evaluations continue to be completed at the end of each training session and post course evaluation are sent to delegates, if a response is not received managers are also emailed. The MSCP training officer now also attends Learning Lessons sub group meetings to ensure the learning from audits is immediately embedded in training.

In addition, during the year the following activity has been undertaken:

- Virtual training for basic child protection, intermediate child protection and child sexual exploitation (CSE) have been developed
- A contextual safeguarding training course has been developed
- Child Exploitation training has been developed in line with the new Kent and Medway Child Exploitation tool
- The MSCP has been working with the Kent and Medway Violence Reduction Unit (VRU) to develop a county wide gangs training package

- Harmful sexual behaviour training has been developed and quality assured.

“...I am aware of the 5 categories of neglect now, which will really benefit me within my role...”	“...I will use this knowledge when escalating cases or stepping back up from step-down...”
“...I will use the knowledge and tools when undertaking direct work...”	“...I understand how a child may be ‘pulled’ or ‘pushed’ into CSE, depending on their circumstances...”

Child Deaths

The objective of the child death review process is to learn lessons and apply the learning to help prevent future deaths. Medway’s Child Death Overview Panel was established in April 2008 and the new Kent and Medway child death arrangements were published in June 2019. In line with statutory guidance, it reviews every child death in Medway. The purpose is to identify trends and any matters of concern, where remedial action could be taken in similar situations to positively influence outcomes for children and young people.

Across Medway there were 17 deaths reported to the ECDOP system in 2020-2021. Of these, five of the children usually resident in Medway died in hospitals or hospice settings outside of Medway. Three of these deaths presented as sudden or unexpected. Twelve of the children had prematurity² or preterm labour cited as the/one of the causes of death.

Reporting of Medway deaths through the ECDOP system continues to be effective. Information is disseminated quickly to partners and the Child Death Review process in place in Medway is in line with national guidance. However, due to impact of the Covid-19 pandemic the final stage of the process has not been routinely achieved. Multi agency Kent and Medway Child Death Overview Panel (CDOP) meetings that complete the review of a case have not taken place. Where possible reviews have been undertaken remotely and some cases have been reviewed. The Deputy Designated nurse who acts as the Child Death Review Coordinator for Kent and Medway was seconded to frontline health services and the Child Death Review team has not had the support of an administrator for the whole period. There have also been staffing changes in the core members of CDOP. These issues have now been rectified.

At the end of March 2021 there were 32 outstanding Medway cases due for review. 15 from 2019-2020 and 17 from 2020-2021

Some cases may not be reviewed in the year of death where not all the relevant information is available to CDOP. The CDOP aims to review cases as soon as possible, however other processes for example post mortems, inquests and Local Children Safeguarding Practice Reviews, or other reviews delay cases being heard at CDOP. In 2020 – 2021 there is a direct correlation between the

² Prematurity occurs when a baby is born before 37 weeks. Normal gestation is 40 weeks.

impact of the Covid-19 pandemic and the time taken for cases to be reviewed at CDOP.

Section Six – MSCP Budget

6.1 A summary of the accounts for MSCP for 2020-21:

MSCP Budget 2020-21

MSCP Income from Partner Agency Contributions 2020/21 (Outturn)

Kent & Medway NHS & Social Care Partnership	3.28%	(6,764)
NELFT	3.28%	(6,764)
Medway Community Healthcare	3.28%	(6,764)
NHS Medway CCG	3.28%	(6,764)
Kent Police and Crime Commissioner	7.48%	(15,434)
National Probation Service	1.01%	(2,094)
KSS Community Rehabilitation Company	1.52%	(3,141)
HMYOI Cookham Wood	3.39%	(6,996)
Medway Secure Training Centre	N/A	0
Kent Fire & Rescue	1.37%	(2,833)
Medway NHS Foundation Trust	3.28%	(6,764)
Medway Council	68.84%	(142,078)
Other Income – Training	N/A	(60)
Contribution/Drawdown of Reserve	N/A	(7,103)
Total Income		(213,559)

MSCP Expenditure 2020/21 (Outturn)

Expenditure	Amount (£s)
Staff (including Independent Scrutineers fee)	170,900
LCSPR and LLR costs (incl Reviewers)	28,436
Other Staffing Costs (including Training)	2,612
E-learning Package	5,426
Kent & Medway Safeguarding Children Procedures (Tri.x)	2,267
Printing, Stationery, general office costs (including computer equipment)	3,819
Meeting and training event costs (including refreshments for all training events and SCR Panel meetings)	0
Travel costs	99
Contribution to Reserves	0
Total expenditure	213,559

Appendix One – Glossary

CAF	Common Assessment Framework
CAMHS	Child and Adolescent Mental Health Service
CAN	Children’s Action Network
CCG	Clinical Commissioning Group
CDOP	Child Death Overview Panel
CFAG	Case File Audit Group
CIN	Child in Need
CRC	Community Rehabilitation Company
CSC	Children’s Social Care
CSE	Child Sexual Exploitation
DANS	Domestic Abuse Notifications
DfE	Department for Education
DHR	Domestic Homicide Review
EHA	Early Help Assessment
FGM	Female Genital Mutilation
HMYOI	Her Majesty’s Young Offender Institution
KMDASG	Kent and Medway Domestic Abuse Strategy Group
KSCMP	Kent Safeguarding Children Multi Agency Partnership
IRO	Independent Reviewing Officer
JTAI	Joint Targeted Area Inspection
LAC	Looked After Child
LADO	Local Authority Designated Officer
LGA	Local Government Association
LLR	Learning Lessons Review
LSCB	Local Safeguarding Children Board
LCSPR	Local Child Safeguarding Practice Review
MARAC	Multi Agency Risk Assessment Conference
MASH	Multi Agency Safeguarding Hub
MCH	Medway Community Healthcare
MFT	Medway Foundation Trust
MSCP	Medway Safeguarding Children Partnership
MVA	Medway Voluntary Action
ONS	Office for National Statistics
PMQA	Performance Management and Quality Assurance
SAB	Safeguarding Adults Board
SCR	Serious Case Review
STC	Secure Training Centre
UASC	Unaccompanied Asylum Seeking Children
YOT	Youth Offending Team

Appendix Two – Relevant Agencies

Relevant agencies are those organisations and agencies whose involvement the safeguarding partners consider is required to safeguard and promote the welfare of local children. The relevant agencies for Medway have been chosen as organisations and agencies that can work in a collaborative way to provide targeted support to children and families as appropriate. The Safeguarding Partners will regularly review the list of relevant agencies. The list of relevant agencies and how they will be engaged in the MSCP is set out below:

Agency	How they will be involved?
Probation	
Kent Sussex and Surrey Community Rehabilitation Company (CRC)	Leadership Group; Sub Groups
National Probation Service	Leadership Group; Sub Groups
Health	
Kent and Medway Partnership Trust (KMPT)	Leadership Group; Sub Groups
NHS England	Leadership Group; Sub Groups
Medway NHS Foundation Trust	Leadership Group; Sub Groups
NELFT	Leadership Group; Sub Groups
Kent Community Health NHS Foundation Trust (KCHT)	Leadership Group; Sub Groups
Medway Community Healthcare (MCH)	Leadership Group; Sub Groups
Open Road	Leadership Group; Sub Groups
Turning Point	Leadership Group; Sub Groups
Education	
Medway Primary Schools	Executive; Leadership Group; Engagement through Medway Educational Leaders Association (MELA)
Medway Secondary Schools	Executive; Leadership Group; Engagement through Medway Secondary Heads Association (MSHA)
Mid Kent College	Leadership Group
Medway Independent Schools	Leadership Group
Early Years Providers	Leadership Group
Secure Estate	
Medway Secure Training Centre (STC)	Leadership Group; Sub Groups; Secure Estate Sub Group
HMYOI Cookham Wood	Leadership Group; Sub Groups; Secure Estate Sub Group
Voluntary Sector	
Medway Voluntary Action (MVA)	Leadership Group; Sub Groups
MY Trust	Leadership Group; Sub Groups
NSPCC	Leadership Group; Sub Groups
Other Agencies	
Medway Youth Offending Team (YOT)	Leadership Group; Sub Groups
Medway Council - Public Health	Leadership Group; Sub Groups
Kent Fire and Rescue Service	Leadership Group; Sub Groups
CAFCASS	Leadership Group; Sub Groups
British Transport Police	Leadership Group
Housing Providers	Leadership Group

Children's Homes	Leadership Group
Sports Groups/ Associations	Leadership Group
Faith Groups	Leadership Group