

Council Priority: PEOPLE

Supporting Medway's people to realise their potential

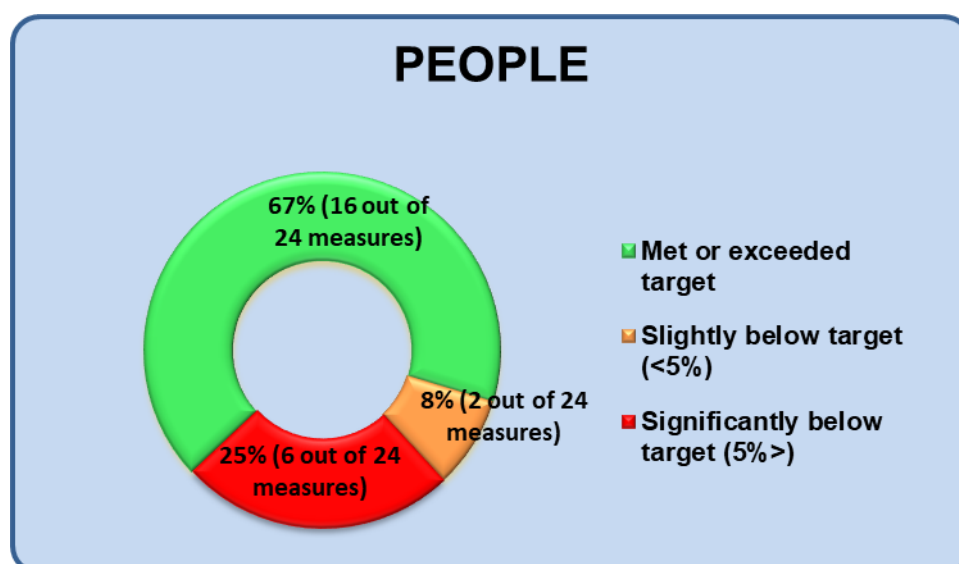
Performance: Quarter 4 2020/21

Key

Red	significantly below target (>5%)	Amber	slightly below target (<5%)	Green	met or exceeded target
IMP	Improved	DET	Worsened	Static	Static
Data	No target	NA	Not available	Not available	Not available
Short Trend	Since last qtr	Long Trend	Avg over last 4 qtrs	Avg over last 4 qtrs	Avg over last 4 qtrs

Council Plan measures: summary performance

There are 31 Council Plan measures for this priority. We are reporting on 24 as data for 7 measures is not available this quarter.



Improved performance

- 57% (13 out of 23*) improved long term (average of previous 4 quarters)
- 52% (12 out of 23*) improved over the short term (since last quarter)

* where data available

Measures in target (green)

Code	Status	Measure	Long Trend	Short Trend
ILAC1	Green	Average Caseloads in Assessment teams	IMP	IMP
ILAC2	Green	Average Caseloads in Post Assessment teams	IMP	IMP
ILAC6	Green	Rate of open CIN cases per 10,000	IMP	IMP
CA13	Green	The percentage of children permanently excluded from school (upheld only)	DET	DET
CASEIKS4 Ofsted	Green	The percentage of secondary sector schools in Medway judged to be good or better	STATIC	STATIC
CASEISPEC Ofsted	Green	The percentage of special schools in Medway judged to be good or better	STATIC	STATIC
SE2 OEPr	Green	The percentage of primary sector schools in Medway judged to be good or better	IMP	STATIC
CASEIEYFS Gap	Green	Percentage achievement gap at Early Years Foundation Stage Profile between the lowest attaining 20 % of children and the mean	IMP	IMP
ASCGBT001	Green	% of Long-term packages that are placements	IMP	DET
ILAC5	Green	% of children with long-term fostering as a plan, where the child, carer and service have agreed for the placement to last until the child is ready to leave care.	DET	IMP
CSC0004	Green	Number of LAC per 10,000 children	IMP	IMP
OfstedPrim Mnt	Green	The percentage of Maintained primary schools in Medway judged to be good or better	IMP	STATIC
CSC0006	Green	Number of CP per 10,000 children	IMP	IMP
PH16	Green	Smoking at time of delivery	IMP	IMP
ILAC3	Green	Completed initial child and family assessments which started as S47, where the child was visited within 1 working day.	IMP	IMP
PH26	Green	Healthy Settings programme	DET	DET

Measures slightly below target (amber)

Code	Status	Name	Long Trend	Short Trend
ASCOF 1C(2i)	Amber	Percentage of clients receiving a direct payment for their social care service	IMP	IMP

Code	Status	Name	Long Trend	Short Trend
ASCOF 2A(2)	Amber	Permanent admissions to care homes, per 100,000 pop – 65+	DET	DET

Measures significantly below target (red)

Code	Status	Name	Long Trend	Short Trend
A1	Red	The average number of days (over the last 36 months) between a child entering care and moving in with adoptive family	DET	DET
ILAC4	Red	Completed initial child and family assessments which started as S17, where the child was visited within 5 working days.	STATIC	IMP
ASCOF 2A(1)	Red	Permanent admissions to care homes per 100,000 pop – 18-64	DET	DET
PH14	Red	Excess weight in 4–5-year-olds (2019/20 annual)	DET	DET
PH15	Red	Excess weight in 10–11-year-olds (2019/20 annual)	DET	DET
ILAC7	Red	The percentage of CSC Audits graded good or outstanding	NA	NA

Measures not available this quarter

Code	Status	Name	Long Trend	Short Trend
EDU3(b)	N/A	The percentage of children who were persistently absent from school	N/A	N/A
ASCOF 1G (n)	N/A	Proportion of adults with a primary support reason of learning disability support who live in their own home or with their family	N/A	N/A
SEKS4A8	NA	Average attainment 8 score	NA	NA
SE KS2Mnt	NA	The percentage of children who achieve the required standard or above in Reading, Writing and Mathematics at KS2 in Maintained Schools Only	NA	NA
ASCOF 2Cii	NA	Delayed transfers of care from hospital and those which are attributable to adult social care, per 100,000 population	NA	NA
SE KS2	NA	The percentage of children who achieve the required standard or above in Reading, Writing and Mathematics at KS2	NA	NA
N23	NA	% children social work substantive posts not filled by permanent social workers	NA	NA

Strategic Risks

The quarter 4 20/21 strategic risk register is attached at Appendix 5. The register shows all strategic risks together with mitigation in place to minimise impact and likelihood. The risks pertaining solely to this council priority are shown below (full details in Appendix 5).

Reference	Risk Register Page (app 5)	Risk	Owner	Current residual risk score	L-likelihood I-impact
SR09A NEW	14	Changing Demographics of Older People and Working Age Adults	Director of People	BII	L - high I - major
SRO9B	18	Keeping vulnerable adolescents safe	Director of People	BII	L - high I - major
SR26	25	Non-delivery of Children's Services Improvement	Director of People	CII	L – significant I - major
SR39	38	Financial Pressures on SEN Budgets	Director of People	BII	L - high I - major

The following risks pertain to all priorities:

Reference	Risk Register Page (app 5)	Risk	Owner	Current residual risk score	L-likelihood I-impact
SRO3B	4	Finances	Chief Finance Officer	AI	L – very high I - catastrophic
SR46	8	Medway's Economic Recovery from Covid19	AD Regeneration (Recovery Lead Officer for Medway Council	BII	L - high I - major

Reference	Risk Register Page (app 5)	Risk	Owner	Current residual risk score	L-likelihood I-impact
SR32	26	Data and information	Chief Legal Officer	CII	L - significant I - major
SR36	29	Alternative service delivery models	Chief Legal Officer, Chief Finance Officer	BIII	L - high I - moderate
SR37	33	Cyber Security	Chief Finance Officer	CI	L - Significant I - Catastrophic
SR02	42	Business continuity and emergency planning	Director of Place, Chief Finance Officer	DII	L - low I - major
SR49	59	Income Reduction due to Covid19	Chief Finance Officer	BII	L - high I - major

Council Plan Outcome: Healthy and active communities

Programme: Improving everyone's health and reducing inequalities

Council Plan Measures

PH14 Excess weight in 4-5 year olds

Annual	Target	Value	Status	Aim to	Long Trend	Short Trend
2019/20	22.4%	25.5%	Red	Minimise	DET	DET
2018/19	21.5%	24%	Red	Minimise	DET	DET

PH15 Excess weight in 10-11 year olds

Annual	Target	Value	Status	Aim to	Long Trend	Short Trend
2019/20	34%	36.9%	Red	Minimise	DET	DET
2018/19	34%	36.2%	Red	Minimise	DET	DET

Comments

Rates of children classified as "overweight" and "obese" are monitored through the National Child Measurement Programme (NCMP), which is delivered through schools. Children's weight and height are measured in reception class (ages 4-5) and again in year 6 (ages 10-11). For children in reception year, the rates of those with excess weight is 25.5% in Medway for 2019/20 (increasing from 23.9% from the previous year), which is above the England average of 23%.

Obesity is a complex problem with multiple causes and significant implications for health and beyond. To tackle the increasing issue of obesity in children and adults, national and local action is needed now. With no one single solution available, tackling such an ingrained problem requires a long-term, system-wide approach that makes obesity everybody's business. Medway Council's Public Health Team have developed a whole system approach to tackling obesity, based on Public Health England's recently published whole system obesity guidance. Medway Council provide a wide range of services to prevent and treat childhood obesity including:

- Comprehensive range of family and adult support services for tier 2 and tier 3 weight management, offering free support services for people at varying levels of excess weight.
- Healthy eating and cookery programmes for families and children.
- Regular promotion of national and local campaigns such as Sugar Smart, Change4Life and Beside You breast feeding campaign.
- A planning guidance note that restricts hot food takeaways within 400m radius of schools.
- Providing a wide range of training to professionals and volunteers on subjects like healthy eating and obesity.
- Commissioning 0-19 provider to include healthy weight as a priority in health visiting and school nursing contracts.
- Coordination of an annual healthy weight summit that encourages as many public, private, voluntary, and academic sector partners to promote this agenda and take their own actions forwards.
- A Better Medway workplace programme, that supports workplaces to create healthy workforces.
- Free swimming for under 16's.
- Multiple sport and physical activity opportunities within schools and in community settings.

Wider system action is integral if we are to realise the national aspiration of halving childhood obesity by 2030. The Medway Healthy Weight Network and its subgroups are one vehicle where this action can be taken forward. The network has stated the following priorities for 2021/22:

- Increasing the volume of peer supporters to improve breastfeeding rates.
- Enhanced activity for the infant feeding communication campaigns.
- Achieving a higher level of Baby Friendly Accreditation in acute and community settings.
- Cooking on a budget classes.
- Developing and marketing culturally sensitive eatwell guidance.
- Improving the whole school food approach.
- Enhancing the newly established Physical Activity Alliance and the partnership working between the group.
- Understanding and addressing the barriers of why specific groups have the lowest physical activity levels.

PH26 Healthy Settings programme

Quarter	Target	Value	Status	Aim to	Long Trend	Short Trend
Q4 2020/21	20	20	Green	Maximise	IMP	IMP
Q3 2020/21	13	13	Green	Maximise	IMP	IMP

Comments

Assessments have been difficult to schedule due to restrictions imposed by the pandemic with numerous organisations choosing to hold submitting evidence until staff return from furlough. Despite this the target has been achieved. With 4 Golds and 3 silver awards issued during this quarter (not including re accreditations for organisations who have held the award for 3 years). Notable organisations this quarter include BAE systems and KMPT who complete the award and now look to strive for platinum through promotion of the programme and by providing inspiration to other organisations in their business sectors of healthcare and technology.

Supporting Healthy Weight

We held the Healthy Weight Summit in March. The summit brought together a wide range of private, public, voluntary, and academic sector partners to agree a set of priorities for the network for 2021/22. The priorities were identified by the Medway Food Partnership, Physical Activity Alliance and Infant Feeding Strategy, which are subgroups of the Healthy Weight Network. The priorities include increasing peer support for breastfeeding, health promotion campaigns, developing a whole food approach in Medway schools, and identifying and addressing barriers to physical activity. The nine priorities will be taken to the Health and Wellbeing Board to recruit high level support.

Council Plan Outcome: Resilient families

Programme: Together We Can - Children's Services Council Plan Measures

A1 The average number of days (over the last 36 months) between a child entering care and moving in with adoptive family

Quarter	Target	Value	Status	Aim to	Long Trend	Short Trend
Q4 2020/21	450	527	Red	Minimise	DET	DET
Q3 2020/21	450	510	Red	Minimise	IMP	DET

Comments

The 3-year average has seen an increase to 527 days, impacted by COVID-19 restrictions and some delays in finalising court proceedings

Actions:

Medway has now joined with Kent and Bexley into a Regional Adoption Agency so the service will work through the RAA to identify adoptive families in a timely way.

19 Medway children have been matched since November 20 at an Adoption Partnership panel. Panels are held weekly which ensures that children are matched without delay where suitable adopters can be found within the resources of Adoption Partnership.

Adoption Partnership have approved 29 adopters since Nov 20, with a further 23 approvals booked on for the next three months, which indicates the strength of the Partnership going forward and the benefit that it will bring to Medway children with an adoption plan.

Benchmarking

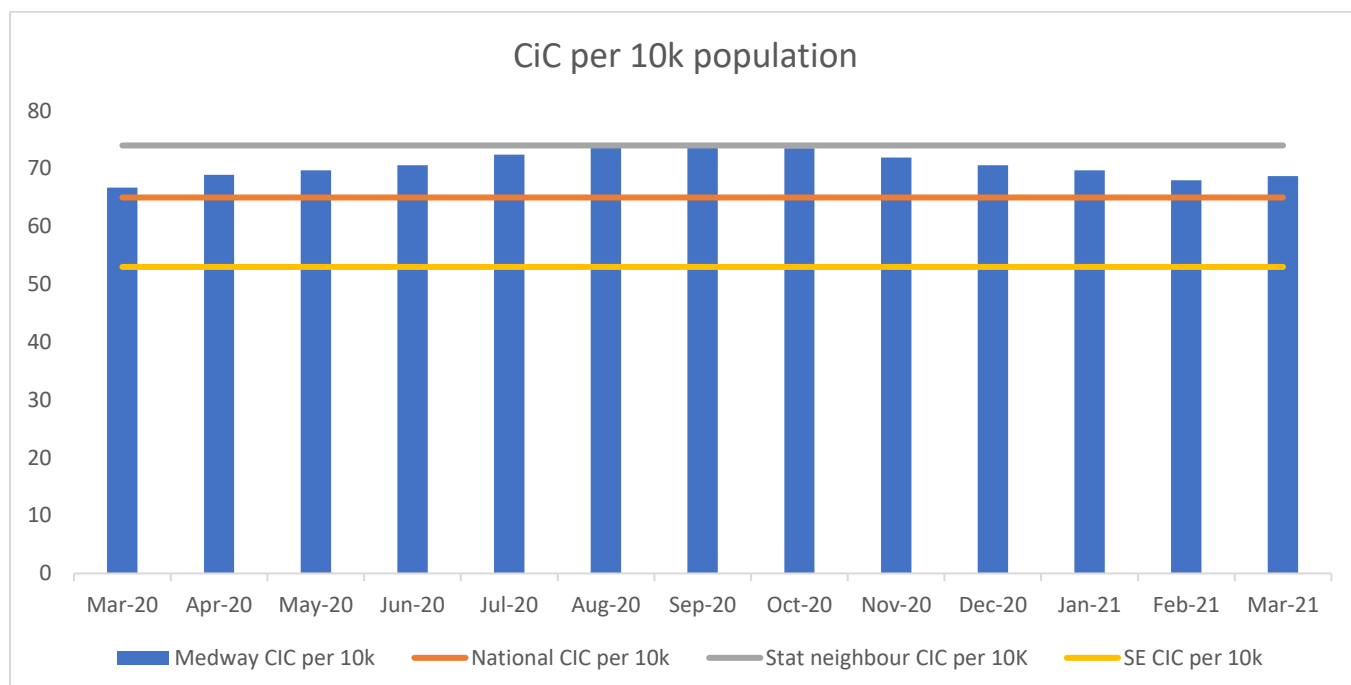
The latest national benchmark is 486 days, and the statistical neighbour outturn is 440. Medway is closer in line with the South East benchmark of 529

CSC0004 Number of LAC per 10,000 children

Quarter	Target	Value	Status	Aim to	Long Trend	Short Trend
Q4 2020/21	70.0	68.7	Green	Minimise	IMP	IMP
Q3 2020/21	70.0	70.6	Amber	Minimise	DET	IMP

Comments

Currently there are 438 children in care, which is a rate of 68.7 per 10,000. This is a drop 29 children from the end of Q3. This may be a result of the conclusion on court proceedings that were held up by COVID-19 restrictions.



Benchmarking

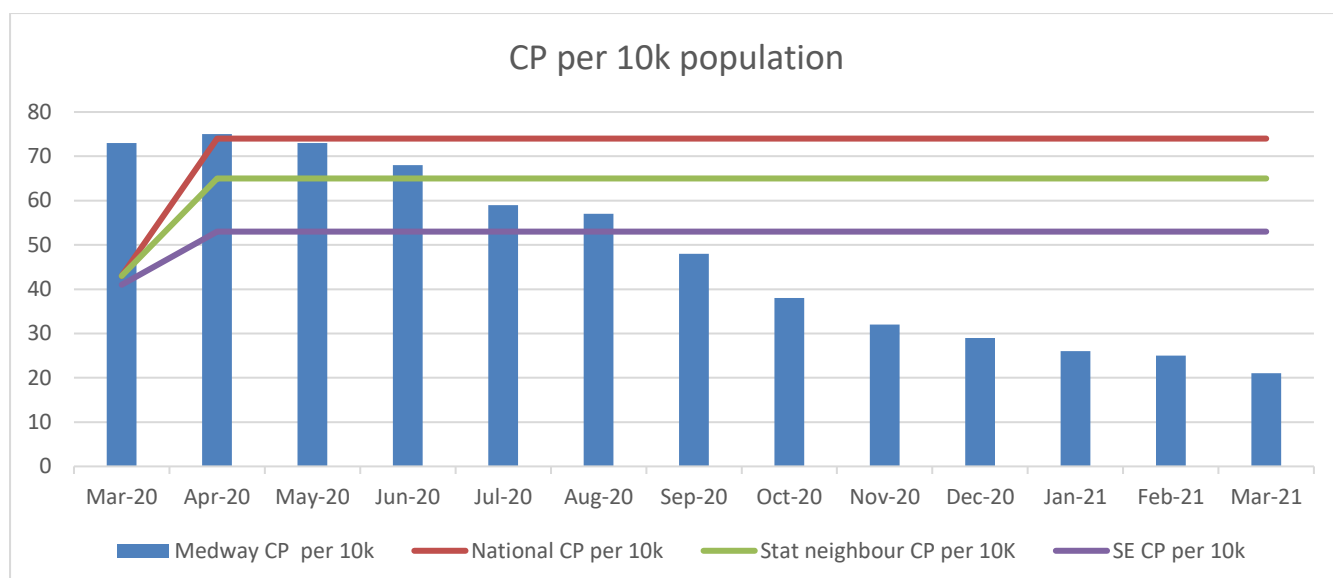
Nationally there are 65 Looked After Children per 10,000 population, Medway has a lower rate than our statistical neighbours, at 74 per 10k. However, the rate in the South East is lower than in Medway, at 53 per 10,000 population.

CSC0006 Number of CP per 10,000 children

Quarter	Target	Value	Status	Aim to	Long Trend	Short Trend
Q4 2020/21	65.3%	20.8%	Green	Minimise	IMP	IMP
Q3 2020/21	65.3%	29%	Green	Minimise	IMP	IMP

Comments

Currently there are 133 children on a Child Protection Plan. This equates to a rate of 20.8 per 10,000, a further reduction from the rate at the end of Q3.



Benchmarking

Medway is below the latest National and Statistical neighbour rate, of 43 per 10,000 and South East rate of 41.

Action:

The focus in the Improvement Plan on improving quality of practice, introducing additional scrutiny of child in need plans and working proactively with adolescents, has led to this reduction, and brought Medway below national and statistical neighbours.

Decision making has been tested by our Partner in Practice, Essex, and decisions to end plans were found to be appropriate. The service is continuing to monitor progress against this and reports monthly to the Improvement Board. Referrals to the service have been low over the last year due to COVID-19 and a rise in referrals with an associated increase in numbers of children progressing to child protection plans is anticipated, now that schools have returned.

ILAC1 Average Caseloads in Assessment teams

Quarter	Target	Value	Status	Aim to	Long Trend	Short Trend
Q4 2020/21	22	13.2	Green	Minimise	IMP	IMP
Q3 2020/21	22	14.2	Green	Minimise	DET	IMP

Comments

The snapshot shows the average caseload in the assessment teams is 13.2, down from Q3 and comfortably below target. 13% of social workers have caseloads above target, a rise from Q3 with the highest caseload of any worker being 28.

Actions:

Case load reduction is a key focus of the Improvement Plan, acknowledging that quality of practice is dependent on workers having a manageable workload.

Staffing resources will be kept under review to maintain caseloads at manageable levels which support positive interventions with children and families

ILAC2 Average Caseloads in Post Assessment teams

Quarter	Target	Value	Status	Aim to	Long Trend	Short Trend
Q4 2020/21	18	10.3	Green	Minimise	IMP	IMP
Q3 2020/21	18	11.8	Green	Minimise	IMP	IMP

Comments

The snapshot shows post assessment social work teams (Areas CS Teams 1-8) have an average caseload of 10.3, a reduction from 11.8 at the end Q3. This remains below target. The highest caseload is 21 and 10% of social workers have caseloads over the target down from 17% in Q3.

ILAC3 Completed initial child and family assessments which started as S47, where the child was visited within 1 working day.

Quarter	Target	Value	Status	Aim to	Long Trend	Short Trend
Q4 2020/21	90.0%	100%	Green	Maximise	IMP	IMP
Q3 2020/21	90.0%	80%	Red	Maximise	DET	DET

Comments

This is a new Council Plan measure, introduced following the ILACS inspection, which challenged unidentified risk. The Improvement Plan has a clear focus on quality of practice, including assessment and plans. The snapshot at the end of March saw all visits being within 1 day.

Actions:

Continue to review this indicator regularly at Performance Clinics. Where a delay is identified, each case is scrutinised.

ILAC4 Completed initial child and family assessments which started as S17, where the child was visited within 5 working days.

Quarter	Target	Value	Status	Aim to	Long Trend	Short Trend
Q4 2020/21	85%	75%	Red	Maximise	STATIC	IMP
Q3 2020/21	85%	70%	Red	Maximise	DET	DET

Comments

This is a new Council Plan measure, introduced following the ILACS inspection, which challenged unidentified risk – see above for reference to Improvement Plan. Whilst performance has improved from the end of Q3 the target has been missed.

Actions:

Continue to review this indicator regularly at Performance Clinics. Managers will maintain overview and scrutiny of all delays and impact on children.

ILAC5 % of children with long-term fostering as a plan, where the child, carer and service have agreed for the placement to last until the child is ready to leave care.

Quarter	Target	Value	Status	Aim to	Long Trend	Short Trend
Q4 2020/21	60.0%	60%	Green	Maximise	DET	IMP
Q3 2020/21	60.0%	59%	Amber	Maximise	DET	DET

Comments

This measure has met target, representing a significant improvement in performance over the year. Achieving permanency for children is a key issue in the improvement plan and mechanisms have been put in place to review permanency plans and to strengthen the work of the fostering panel to continue to improve on this indicator.

Actions:

Fully implement the Permanency Policy and convene regular permanency panels
Implement the Fostering Strategy to increase supply, choice, and support for carers.

ILAC6 Rate of open CIN cases per 10,000

Quarter	Target	Value	Status	Aim to	Long Trend	Short Trend
Q4 2020/21	382	277	Green	Minimise	IMP	IMP
Q3 2020/21	382	299	Green	Minimise	IMP	IMP

Comments

The rate of children in need (CIN) continues to fall and is now at its lowest level this year. Medway is below all our comparator groups. The number of CIN will be affected by the closure of CP plans, if those children then cease to receive a service.

A child in need is defined, under the Children Act 1989 “as a child who is unlikely to reach or maintain a satisfactory level of health or development, or their health or development will be significantly impaired, without the provision of services, or the child is disabled.” This includes all looked after Children and all children on a child protection plan as well as other children supported by social services who are not looked after on a CP plan.

Benchmarking

Nationally there are 324 CIN cases per 10,000 population. This is slightly higher 331 for our statistical neighbour group and at 304 in the South East.

Action:

Ensuring children can access the right service at the right time is part of the vision for the service and reviewing the threshold for statutory service provision is an action in the Improvement Plan. This has been done in consultation with partners.

The Service will launch the revised Threshold Document with partners and support through workshops. The monitoring appropriateness of referrals and re-referral rates continues.

The service has established a Child in Need Review Officer to monitor the quality of practice for children subject to Child in Need plans and support correct application of threshold. As part of the role the Child in Need Review Officer is establishing a multi-agency panel for Child in Need cases so that risks are robustly addressed, and the children and families receive services early enough before risks escalate.

N23 The percentage of children social care substantive posts not filled by permanent social workers

Quarter	Target	Value	Status	Aim to	Long Trend	Short Trend
Q4 2020/21	25%	N/A	N/A	Minimise	N/A	N/A
Q3 2020/21	25%	21%	Green	Minimise	IMP	IMP

Comments

Q4 data not available.

This measure is a national indicator that describes the total percentage of substantive posts not permanently filled throughout the whole Service and includes posts outside of the Assessment and post assessment teams.

Action:

Continue to roll out targeted recruitment and provide opportunities for internal career progression and development to support retention

ILAC7 The percentage of CSC Audits graded good or outstanding

Quarter	Target	Value	Status	Aim to	Long Trend	Short Trend
Q4 2020/21	80%	45%	Red	Maximise	NA	NA

Comments

The service is committed to completing 10 audits a month selected from across all service areas. The target is at least 80% of audits will be graded Good or Outstanding by end September which will be an improvement from the current position of 45%

Programme: The best start in life**Council Plan Measures****CASEIYFS Gap Percentage achievement gap at Early Years Foundation Stage Profile between the lowest attaining 20 % of children and the mean**

Annual	Target	Value	Status	Aim to	Long Trend	Short Trend
2019/20	30.0%	28.7%	Green	Minimise	IMP	IMP
2018/19	30.0%	31.8%	Red	Minimise	DET	DET

Comments

Data is now published for the 18/19 academic year (reported 19/20). Medway has made a 10% improvement (3.1pp) compared to the 17/18 academic year (reported 18/19). This is a strong performance. Medway is now better than national, by 11% (3.7pp) and more importantly Medway has seen an improvement year on year whilst nationally rates have worsened, by 2%. This means that Medway has now moved from the 2nd quartile into the first quartile (best performing.) nationally.

PH16 Smoking at time of delivery (SATOD)

Quarter	Target	Value	Status	Aim to	Long Trend	Short Trend
Q3 2020/21	17.5%	12.42%	Green	Minimise	IMP	IMP
Q2 2020/21	17.5%	15.27%	Green	Minimise	IMP	IMP

Comments

As with previous submissions, data reported represents SATOD prevalence for the whole of Kent & Medway in line with the new CCG footprint. Work continues in identifying a process to collect quarterly data for the Medway footprint only. For comparison purposes, it should be noted that Pentana data submitted for Q1 2020/21 reflects overall Medway NHS Foundation Trust (MFT) data (Medway and Swale footprints), and not data for the whole of Kent & Medway.

Medway Stop Smoking Service has maintained effective service delivery throughout the COVID-19 pandemic by adapting to remote smoking cessation consultations and maintaining provision of stop smoking medication. We have continued to work effectively with midwifery colleagues, resulting in a 10.8% increase in midwife referrals from 360 (2019/20 YTD) to 399 (2020/21 YTD). This quarter has also seen an exemplary success rate of 71%, with 25 women successfully quitting smoking with the service from 35 women setting a quit date.

Healthy Child Programme

The service is now back to operating face to face as standard. Virtual appointments can be accommodated if requested. Coverage for all five mandated checks is over 90%. The service has commenced the screening programme for weight, vision and hearing for children in the first year of primary school. This was due to start in late 2020 so a rapid catch-up is planned by the end of the school year. Demand for School Nursing services is high, so Medway Community Healthcare have recruited additional nurses to support schools with mental health and wellbeing, who are due to start in May. A digital inclusion project providing access to tablets and data for health visiting, midwifery and Early Help is now in place and is already supporting families.

The Child Health team have been providing resource packs and lesson plans to schools. They are now producing monthly return to school packs for both staff and students. The packs cover topics from bereavement to domestic abuse. The team have been shortlisted for national awards (CYP Now for Adolescent Self-Harm project) and (RSPH for Digital)

Public Health have been working with the Communications and Digital team and an external media agency to work with the Council on innovative messaging and channels. This will be aimed at young people around COVID-19. The campaign has been very successful with nearly half a million views of the images and videos on social media, and over a million impressions (advertisements appearing on a user's screen).

Council Plan Outcome: Older and disabled people living independently in their homes

Programme: Improve support for vulnerable adults by working with partners and communities

Council Plan Measures

ASCGBT001 % of Long term packages that are placements

Quarter	Target	Value	Status	Aim to	Long Trend	Short Trend
Q4 2020/21	30.0%	28.6%	Green	Minimise	IMP	DET

Quarter	Target	Value	Status	Aim to	Long Trend	Short Trend
Q3 2020/21	30.0%	28.4%	Green	Minimise	IMP	DET

Comments

There is minimal fluctuation in the number of clients in long term services and clients that are placements, therefore this measure remains below target. Currently there are 759 clients in residential and Nursing homes and a total of 2651 clients receiving long term care.

Benchmarking

National data for 2019/20 for long term clients in placements is 30.1%, no change from the 2018-19 figure.

Whilst the long-term expectation is that ongoing demographic changes, in particular those relating to an ageing population, will impact on the number of placements needed, the current COVID-19 situation may be impacting the numbers currently being admitted to and in placements.

ASCOF 1C(2i) Percentage of clients receiving a direct payment for their social care service

Quarter	Target	Value	Status	Aim to	Long Trend	Short Trend
Q4 2020/21	30.0%	29.5%	Amber	Maximise	IMP	IMP
Q3 2020/21	30.0%	28.7%	Amber	Maximise	DET	IMP

Comments

As at end March 2021, this measure is sitting at an amber RAG rating at 28.7%, with 557 clients receiving a direct payment. This is a volatile measure which needs to keep pace with the fluctuations in clients receiving long term services. Currently 99.5% of Clients receive self-directed support.

Benchmarking

Nationally and for the South East 27.9% of clients with an ongoing long-term service receive a direct payment a drop on 2018/19 from 28.3% and 29.5%. Our statistical neighbours' performance is higher at 30%.

Actions

As lockdown eases, the service is noticing an increase in referrals. Over the coming weeks the service is focusing their efforts on those who had support packages set up during lockdown following discharge from hospital and where possible transferring to Direct Payment.

The Service are targeting day support providers as they open. Work will concentrate on those accessing the service, reviewing their services and where possible transferring them to direct payment.

ASCOF 1G(n) Proportion of adults with a primary support reason of learning disability support who live in their own home or with their family

Quarter	Target	Value	Status	Aim to	Long Trend	Short Trend
Q4 2020/21	70.0%	N/A	N/A	Maximise	N/A	N/A
Q3 2020/21	70.0%	67%	Amber	Maximise	IMP	DET

Comments

The final year end result for this measure will be calculated as part of the ASC statutory returns. A provisional result will be available in July 2021.

Benchmarking

The current national outturn is 77.3% and our statistical neighbours' is 83.5%.

ASCOF 2A(1) Permanent admissions to care homes per 100,000 pop – 18-64

Quarter	Target	Value	Status	Aim to	Long Trend	Short Trend
Q4 2020/21	3.5%	5.4	Red	Minimise	DET	DET
Q3 2020/21	3.5%	3	Green	Minimise	IMP	IMP

Comments

Please note the target is apportioned per quarter. The full year target is 14 admissions per 100,000, which equates to approx. 24 clients being placed. In Q1, 7 placements were recorded, 6 in Q2 and 5 in Q3. In total 10.6 admission per 100,000. During Q4 9 placements have so far been recorded, missing the target by 3 individual admissions. This means that the annualised rate is 16 admissions per 100,000, missing the target by 2 admissions per 100,000 admissions. This may increase if packages are added retrospectively.

Benchmarking

Nationally the benchmark is 14.6 per 100,000 for the full year, just under 3.7 per 100,000 for each quarter and for our statistical neighbours the figure is 13.8 (a little under 3.5 per 100,000)

Actions

The service has seen an increase in numbers of individuals with a higher level of need. Working with our commissioning colleagues we will continue to identify and

commission further appropriate alternative forms of accommodation with a view to reduce the numbers requiring care home admissions.

ASCOF 2A(2) Permanent admissions to care homes, per 100,000 pop – 65+

Quarter	Target	Value	Status	Aim to	Long Trend	Short Trend
Q4 2020/21	154.5%	159.6%	Amber	Minimise	DET	DET
Q3 2020/21	154.5%	131.2%	Green	Minimise	DET	DET

Comments

Please note the target is apportioned per quarter. The full year target is 618 admissions per 100,000, which equates to approx. 273 clients being placed. This has been achieved.

For the full year there has been 205 placement starts, this equates to 463.7 admissions per 100,000, under target.

In Q1, 38 placements were recorded, 39 in Q2 and 58 in Q3. 70 people have been placed in Q4 (159.6 per 100,000). This is above the quarterly target and may increase as placements are updated.

30% of new starts were in Nursing care, 70% in residential care.

The impact of Covid19 on our older population with increased hospital admissions and acuity of need has in turn led to an increase in number of placements, particularly recorded in Q4. We will closely monitor this going forward as there is good evidence of the positive impact of vaccination on our older population.

Benchmarking

The National rate of admissions is 584. This equates to 146 per quarter. Our statistical neighbours 2019/20 outturn of 595.2 (148.8 per quarter).

ASCOF 2Cii Delayed transfers of care from hospital and those which are attributable to adult social care, per 100,000 population

Quarter	Target	Value	Status	Aim to	Long Trend	Short Trend
Q4 2020/21	4.1%	NA	NA	NA	NA	NA

Comments

Data collection has been suspended by Central Government.

Social Isolation

The Covid-19 Pandemic has made the issue of isolation and loneliness worse.

A welfare response team was brought together to 'check-in' on vulnerable people and at-risk groups. This saw the coordination of telephone befriending projects in partnership with Medway Voluntary Action; Age UK Medway; Kent Muslim Welfare Association; Churches Together in Medway; Walderslade Together; wHoo Cares; Medway African and Caribbean Association; and Mutual Aid Road Reps.

The team conducted 739 calls and made 279 referrals to different organisations.

Virtual workshops have been developed to create connections and bring people together. These included Adult Education and Public Health classes offering physical activity sessions, cooking and healthy eating workshops, virtual coffee groups, and support with mental health and wellbeing.

Social isolation and loneliness training modules have moved to virtual delivery. The use of Teams and Zoom has enabled the delivery of six workshops with 98 people attending from a diverse range of services and community projects.

Targeted work has taken place to support BAME groups around interventions that positively impact social isolation. This has included working with Medway Diversity Forum, Kent Muslim Welfare Association, and Medway African Caribbean Association with high levels of cultural awareness to ensure befriending projects are relevant and effective.

Council Plan Outcome: All children achieving their potential in schools

Programme: Raising aspiration and ambition

Council Plan measures

CA13 The percentage of children permanently excluded from school (upheld only)

Quarter	Target	Value	Status	Aim to	Long Trend	Short Trend
Q4 2020/21	0.02%	0.01%	Green	Minimise	DET	DET
Q3 2020/21	0.02%	0.00%	Green	Minimise	IMP	STATIC

Comments

Please note, the annual target of 0.06% is apportioned across each quarter.

This financial year there have been 4 permanent exclusions. This equates to 0.01% and is below target. All these exclusions are in secondary schools.

In the 20/21 academic year so far, 13 exclusion processes were started. 4 resulted in an exclusion which equates to 0.01%. 5 were retracted or not upheld and 4 exclusions remain unresolved.

Clearly, COVID19 and the closure of schools has been a significant factor in reducing the numbers of exclusions.

Benchmarking

Nationally the rate of permanent exclusions is 0.09% (2018-19)

Actions

During 'National Lockdown' the inclusion team continued to offer support via 'The School Support Group' which is held virtually. Once all pupils returned to school, the team members re-engaged with pupils in their home school setting. Team members also contacted families during lockdown to try and keep links with pupils on their caseload. Virtual meetings were offered to schools and advice and guidance given via telephone and email to support around pupils whose behaviour could lead to an exclusion.

CASEIKS4 Ofsted Partnership measure: Percentage of all Secondary Schools judged good or better

Quarter	Target	Value	Status	Aim to	Long Trend	Short Trend
Q4 2020/21	85%	94.4%	Green	Maximise	Static	Static
Q3 2020/21	85%	94.4%	Green	Maximise	IMP	Static

Comments

Of the 18 Secondary schools in Medway 4 are classed as outstanding, 13 are good and 1 is inadequate. This means that 17 of 18 are good or better. The inadequate judgment applies to the Waterfront UTC from its time as Medway UTC.

Benchmarking

Nationally this figure is 76% and the South East currently has 86.6% of schools graded good or better.

Actions

During COVID19 Parliament has suspended Ofsted as an inspection regulator.

CASEISPEC Ofsted The percentage of special schools in Medway judged to be good or better

Quarter	Target	Value	Status	Aim to	Long Trend	Short Trend
Q4 2020/21	90.0%	100%	Green	Maximise	Static	Static
Q3 2020/21	90.0%	100%	Green	Maximise	Static	Static

Comments

During COVID19 Parliament has suspended Ofsted as an inspection regulator

EDU3(b) The percentage of children who were persistently absent from school

Quarter	Target	Value	Status	Aim to	Long Trend	Short Trend
Q4 2020/21	11.4%	N/A	N/A	Minimise	N/A	N/A
Q3 2020/21	11.4%	13.5%	Red	Minimise	DET	Static

Comments

Data is currently not available for this measure

Benchmarking

Nationally the 2018-19 rate of persistent absence (PA) was 11.4%, Medway had a rate of 10.9%

OfstedPrimMnt The percentage of Maintained primary schools in Medway judged to be good or better

Quarter	Target	Value	Status	Aim to	Long Trend	Short Trend
Q4 2020/21	93%	96%	Green	Maximise	IMP	STATIC
Q3 2020/21	93%	96%	Green	Maximise	IMP	STATIC

Comments

24 out of 25 LA maintained primary schools are rated good or better, with 4 graded outstanding, 1 requires improvement.

Due to COVID19 Parliament has suspended Ofsted as an inspection regulator, so there are no changes from quarter 2.

SE KS2 The percentage of children who the required standard or above in Reading, Writing and Mathematics at KS2

Annual	Target	Value	Status	Aim to	Long Trend	Short Trend
2019/20	65%	NA	NA	Maximise	NA	NA
2018/19	64%	64%	Green	Maximise	IMP	IMP

Comments

Due to Covid 19 there will be no KS2 data for the 19-20 academic year.

SE KS2Mnt The percentage of children who achieve the required standard or above in Reading, Writing and Mathematics at KS2 in Maintained Schools Only

Annual	Target	Value	Status	Aim to	Long Trend	Short Trend
2019/20	65%	NA	NA	Maximise	NA	NA

Comments

Due to Covid 19 there will be no data for the 19-20 academic year.

SE2 OEPr Partnership measure: Percentage of all Primary Schools judged good or better

Quarter	Target	Value	Status	Aim to	Long Trend	Short Trend
Q4 2020/21	87.5%	89.5%	Green	Maximise	IMP	STATIC
Q3 2020/21	87.5%	89.5%	Green	Maximise	IMP	IMP

Comments

Currently 68 schools are good and better, 8 are outstanding and 60 are good from a cohort of 76.

There are 51 academies. Of these 86% are good or better (4 Outstanding and 40 Good) 3 require improvement and 4 are inadequate.

Due to COVID19 Parliament has suspended Ofsted as an inspection regulator, so there are no changes from quarter 3.

SEKS4A8 Average attainment 8 score

Annual	Target	Value	Status	Aim to	Long Trend	Short Trend
2019/20	46.6%	NA	NA	Maximise	NA	NA
2018/19	46.6%	46.6%	Green	Maximise	IMP	IMP

Comments

Due to Covid 19 there will be no KS4 data for the 19-20 academic year.