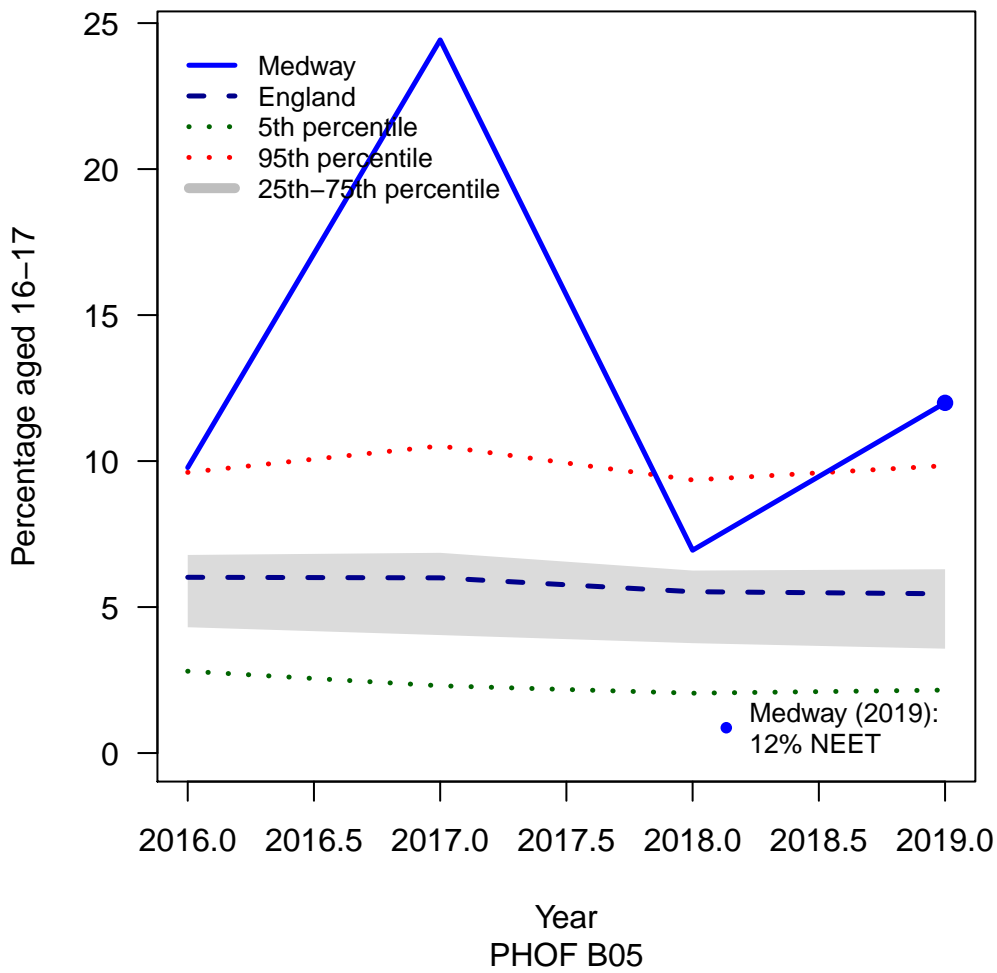
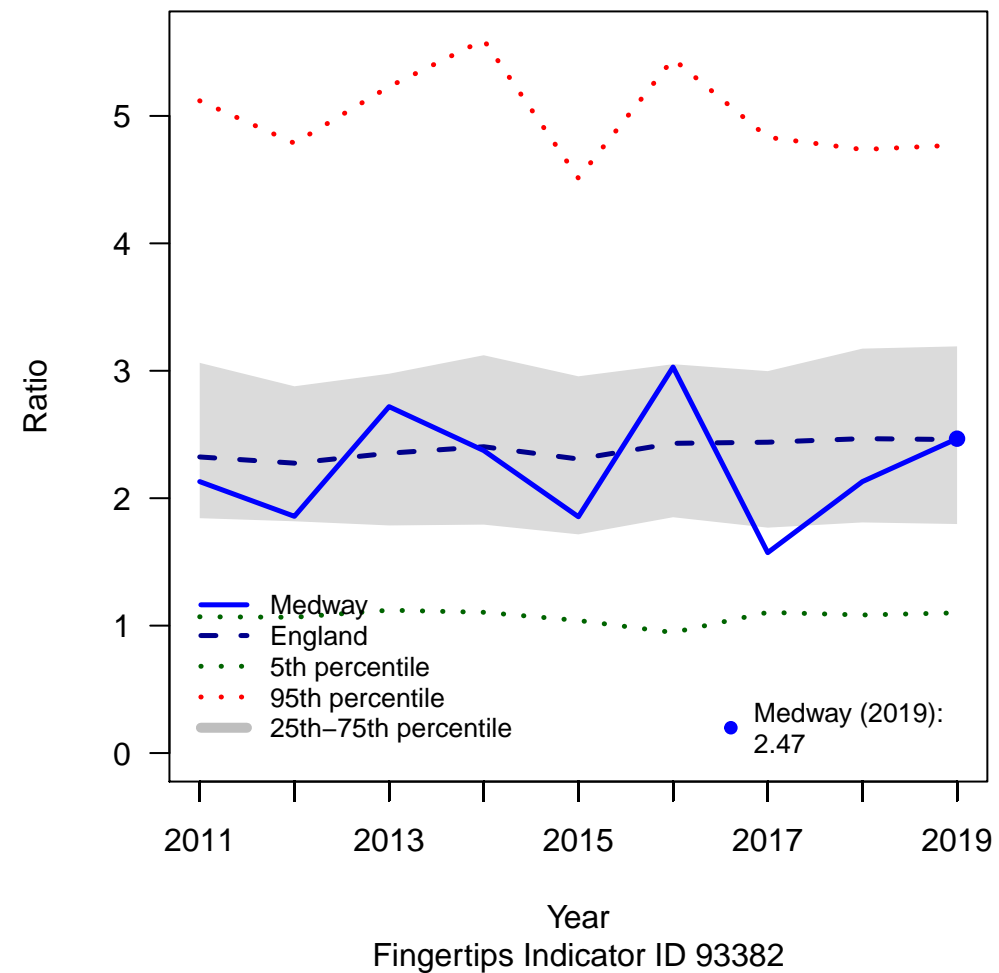


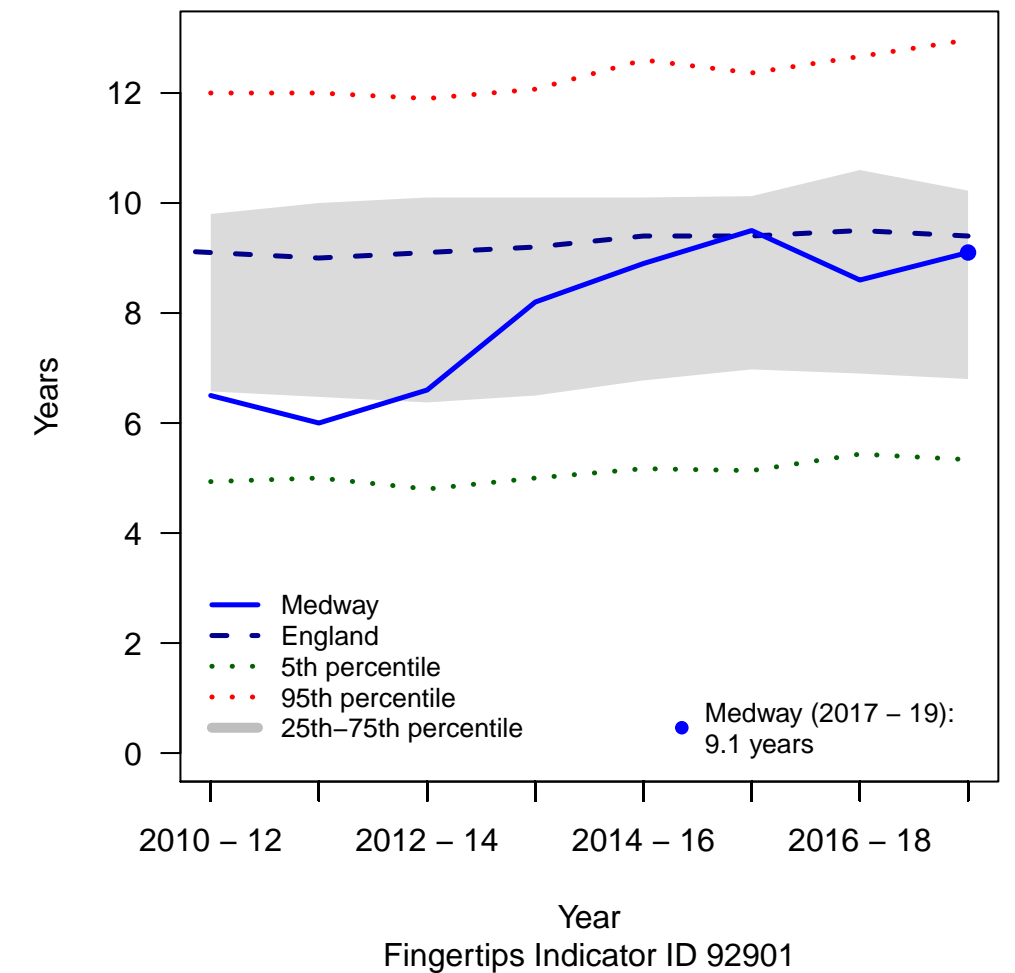
IND505: Not in Education, Employment or Training



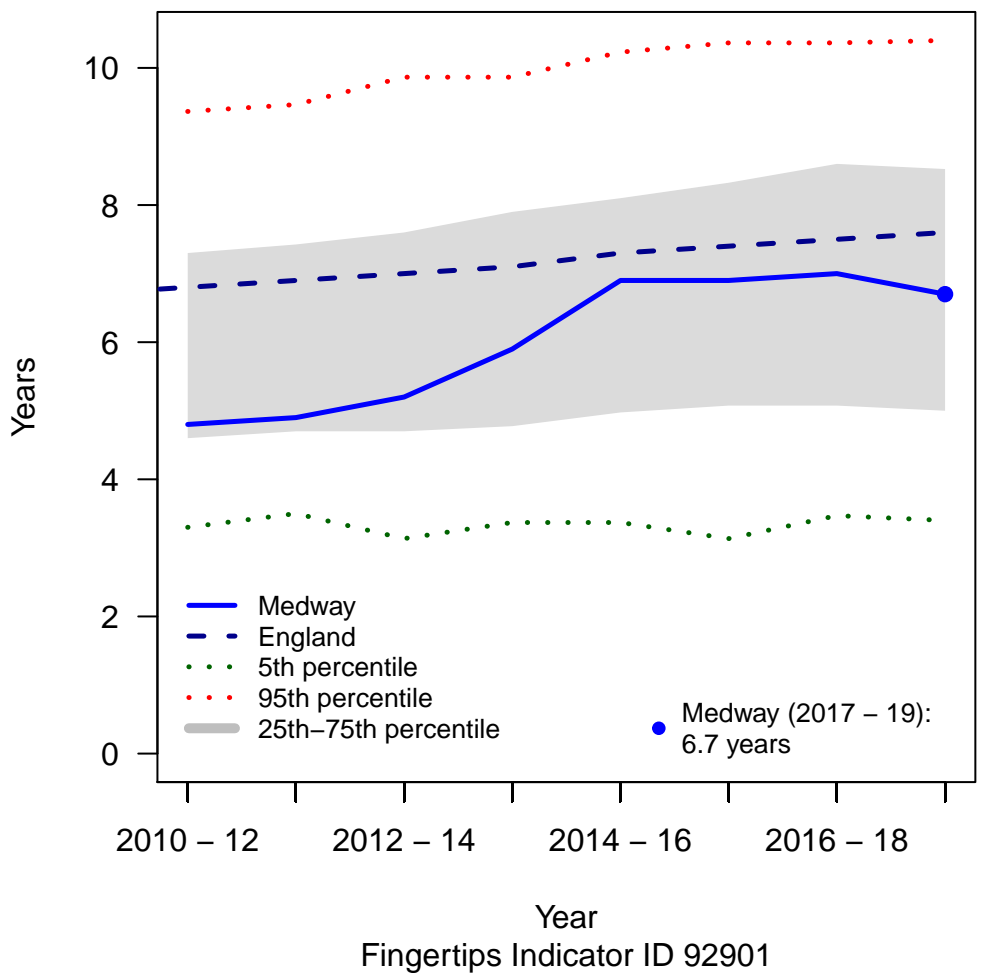
IND507: Socio-economic gap in current smokers (18-64)



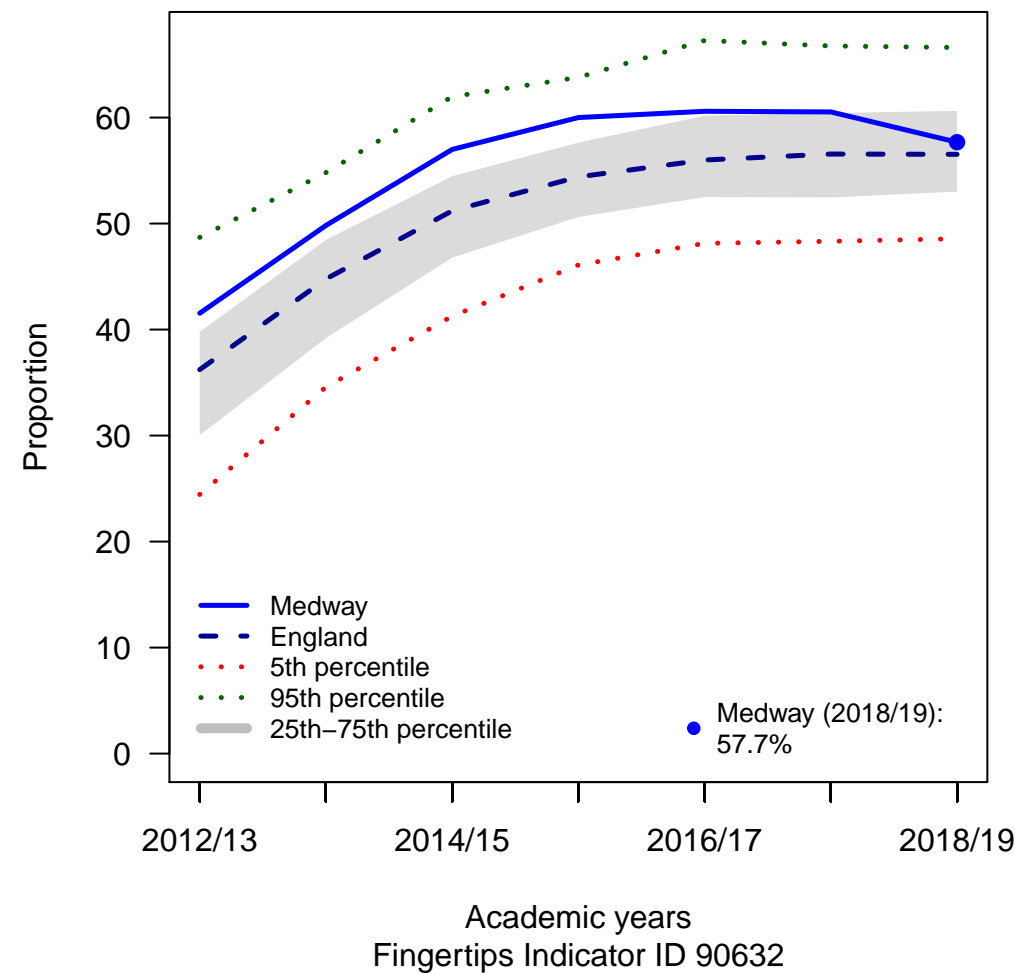
IND508: Inequality in life expectancy at birth (Male)



IND509: Inequality in life expectancy at birth (Female)



IND510: School readiness in children receiving free school meals



NOTES

IND505: Not in Education, Employment or Training

Percentage of 16–17 year olds not in education, employment or training (NEET) or whose activity is not known

IND507: Socio–economic gap in current smokers (18–64)

Smoking prevalence in adults (age 18–64 years) – gap between current smokers in routine and manual occupations and other occupations

IND508: Inequality in life expectancy at birth (Male)

The slope index of inequality in life expectancy at birth (Male), which represents the absolute difference in life expectancy across the social gradient from most to least deprived.

IND509: Inequality in life expectancy at birth (Female)

The slope index of inequality in life expectancy at birth (Female), which represents the absolute difference in life expectancy across the social gradient from most to least deprived.

IND510: School readiness in children receiving free school meals

Children with free school meal status defined as having reached a good level of development at the end of the early years foundation stage (Reception) as a percentage of all eligible children with free school meal status.