

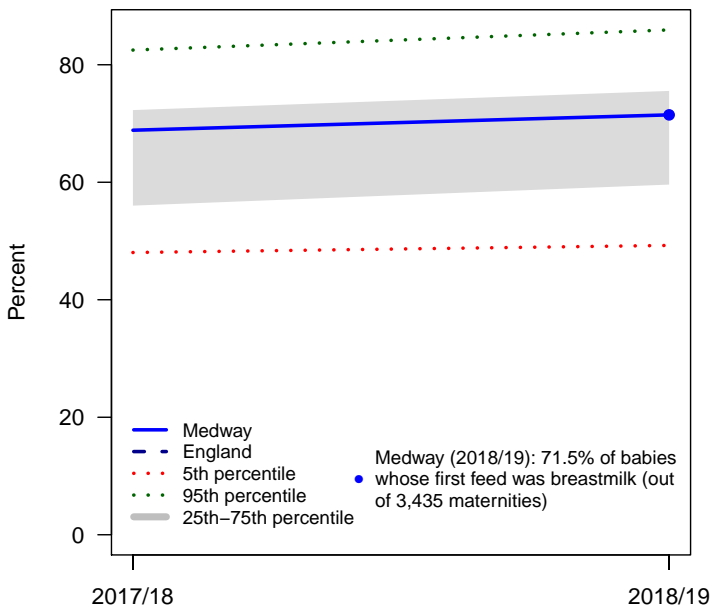
Joint Health and Wellbeing Strategy indicators

October 2020

Theme 1

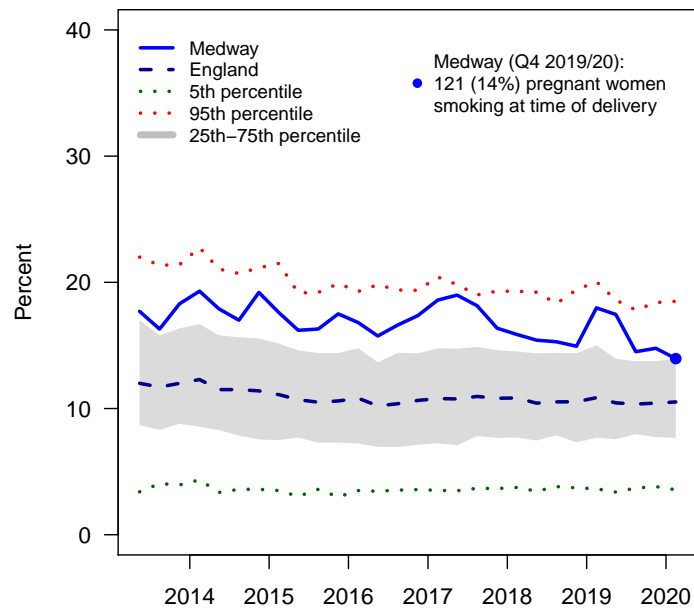
Give every child a good start

IND104: Baby's first feed breastmilk



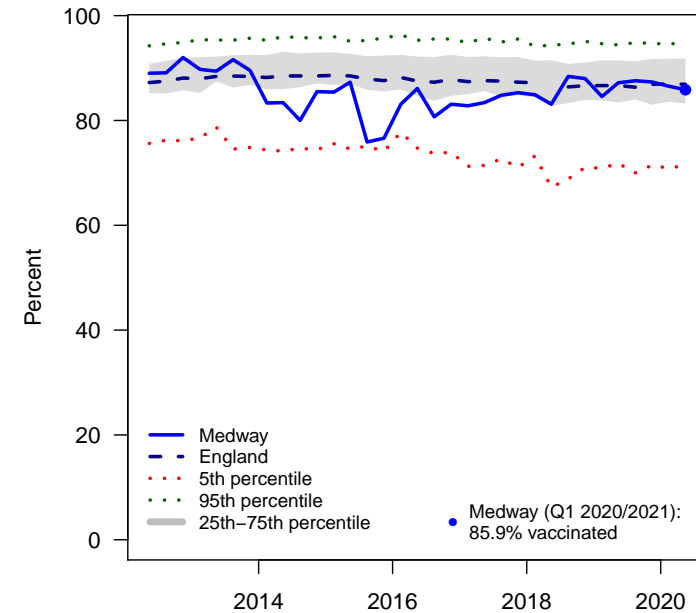
Quarter/Year
PHOF C05a

IND106: Smoking at the time of delivery



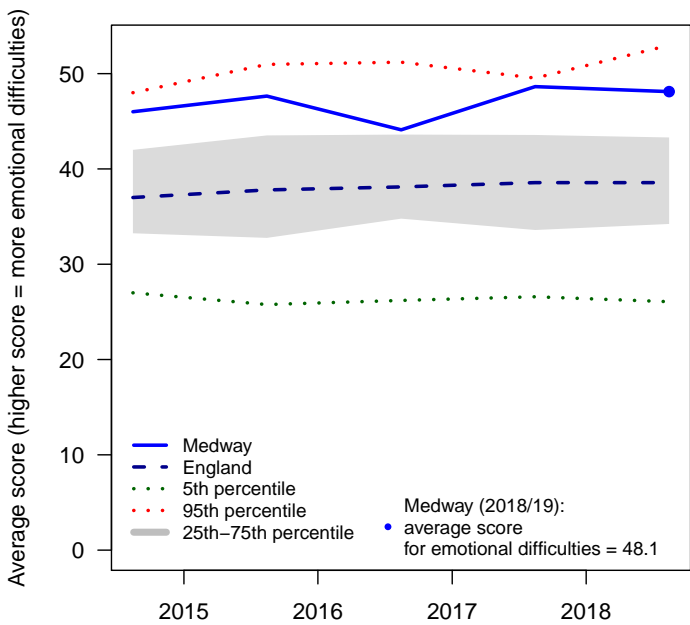
Quarter/Year
PHOF 2.03

IND127: Second MMR 5 years



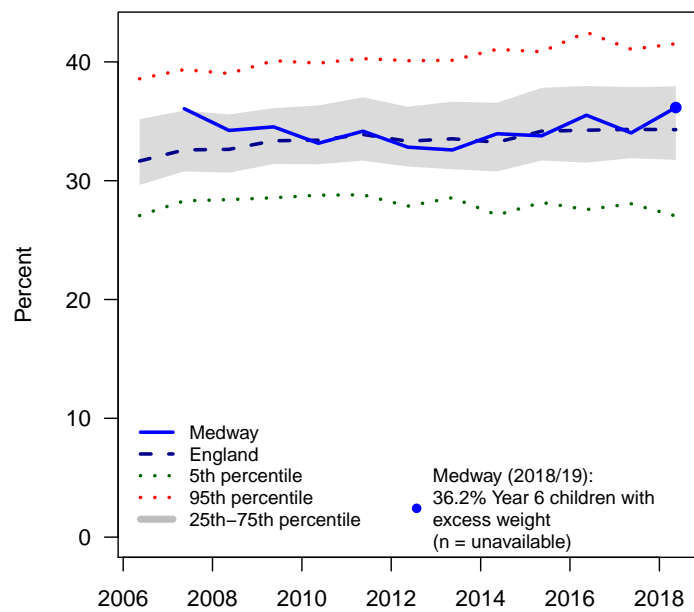
Quarter/Year
PHOF 3.03x

IND132: Emotional well-being of looked after children



Year
PHOF C12

IND137: Year 6: Prevalence of overweight (including obesity)



Academic year
PHOF C09b

NOTES

IND104: Baby's first feed breastmilk

Percentage of babies whose first feed is breastmilk

IND106: Smoking at the time of delivery

Rate of smoking at time of delivery per 100 maternities

IND127: Second MMR 5 years

MMR vaccination coverage for two doses (5 year olds)

IND132: Emotional well-being of looked after children

Average score for looked after children for whom a Strengths and Difficulties Questionnaire (SDQ) was completed. A higher score on the SDQ indicates more emotional difficulties. A score of 0–13 is considered normal, a score of 14–16 is considered borderline cause for concern and a score of 17 and over is a cause for concern.

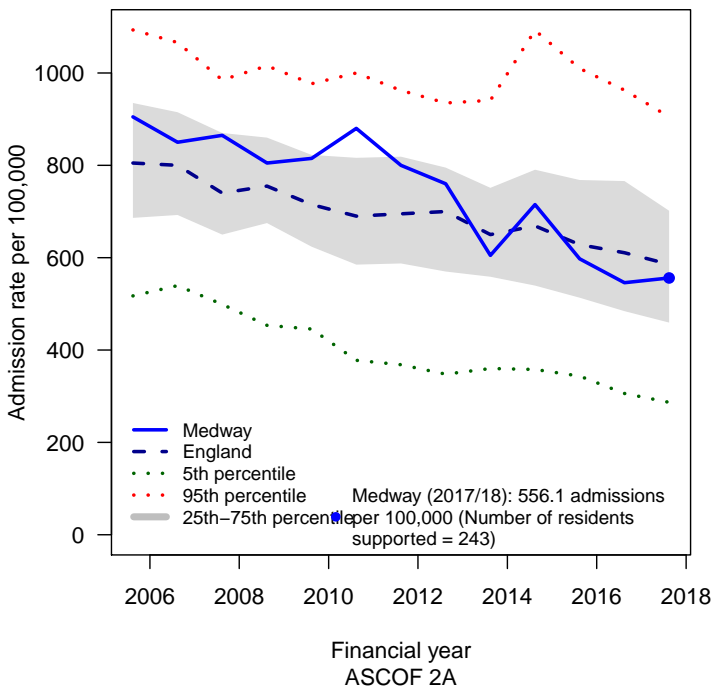
IND137: Year 6: Prevalence of overweight (including obesity)

Proportion of children aged 10–11 classified as overweight or obese. Children are classified as overweight (including obese) if their BMI is on or above the 85th centile of the British 1990 growth reference (UK90) according to age and sex

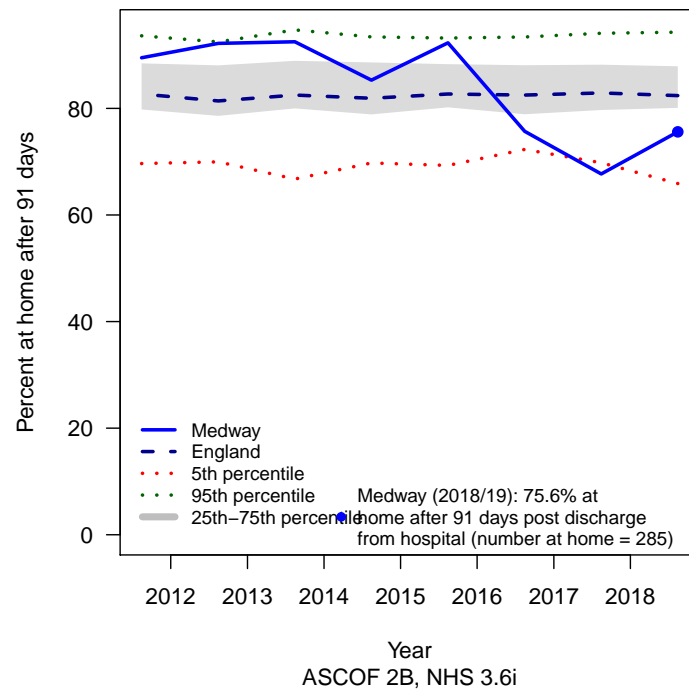
Theme 2

Enable our older population to live independently and well

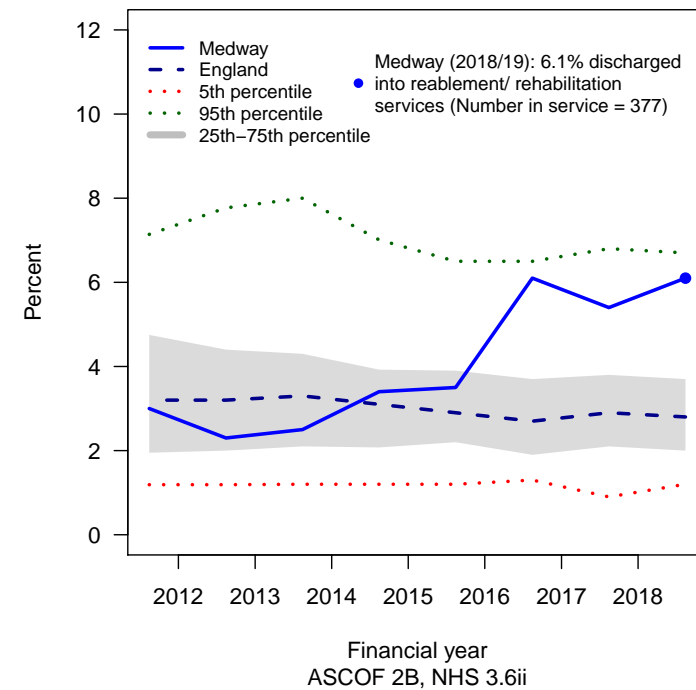
IND202: Care home admissions aged 65+



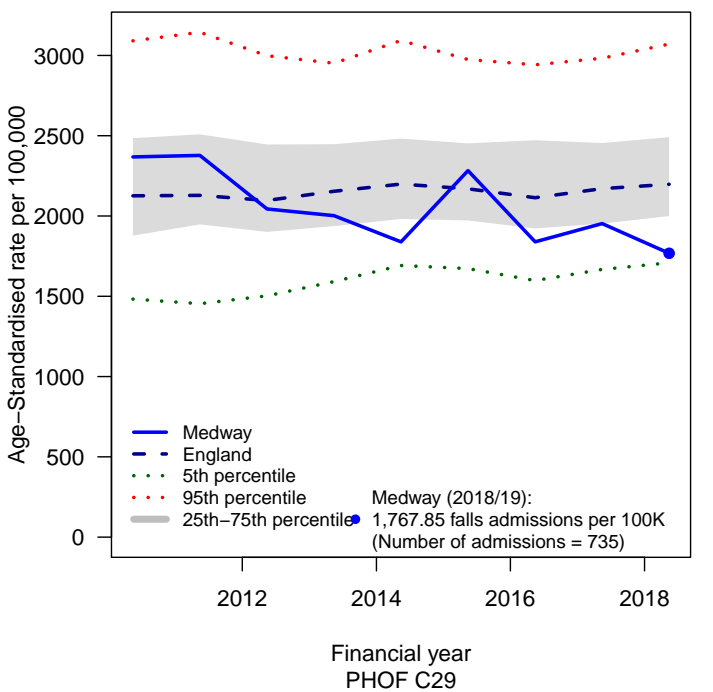
IND203: Reablement/rehab services success rate



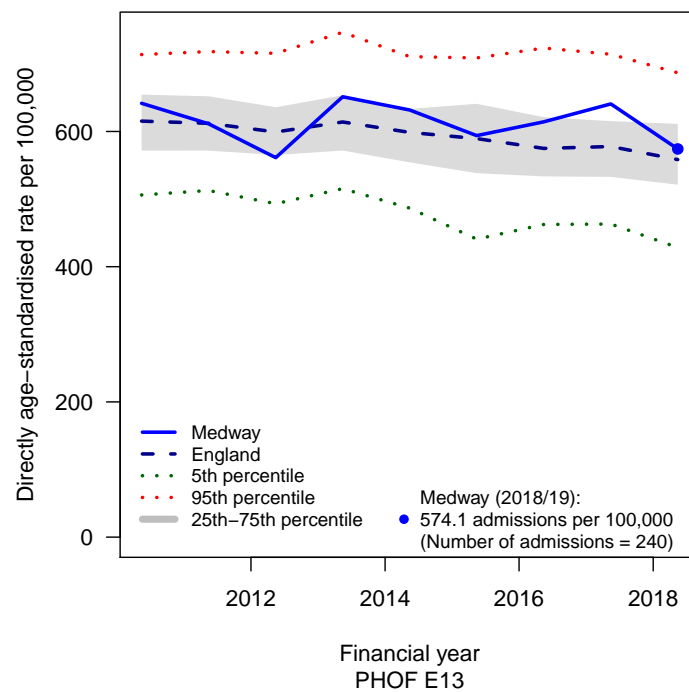
IND204: Discharged into reablement/rehab services



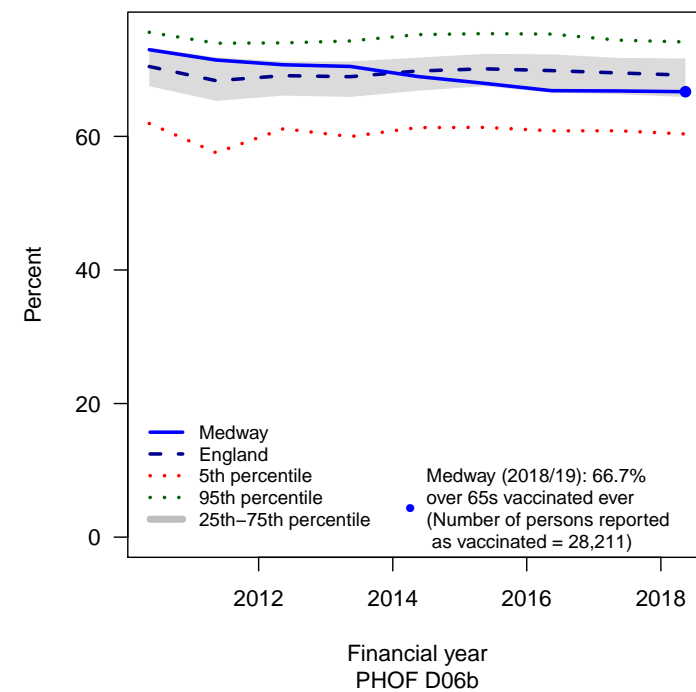
IND206: Emergency hospital admissions due to falls in people aged 65 a



IND207: Hip fractures in people aged 65 and over



IND209: Population vaccination coverage – PPV



NOTES

IND202: Care home admissions aged 65+

Permanent admissions to residential and nursing care homes (65+), per 100,000 population

IND203: Reablement/rehab services success rate

Percentage of older people (aged 65 and over) discharged from hospital into reablement/rehabilitation services, at home after 91 days

IND204: Discharged into reablement/rehab services

Percentage of older people (aged 65 and over) offered rehabilitation following discharge from acute or community hospital

IND206: Emergency hospital admissions due to falls in people aged 65 and over

Emergency hospital admissions for falls injuries in persons aged 65 and over, directly age standardised rate per 100,000

IND207: Hip fractures in people aged 65 and over

Emergency Hospital Admission for fractured neck of femur in persons aged 65 and over, directly age standardised rate per 100,000

IND209: Population vaccination coverage – PPV

These data describe pneumococcal polysaccharide vaccine (PPV) uptake for the survey year, for those aged 65 years and over

IND210: Population vaccination coverage – Flu (aged 65+)

Flu vaccine uptake (%) in adults aged 65 and over, who received the flu vaccination between 1st September to the end of February in a primary care setting (GPs) The February collection has been adopted for our end of season figures going forwards to take into account data returning from outside the practice and later in-practice vaccinations

IND211: Population vaccination coverage – Flu (at risk individuals)

Flu vaccine uptake (%) in at risk individuals aged 6 months to 65 years (excluding pregnant women), who received the flu vaccination between 1st September to the end of February in a primary care setting (GPs). The February collection has been adopted for our end of season figures going forwards to take into account data returning from outside the practice and later in-practice vaccinations

IND213: Estimated diagnosis rate people with dementia

Proportion of total population diagnosed with dementia as a percentage of estimated dementia prevalence according to NHS Outcomes Framework

IND214: Emergency hospital admissions due to falls in people aged 65 and over (females)

Emergency hospital admissions for falls injuries in persons aged 65 and over, directly age standardised rate per 100,000

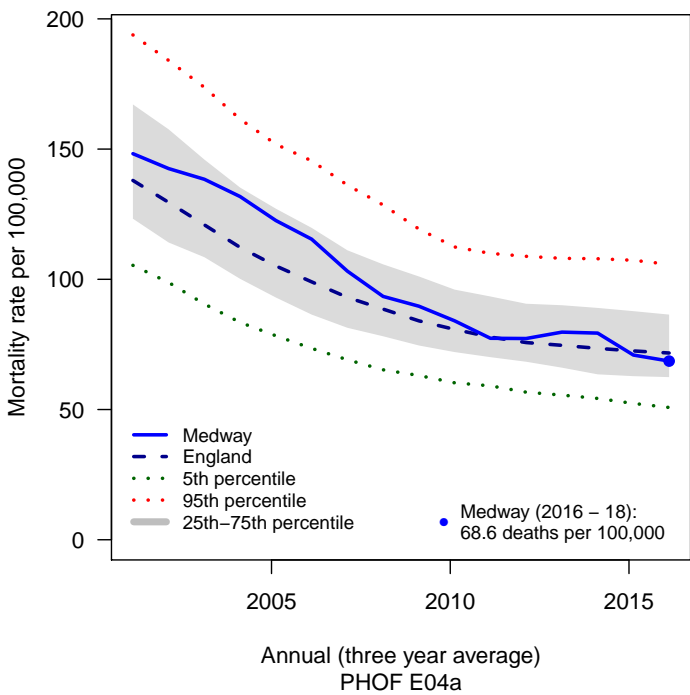
IND215: Emergency hospital admissions due to falls in people aged 65 and over (males)

Emergency hospital admissions for falls injuries in persons aged 65 and over, directly age standardised rate per 100,000

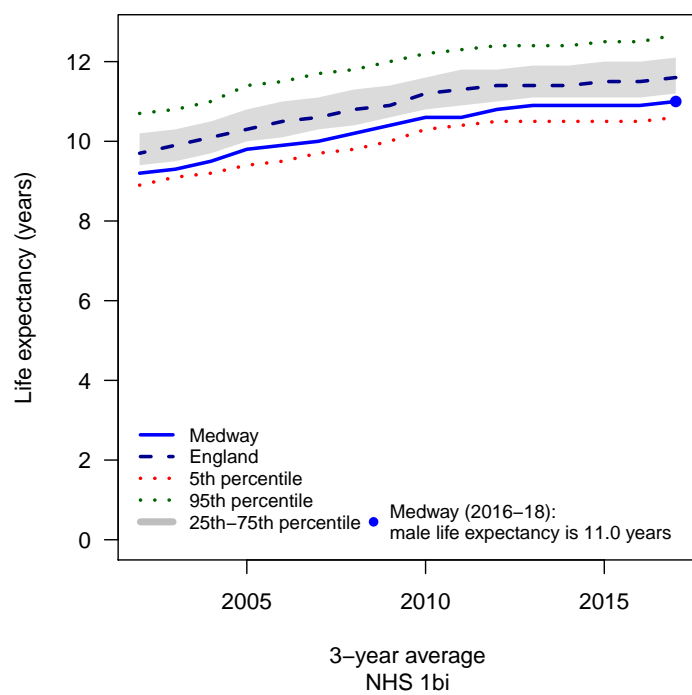
Theme 3

Prevent early death and increase years of healthy life

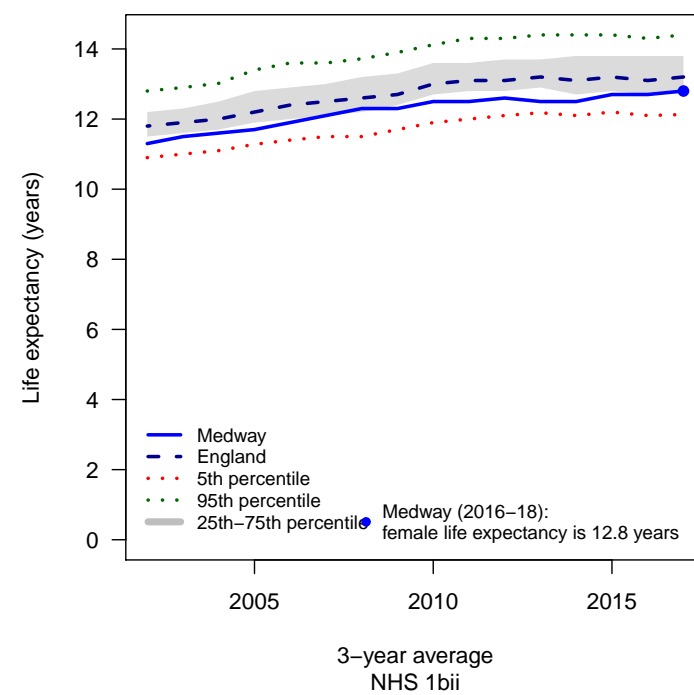
IND301: Under 75 mortality rate from all cardiovascular diseases



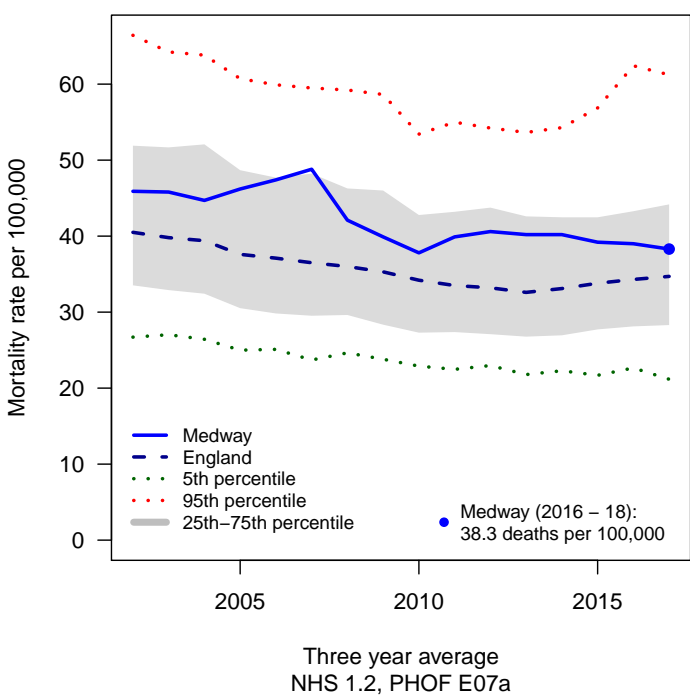
IND302: Life expectancy at 75 – Male



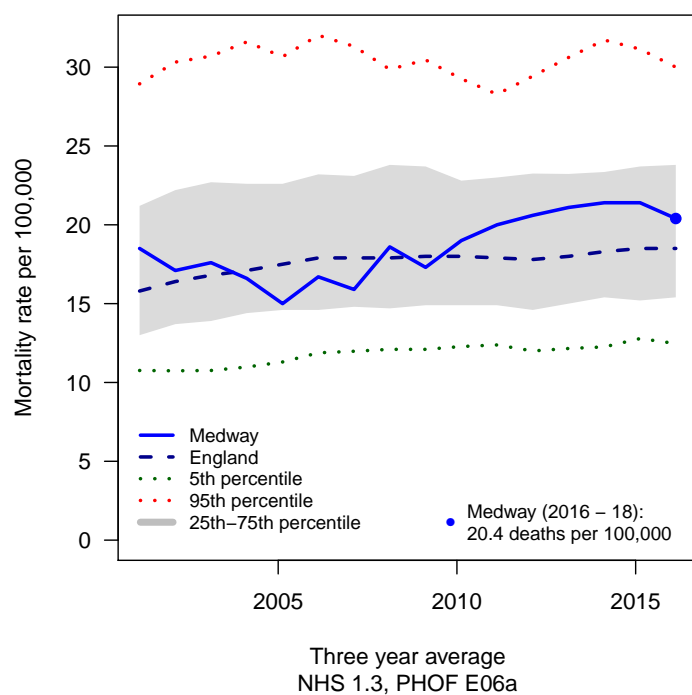
IND303: Life expectancy at 75 – Female



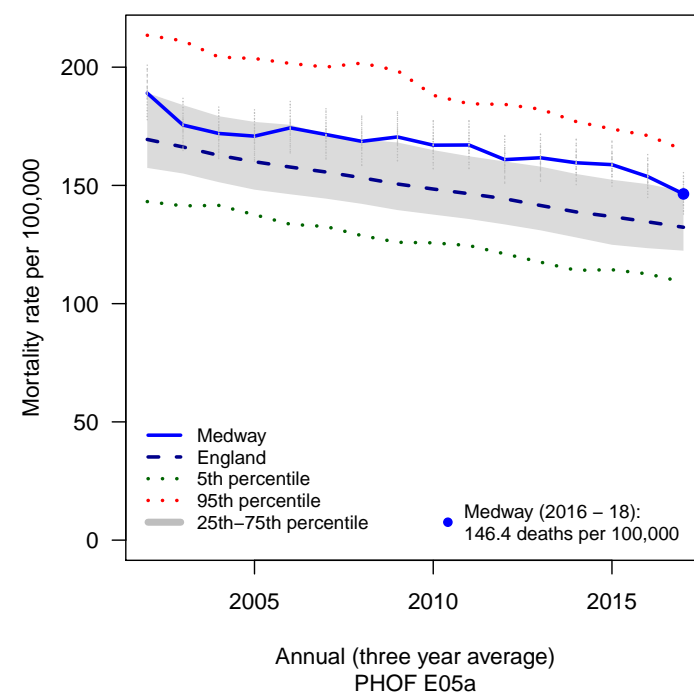
IND304: Under 75 mortality rate from respiratory disease



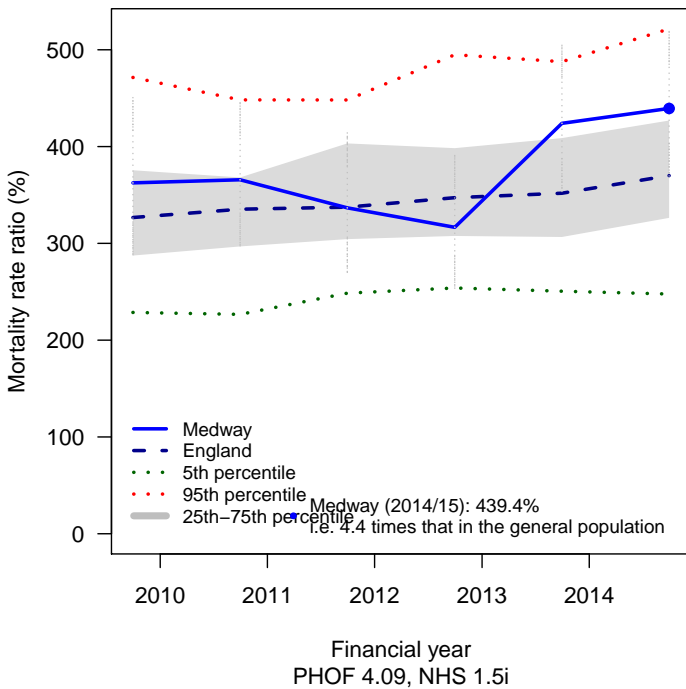
IND305: Under 75 mortality rate from liver disease



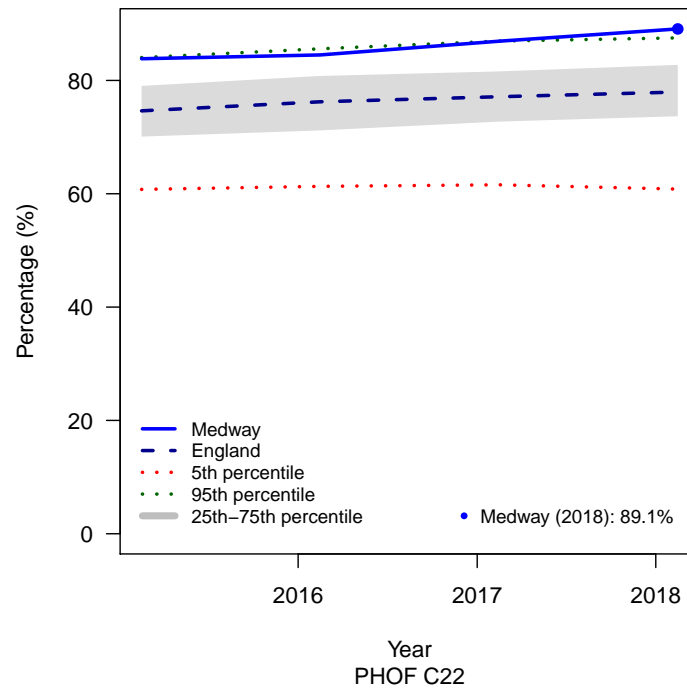
IND306: Cancer mortality rate (under 75)



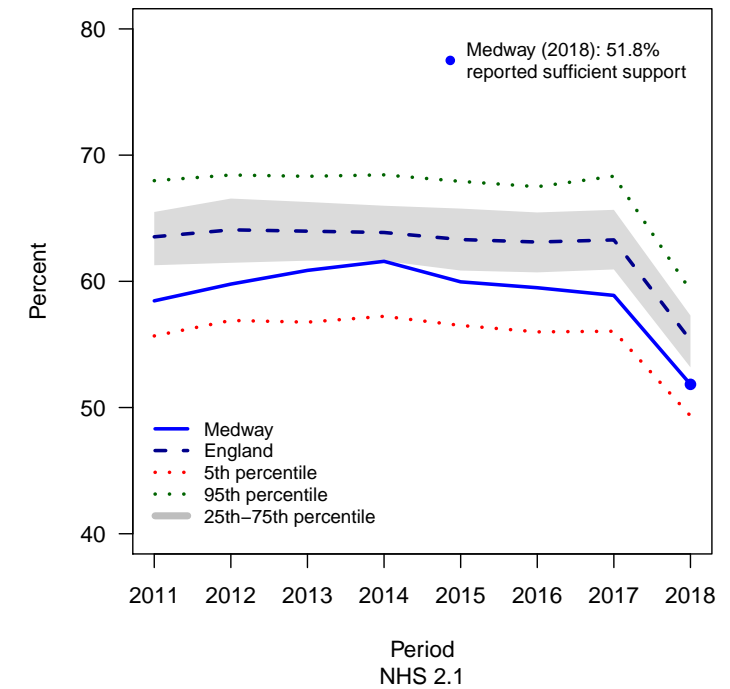
IND307: Serious mental health illness excess deaths



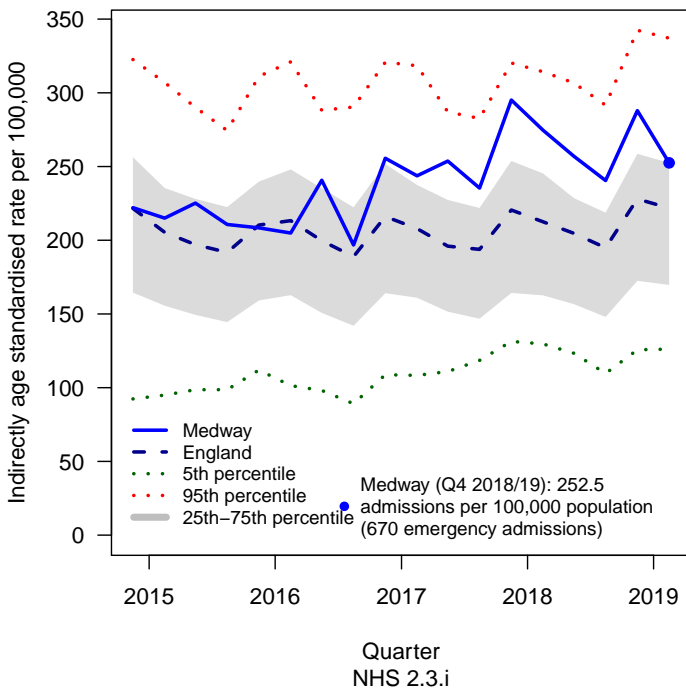
IND308: Estimated diabetes diagnosis rate



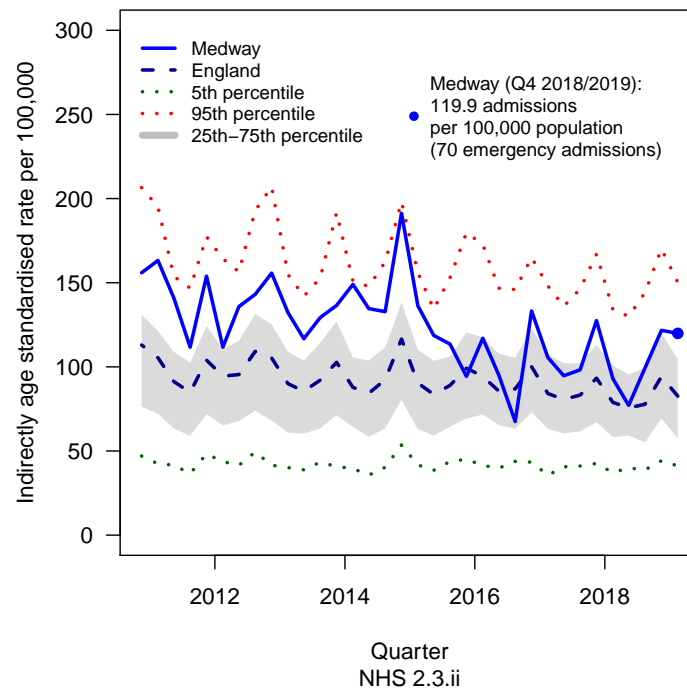
IND310: Long-term condition support



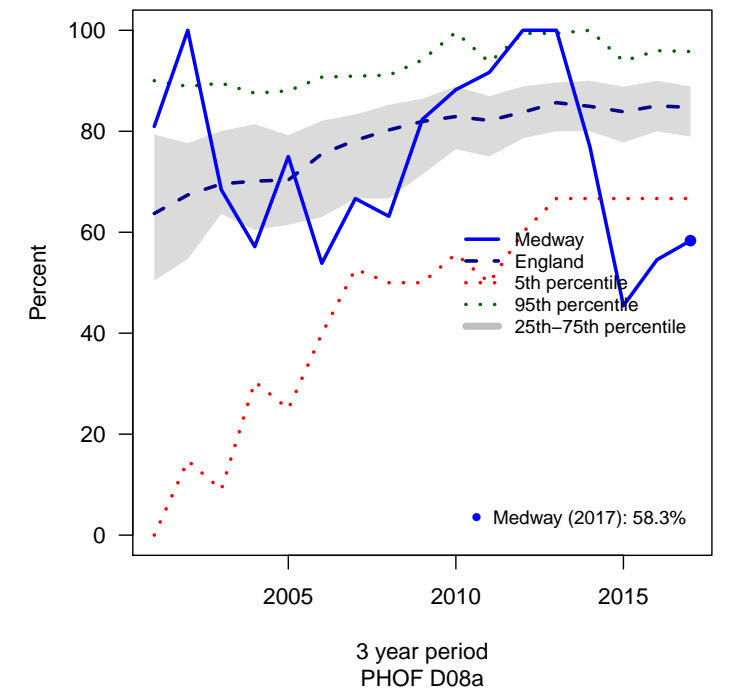
IND311: Chronic ambulatory care admissions



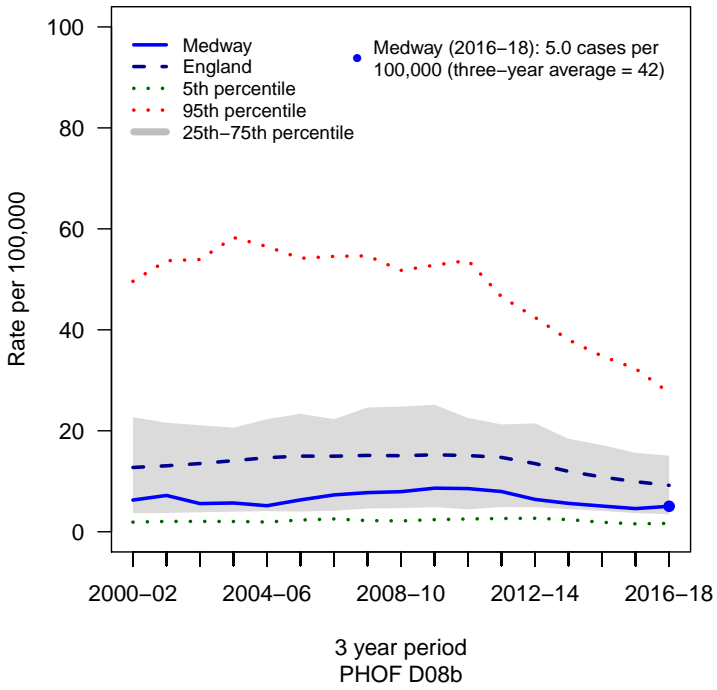
IND312: Asthma diabetes & epilepsy admissions (under 19s)



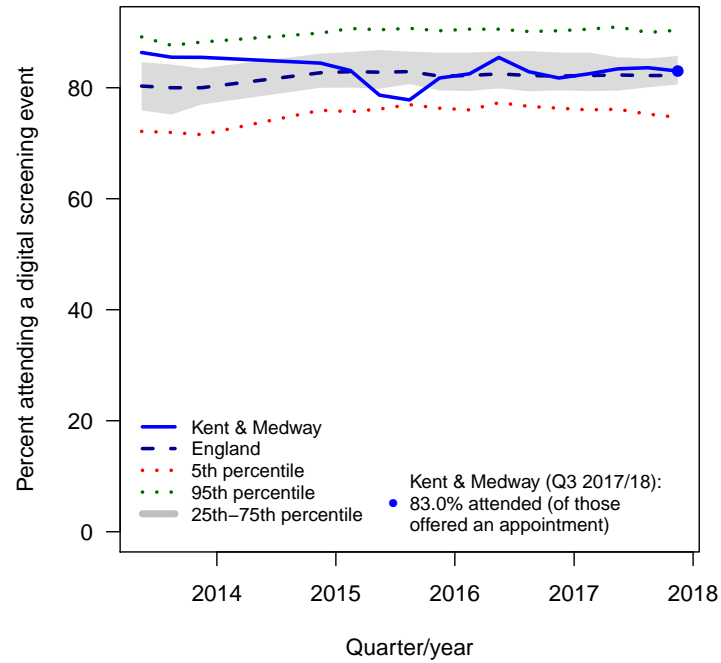
IND314: Percentage completing treatment for TB



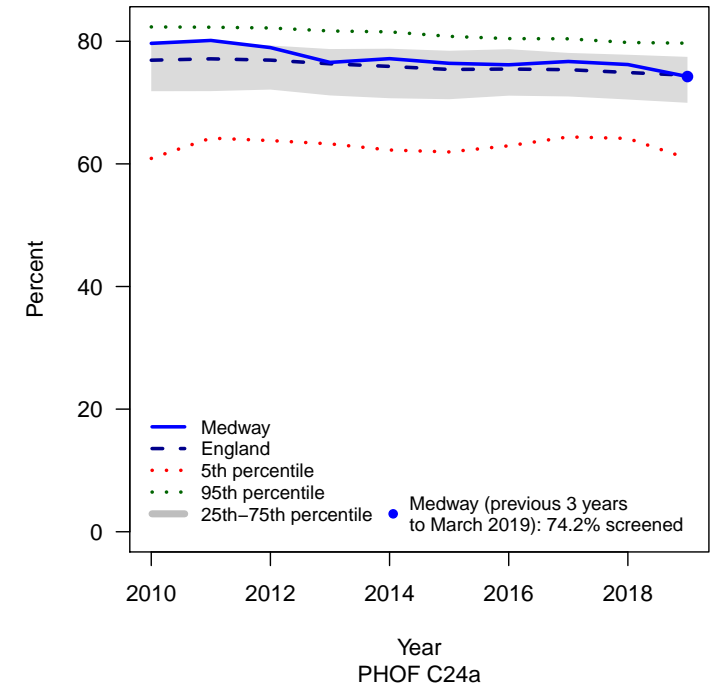
IND315: Rate of reported new cases of TB per year



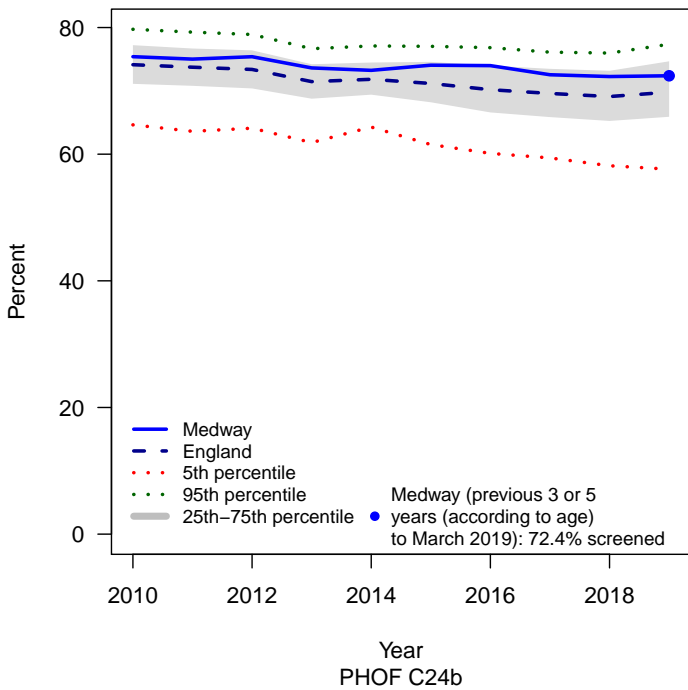
IND316: Diabetic retinopathy screening



IND501: Breast screening 53-70 years



IND502: Cervical screening 5 to 49 years



NOTES

IND301: Under 75 mortality rate from all cardiovascular diseases

Age-standardised rate of mortality from all cardiovascular diseases (including heart disease and stroke) in persons less than 75 years per 100,000 population

IND302: Life expectancy at 75 – Male

Period life expectancy at age 75 for males

IND303: Life expectancy at 75 – Female

Period life expectancy at age 75 for females

IND304: Under 75 mortality rate from respiratory disease

Age-standardised rate of mortality from respiratory disease in persons less than 75 years per 100,000 population

IND305: Under 75 mortality rate from liver disease

Age-standardised rate of mortality from liver disease in persons less than 75 years per 100,000 population

IND306: Cancer mortality rate (under 75)

Age-standardised rate of mortality from all cancers in persons less than 75 years of age per 100,000 population

IND307: Serious mental health illness excess deaths

The ratio of the directly age standardised mortality rate for people aged 18 to 74 in contact with Secondary Mental Health Services to the directly age-standardised mortality rate for the general population of the same age expressed as a percentage.

IND308: Estimated diabetes diagnosis rate

The observed number of people with a formal diagnosis of diabetes as a proportion of the estimated number with diabetes

IND310: Long-term condition support

People aged 18 and over suffering from a longterm condition feeling supported to manage their condition

IND311: Chronic ambulatory care admissions

Unplanned hospitalisation for chronic ambulatory care sensitive conditions

IND312: Asthma diabetes & epilepsy admissions (under 19s)

Unplanned hospitalisation for asthma, diabetes and epilepsy (under 19)

IND314: Percentage completing treatment for TB

The percentage of drug susceptible people completing treatment for tuberculosis within 12 months prior to 31st December, of all those who were notified the previous year.

IND315: Rate of reported new cases of TB per year

The three-year average number of reported new cases per year (based on case notification) per 100,000 population

IND316: Diabetic retinopathy screening

The percentage of those offered screening for diabetic eye screening who attend a digital screening event

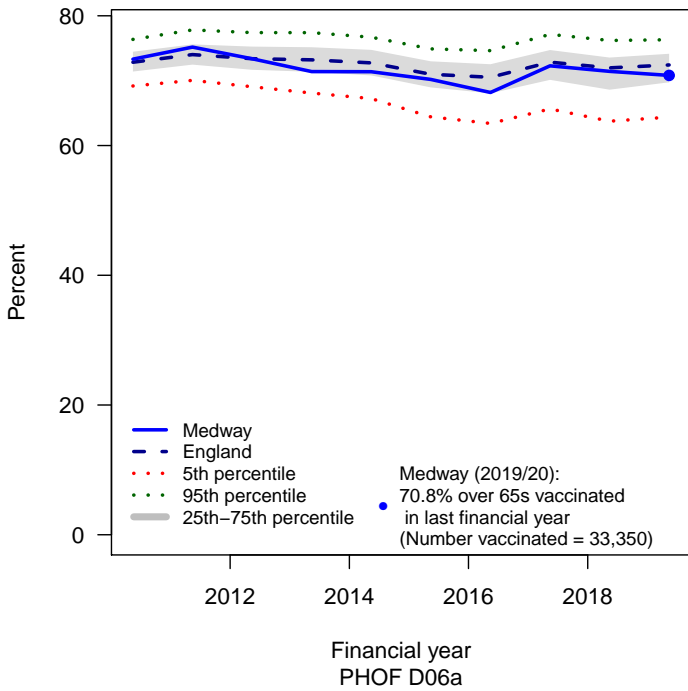
IND501: Breast screening 53–70 years

The percentage of women in the resident population eligible for breast screening who were screened adequately within the previous three years on 31 March

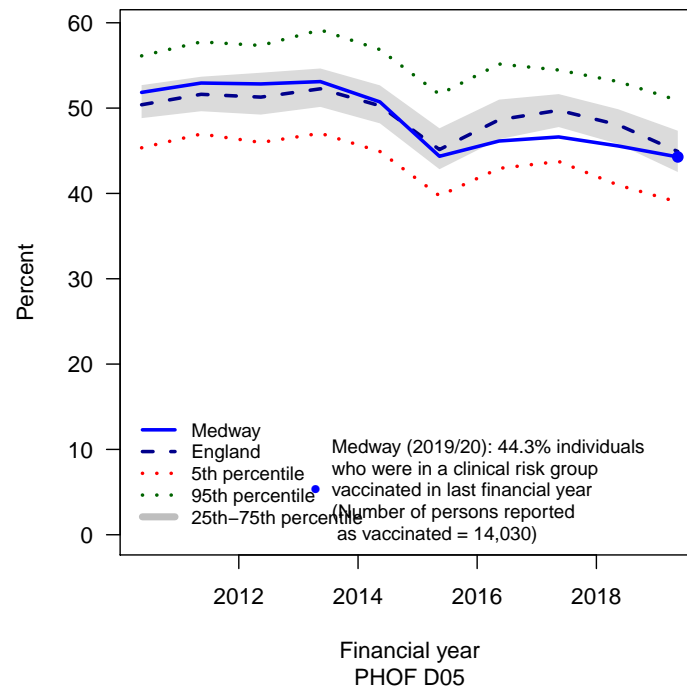
IND502: Cervical screening 5 to 49 years

The proportion of women in the resident population eligible for cervical screening aged 25 to 49 years at end of period reported who were screened adequately within the previous 3.5 years.

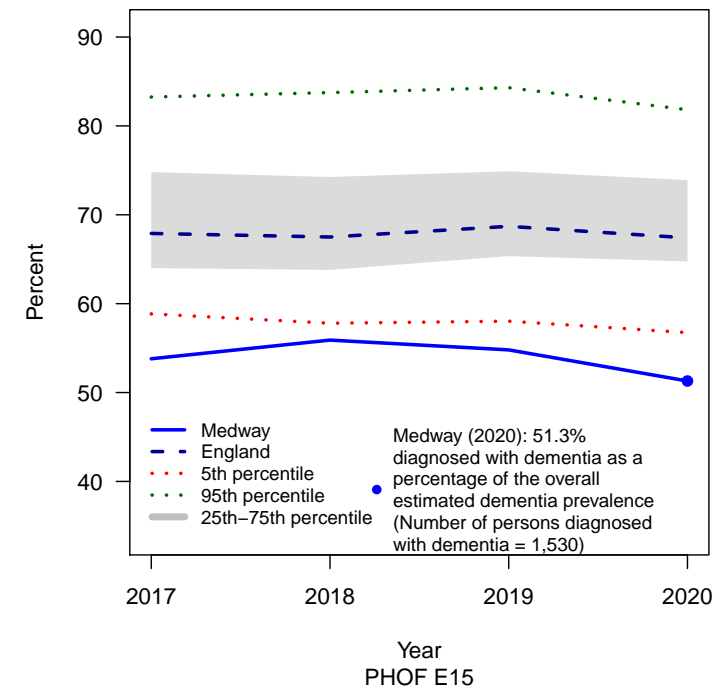
IND210: Population vaccination coverage – Flu (aged 65+)



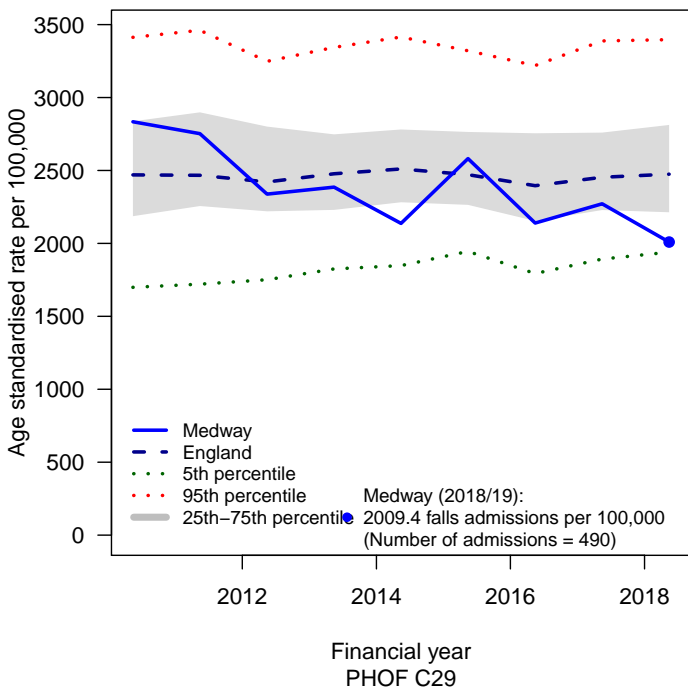
IND211: Population vaccination coverage – Flu (at risk individuals)



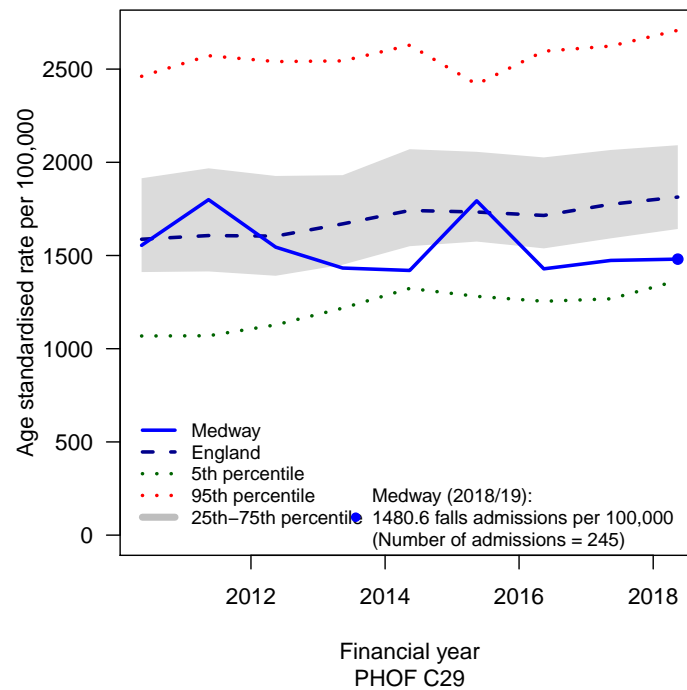
IND213: Estimated diagnosis rate people with dementia



IND214: Emergency hospital admissions due to falls in people aged and over (females)



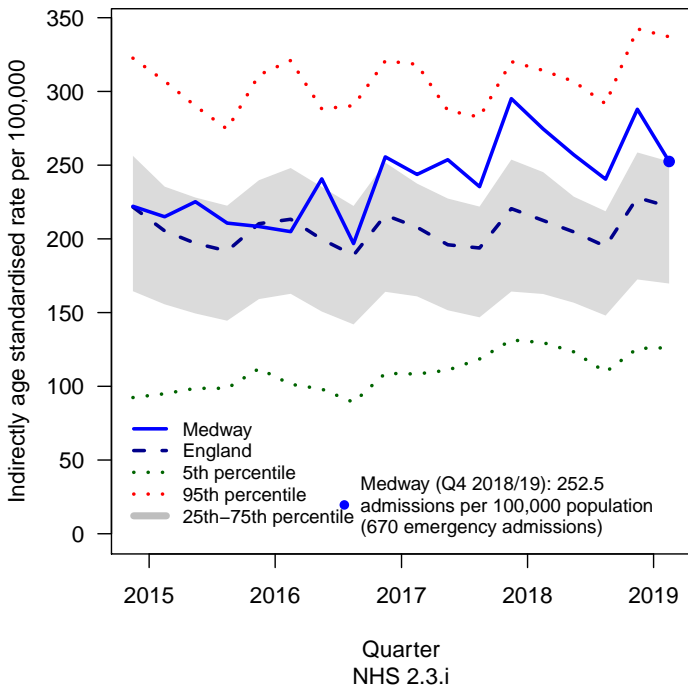
IND215: Emergency hospital admissions due to falls in people aged and over (males)



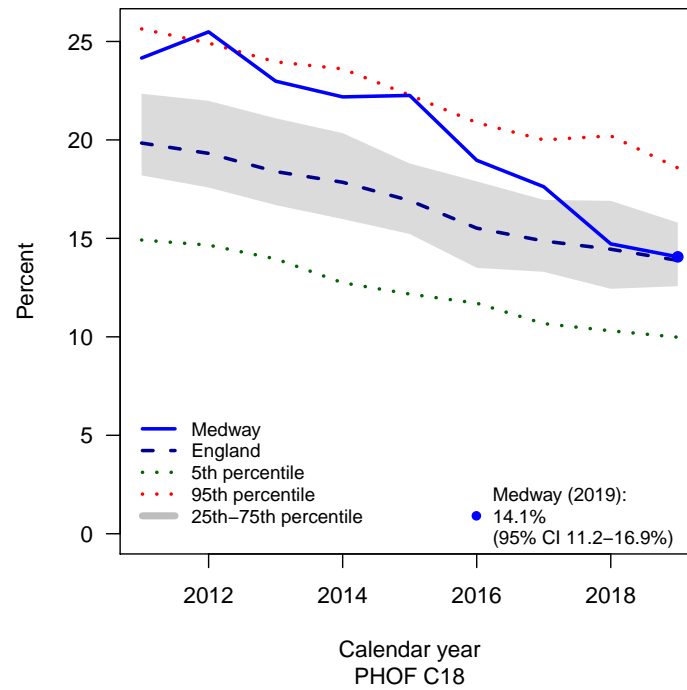
Theme 4

Improve mental and physical health and well-being

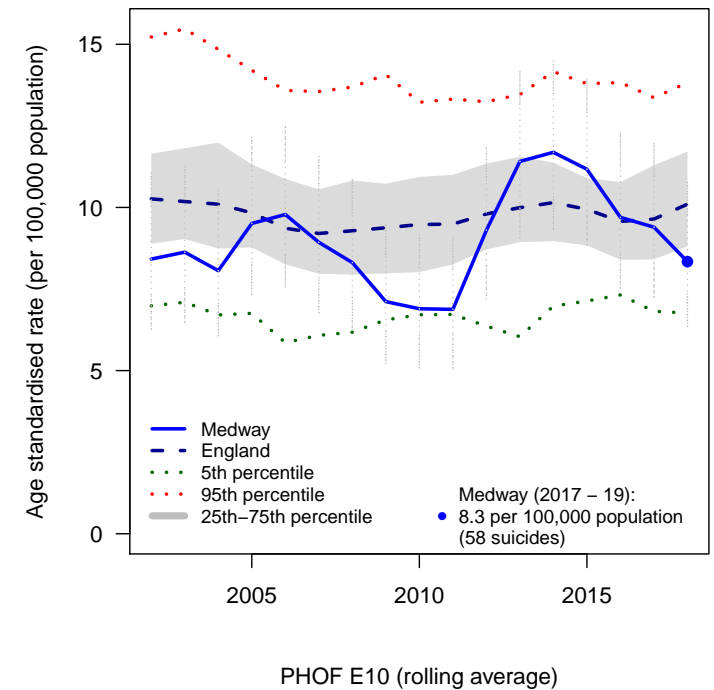
IND311: Chronic ambulatory care admissions



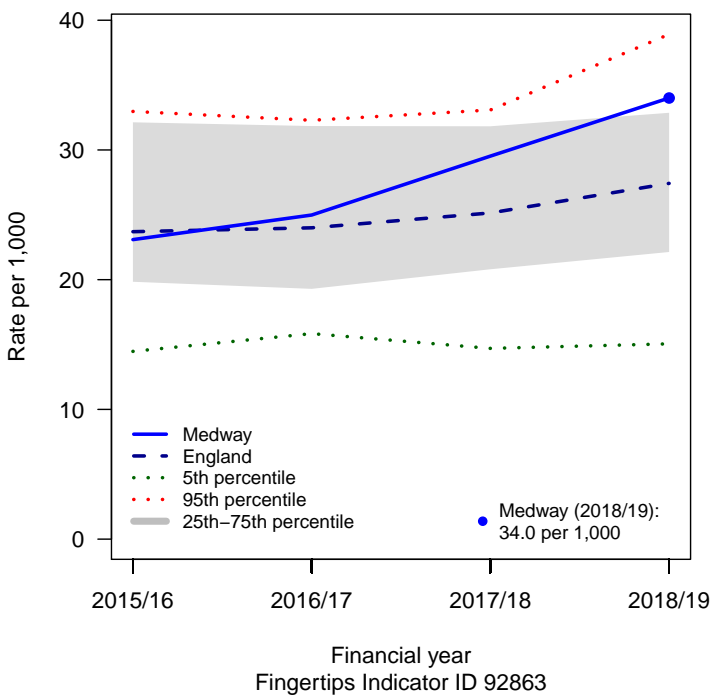
IND409: Smoking % (18+)



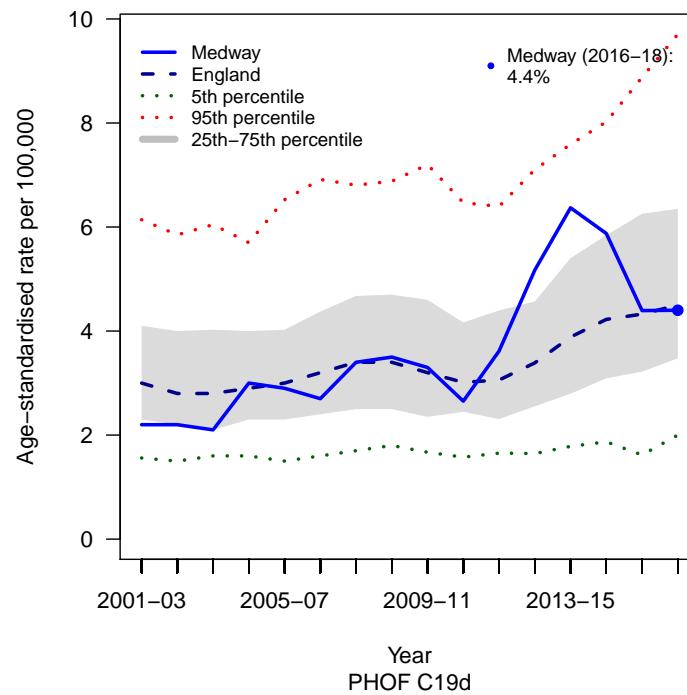
IND430: Suicide rate (persons)



IND435: Domestic abuse-related incidents and crimes



IND436: Deaths from drug misuse



NOTES

IND311: Chronic ambulatory care admissions

Unplanned hospitalisation for chronic ambulatory care sensitive conditions

IND409: Smoking % (18+)

Prevalence of smoking among people aged 18 years and over – persons aged 18+ who are self-reported smokers in the Annual Population Survey

IND430: Suicide rate (persons)

Age-standardised mortality rate from suicide and injury of undetermined intent per 100,000 population

IND435: Domestic abuse-related incidents and crimes

Domestic abuse-related incidents and crimes recorded by the police, crude rates per 1,000

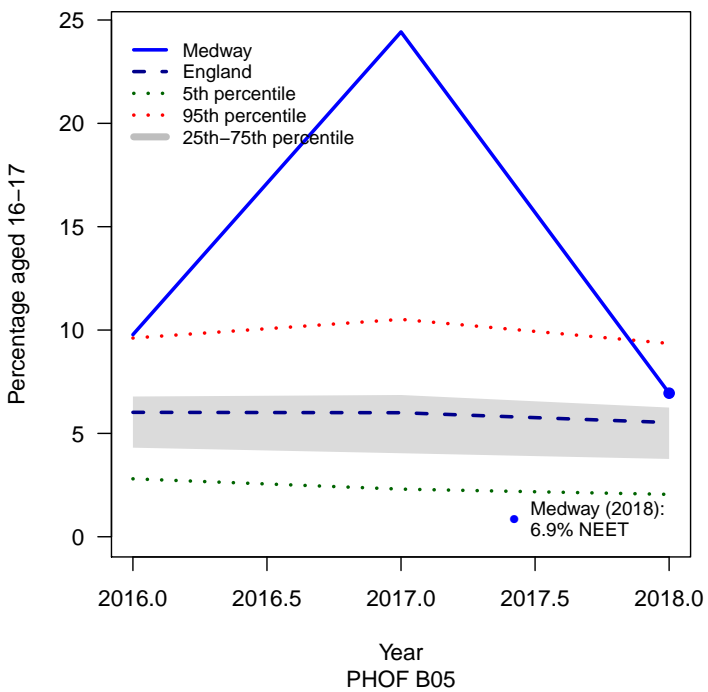
IND436: Deaths from drug misuse

Age-standardised mortality rate from drug misuse per 100,000 population

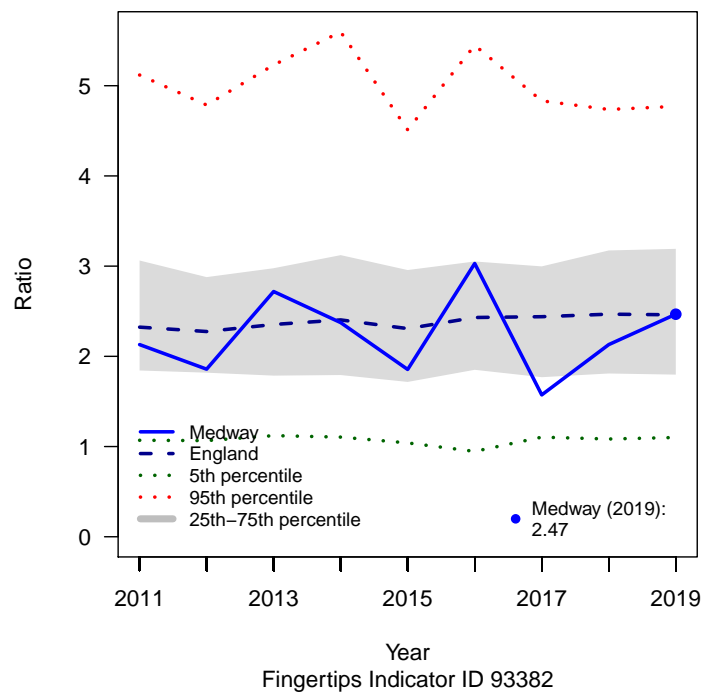
Theme 5

Reduce health inequalities

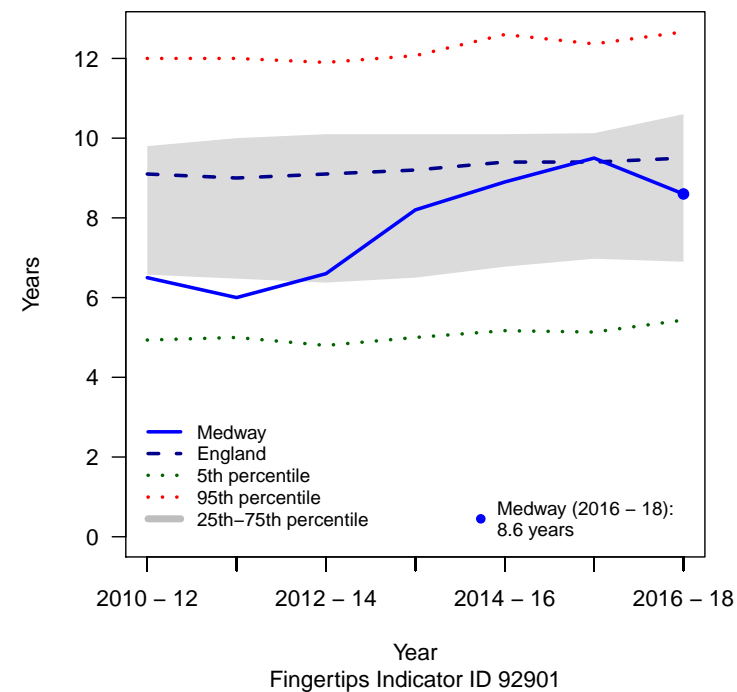
IND505: Not in Education, Employment or Training



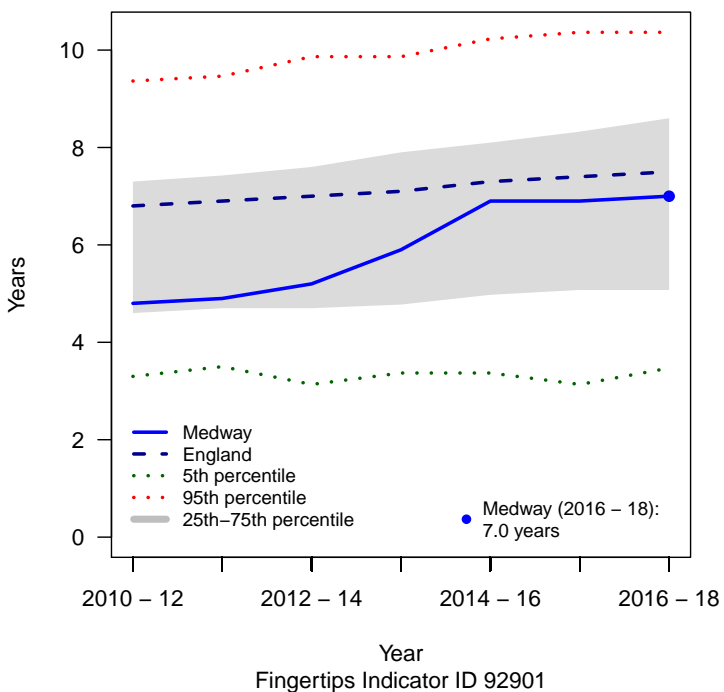
IND507: Socio-economic in current smokers (18-64)



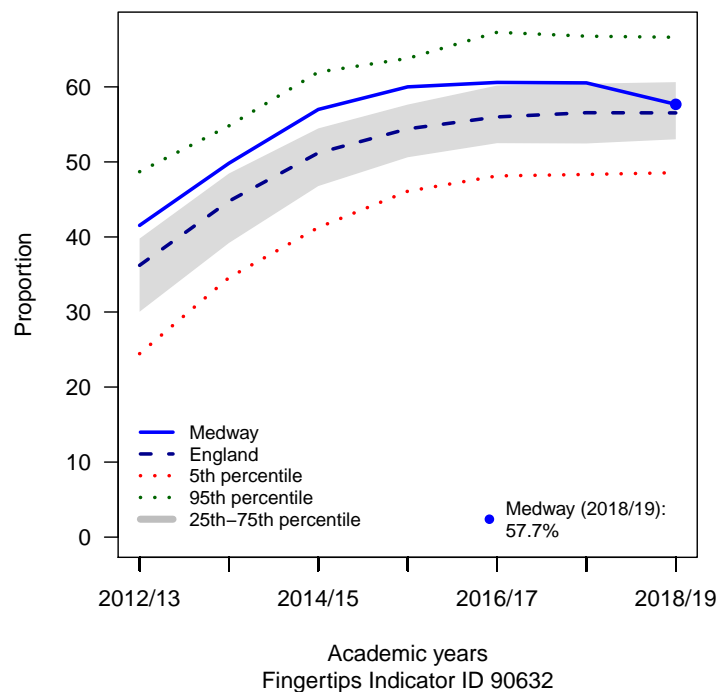
IND508: Inequality in life expectancy at birth (Male)



IND509: Inequality in life expectancy at birth (Female)



IND510: School readiness in children receiving free school meals



NOTES

IND505: Not in Education, Employment or Training

Percentage of 16–17 year olds not in education, employment or training (NEET) or whose activity is not known

IND507: Socio-economic gap in current smokers (18–64)

Smoking prevalence in adults (age 18–64 years) – gap between current smokers in routine and manual occupations and other occupations

IND508: Inequality in life expectancy at birth (Male)

The slope index of inequality in life expectancy at birth (Male), which represents the absolute difference in life expectancy across the social gradient from most to least deprived.

IND509: Inequality in life expectancy at birth (Female)

The slope index of inequality in life expectancy at birth (Female), which represents the absolute difference in life expectancy across the social gradient from most to least deprived.

IND510: School readiness in children receiving free school meals

Children with free school meal status defined as having reached a good level of development at the end of the early years foundation stage (Reception) as a percentage of all eligible children with free school meal status.