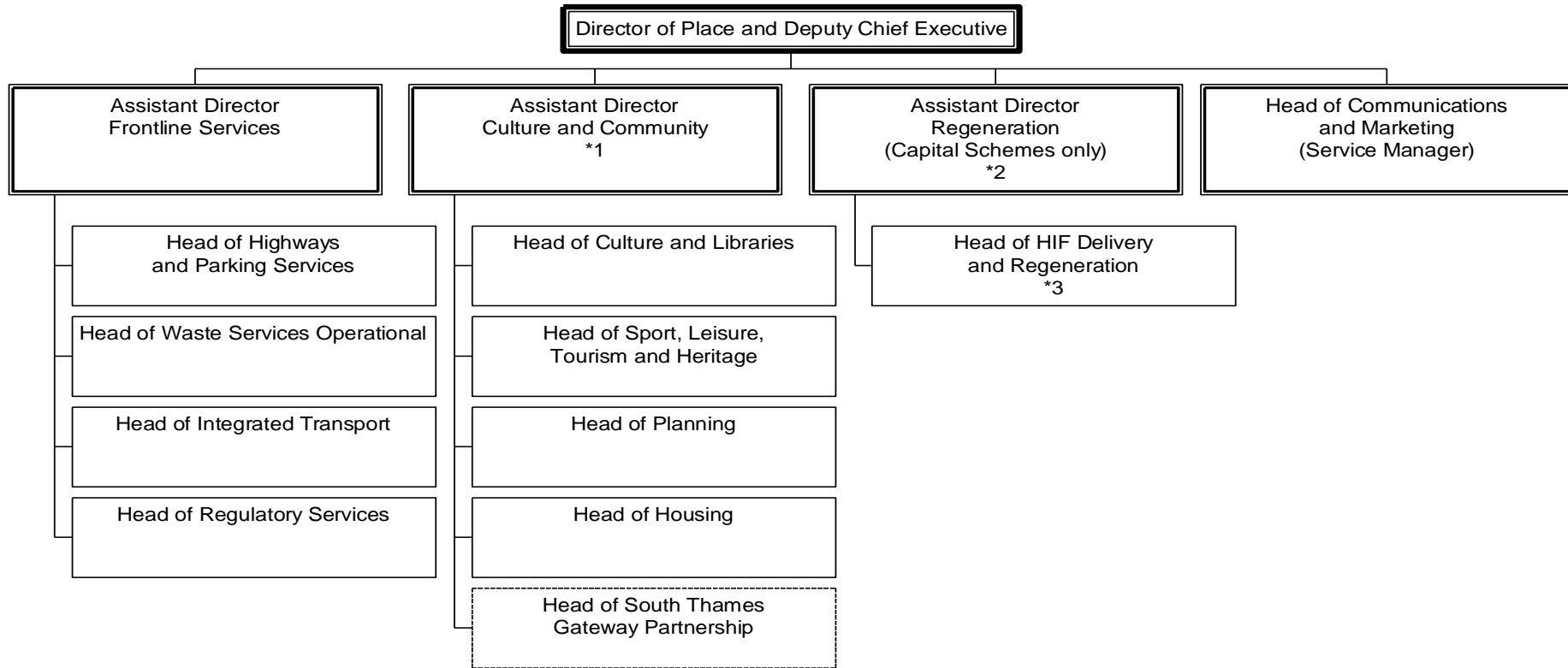


Proposed Regeneration, Culture and Environment Directorate Structure



Notes:

*1 – Also has responsibility for Economic Development (client function) and Skills, Employment and Adult Education

*2 – In addition to HIF, these Capital Regeneration Schemes include Innovation Park Medway, Strood Waterfront, Rochester Riverside and Chatham Place Making

*3 - Includes responsibility for Town Centres Capital Schemes, Greenspace Development and External Bidding