

Pharmaceutical Needs Assessment – NHS Medway CCG (DRAFT)



Supplementary data and maps
data correct as of November 2017

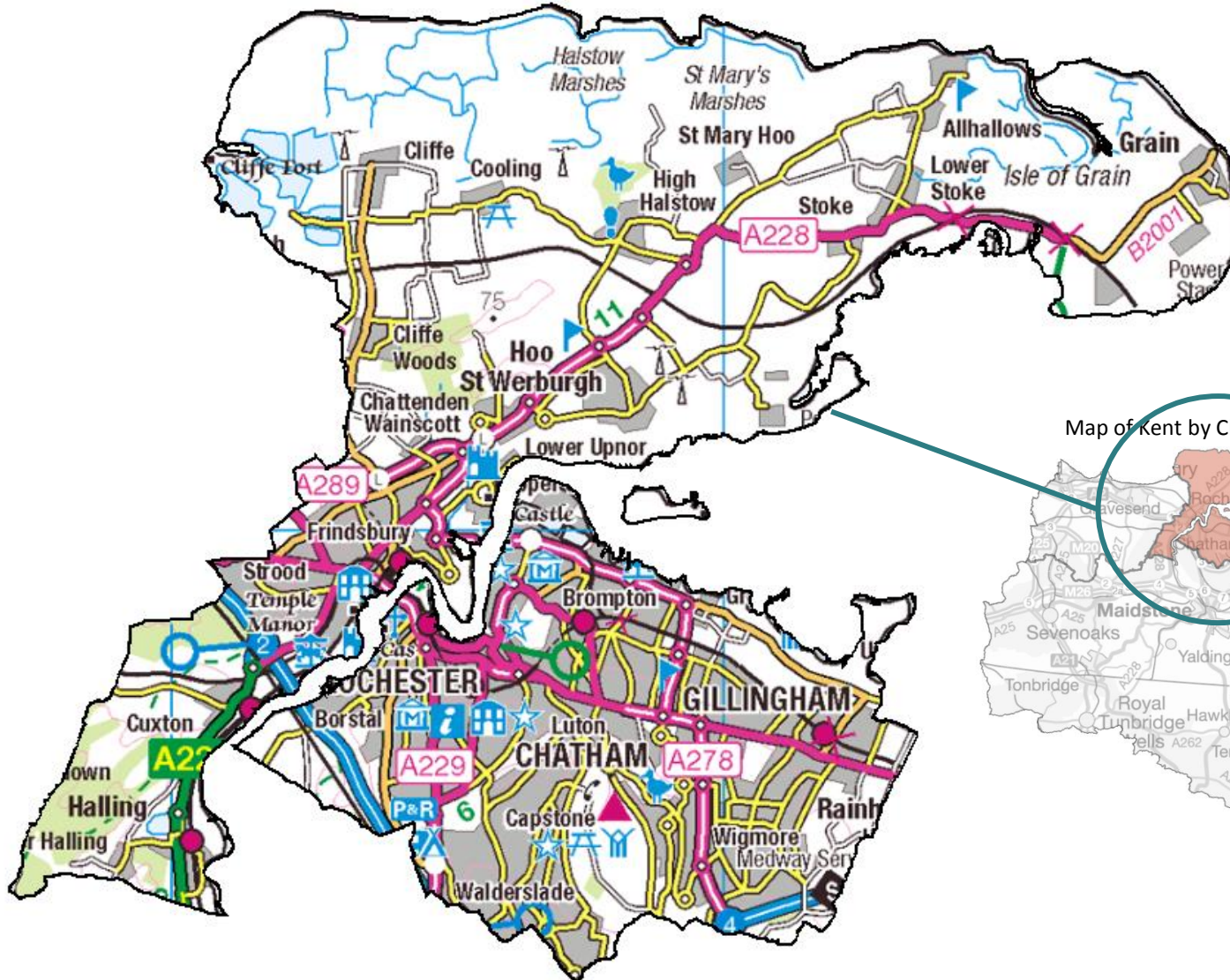


Produced by

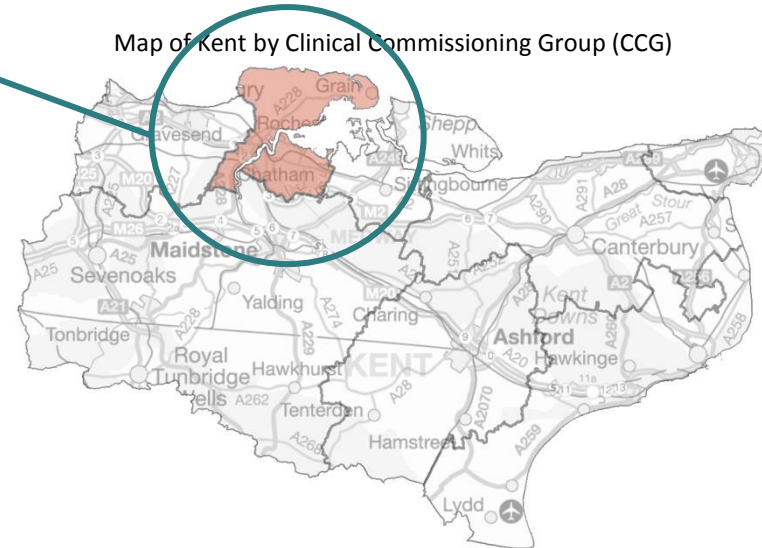
Cheryl Clennett, Consultant Pharmacist
Julian Barlow, Senior Public Health Intelligence Analyst
Matthew Pateman, Public Health Analyst
Lauren Liddell-Young, Public Health Information Officer

Version: 0.1 Draft
Last updated: November 2017

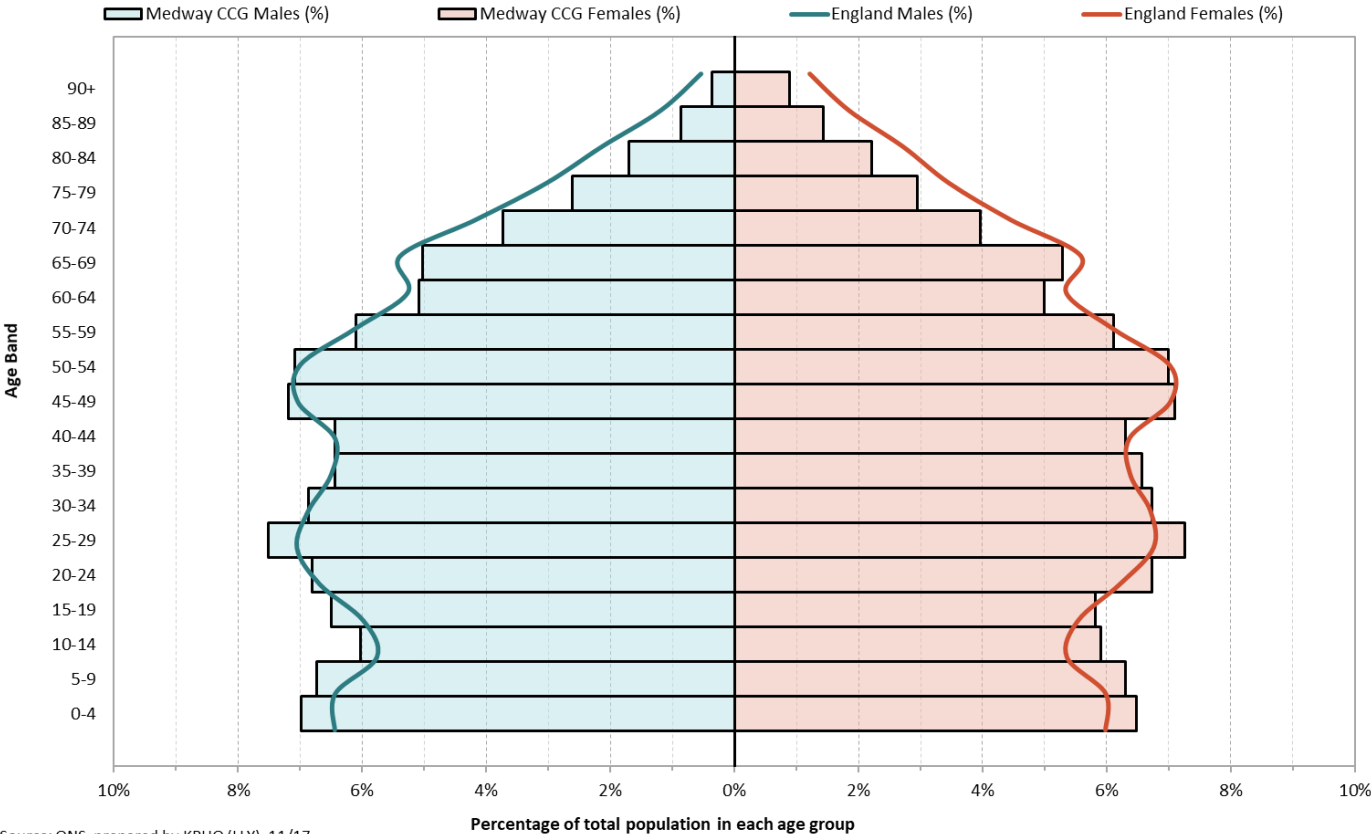
- [Orientation](#)
- [Current population](#)
- [Population density](#)
- [Population growth](#)
- [Ethnicity profile](#)
- [Index of multiple deprivation](#)
- [Location of pharmaceutical services](#)
- [Distance rings around community pharmacies](#)
- [Pharmacies providing medicines use review](#)
- [Pharmacies providing new medicines service](#)
- [Pharmacies and appliance contractors providing stoma customisation and appliance use reviews](#)
- [General practices](#)
- [NHS flu vaccination](#)



Map of Kent by Clinical Commissioning Group (CCG)



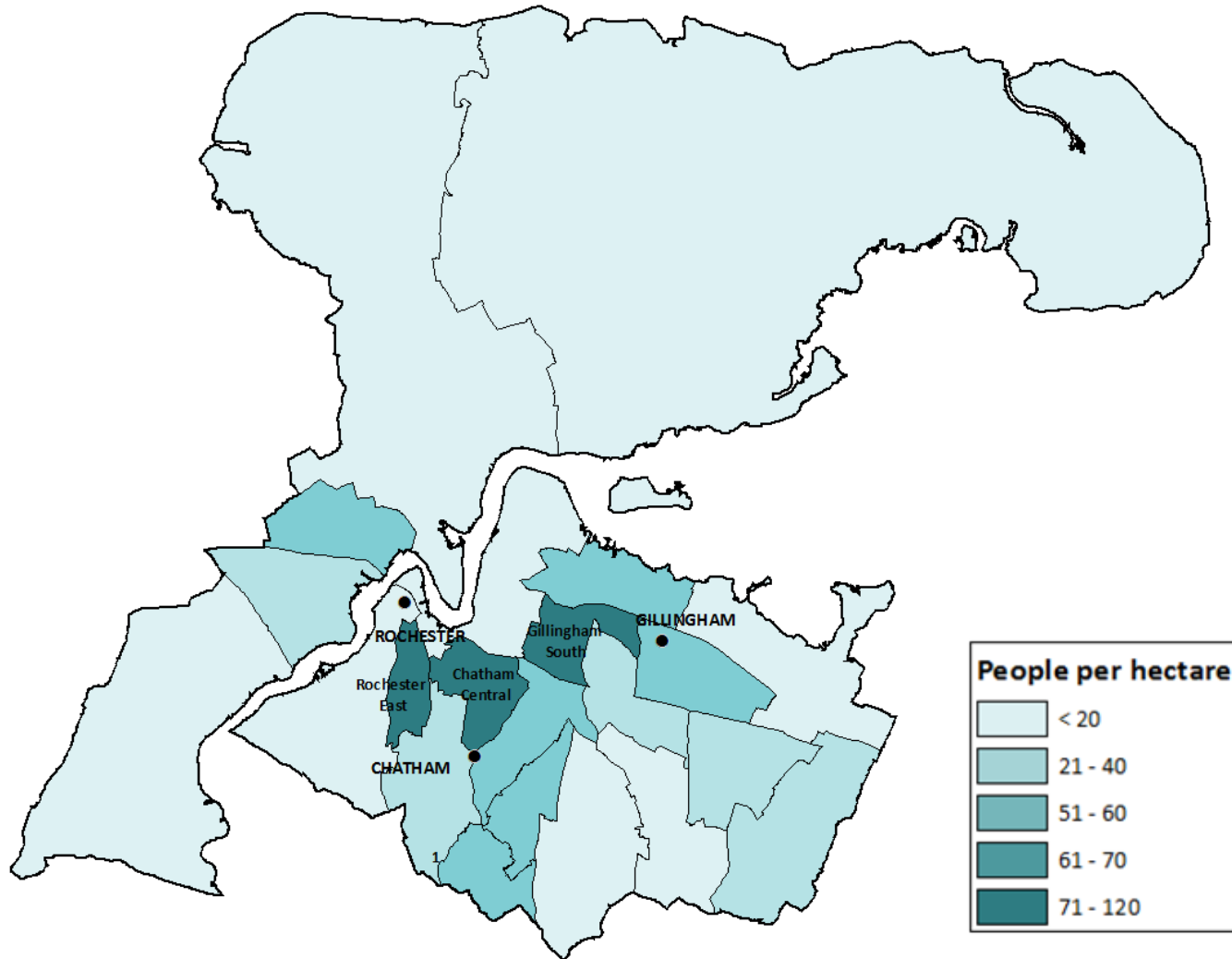
2016 resident population in Medway CCG compared to England



Mid-year estimates for 2016: Medway CCG			
Age band	Female	Male	Persons
0-4	9,085	9,653	18,738
05-09	8,836	9,311	18,147
10-14	8,275	8,326	16,601
15-19	8,166	8,973	17,139
20-24	9,440	9,399	18,839
25-29	10,175	10,385	20,560
30-34	9,433	9,479	18,912
35-39	9,211	8,899	18,110
40-44	8,842	8,898	17,740
45-49	9,956	9,940	19,896
50-54	9,815	9,786	19,601
55-59	8,566	8,432	16,998
60-64	6,998	7,026	14,024
65-69	7,427	6,942	14,369
70-74	5,553	5,163	10,716
75-79	4,133	3,612	7,745
80-84	3,097	2,357	5,454
85-89	2,019	1,189	3,208
90	1,253	492	1,745
All ages	140,280	138,262	278,542

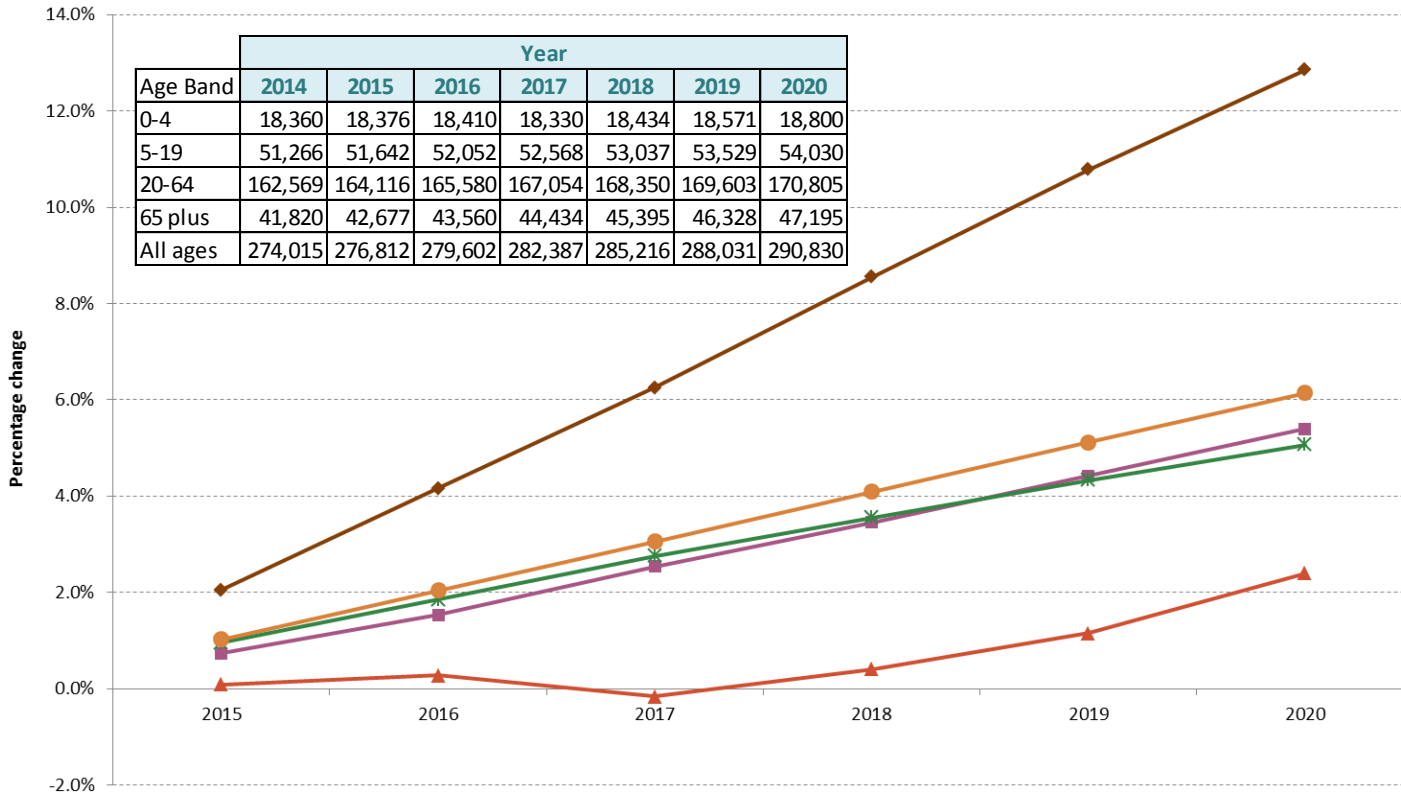
Source: ONS, prepared by KPHO (LLY), 11/17

Population density (2015, by ward)



Population growth: Medway CCG for 2015 to 2020 from 2014

0-4 5-19 20-64 65 plus All ages



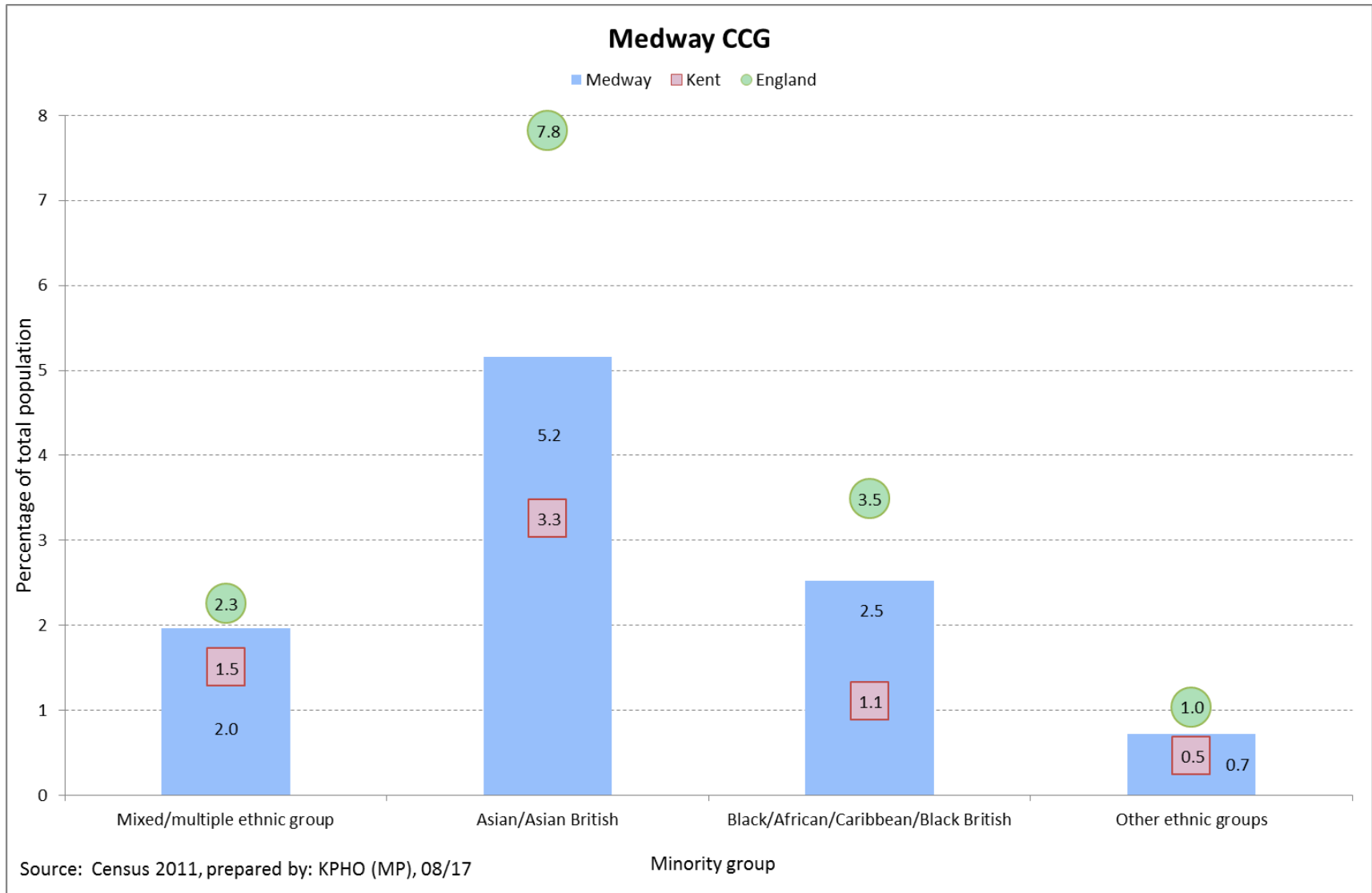
The chart shows the percentage growth of Medway CCG's projected population from 2015 to 2020.

This uses a baseline of 2014 population to calculate the percentage growth and is split into different age-bandings.

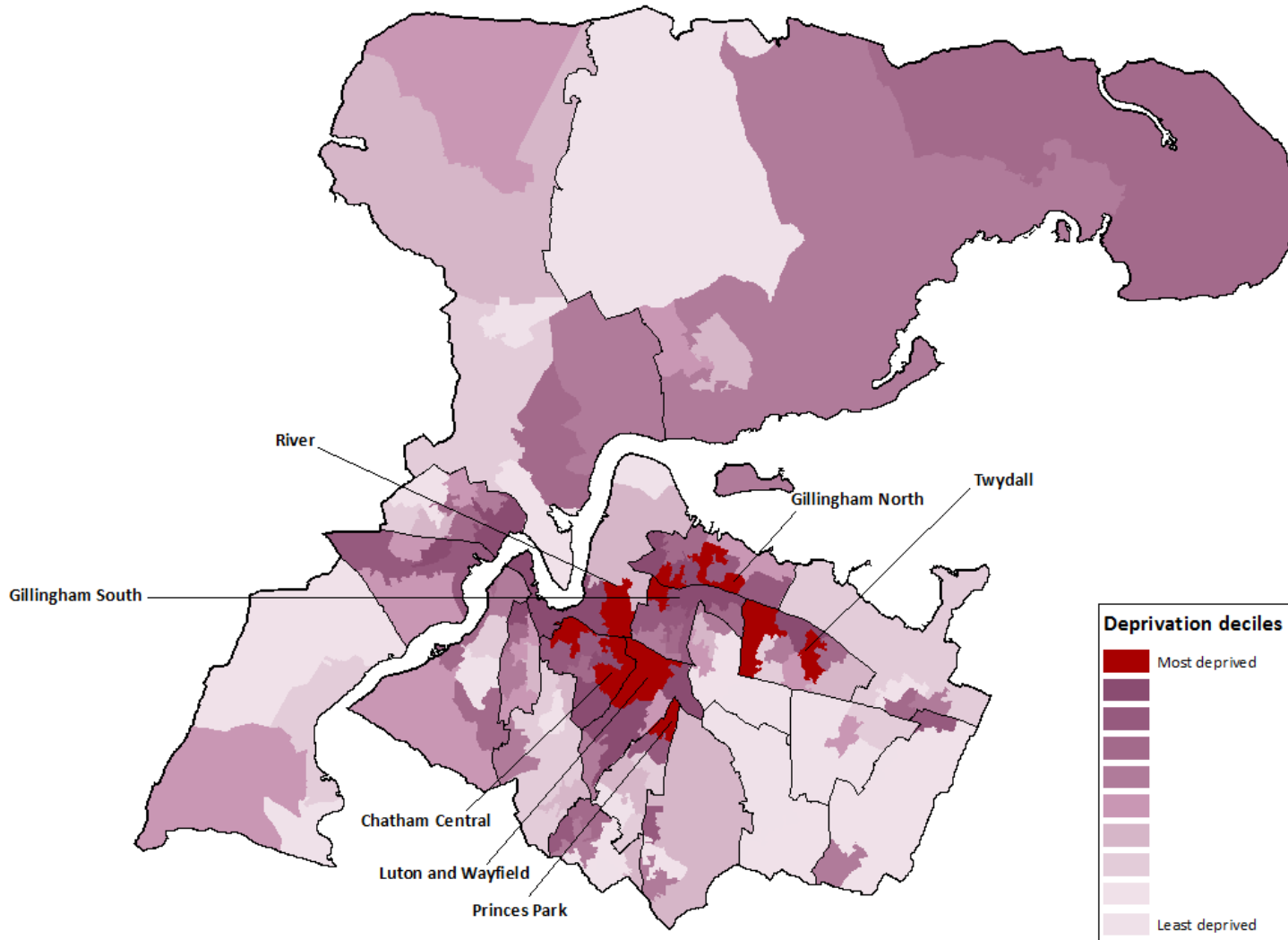
The table provides the total number of the different age-bandings for the baseline population (2014) and the projected population from 2015 to 2020.

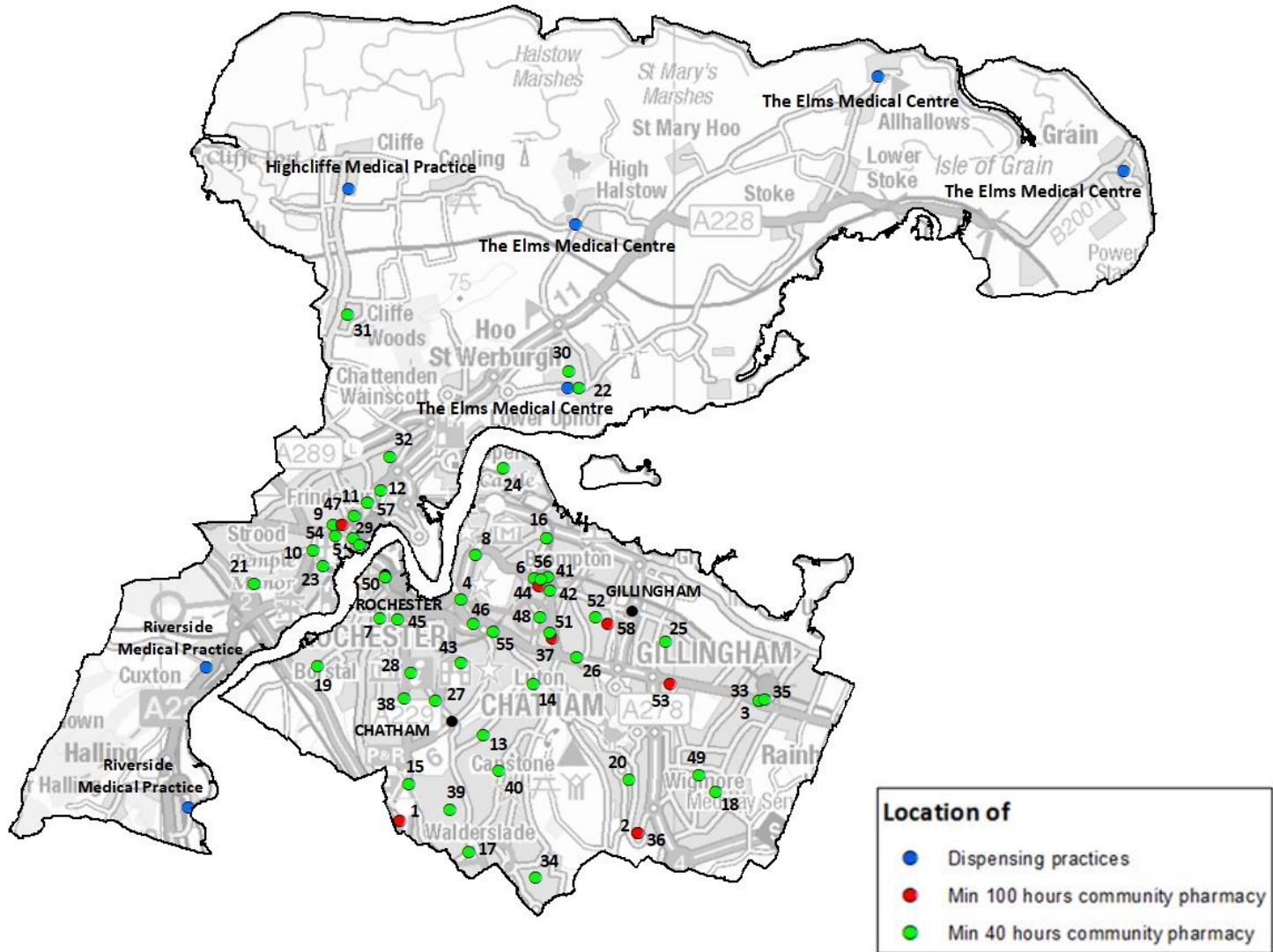
While population is increasing for all age bands the greatest growth is seen in the 65 years and over age band.

Source: ONS 2014 based population projections, prepared by KPHO (LLY), 07/17



Index of multiple deprivation(2015, Medway deciles) APPENDIX 2

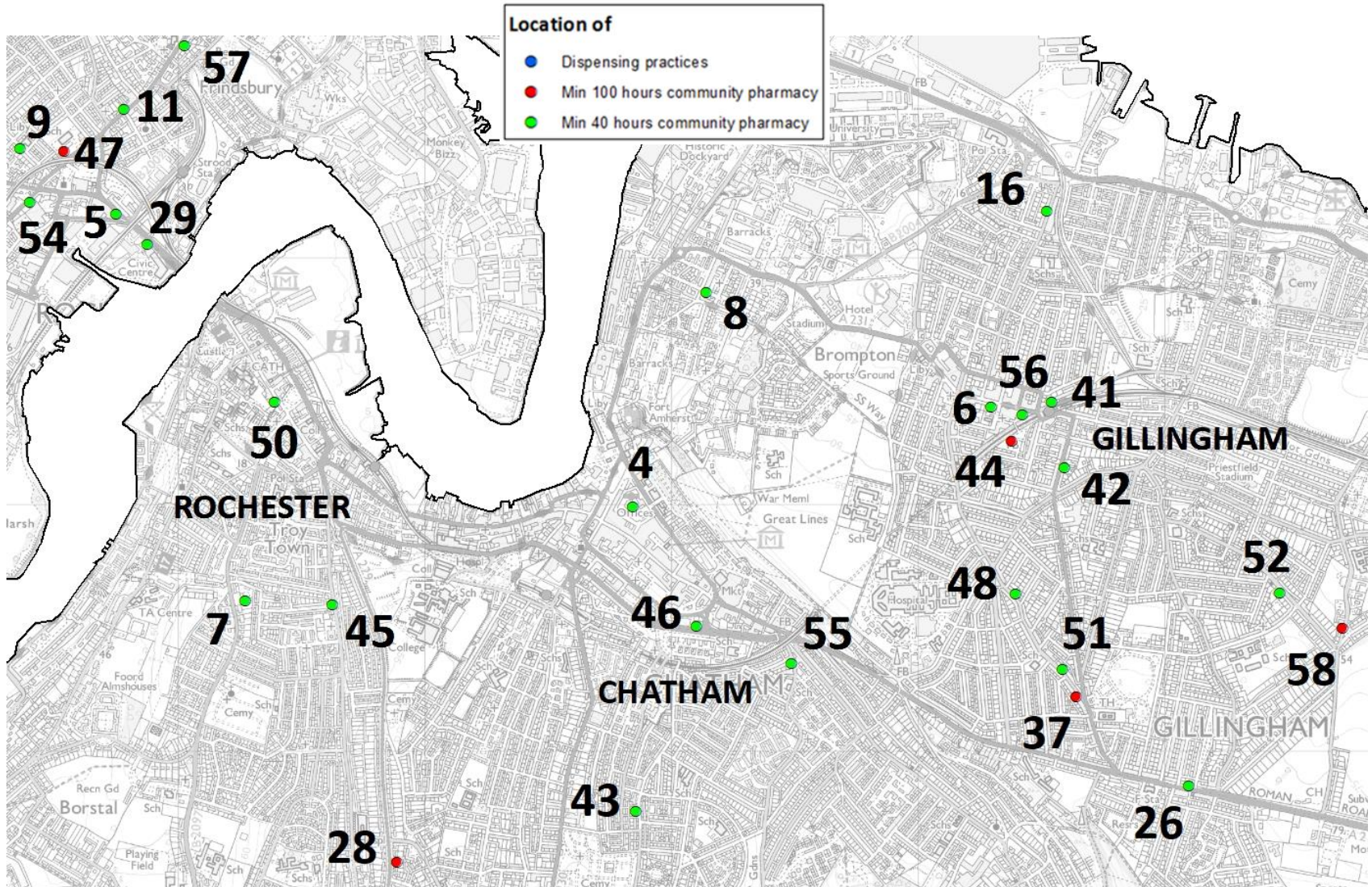




The numbers shown on the map are codes to identify the providers of pharmaceutical services; more details for these providers can be found on slides 11 and 12.

Providers of pharmaceutical services – central Medway

APPENDIX 2



The numbers shown on the map are codes to identify the providers of pharmaceutical services; more details for these providers can be found on slides 11 and 12.

Providers of pharmaceutical services – community pharmacies

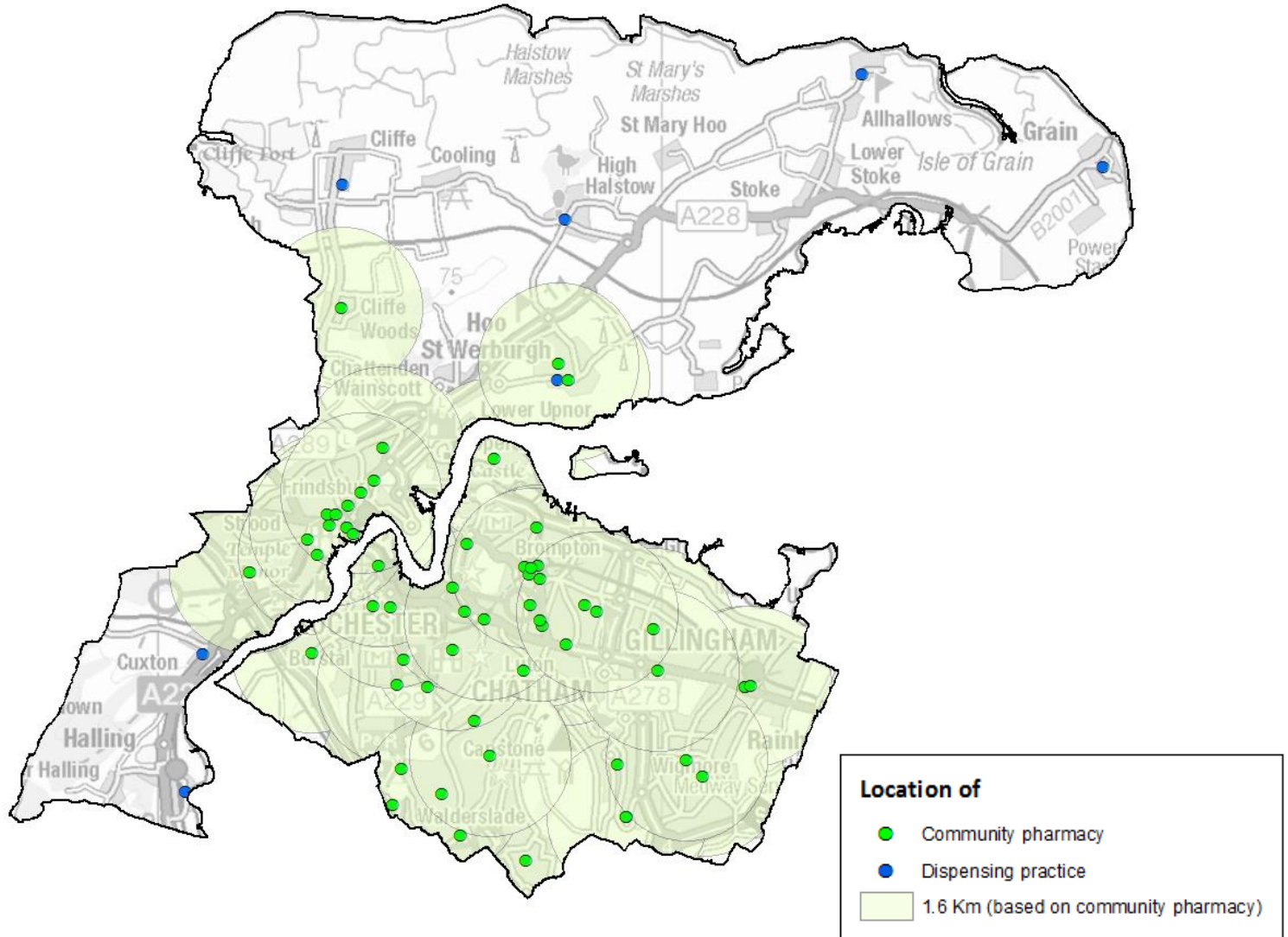
Community Pharmacies					
ID	Locality	Ward (2011)	Trading name	Postcode	Contract
1	Chatham	Rochester South & Horsted	Asda Pharmacy	ME59SD	Min 100 hours
2	Rainham & Gillingham	Hempstead & Wigmore	Boots	ME73PB	Min 40 hours
3	Rainham & Gillingham	Rainham North	Boots	ME87HW	Min 40 hours
4	Chatham	River	Boots	ME44BB	Min 40 hours
5	Rochester & Strood	Strood South	Boots	ME24AH	Min 40 hours
6	Rainham & Gillingham	Gillingham South	Boots	ME71BS	Min 40 hours
7	Rochester & Strood	Rochester East	Boots	ME12TH	Min 40 hours
8	Rainham & Gillingham	River	Brompton Pharmacy	ME75AA	Min 40 hours
9	Rochester & Strood	Strood North	Bryant Road Pharmacy	ME23EP	Min 40 hours
10	Rochester & Strood	Strood South	Coles Pharmacy	ME22EU	Min 40 hours
11	Rochester & Strood	Strood North	College Pharmacy Online	ME24ST	Min 40 hours
12	Rochester & Strood	Strood Rural	Countrywide Supplies Ltd	ME24HL	Min 40 hours
13	Chatham	Luton & Wayfield	Delmergate Limited	ME50HD	Min 40 hours
14	Chatham	Luton & Wayfield	Delmergate Limited	ME50AA	Min 40 hours
15	Chatham	Rochester South & Horsted	Delmergate Limited	ME59UR	Min 40 hours
16	Rainham & Gillingham	Gillingham North	Delmergate Limited	ME71LX	Min 40 hours
17	Chatham	Walderslade	Fenns Chemist	ME59LR	Min 40 hours
18	Rainham & Gillingham	Rainham South	Fenns Chemist	ME89PW	Min 40 hours
19	Rochester & Strood	Rochester West	Focus Chemists	ME13JS	Min 40 hours
20	Rainham & Gillingham	Hempstead & Wigmore	Hempstead Pharmacy	ME73QE	Min 40 hours
21	Rochester & Strood	Strood South	Hobbs Pharmacy	ME22PW	Min 40 hours
22	Rochester & Strood	Peninsula	Hoo Pharmacy	ME39AA	Min 40 hours
23	Rochester & Strood	Strood South	Hope Online Pharmacy	ME22LS	Min 40 hours
24	Chatham	River	Island Pharmacy	ME43EP	Min 40 hours
25	Rainham & Gillingham	Twydall	J Spensley	ME86JY	Min 40 hours
26	Rainham & Gillingham	Watling	Jhoots Pharmacy	ME72YW	Min 40 hours
27	Chatham	Rochester South & Horsted	Karsons Pharmacy	ME46JR	Min 40 hours
28	Rochester & Strood	Rochester South & Horsted	Karsons Pharmacy	ME12BA	Min 100 hours
29	Rochester & Strood	Strood South	Karsons Pharmacy Limited	ME24AB	Min 40 hours

Community Pharmacies					
ID	Locality	Ward (2011)	Trading name	Postcode	Contract
30	Rochester & Strood	Peninsula	Knights Pharmacy	ME39DT	Min 40 hours
31	Rochester & Strood	Strood Rural	Cliffe Woods Pharmacy	ME38HX	Min 40 hours
32	Rochester & Strood	Strood Rural	Wainscott Pharmacy	ME24LP	Min 40 hours
33	Rainham & Gillingham	Rainham North	Lloyds Pharmacy	ME87HW	Min 40 hours
34	Chatham	Lordswood & Capstone	Lloyds Pharmacy	ME58TH	Min 40 hours
35	Rainham & Gillingham	Rainham North	Lloyds Pharmacy	ME87PH	Min 40 hours
36	Rainham & Gillingham	Hempstead & Wigmore	Lloyds Pharmacy	ME73PB	Min 100 hours
37	Rainham & Gillingham	Gillingham South	Medway Pharmacy	ME75JU	Min 100 hours
38	Rochester & Strood	Rochester South & Horsted	Merlin Pharmacy	ME12BQ	Min 40 hours
39	Chatham	Walderslade	Merlin Pharmacy Consultants Ltd	ME50QX	Min 40 hours
40	Chatham	Princes Park	Morrisons Pharmacy	ME57PQ	Min 40 hours
41	Rainham & Gillingham	Gillingham North	Osbon Pharmacy	ME71XF	Min 40 hours
42	Rainham & Gillingham	Gillingham South	Osbon Pharmacy	ME74LA	Min 40 hours
43	Chatham	Chatham Central	Palmers Pharmacy	ME45SJ	Min 40 hours
44	Rainham & Gillingham	Gillingham South	Paydens Ltd	ME74PN	Min 100 hours
45	Rochester & Strood	Rochester East	Paydens Ltd	ME12DT	Min 40 hours
46	Chatham	River	Paydens Ltd	ME44PT	Min 40 hours
47	Rochester & Strood	Strood North	Pharmacy @ Gun Lane	ME24UW	Min 100 hours
48	Rainham & Gillingham	Gillingham South	Pharmacy 1st	ME75XL	Min 40 hours
49	Rainham & Gillingham	Rainham South	Phoenix Pharmacy	ME80HX	Min 40 hours
50	Rochester & Strood	Rochester West	Ryders Chemist	ME11JT	Min 40 hours
51	Rainham & Gillingham	Gillingham South	Smiths Pharmacy	ME75JP	Min 40 hours
52	Rainham & Gillingham	Watling	Sturdee Avenue Pharmacy	ME72HN	Min 40 hours
53	Rainham & Gillingham	Rainham Central	Tesco Pharmacy	ME80GX	Min 100 hours
54	Rochester & Strood	Strood South	Tesco Pharmacy	ME22BT	Min 40 hours
55	Chatham	Chatham Central	Well Chatham	ME45JY	Min 40 hours
56	Rainham & Gillingham	Gillingham South	Well Gillingham	ME71AQ	Min 40 hours
57	Rochester & Strood	Strood North	Williams Chemist	ME24HY	Min 40 hours
58	Rainham & Gillingham	Gillingham South	Woodlands Pharmacy	ME72BU	Min 100 hours

Providers of pharmaceutical services – dispensing practices

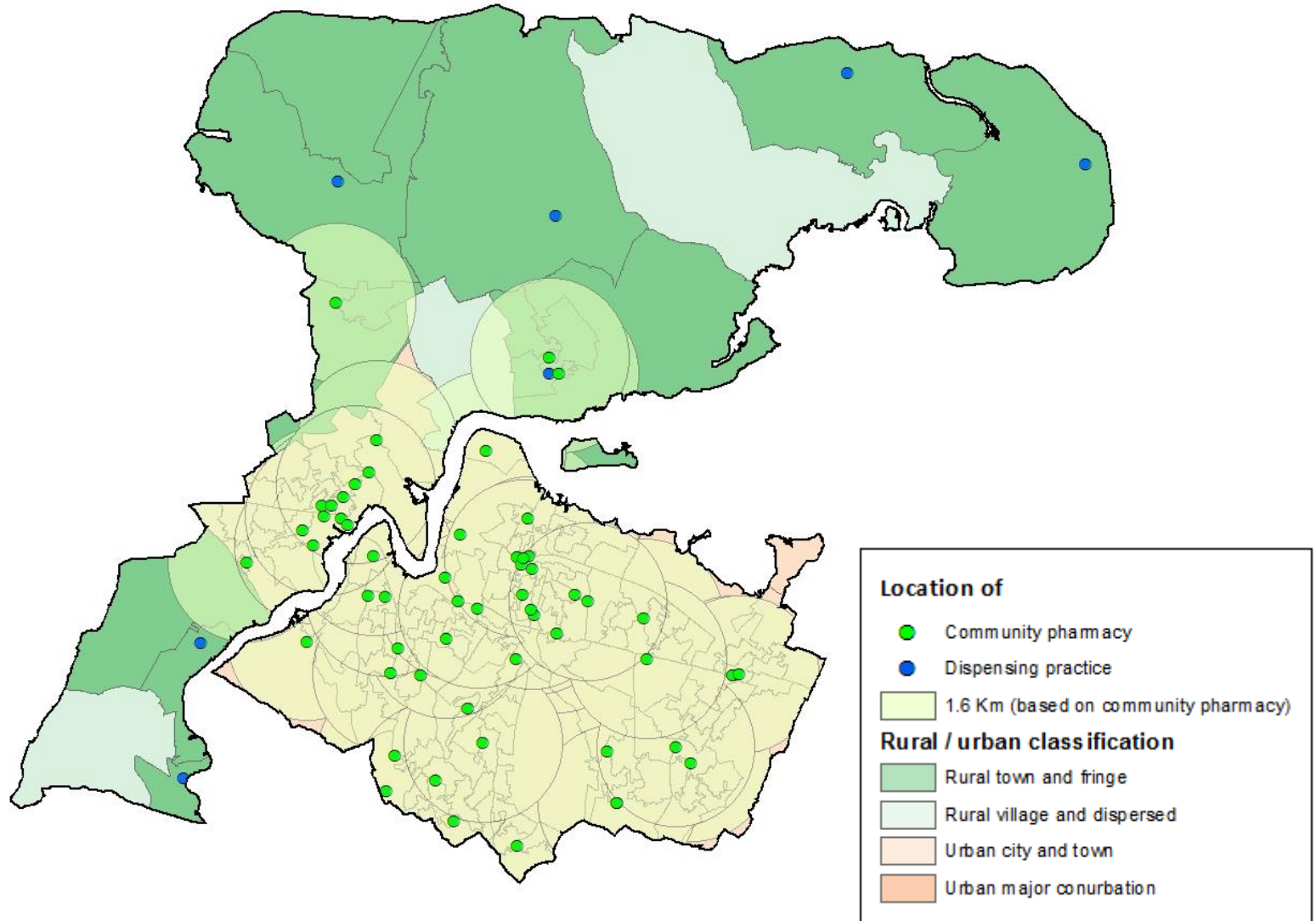
Dispensing Practices					
ID	Practice Code	Practice name	Main site?	Postcode	Ward (2011)
1	G82100	Highcliffe Medical Practice	No	ME37QN	Strood Rural
2	G82180	Maidstone Road Surgery	No	ME97AU	Hartlip, Newington & Upchurch
3	G82106	Riverside Medical Practice	No	ME21LT	Cuxton & Halling
4	G82106	Riverside Medical Practice	Yes	ME21NP	Cuxton & Halling
5	G82077	The Elms Medical Centre	No	ME30BY	Peninsula
6	G82077	The Elms Medical Centre	No	ME38SF	Peninsula
7	G82077	The Elms Medical Centre	Yes	ME39AE	Peninsula
8	G82077	The Elms Medical Centre	No	ME39NY	Peninsula

Distance rings (1.6km) around community pharmacies

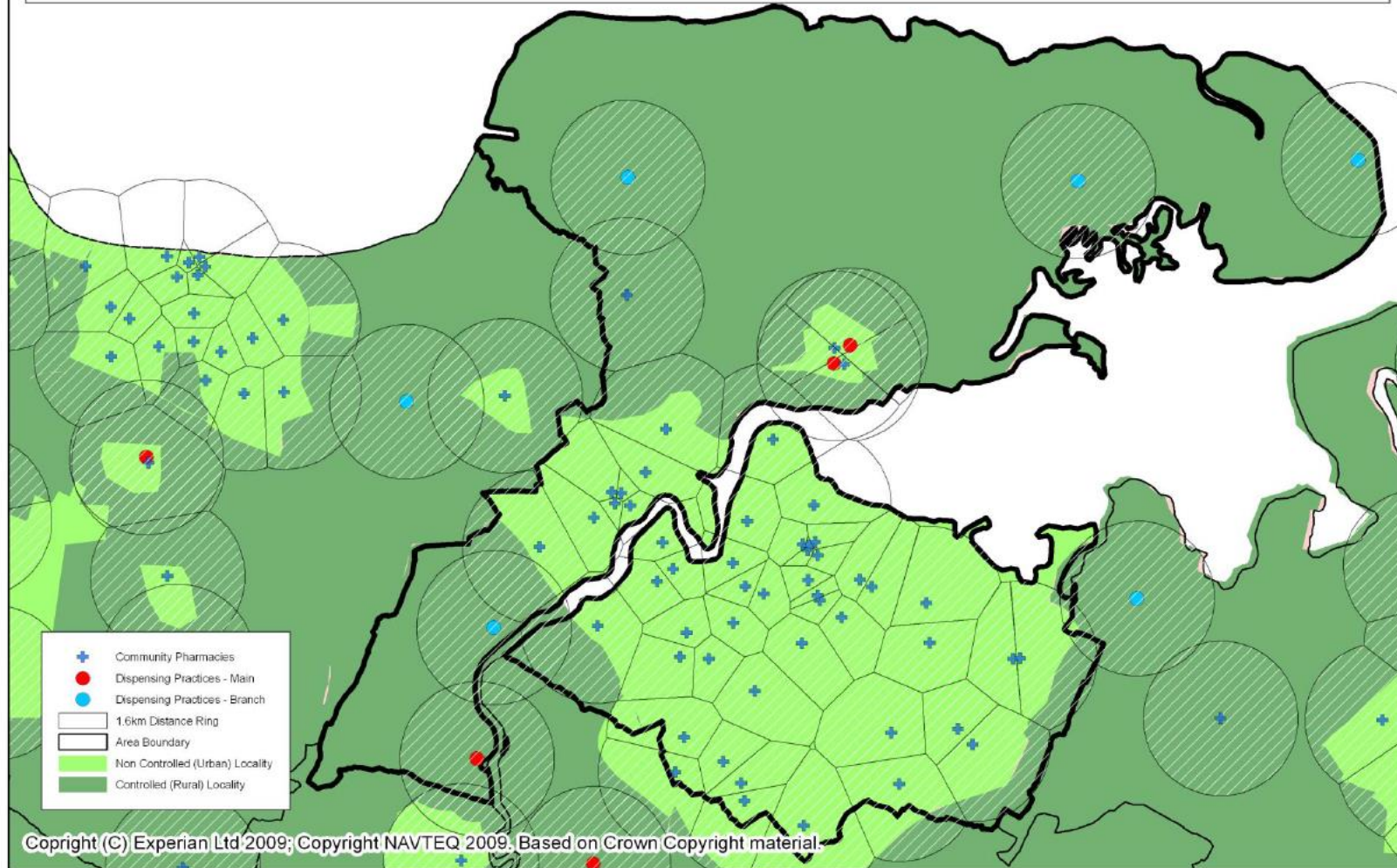


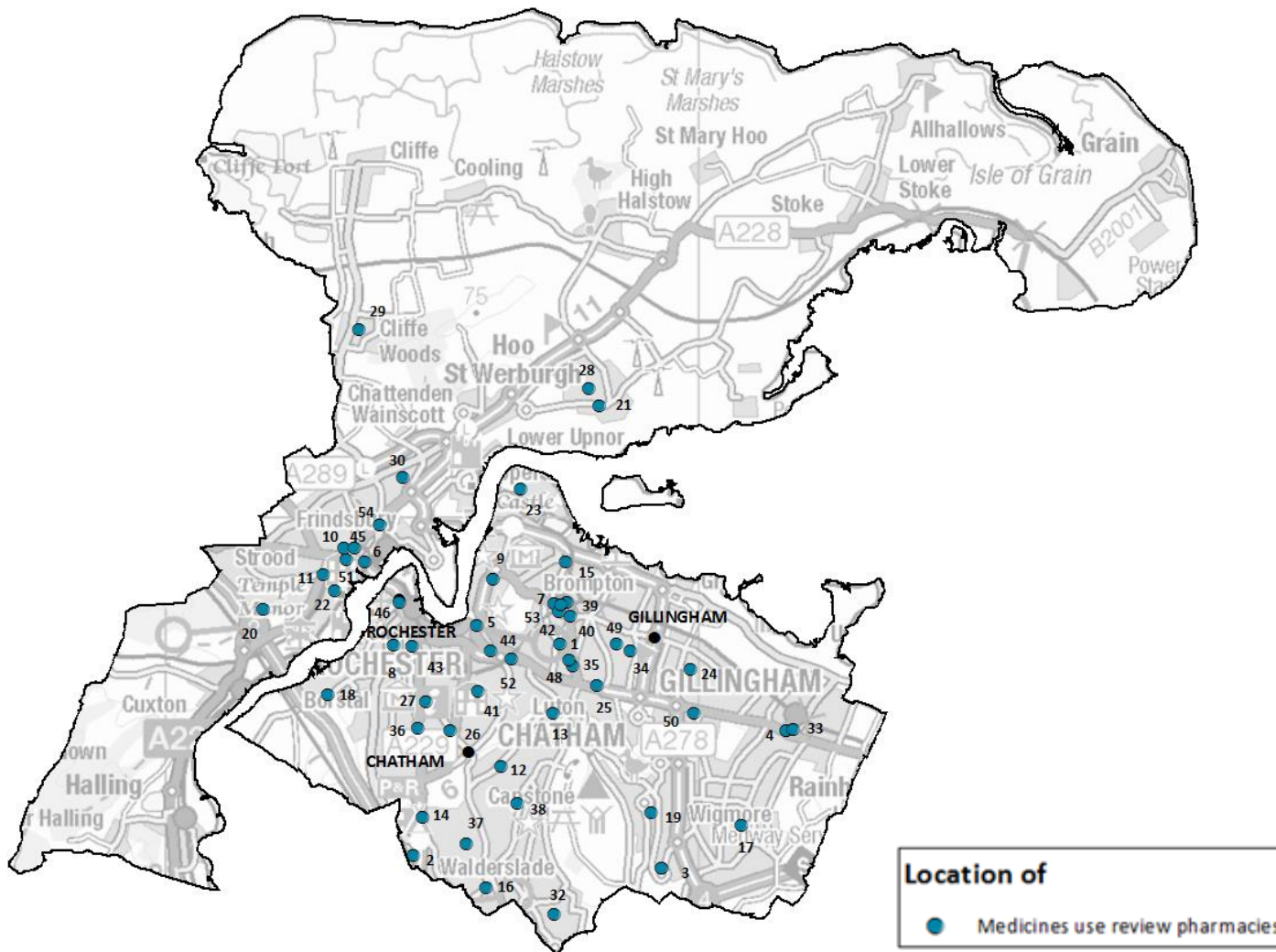
Distance rings (1.6km) around community pharmacies APPENDIX 2

with rural urban classification (2011)



Controlled Localities and Distance Rings 1.6km Around Community Pharmacies and Dispensing Practices, Medway

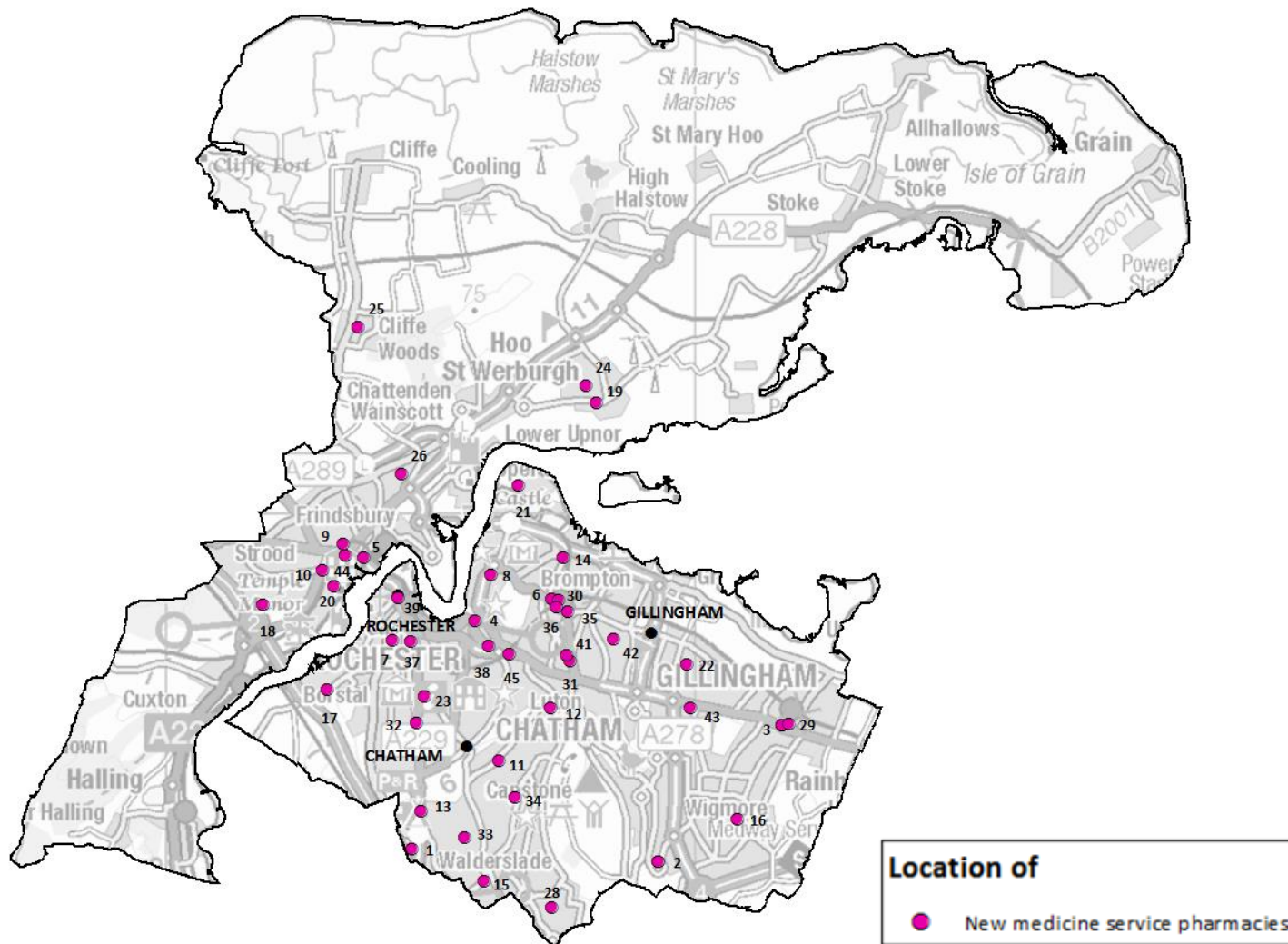




The numbers shown on the map are codes to identify the pharmacies of medicine use review; more details for these pharmacies can be found on slide 17.

Medicine use review pharmacies			
ID	Pharmacy Name	Postcode	Ward (2011)
1	212 Pharmacy	ME75XL	Gillingham South
2	Asda Pharmacy	ME59SD	Rochester South & Horsted
3	Boots	ME73PB	Hempstead & Wigmore
4	Boots	ME87HW	Rainham North
5	Boots	ME44BB	River
6	Boots	ME24AH	Strood South
7	Boots	ME71BS	Gillingham South
8	Boots	ME12TH	Rochester East
9	Brompton Pharmacy	ME75AA	River
10	Bryant Road Pharmacy	ME23EP	Strood North
11	Coles Pharmacy	ME22EU	Strood South
12	Delmergate Limited	ME50HD	Luton & Wayfield
13	Delmergate Limited	ME50AA	Luton & Wayfield
14	Delmergate Limited	ME59UR	Rochester South & Horsted
15	Delmergate Limited	ME71LX	Gillingham North
16	Fenns Chemist	ME59LR	Walderslade
17	Fenns Chemist	ME89PW	Rainham South
18	Focus Chemists	ME13JS	Rochester West
19	Hempstead Pharmacy	ME73QE	Hempstead & Wigmore
20	Hobbs Pharmacy	ME22PW	Strood South
21	Hoo Pharmacy	ME39AA	Peninsula
22	Hope Online Pharmacy	ME22LS	Strood South
23	Island Pharmacy	ME43EB	River
24	J Spensley	ME86JY	Twydall
25	Jhoots Pharmacy	ME72YW	Watling
26	Karsons Pharmacy	ME46JR	Rochester South & Horsted
27	Karsons Pharmacy	ME12BA	Rochester South & Horsted

Medicine use review pharmacies			
ID	Pharmacy Name	Postcode	Ward (2011)
28	Knights Pharmacy	ME39DT	Peninsula
29	Cliffe Woods Pharmacy	ME38HX	Strood Rural
30	Wainscott Pharmacy	ME24LP	Strood Rural
31	Lloyds Pharmacy	ME87HW	Rainham North
32	Lloyds Pharmacy	ME58TH	Lordswood & Capstone
33	Lloyds Pharmacy	ME87PH	Rainham North
34	Woodlands Pharmacy	ME72BU	Gillingham South
35	Medway Pharmacy	ME75LJ	Gillingham South
36	Merlin Pharmacy	ME12BQ	Rochester South & Horsted
37	Merlin Pharmacy Consultants Ltd	ME50QX	Walderslade
38	Morrisons Pharmacy	ME57PQ	Princes Park
39	Osbon Pharmacy	ME71XF	Gillingham North
40	Osbon Pharmacy	ME74LA	Gillingham South
41	Palmers Pharmacy	ME45SJ	Chatham Central
42	Paydens Ltd	ME74PN	Gillingham South
43	Paydens Ltd	ME12DT	Rochester East
44	Paydens Ltd	ME44PT	River
45	Pharmacy @ Gun Lane	ME24UW	Strood North
46	Ryders Chemist	ME11JT	Rochester West
47	Sainsbury's Pharmacy	ME73PB	Hempstead & Wigmore
48	Smiths Pharmacy	ME75JP	Gillingham South
49	Sturdee Avenue Pharmacy	ME72HN	Watling
50	Tesco Pharmacy	ME80GX	Rainham Central
51	Tesco Pharmacy	ME22BT	Strood South
52	Well Chatham	ME45JY	Chatham Central
53	Well Gillingham	ME71AQ	Gillingham South
54	Williams Chemist	ME24HY	Strood North

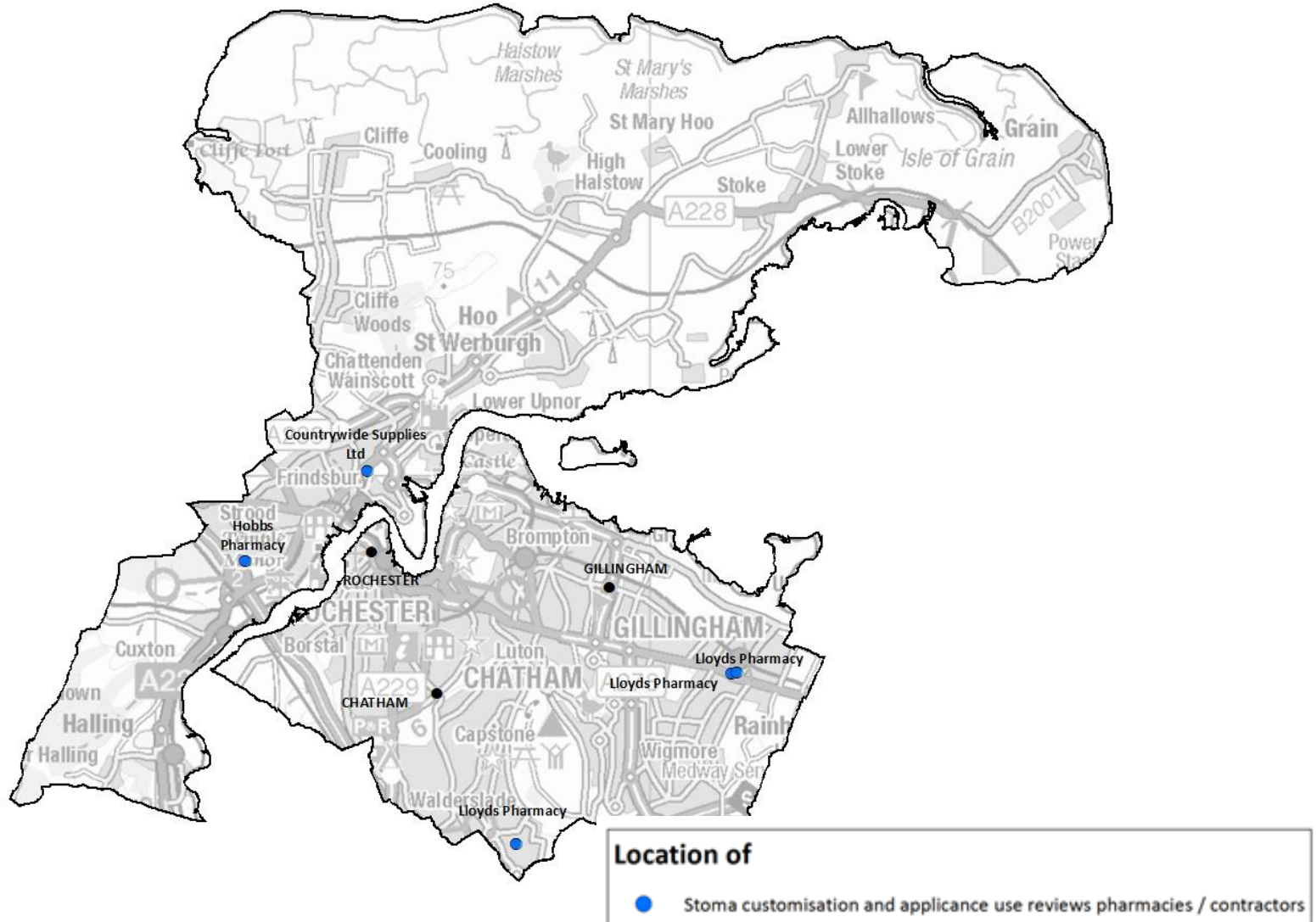


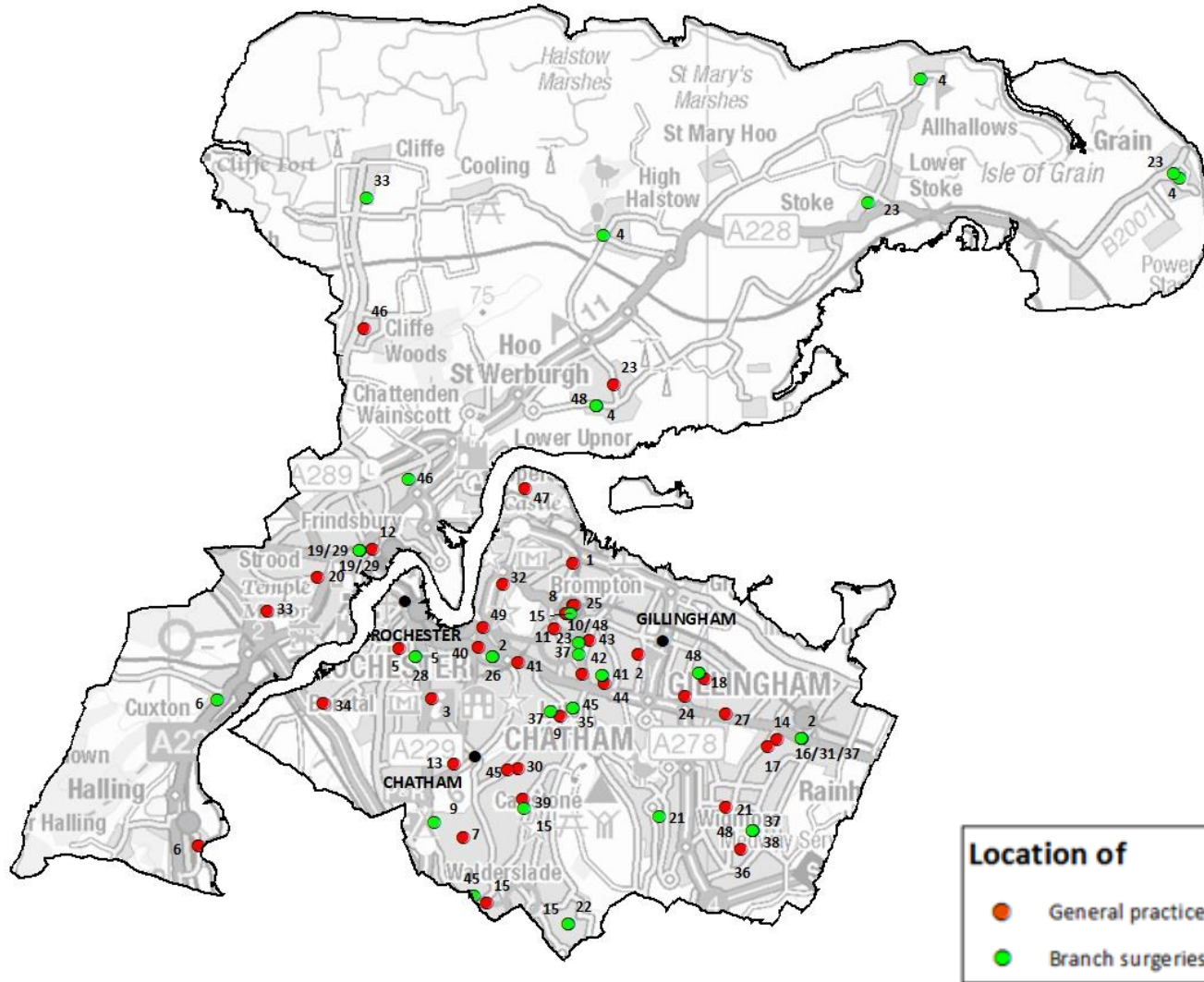
The numbers shown on the map are codes to identify the pharmacies providing a new medicine service; more details for these pharmacies can be found on slide 19.

New medicine review				
ID	Pharmacy code	Trading name	Postcode	Ward (2011)
1	FKK59	Asda Pharmacy	ME59SD	Rochester South & Horsted
2	FD032	Boots	ME73PB	Hempstead & Wigmore
3	FEY67	Boots	ME87HW	Rainham North
4	FM682	Boots	ME44BB	River
5	FV186	Boots	ME24AH	Strood South
6	FXP56	Boots	ME71BS	Gillingham South
7	FYN18	Boots	ME12TH	Rochester East
8	FEP94	Brompton Pharmacy	ME75AA	River
9	FM600	Bryant Road Pharmacy	ME23EP	Strood North
10	FR400	Coles Pharmacy	ME22EU	Strood South
11	FF328	Delmergate Limited	ME50HD	Luton & Wayfield
12	FNE17	Delmergate Limited	ME50AA	Luton & Wayfield
13	FQ410	Delmergate Limited	ME59UR	Rochester South & Horsted
14	FRM80	Delmergate Limited	ME71LX	Gillingham North
15	FEL36	Fenns Chemist	ME59LR	Walderslade
16	FJF87	Fenns Chemist	ME89PW	Rainham South
17	FH750	Focus Chemists	ME13JS	Rochester West
18	FTM63	Hobbs Pharmacy	ME22PW	Strood South
19	FJE35	Hoo Pharmacy	ME39AA	Peninsula
20	FW322	Hope Online Pharmacy	ME22LS	Strood South
21	FL840	Island Pharmacy	ME43EB	River
22	FED75	J Spensley	ME86JY	Twydall
23	FJF12	Karsons Pharmacy	ME12BA	Rochester South & Horsted

New medicine review				
ID	Pharmacy code	Trading name	Postcode	Ward (2011)
24	FEM57	Knights Pharmacy	ME39DT	Peninsula
25	FFE74	Cliffe Woods Pharmacy	ME38HX	Strood Rural
26	FP206	Wainscott Pharmacy	ME24LP	Strood Rural
27	FAV64	Lloyds Pharmacy	ME87HW	Rainham North
28	FCR68	Lloyds Pharmacy	ME58TH	Lordswood & Capstone
29	FGK03	Lloyds Pharmacy	ME87PH	Rainham North
30	FE677	Well Gillingham	ME71AQ	Gillingham South
31	FN425	Medway Pharmacy	ME75LJ	Gillingham South
32	FL693	Merlin Pharmacy	ME12BQ	Rochester South & Horsted
33	FFM54	Merlin Pharmacy Consultants Ltd	ME50QX	Walderslade
34	FR909	Morrisons Pharmacy	ME57PQ	Princes Park
35	FRG62	Osbon Pharmacy	ME74LA	Gillingham South
36	FA447	Paydens Ltd	ME74PN	Gillingham South
37	FGF64	Paydens Ltd	ME12DT	Rochester East
38	FKE87	Paydens Ltd	ME44PT	River
39	FHY79	Ryders Chemist	ME11JT	Rochester West
40	FX206	Sainsbury's Pharmacy	ME73PB	Hempstead & Wigmore
41	FKJ56	Smiths Pharmacy	ME75JP	Gillingham South
42	FL383	Sturdee Avenue Pharmacy	ME72HN	Watling
43	FFV74	Tesco Pharmacy	ME80GX	Rainham Central
44	FMH56	Tesco Pharmacy	ME22BT	Strood South
45	FGR89	Well Chatham	ME45JY	Chatham Central

Pharmacies and appliance contractors providing stoma customisation and appliance use reviews

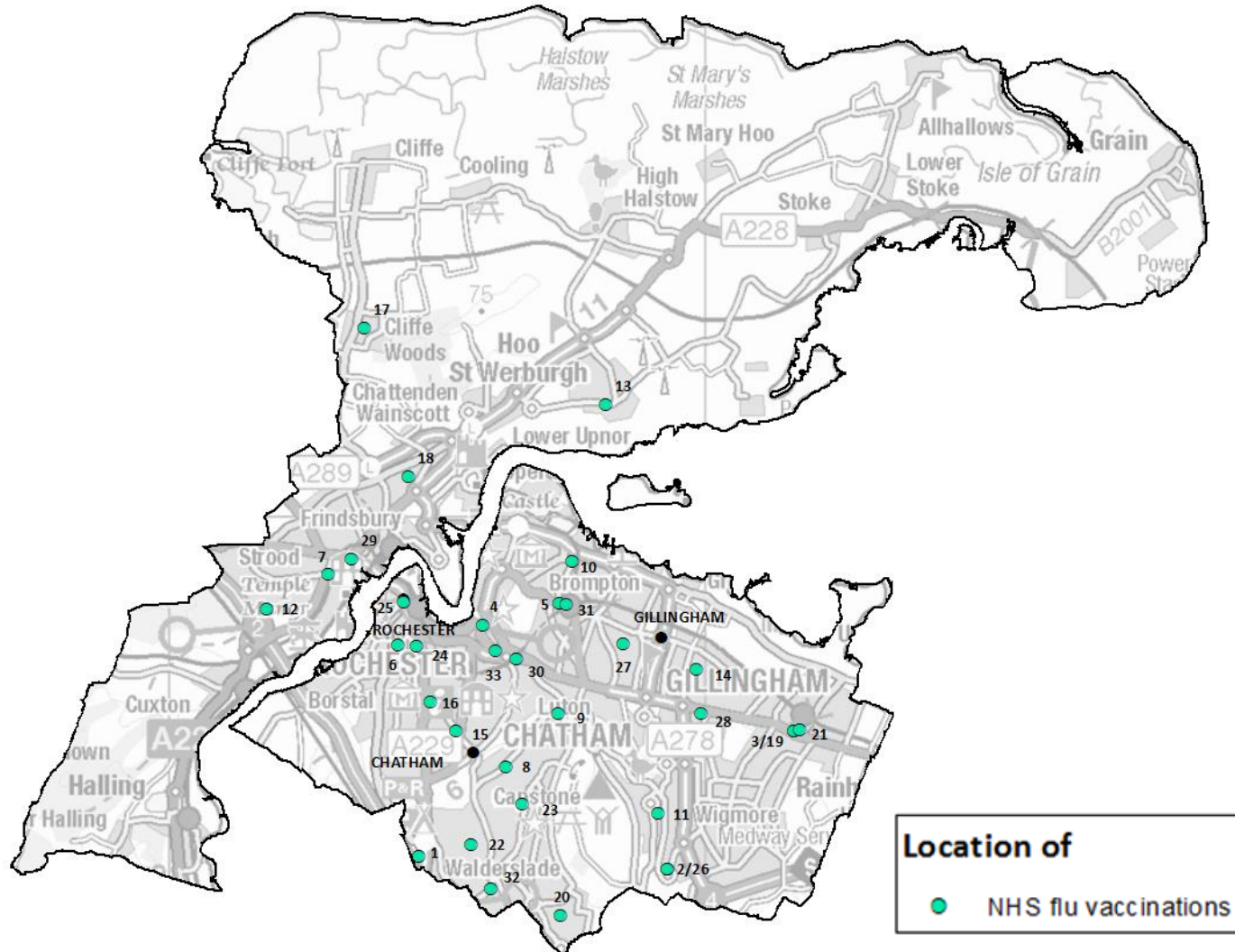




General practices - Main				
Key	Practice Code	Practice Name	Postcode	Ward (2011)
1	G82011	Sunlight Centre Surgery	ME71LX	Gillingham North
2	G82014	Woodlands Family Practice	ME72BU	Gillingham South
3	G82051	City Way Surgery	ME12AY	Rochester South & Horsted
4	G82077	The Elms Medical Centre	ME39AE	Peninsula
5	G82095	Thorndike Surgery	ME12TH	Rochester East
6	G82106	Riverside Medical Practice	ME21NP	Cuxton & Halling
7	G82108	King George Road	ME50TT	Walderslade
8	G82109	Railside Surgery	ME71XG	Gillingham North
9	G82113	Stonecross And West Drive Surgery	ME50AA	Luton & Wayfield
10	G82123	Balmoral Gardens	ME74PN	Gillingham South
11	G82129	The Glebe Family Practice	ME75UA	Gillingham South
12	G82133	St Marys Medical Centre	ME24DG	Strood North
13	G82139	Maidstone Road	ME46JL	Rochester South & Horsted
14	G82154	Thames Avenue	ME89BW	Rainham Central
15	G82161	Walderslade Village	ME59LD	Walderslade
16	G82162	Rainham Healthy Living	ME88AA	Rainham North
17	G82180	Maidstone Road Surgery	ME80DP	Rainham Central
18	G82184	Waltham Road	ME86KQ	Twydall
19	G82198	Gun Lane	ME24UW	Strood North
20	G82203	Court View Surgery	ME22HA	Strood South
21	G82226	Wigmore Medical Centre	ME80PW	Rainham Central
22	G82230	Lordwood Comm Hlc	ME58TJ	Lordwood & Capstone
23	G82233	St Werburgh Practice	ME39HU	Peninsula
24	G82600	Eastcourt Lane Surgery	ME86EY	Twydall
25	G82622	Railway Street	ME71XF	Gillingham North

General practices - Main				
Key	Practice Code	Practice Name	Postcode	Ward (2011)
26	G82631	Bryant Street	ME45QS	Chatham Central
27	G82635	Pump Lane	ME87AA	Twydall
28	G82653	Castle Medical Practice	ME12EL	Rochester East
29	G82679	Apex Medical Practice	ME24UW	Strood North
30	G82697	The Churchill Clinic	ME50DL	Luton & Wayfield
31	G82704	Church View Practice	ME88AA	Rainham North
32	G82706	Brompton Medical Centre	ME75AS	River
33	G82708	Marlowe Park Medical Centre	ME22PW	Strood South
34	G82711	Borstal Village	ME13JY	Rochester West
35	G82719	Matrix Medical Practice	ME57JX	Luton & Wayfield
36	G82721	Parkwood Family Practice	ME89RR	Rainham South
37	G82727	Malling Health	ME88AA	Rainham North
38	G82737	Long Catlis Road Surgery	ME89PR	Rainham South
39	G82741	Princes Park Medical Centre	ME57TD	Princes Park
40	G82744	The Halfway Surgery	ME44QR	Chatham Central
41	G82753	The Kings Family Practice	ME45JY	Chatham Central
42	G82762	Upper Canterbury Street	ME75LH	Gillingham South
43	G82763	Napier Road Surgery	ME74HH	Watling
44	G82775	Malvern Road Surgery	ME74BB	Watling
45	G82820	Wayfield Road	ME50HD	Luton & Wayfield
46	Y00198	The Parks Medical Practice	ME38HX	Strood Rural
47	Y00449	St Mary's Island	ME43EP	River
48	Y02462	Dulwich Health Medical Centre	ME74PN	Gillingham South
49	Y02471	College Health-Boots	ME44BB	River

General practices - Branch				
Key	Practice Code	Practice Name	Postcode	Ward (2011)
2	G82014	Woodlands Family Practice	ME88AA	Rainham North
2	G82014	Byrant Street Medical Centre	ME45QS	Chatham Central
4	G82077	The Elms Medical Centre	ME30BY	Peninsula
4	G82077	The Elms Medical Centre	ME38SF	Peninsula
4	G82077	The Elms Medical Centre	ME39NY	Peninsula
5	G82095	Rochester Community Health Liv	ME12EL	Rochester East
33	G82100	Highcliffe Medical Practice	ME37QN	Strood Rural
6	G82106	Riverside Medical Practice	ME21LT	Cuxton & Halling
9	G82113	West Drive Surgery	ME59XG	Rochester South & Horsted
15	G82161	Walderslade Village Surgery	ME57PQ	Princes Park
15	G82161	Kiran Virdee Medical Centre	ME58TJ	Lordwood & Capstone
15	G82161	Balmoral Road Surgery	ME74PG	Gillingham South
19	G82198	Gun Lane Medical Centre	ME24UW	Strood North
21	G82226	Wigmore Medical Centre	ME73QE	Hempstead & Wigmore
23	G82233	St Werburgh Medical Practice	ME39ST	Peninsula
23	G82233	St Werburgh Medical Practice	ME30BZ	Peninsula
23	G82233	St Werburgh Medical Practice	ME74LL	Gillingham South
29	G82679	Gun Lane Medical Centre	ME24UW	Strood North
37	G82727	Nelson Road Surgery	ME74LT	Gillingham South
37	G82727	Parkwood Health Centre	ME89PR	Rainham South
37	G82727	Kings Road Clinic	ME45AU	Luton & Wayfield
41	G82753	The Kings Family Practice	ME74AX	Watling
45	G82820	Tunbury Avenue Surgery	ME59EH	Walderslade
45	G82820	Luton Medical Centre	ME57JX	Luton & Wayfield
46	Y00198	The Parks Medical Practice	ME24LP	Strood Rural
48	Y02462	Twydall Clinic	ME86JY	Twydall
48	Y02462	Parkwood Health Centre	ME89PR	Rainham South
48	Y02462	The Walter Brice Centre	ME39AE	Peninsula



NHS flu vaccinations			
Key	Pharmacy Name	Postcode	Ward (2011)
1	Asda Pharmacy	ME59SD	Rochester South & Horsted
2	Boots	ME73PB	Hempstead & Wigmore
3	Boots	ME87HW	Rainham North
4	Boots	ME44BB	River
5	Boots	ME71BS	Gillingham South
6	Boots	ME12TH	Rochester East
7	Coles Pharmacy	ME22EU	Strood South
8	Delmergate Limited	ME50HD	Luton & Wayfield
9	Delmergate Limited	ME50AA	Luton & Wayfield
10	Delmergate Limited	ME71LX	Gillingham North
11	Hempstead Pharmacy	ME73QE	Hempstead & Wigmore
12	Hobbs Pharmacy	ME22PW	Strood South
13	Hoo Pharmacy	ME39AA	Peninsula
14	J Spensley	ME86JY	Twydall
15	Karsons Pharmacy	ME46JR	Rochester South & Horsted
16	Karsons Pharmacy	ME12BA	Rochester South & Horsted
17	Cliffe Woods Pharmacy	ME38HX	Strood Rural
18	Wainscott Pharmacy	ME24LP	Strood Rural
19	Lloyds Pharmacy	ME87HW	Rainham North
20	Lloyds Pharmacy	ME58TH	Lordswood & Capstone
21	Lloyds Pharmacy	ME87PH	Rainham North
22	Merlin Pharmacy Consultants Ltd	ME50QX	Walderslade

NHS flu vaccinations			
Key	Pharmacy Name	Postcode	Ward (2011)
23	Morrisons Pharmacy	ME57PQ	Princes Park
24	Paydens Ltd	ME12DT	Rochester East
25	Ryders Chemist	ME11JT	Rochester West
26	Sainsbury's Pharmacy	ME73PB	Hempstead & Wigmore
27	Sturdee Avenue Pharmacy	ME72HN	Watling
28	Tesco Pharmacy	ME80GX	Rainham Central
29	Tesco Pharmacy	ME22BT	Strood South
30	Well Chatham	ME45JY	Chatham Central
31	Well Gillingham	ME71AQ	Gillingham South
32	Fenns Chemist	ME59LR	Walderslade
33	Paydens Ltd	ME44PT	River



Orientation maps

- Source: Base layer available on ArcGIS



Population maps and information

- Sources Office for National Statistics (ONS), 2014 based forecasts used for population projections. All other populations are based on 2016 mid-year estimates (MYE)



Ethnicity profiles

- Source: Census 2011 via National Online Manpower Information System (NOMIS)



Index of multiple deprivation

- Source: Department for Communities & Local Government, shows a relative deprivation score



Pharmaceutical services

- Source: NHS England, data collected for 2016/17 (April 16 to February 17), Healthy Living Pharmacies data collected from KCC (2017)



General practices

- Source: Medway CCG, correct as of April 2017