

TRANSFORMATION PROGRAMME

**Medway Council Health and Adult Social Care
Overview & Scrutiny Committee (HASC)**

**Kent and Medway NHS and Social Care Partnership Trust (KMPT)
Transformation Programme Highlight Report**

June 2015

Version:	1.0	Status:	Draft	Date of report:	03.06.15
Reporting Officer:	Malcolm McFrederick	Report completed by:	Rheanna Mitchell	Reporting to:	Medway HASC

Introduction:

In March the HASC received a report from KMPT in relation to its bed usage and Transformation Programme, providing an update on the progress made towards delivery of the planned service developments and a report on the benefits realised to date.

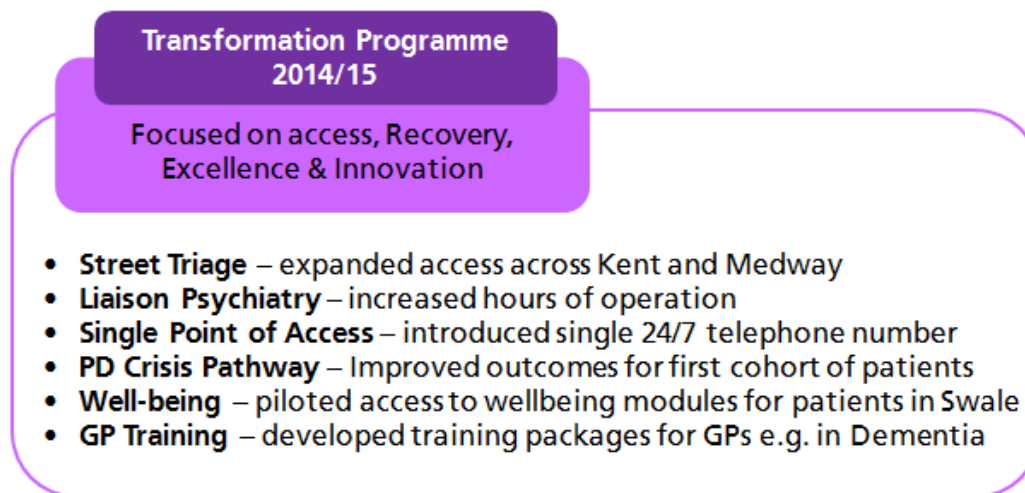
Following the HASC on 31.03.15, KMPT was asked to provide an update on the shared cost of out of area placements to KMPT and NHS Medway CCG. This is provided below:

Contribution	2014/15
Medway CCG	£656,759
KMPT	£3,152,213
All CCGs (total CCG contribution)	£3,948,593
Total Cost to the health economy	£7,100,806

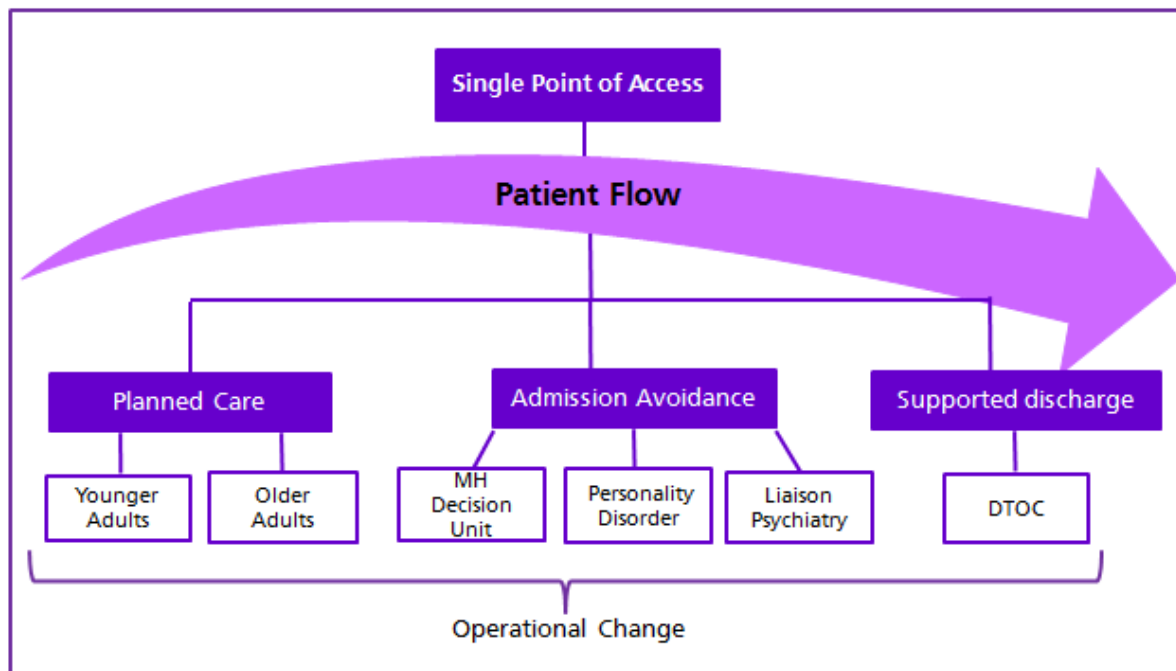
The June report provides detail on bed usage (Appendix A) and a progress update related to the Transformation Programme – highlighting key progress until June 2015.

1. Transformation Programme Progress report:

In March 2015, the HASC received a report on the achievements and deliverables in relation to the KMPT Transformation Programme undertaken in 2014/15. A high level summary of the key outcomes is summarised below:



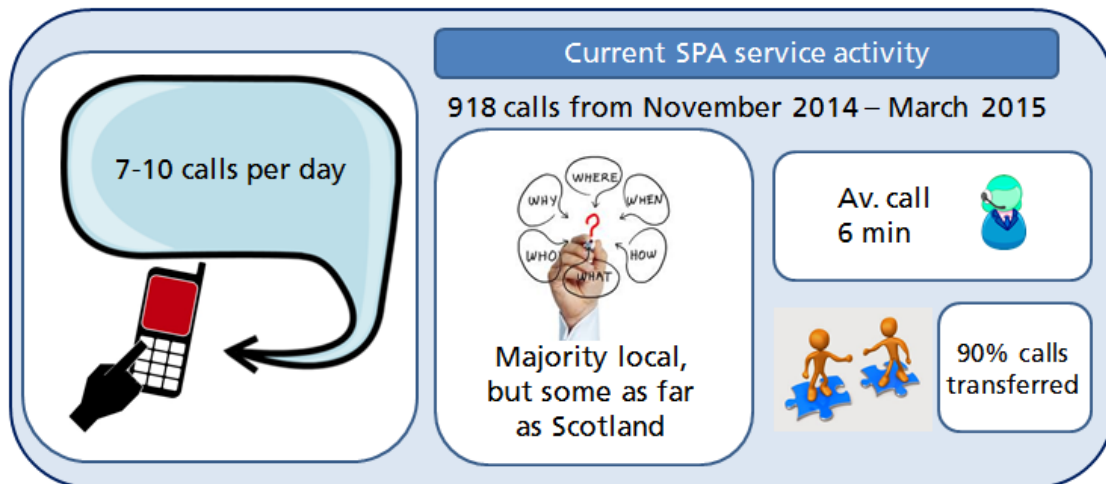
The KMPT Transformation Programme has been updated for 2015/16. Building on the principles of Access, Recovery, Excellence and Innovation, there will be four programmes within the new and refreshed Transformation Programme.



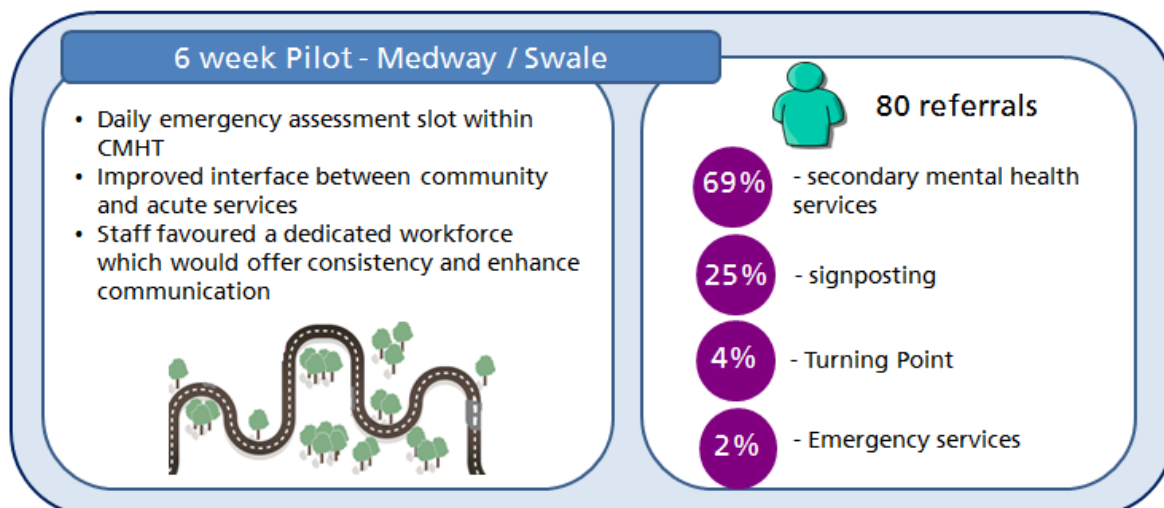
Single Point of Access:

The Single Point of Access project has a vision to ensure that the public and referrers have a single point of access into mental health services in Kent and Medway. On calling KMPT, they will speak directly to a clinician, who is ready to treat and will use their clinical judgement to inform the 'next steps' on a patient's journey.

The first stage was launched in December 2014, with the establishment of a telephone number, accessible 24/7.



The second phase of the project, to ensure the telephone number is staffed by a dedicated team of clinicians who can provide tele-triage and onward coordination of care, will be delivered in 2015/16. In Medway this will include provision of a dedicated Initial Response Team, who will provide an urgent mental health response within 1 hour of referral. A clinically led Single Point of Access Pilot took place in Medway and Swale in April and May. The results will be used to inform development of the model and business case.



Patient Flow:

The patient flow programme aims to continue to identify opportunities to reduce bed pressures; develop new and innovative models of care; and explore partnerships and collaborative working.

A Programme Board has been established to identify programme vision, component projects and leads. The Trust takes a bottom up approach to transformation, and will use data and evidence to drive clinically led discussions and to enable development of service improvement plans.

- **Planned Care**

Initiatives to include care coordination / care navigation review, ageless service provision, collaborative and holistic working opportunities (particularly in Dementia care) and expansion of recovery college approaches

- **Alternative to Admission**

Initiatives to include Mental Health Decision Unit, Liaison Psychiatry, Personality Disorder pathway, Delayed Transfers of Care and Service Line Reporting

Once the programme is further defined, detail about deliverables, milestones and benefits will be available.

Medway contract update

KMPT and Medway CCG have agreed the contract envelope for 2015/16. KMPT is awaiting the contract documentation from the North Commissioning Support Unit and aim to sign this by the end of next week (as at 03.06.15).

Key deliverables for 2015/16 include:

- KMPT are working with Medway CCG to increase the reporting and discussion over Delayed Transfer of Care and out of area placements.
- Medway CCG are funding 24/7 A&E liaison cover at Medway hospital
- Following learning from 2014/15, KMPT are in discussions with Medway CCG regarding the Personality Disorder Crisis Pathway and will work together to explore options to extend the service to 7 days per week and to cease provision of overnight accommodation via the Hostel component, which is currently only accessible 4 days per week.

Medway Bed update

KMPT bed capacity is currently 166 and the KMPT bed stock will reach 174 when the improvement works are completed in 2015.

Upnor (New Emerald ward) opened on Wednesday 3rd June. Staff have been actively involved in the final stages and the induction programme. All staff are positive about the impact the new environment will have for their patients.

Upgrade work at Littlebrook hospital is progressing well.